



The Bell

CANADIAN BROWN SWISS & BRAUNVIEH ASSOCIATION

SPRING-SUMMER 2025



CANADIAN
**Brown Swiss
& Braunvieh**
ASSOCIATION

www.browncow.ca



Table of Contents

03	Board of Directors / Welcome New Members
04	Message from Our President
05	2024 All-Canadian 4-H Contest Winners
06	2025 All-Canadian 4-H Contest / Youth Showcase
07	News from Alberta
11	News from Manitoba
12	The Story of Tailormade Farm
13	News from Ontario / Annual Picnic Announcement
14	News from Quebec
16	Registrar's Message / Advertise in The Bell
17	A note from the DairyTrace Customer Services Team
18	Gingerlane: A Producer Story
20	Lactanet: The New Lifetime Performance Index (LPI)
23	Swiss Tradition Braunvieh
24	Eloc Brown Swiss
26	XII World Brown Swiss Conference / Vos Braunvieh
27	10 Top Milk Producers
28	10 Top Fat Producers
30	10 Top Protein Producers
31	10 Top Composite BCA Producers
33	Top LPI & Prospects
34	Classification Schedule
35	Top Bulls Available in Canada

Canadian Brown Swiss and Braunvieh Association

20 Corporate Place
Brantford, ON N3T 5R4

Administrative Coordinator: Linda Markle

Office Hours: M - F 8:00 am - 5:00 pm EST

For general inquiries, registrations and transfers contact our Customer Service Representative, Isabelle Passaretti at:

Phone: 519-756-4720
OR 1-855-756-8300 ext 277
Email: BrownSwiss@holstein.ca
Fax: 519-763-3502

Web: www.browncow.ca

About the Cover:

Sigview Covid Cadence



Have a great photo you'd like featured on the cover? Send it in with a little description to BrownSwiss@holstein.ca

Canadian Brown Swiss and Braunvieh Board of Directors



Dave Rousseau,
President,
Quebec
Fermebrownheaven@gmail.com



Stefan Gubelmann,
Vice-President,
Ontario
gubelman@tcc.on.ca



Dana Vos,
Alberta
vosbraunvieh@gmail.com



Fred Mathys,
Manitoba
Fmathys@live.ca



Shirley Dortmans,
Ontario
dortholmeholsteins@gmail.com



Mikhael Daigle,
Quebec
fermedaigale@gmail.com

Feel free to contact any of your Directors if you have any comments, questions, inquiries, or feedback you'd like to provide.

Thank you Canadian Brown Swiss & Braunvieh members for your continued support to the breed. If you would like to have your farm profiled in our newsletter, or if you have any pictures we can use for publications, send them to BrownSwiss@holstein.ca

Canadian Brown Swiss and Braunvieh Welcomes New Members January-April 2025

Membership Name	Prefix	City / Town	Prov.
SMJ Braunvieh	SMJ BRAUNVIEH	Ardrossan	AB
Jans Braunvieh	JANS	Burdett	AB
Western Braunvieh	WESTERN	Burdett	AB
Crocus Braunvieh	CROCUS	Burdett	AB
Nicki Meier	NICOLA	Abbotsford	BC
Cailyn Barton	GINGERLANE	Bath	ON
Ferme Phénix	FLAMEBIRD	Saint-Charles-de-Bellechasse	QC
Mélanie Daigle	MELINA	Drummondville	QC
Ferme Courdo Senc	COURDO	Lefebvre	QC



Message From Our President

Dear Members,

Following the 2024 Annual General Meeting that was held in person in Alberta, we had to revert to a virtual format for the 2025 AGM, as no province offered to host it. I would like to take this opportunity to thank Ian Peden and Isabelle Dupré for their involvement over the past few years. Each and every member of the Board of Directors volunteers many hours of his or her time for the good of our Breed and the advancement of our Association. We will be back in Calgary for the next AGM, in the spring of 2026. We look forward to seeing you there.

It's interesting to note how popular Brown Swiss animals have been at various auctions since the beginning of the year. Whether on our side of the border or further south, Brown Swiss tend to generate better sales averages than most of the other breeds present, demonstrating a growing interest for quality animals in mixed herds.

As we continue to strive to improve our breed and the quality of our services, we welcome any comments from our Members that could be useful and constructive for the Association. In addition, Members who are interested have an opportunity to sit as external members on some of our committees, such as the By-laws Committee.

In my opinion, one of the challenges that breeders face on a daily basis is to obtain semen in a reasonable timeframe, as not only has the Schmallenberg virus greatly reduced the diversity of bulls available in America, but several new diseases in Europe are further complicating the import of doses. Over the next year, we will be looking to meet with a few insemination centres to discuss a strategy to help Canadian breeders acquire bull inventory more easily and quickly. It will be very difficult to increase the number of bulls eligible for import, as this decision is based on political issues, but we will be happy to work with our genetic partners if they are open to the idea.

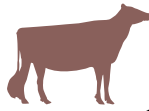
Finally, I believe that our duty as breeders is to improve the breed through genetic matings, focusing mainly on

daughters' fertility. Looking at the base change that was implemented during the recent proofs in Canada and the United States, we realize that we need to pay more attention to this particular aspect of breeding if we are to produce animals of interest to those who consider Brown Swiss to be a breed of the future. In addition, genetic improvements made by other breeds in recent years mean that we too must prioritize the production of more kilograms of fat and protein to increase productivity in our Brown Swiss and make them financially attractive.

Wishing you a beautiful summer, a good season in the fields and much success with your Brown Swiss!



– Dave Rousseau
President



Congratulations to the

2024 All-Canadian 4-H Contest Winners

2024 Brown Swiss All Canadian 4-H



Junior Calf
SCHWEIZER TREK SAMIRA – BSCANF121742076
Exhibitor: Juliette Chaput

2024 Brown Swiss All Canadian 4-H



Intermediate Calf
RED LAWN HB FAMOUS CANDY – BSCAN14790785
Exhibitor: Bennett Huesing

2024 Brown Swiss All Canadian 4-H



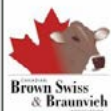
Senior Calf
BROWN HEAVEN TIMOUT FIREBOOM –
BSCANF121164675
Exhibitor: Corinne St-Pierre

2024 Brown Swiss All Canadian 4-H



Summer Yearling
NOR BELLA FALCO PIXIE – BSCANF14623986
Exhibitor: Sarah Weber

2024 Brown Swiss All Canadian 4-H



Junior Yearling
EDGE VIEW R WACO ETV – BSUSAF68227220
Exhibitor: Jaiden Stull



2025 ALL-CANADIAN 4-H CONTEST

REMINDER: When you are in the show ring this season, take a side profile photo of your calf, so at the end of the year you can enter the All-Canadian Brown Swiss 4-H competition.

PICTURES:

- It shall be the responsibility of the exhibitor to secure and supply the photos of animals being entered in the All-Canadian Contest.
- The photos must be 5 x 7 unretouched black and white or colour glossy prints.
- Pictures must be made during the current year and show the animal in the same stage of growth as when she qualified in the show ring.
- The judges will have the authority to remove pictures from the contest if picture quality standards have not been met.

CLASSES FOR THE 2025 4-H CONTEST INCLUDE:

Brown Swiss Junior Class:

1. Junior Calf – Mar 1/25 – May 31/25
2. Intermediate Calf – Dec 1/24 – Feb 28/25

Brown Swiss Senior Class:

3. Senior Calf – Sept 1/24 – Nov 30/24
4. Summer Yearling – June 1/24 – Aug 31/24
5. Junior Yearling – Mar 1/24 – May 31/24



Applications can be found at www.brownswiss.com
(Click on Information and Awards, News & Events)

Canadian Brown Swiss and Braunvieh *Youth Showcase*

The Association is excited to introduce a brand-new youth section in The Bell magazine!

Got something funny or interesting to share?

We'd love to hear from you!

Send us a photo of yourself along with a short caption for a chance to be featured in The Bell magazine.

Let us know what you've been up to!

Submissions can be sent to: ipassaretti@holstein.ca



Developing a friendship – First step to becoming a next generation Braunvieh breeder

Greetings To Everyone from Alberta

Hello Everyone,

First of all, an important message to all Youth – Isabelle from the Association Office informed me that they will designate one page of each BELL magazine for youth. Therefore, if any of you kids and youngsters have something interesting or funny to tell, please submit it to Isabelle – ipassaretti@holstein.ca. Also welcome are good pictures with an explanatory caption. So, get a head-start for a submission to the next issue of the BELL. Please note that this “Youth Page” is reserved for material other than 4-H stories and 4-H photos. Those will continue to be covered in a separate section of the Fall/Winter edition of the magazine.

What is New – Nothing much, but life continues to be great for us – we are not really retired, but it would be boring not to have anything to do. Anybody that had a busy life cannot just quit “cold turkey”. Being from Switzerland, some of the English expressions still leave me puzzled as to who invented them – like the expression to quit “cold turkey”... how did that one come about? Anyway, the winter was a chance for us to do some more work around the house and that was enjoyable – most of the time, that is! It was not a rush and we took breaks when we felt like it and did a lot of reading, connecting with friends and all those good things. I also dove into re-organizing everything and getting rid of the “unwanted” or “no-longer-needed”. I just love that job – no kidding. I spent hours and hours completely happy with recycling, re-purposing, giving-away good stuff and throwing out or burning useless stuff – wow, it’s a truly great job, try it.

Right now, we enjoy all the texts, phone calls and photos that our partners are sending to keep us up-to-date on all the new arrivals. They are doing a great job calving the cows and we go whenever to see them all and I have fun brushing the cows and playing with the calves together with Michaela. Nice for us, to still be able to be involved.

Farmfair International 2024 – We were again exhibiting at Farmfair last November together with Michaela and family, and the help of Sarah Junck and daughter Shaely. We had limited the entries to only six head. Initially, we planned for even less, but women have the right to change their minds and it proved to be a good decision. We selected so that we could enter almost every class and we had good luck with them. Swiss Tradition Marquis, Lea and Model Girl ended up Grand Champion Bull, Grand Champion Female and Reserve Grand Champion Female respectively. These three could, together with our heifer calf Maya, be used in the “Get-of-Sire”, “Progeny of Dam” and “Breeder’s Herd” classes, which earned us first places, Premier Breeder and Exhibitor. It really was a lucky year to have had the right animals, from the right sires, with the right birth days and similar weights all in one small group. Not likely to happen often... or ever again!

Out with the Old and in with the New – I have done the financial and secretarial duties for the Alberta Braunvieh Association since 2011, and have wished to retire from it for some time. Therefore, at our February 23rd meeting, Alana Schamber got voted in and I am happy to know that my efforts will be continued through Alana. She is a truly enthusiastic advocate for the Braunvieh breed. Alana and family are always quick to step in and help with anything, such as pitching in at Farmfair and lending a hand to all that need one.

I would like to take this opportunity to extend my sincere thanks for trusting me all those years to take care of the Alberta Braunvieh Association’s business.

- Verena Peden

2025 Alberta Braunvieh Association Executive Report

On February 23, 2025, the Alberta Braunvieh Association met for the Annual General Meeting at Leduc, Alberta. There were 25 people in attendance, and it was a great time to share food, friendship, and gather together. The enthusiasm for Braunvieh is growing and looks great for the future. The picture was an afterthought, taken after the meeting and we are sorry if there are some people missed.

Ian and Verena Peden’s promotion and dedication to the Braunvieh Breed for 40 plus years have helped the Braunvieh breed get to where it is today. We thank them for their continued support; their efforts have shaped Braunvieh cattle in Alberta and Canada. As they step into retirement, we know they will remain busy and the grass will not be growing underneath their feet!

Our new executive was elected and are as follows: Riley Jans as President, Dana Vos as Vice-President, and Alana Schamber as the Treasurer/Secretary.

Riley bought his first Braunvieh heifer from Swiss Tradition in 2022. He now has a small herd and has recently formed his herd name: Jans Braunvieh. He is now a member of the Canadian Brown Swiss and Braunvieh Association. Riley has shown cattle at Farmfair International for the past three years.

Dana bought her first Braunvieh steer in 1984 for 4-H then bought her first Braunvieh heifer in 1986. This was the start of many years showing Braunvieh, until the early 2000s. In 2020, the passion to raise Braunvieh cattle renewed with her children and once again she is raising Original Braunvieh Cattle.



Greetings To Everyone from Alberta

Together with her husband, Bryce, and their five children, the Vos Braunvieh herd continues to grow.

Alana Schamber first became involved with Original Braunvieh cattle in 2017, after their family purchased their first Braunvieh cattle from Ian and Verena Peden. Since then, the herd at Tin Forest Farm has grown, along with their appreciation for the breed.

The new Alberta Braunvieh Association executive looks forward to working with Braunvieh cattle breeders. It is a great time to be raising cattle and especially Braunvieh cattle! At the meeting, a Youth Committee was formed, as we hope to encourage more youth to become involved. As an executive, we welcome new members and new ideas.

This year, Farmfair International will be held on November 5-8, 2025 in Edmonton, Alberta. We encourage all Purebred Braunvieh breeders to submit cattle entries and be a part of the show.

More From Alberta

While looking through minutes and notes collected over the years, I once again realized that time does indeed fly. The following is a quick summary of the things that happened during my service as the Alberta Director to the Board of the Canadian Brown Swiss and Braunvieh Association:

I started in the position to represent Alberta in June of 2012, after Ted Kostenuke (then the Director to the Board) nominated me to take over for him. I wasn't exactly into this kind of thing, but relented, since no one else was going to step up to the plate.

I attended my first AGM in 2013 in Rivière-du-Loup, Quebec. In 2014, I went to Kincardine, ON. Back to Quebec (Trois-Rivières) in 2015 and to Guelph in 2016. In 2017, I flew to Quebec City – a trip to remember, due to a grand snowstorm, causing tiresome delays. 2018 and 2019, the AGM was held in Lyndsay, Ontario and Alma, Quebec.

On these trips, I met various member breeders from Quebec and Ontario and enjoyed visiting with everyone at the banquets and farm tours. Everything was always well organized and I convinced Verena to join me for the 2020 AGM, thinking it may well be my last one, since I was hoping to find a successor for my position one of these days. We arranged to have things looked after at the farm and booked flights to Ontario early. Then the unexpected! It was a great disappointment when COVID forced the cancellation of our trip. Virtual AGM's became the "new normal".

This, however, changed in 2024, when the AGM was scheduled for Calgary, Alberta, thanks to the enormous efforts made by Dana Vos, who organized the whole meeting, silent auction and banquet with little input of anyone else.



February 23, 2025: Alberta Braunvieh Association - AGM

– Riley Jans, Dana Vos and Alana Schamber
Alberta Braunvieh Association Executive

This year, it was back to "virtual" for my last meeting as a Director. I have resigned as the Alberta representative and Dana Vos was nominated and elected. For next year, she again is organizing an AGM "in person", no task is too big for her to commit to. Dana has already reserved Friday, February 20, 2026 for the AGM at the Clique Hotel in Calgary, Alberta. Therefore, I encourage everyone to save that date and come to meet us Albertans face to face.

Now, I would like to say thank you to all the Board members and staff, with whom I worked over the years, for the opportunities given to me to represent the Braunvieh breeders' interests and goals. Dana Vos will be an excellent replacement for me. She is very knowledgeable about Braunvieh and is tireless in doing the best for the breed.



Respectfully,

– Ian Peden

Greetings To Everyone from Alberta

Farmfair International 2024



After the show, everyone settled in for a nap. Including the cows and the kiddos!



Class 47: Progeny of Dam. L-R Harlie with VOS LOVE, Jordan with VOS MARLO (placed 2nd), Eloise Laroque with SWISS TRADITION LEA, and Verena Peden with SWISS TRADITION MAYA.



Class 46: Breeder's Herd. L-R Riley Jans with VOS MEGAN, Harlie Jans with VOS MONEY, Bonnie Jans with VOS MOOSE, and Jordan Vos with VOS MARLO. Vos Braunvieh placed 2nd.



Bull Calf. Riley Jans showing VOS MOOSE DKV 4M (placing 3rd), Jordan Vos showing VOS MARLO DKV 19M (placing 2nd). MARLO was also Reserve Champion in class 30.



Dieter Schamber leading the way with the youngest heifer VOS MINDY 17M in class 18. This was Dieter's first time showing and he did wonderfully!



Class 18: Heifer Calf Class



Class 18: Mature Cow. With her natural 2024 calf at side, Riley Jans showing SWISS TRADITION HONEY and Harlie Jans showing VOS MONEY (placing 2nd) in class 15 Senior Reserve Champion as well as Reserve.



Class 12: Mature Cow. With her natural 2024 calf at side, Jordan Vos showing SWISS TRADITION HARLO and Asia Nickel showing VOS MARLO DKV 19M (placing 1st). In class 15 Senior Champion, HARLO and MARLO were the Champion as well.



Greetings To Everyone from Alberta

Farmfair International 2024



Class 3: Yearling Heifer. Bobbie Jans showing VOS LAUREN DKV 16L, placing 3rd.



Class 3: Yearling Heifer. Jordan Vos showing VOS LOVE DKV 9L, placing 2nd.



SWISS TRADITION MODEL GIRL, 2024 Reserve Grand Champion Female shown by Sarah and Shaely Junck.



SWISS TRADITION LEA, 2024 Grand Champion Female with Verena Peden and Judge Hannah Whittall.



SWISS TRADITION MARQUIS, 2024 Grand Champion Bull shown by Michaela Fox.



Taylor Jans and Colt Needham making sure the playtime happens, best buds!

Brown Swiss Represent at COYF Nationals 2024

I was introduced to Brown Swiss over 15 years ago while showing cows with my boyfriend, Marcus Dueck, and his family in Morris, Manitoba. Four Oak Farms had switched from Holstein to Brown Swiss after falling in love with the breed at shows.

Fast forward to 2024, and I find myself married to Marcus with two daughters, running Four Oak Farms in Kleefeld, MB.

Text Box 2, Textbox In March of this year, Marcus and I were nominated and then a bit later selected as Manitoba's Outstanding Young Farmers (COYF) and spent the summer preparing for Nationals. Provinces take turns hosting the National Event, this year it was being held in Lethbridge, AB. In 2026 it will be in B.C and in 2027, it's Manitoba's turn!



In November, Marcus and I left our daughters and the farm in the hands of his parents and our worker and headed to the National Event.

We met our fellow nominees who had been selected in their provinces and spent the week in AB listening to each other's presentation, going on tours and dining together. During this time, we had many conversations about our Brown Swiss and our tie-stall milking robot. There was plenty of hospitality where you had the chance to meet Alumni of the program who attend this event annually. The COYF program attracts a diverse group of progressive farmers and sponsors who are all encouraging and welcoming.

Program Overview

Canada's Outstanding Young Farmers Program recognizes young farmers who exemplify excellence in their profession. Eligible nominees must be farm operators between 18 and 39 who derive a minimum of two-thirds of their income from their farm operations. Each year one farming couple is selected from each of the program's seven Regional Recognition Events to represent their respective region at the National Recognition Event.

At the National Event, the seven honourees are recognized for their achievements and judged by a distinguished panel of judges using the following criteria:

- Progress made during their farming career
- Maximum use of soil, water and energy conservation practices
- Crop and livestock production history
- Financial and management practices
- Contributions to the well-being of the community, province and nation

I encourage you to take a moment to read the program's overview and visit their website at <https://www.oyfcanada.com/language/en/about-coyf/> to nominate a farmer. It is an exciting journey and gives young farmers the chance to take a closer look at how and why they choose to farm.



Each year, two of the seven honourees are chosen by the judges as Canada's Outstanding Young Farmers.

The vitality of the Program is maintained through the continued participation of alumni, who return each year to the National Recognition Event to honour and welcome new members. The OYF program is sponsored nationally by Agriculture and Agri-Food Canada, Bayer, CIBC, CN, John Deere Canada ULC and Sollio Agriculture.



I wish you all a happy farming career, though it is challenging, it is also rewarding.

– Paige Dueck
Four Oak Farms, Canada's Outstanding Young Farmer Manitoba 2024



The Story of Tailormade Farm



The Tailormade Farm started with Brown Swiss in 2017 with three aging but enthusiastic partners. We all love to work with Brown Swiss animals. We are located 10 minutes south of Brandon, Manitoba.

The farm has Holsteins, Jerseys, and around 35 Brown Swiss (15 cows and 20 young cattle). All the animals at the farm are oriented for show.

The majority of Brown Swiss have the potential to be successful as show cattle. Seven of eight mature cows are EX, first and second calves are Classified between GP84 and VG88.

ETV EMBRYOS FOR SALE FROM WINDY X FAMOUSE – RAMPAGE – DOBOY

BLESSING GARBRO B WINDY ET EX92



- Pictured at 2 years old, Windy is a member of the W family.
- Reserve All-American 2-year-old.
- 6th generation All-American Honoree.

EX92 EX91 EX92 EX93 EX94

2.0	9508KG	4.0%	3.6%
4.4	11095KG	3.8%	3.4%
6.9	11166KG	3.7%	3.7%

BROWN HEAVEN BIGSTAR FLORENCE EX91



- Pictured in 2018.
- 1st 5-year-old Minnesota Fair 2023.
- 3rd group of 3 Brown Heaven Herd.
- All-American Honorable mention.
- All-Canadian Junior Calf 2018.
- Honorable Mention Minnesota State Fair.

EX91 EX91 EX92 EX91 VG89

2.3	9175KG	3.9%	3.8%
3.6	9589KG	4.3%	3.8%

BLESSING WIN V OSBORN NICE ETV EX91



- Pictured in 2018.
- All-Canadian Intermediate Yearling.
- Honorable All-American Intermediate Yearling Heifer Madison 2018.

EX91 EX91 EX92 EX91 VG89

2.3	9136KG	4.2%	3.4%
3.5	10157KG	3.7%	3.3%
4.7	10493KG	4.4%	3.4%
5.6	10130KG	3.4%	3.6%
6.7	11789KG	3.8%	3.4%

R HART ALL-STAR 249 RITZY VG86 2Y



- Ritzy is one of the best young cows in the barn.
- 1st Place Winter Yearling Minnesota State.
- 3rd Place Winter Yearling Madison.
- Honorable Mention All-American 2022.
- 6th generation All-American Honoree.

2.3 8123KG 4.7% 3.7%

LAURIE & DONNA HARP
Box 127
RR1, BRANDON MB R7A 5Y1
Phone: (204) 728-8448

FRED MATHYS
Box 155
WAWANESA, MB R0K 2G0
Phone: (204) 730-5990
Email: fmathys54@hotmail.com

News from Ontario

Spring is underway here in Ontario, though it has been quite cool and wet. This is good news for our farmers because we need the moisture.

This summer we have a few events to look forward to. Our first event will be our Annual Picnic at the home of Stefan and Rita Gubelmann. We are looking forward to seeing their new barn renovations and spending time with fellow Brown Swiss Breeders in the nice weather. The date of the picnic this year is Saturday, July 5 so if anyone is in Ontario at the time please keep this event in mind.

Each summer, we have two Brown Swiss Shows. Our 4-H members do an excellent job of training their calves and making these events a tremendous success. The first one is at Hanover Fair on Saturday, August 9. Registrations for this fair will be done on AssistExpo.

Our second major show is held at the Kincardine Fair, and will be on Saturday, August 30. We look forward to seeing the hard work the 4-H members have done with their calves all summer.

This is our Ontario Board of Directors, so feel free to contact them if you want to see what is happening with the Brown Swiss Breed in Ontario.

Happy Spring!

– Tracy Reid

Chairman: Joel Voth

(226) 868-2528

vothvvalleyfarms@gmail.com

Vice Chairman: Bill Los

cattlemaster@hotmail.com

Simon Signer

(519) 588-0670

simonsigner@hotmail.com

Stefan Gubelmann

gubelman@tcc.on.ca

Troy McConnell

troymcc@hotmail.com

Secretary/Treasurer:

Tracy Reid

(519) 377-2812

tracyreid22@hotmail.com

ATTENTION BROWN SWISS BREEDERS

The 2025 Annual Summer Picnic is just around the corner!

Stefan & Rita, Katrina, Courtney, Simon, and Ernst & Yolanda Gubelmann will be hosting this year's Ontario Summer Picnic at
82301 North Line WALTON, ON.

Date: Saturday July 5, 2025

Start Time: 11:00 am

**We look forward to
seeing you there!**





News from Quebec



Greetings to all Brown Swiss Enthusiasts!

Seasonal work is already well underway. I hope the last winter wasn't too harsh and that you were able to make the most of it. At our last AGM, Mr. Étienne Boivin-Côté stepped down. Étienne, a big thank you for your involvement over the last few years, and we look forward to seeing you at future events. Mr. Sem Lehmann has returned to the Board. Welcome!

Last April, the Multi-Breed Mentorship Sale was held, with three Brown Swiss animals featured. Despite a number of improvements to the running of the sale for this second iteration, it is clear that we'll have to roll up our sleeves again next year. It's a great showcase for the breed, so we must take advantage of it. I would also like to invite you to take part in the Dairy Supreme on August 20 and 21, and register your best animals, as it is an excellent opportunity to showcase our wonderful breed.

This year, your submissions will be needed for the return of our calendar, in collaboration with BS Canada. Buying a page or half-page is a great way to get the word out about your business, so grab your cameras and take a picture of your lovely Brown Swiss. To reserve your page, simply contact a member of the Board of Directors. We'll publish more details on how to proceed in the coming weeks.

This fall, we will be holding the Brown Swiss Cup, a popular competition for breeders and an opportunity for us to visit many breed enthusiasts across Quebec. At the time of writing, the Judge had not yet been confirmed, but should be announced shortly.

A few projects still in the early stages are taking shape with other Breed Associations. We'll keep you posted as they materialize – some exciting things are on the horizon...

As the date and venue for the next Brown Swiss Picnic have already been set, I'd like to take this opportunity to invite you to this great gathering, even though it's just over a year away. The Picnic will take place in the Lower St. Lawrence region on August 1, 2026, and Ferme Charluson inc. of Saint-Cyprien will be our host.

In closing, I would like to thank Quebec Brown Swiss' Board of Directors once again for their important and vital volunteer work.

I wish you all a great summer season. Take good care of yourselves!

– Dave Labrie
President, Quebec Brown Swiss Club

Votre conseil d'administration

Région no : 1 – Bas-Saint-Laurent

Dave Labrie, président
126, chemin Taché Est
Saint-Cyprien (Québec) G0L 2P0
Tél. : 418 868-5134
charluson@outlook.com

Région no : 2 – Chaudière-Appalaches

Cynthia Fillion, administratrice
218, rang St-Luc
Saint-Bernard (Québec) G0S 2G0
Tél. : 418 475-5302
cynthia.fillion1@hotmail.com

Région no : 3 – Centre-du-Québec

Mikhaël Daigle, administrateur
343, rang 3
Saint-Ferdinand (Québec) G0N 1N0
Tél. : 819 621-7718
d_daigle@sympatico.ca

Région no : 4 – Estrie

Sylvain Boulanger, administrateur
223, rang 1
Lambton (Québec) G0M 1H0
Tél. : 418 486-2925
sylvain.boulanger@cshc.qc.ca

Région no : 5 – Montérégie

Josée Charron, 1re vice-présidente
490, rang des Terres-Noires
Verchères (Québec) J0L 2R0
Tél. : 438 884-0854
fermebrownheaven@gmail.com

Région no : 6 – Rive-Nord, Outaouais, Abitibi, Témiscamingue

Isabelle Dupré, administratrice
423, rang 8
Saint-Germain-de-Grantham (Québec) J0C 1K0
Tél. : 819 471-0733
isadupre@hotmail.com

Région no : 7 – Saguenay, Lac-Saint-Jean, Québec

Étienne Boivin-Côté, 2e vice-président
10, chemin Deguen
Saint-Gédéon (Québec) G0W 2P0
Tél. : 418 345-2407
etienne.boivin.cote@live.fr

Poste relève

Ariane Maltais, administratrice
773, rue des Ancêtres
Lemieux (Québec) G0X 1S0
Tél. : 581 996-8442
arianemaltais@live.ca

Conseiller technique

Serge Bilodeau
9, chemin Multibois
Petite-Rivière-Saint-François (Québec) G0A 2L0
Tél. : 418 632-5522
sbilodeau@brownswissquebec.com

Administration

3955, boul. Laurier Ouest
Saint-Hyacinthe (Québec) J2S 3T8
Tél. : 450 778-9636
Téléc. : 450 778-9637
info@brownswissquebec.com

Patricia Normandin
pnormandin@brownswissquebec.com

Angèle Hébert
ahebert@brownswissquebec.com

Jenny Henchoz
jhenchoz@brownswissquebec.com

LA BROWN SWISS

Un atout

Longévité



Résistante
au stress
thermique



Meilleure
résistance à
la mammite



Tempérament
calme et
docile



Onglons noirs
diminuent le
risque de lésions
et de problèmes
locomoteurs



Son lait
fourrager un
atout



97,5 % de
vêlage facile



www.brownswissquebec
Club Brown Swiss Québec
Serge Bilodeau: 418-569-3742





Message from the Registrar

SPRING UPDATE FROM THE REGISTRAR'S OFFICE

Hello everyone,

I hope your year is off to a great start! With warmer days ahead and summer just around the corner, it's the perfect time for a quick update from the Registrar's Office.

Here's where things stand so far in 2025

January 1 – March 31:

- 7 new members have joined the Association
- 26 registrations have been completed
- 319 classifications have been completed

Falling behind on registrations?

No worries—we're here to help! Reach out to see if you qualify for our catch-up program.

Pending transfer?

Please send it directly to the Registrar by mail or email.

Make sure to include:

- A copy of the certificate of registration
(An electronically submitted transfer application or written/electronic agreement is also acceptable)
- The date of transfer
- The seller's signature or written approval

If you have any questions or need assistance, don't hesitate to contact me by email at ipassaretti@holstein.ca or by phone at 1-855-756-8300, ext. 223.

Warm regards,
Isabelle Passaretti
Registrar



Advertise in The Bell

Members of Canadian Brown Swiss and Braunvieh Association can advertise in the Newsletter at the special rates listed below. If you are interested in putting an ad in a future magazine, send us an email at BrownSwiss@holstein.ca. Size, price and specifications are noted below.

Advertisement sizes & member price per issue:

Size of Page	B&W	Colour
Full Page	\$120.00	\$140.00
1/2 Page	\$70.00	\$90.00
1/4 Page	\$50.00	\$70.00
Inside Cover (Front or Back)	\$140.00	\$160.00

*Industry Related Ads are welcomed – contact us for pricing

Note Ad Design Specifications:

CMYK at 300 ppi in PDF format to ensure high quality

A note from the DairyTrace Customer Services Team:



After more than four years of traceability data collection, DairyTrace has matured to focus on data completeness and integrity as well as value added benefits. DairyTrace has started building on the current infrastructure of its traceability database to provide metrics, ensure data integrity and accuracy as well as incorporate tools that will help connect the industry and provide benefits across the dairy value chain.

This new focus relies on many different team members, including the Customer Services team! In addition to assisting producers through calls and emails for reporting events, recent Customer Services initiatives include identifying data inconsistencies and data improvement projects, such as:

- Animal inventory clean-up projects
- Premises information verification
- Account updates and inactive account validation
- Looking into contradictions in timing of events reported (e.g. a move-in reported for an animal after the date of tag retirement) *...and more*



Three Pillars of Traceability



Premises Identification



Animal Identification



Animal Movement

All traceability events such as tagging, movement and end of life, are integral in following the life of an animal from its dairy farm of origin to end of life and identifying all other animals it may have been in contact with.



Customer Service Tips

In addition to reporting traceability events, did you know that the DairyTrace Portal offers these additional tools and functions? **Log in and explore!**

1 Order New & Reissue/Replacement Dairy Tags

2 Generate a Birthdate Certificate

3 Age Verification Animal Search

4 View & Edit Events Reported

5 Download the DairyTrace proAction® Report

6 DairyTrace Premises ID Search

In Québec? *All tag ordering and traceability reporting for dairy farmers in Québec continues to be offered through Attestra and the SimpliTRACE database.

DairyTrace.ca

Support for provinces outside of Québec:

Phone: 1-866-558-7223

Ordering Tags: tags@dairytrace.ca

Traceability: info@dairytrace.ca

Support for Québec:

Phone: 1-866- 270-4319

Email: sac@attestra.com



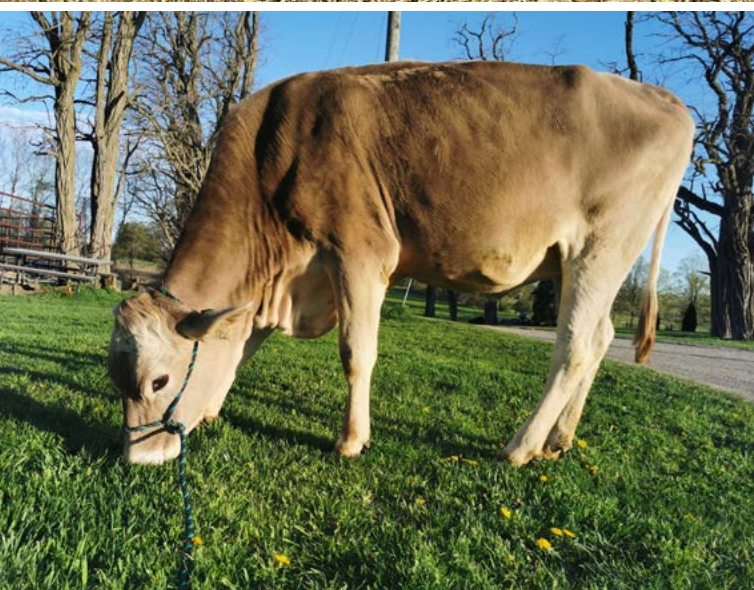
My name is Cailyn Barton and I'm the third-generation dairy farmer at our family farm. We're a 150-cow herd, milking 60 cows on one Lely A5 robot on about 500 acres on the southernmost part of Lennox and Addington County, on Lake Ontario.

I spent my life growing up and working on the farm with my parents and three older sisters. But I was never really interested in cows, genetics or showing until I joined 4-H for the first time when I turned 17. That year, I purchased my first-ever heifer at a spring sale hosted by Cherry Crest Holsteins. I bought a Red and White Holstein calf, Ingholm Addiction Jellybean, and created the prefix "Gingerlane" that year to start my own herd. From that day on, I fell in love with this industry and the cows. I started buying more heifers year after year because I loved showing and caring for them so much. But before I knew it, I was off to school.

I attended Olds College of Agriculture and Technology for two years for a diploma in Agricultural Management in Alberta. I fell in love with the West and almost didn't come back, had it not been for my beautiful cows waiting for me at home.

After four years of buying Red and Whites and having excruciatingly poor luck, I decided to switch things up. So, in the spring of 2022, after much deliberation, I looked at all the coloured breeds and decided to go in the direction of strong, docile, easily adaptable cows, and started my Brown Swiss herd.

I didn't know much about the breed or where to start but I did know one name, Gubelmann. So, a Facebook conversation later, I picked out a bred heifer, GUBELMAN HIGHLIGHT CASSIE-P, due to sexed O Malley for that June.



And boy, was that maybe the greatest purchase I have ever made! To date, she's given me three gorgeous heifer calves, scored 91 points just one day fresh in her third lactation and is currently pregnant with her fourth calf.

With that one purchase, my Swiss herd has grown to four, with three calves on the way by the end of 2025. And even better, they love the robot. Currently, CASSIE and her oldest daughter CLEMENTINE are both in lactation and average three milkings a day. They've done phenomenally in our free-stall flush barn, never a lame step, and breed back first service. I can see why this breed is getting really popular right now, there's just so much to love about them!

After a few years of milking and raising some Swiss, I knew I wanted more. So early 2025, I started looking at sales. And what a year for Brown Swiss! From College Royal Sale, to

Red Carpet and Calves for a Cause, they just kept topping the sales everywhere. It wasn't until I traveled to Nova Scotia for the National Holstein Convention that I found my next purchase at the Atlantic Spring Show. There was a tag sale happening at the show and that's when I locked eyes with the only Swiss at the entire show, LEIGHSIDE FAMOUS DANDELION, hot off her class win the day before. I fell in love with her at first sight, and she just so happened to be exactly my budget, as if it was meant to be. Now settled in back home, I can't wait to see her grow and develop here at Gingerlane Holsteins and Brown Swiss. With a foundation like this in the breed, I can't wait to see what the future holds.

– Cailyn Barton



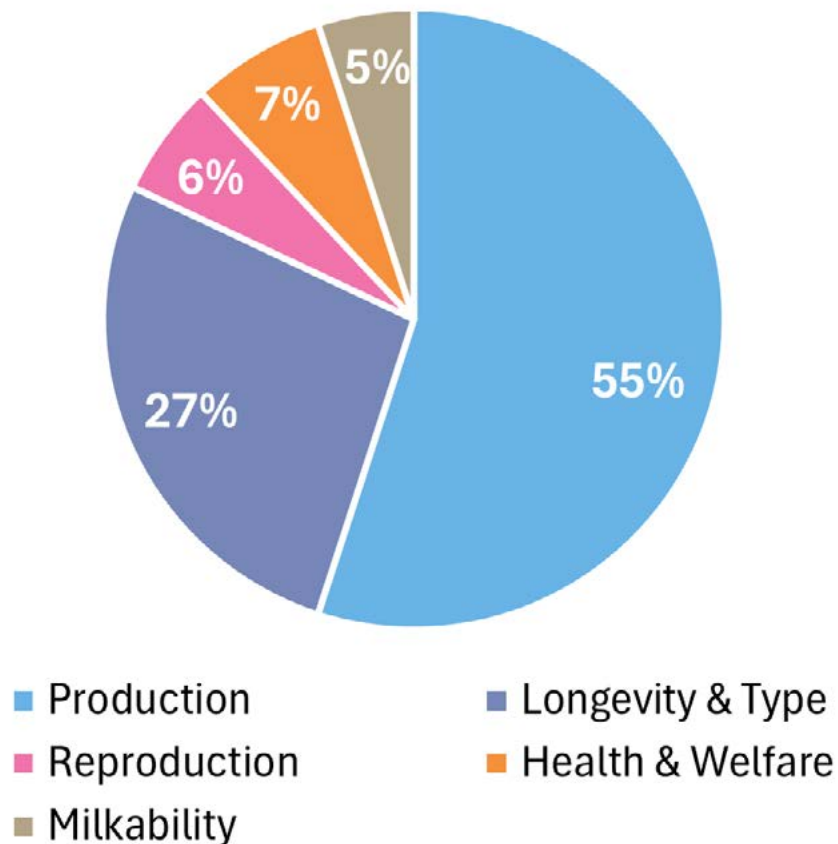
The New Lifetime Performance Index (LPI)

Since its introduction in 1991, the Lifetime Performance Index (LPI) has been a crucial tool for dairy farmers and breeders, guiding informed selection and mating decisions. Over the years, the LPI formula has evolved alongside industry breeding objectives with the inclusion of additional traits. The latest update, in April 2025, marked the launch of a modernized LPI for seven dairy breeds, including Brown Swiss. Let's delve into these recent changes so you can make the most of your breeding decisions.

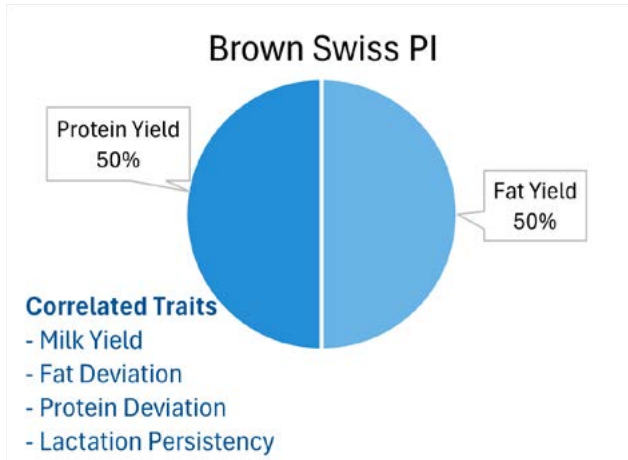
Five Subindexes for Balanced Breeding

The new formula includes five subindexes for the Brown Swiss breed, namely Production (PI), Longevity & Type (LTI), Health & Welfare (HWI), Reproduction (RI), and Milkability (MI). Each of these subindexes are published on their own and combined into LPI while maintaining the previous LPI scale, providing several options when making selection and mating decisions. Figure 1 shows the relative weights of each subindex in the LPI formula for the Brown Swiss breed. The subindexes were developed in consultation with the Canadian Brown Swiss Breed Association, industry partners, and breeders by identifying the traits to be directly included as well as traits that are favorably correlated with the subindex, even if not directly included. Each subindex is defined in more detail below along with the traits included for the Brown Swiss breed.

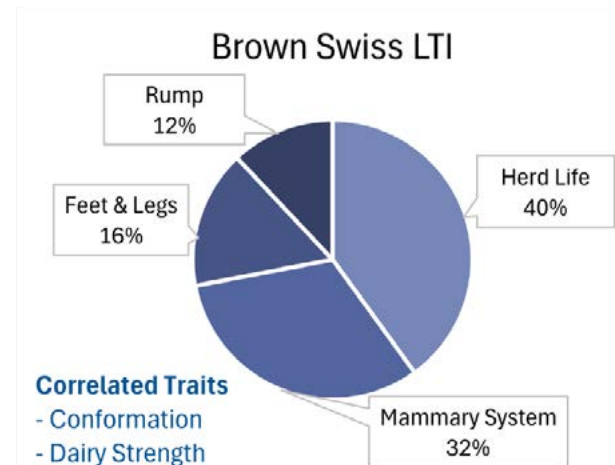
Figure 1. Relative Weights of Subindexes in the Brown Swiss Modernized Lifetime Performance Index



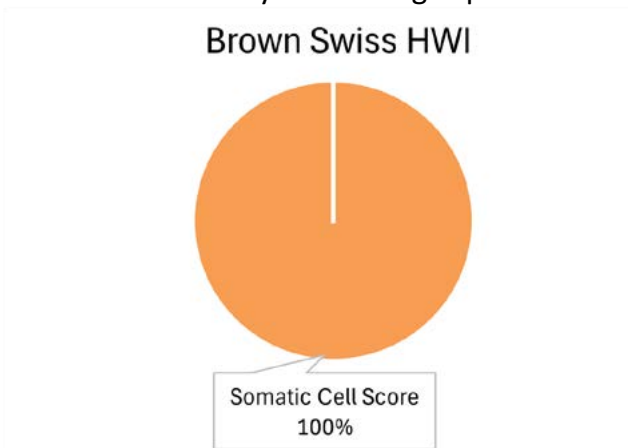
The **Production Index (PI)** is similar to the previous Production component of the LPI with the aim of maximizing fat and protein yields thereby increasing profitability. This subindex is also positively correlated with Milk Yield, Fat Deviation, Protein Deviation and Lactation Persistency.



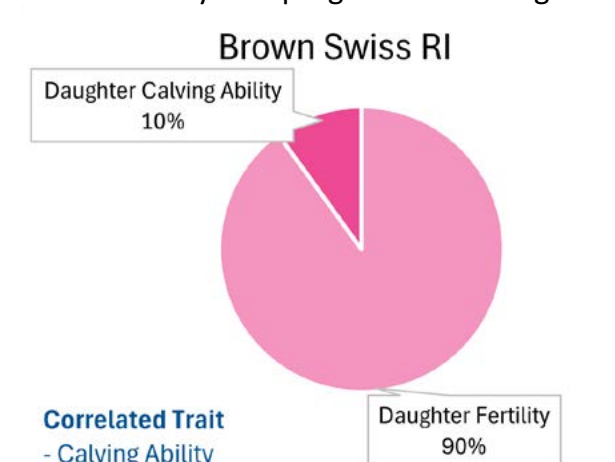
The **Longevity & Type Index (LTI)** aims to enhance herd longevity favouring functional conformation through selection for Herd Life, Mammary System, Feet & Legs and Rump.



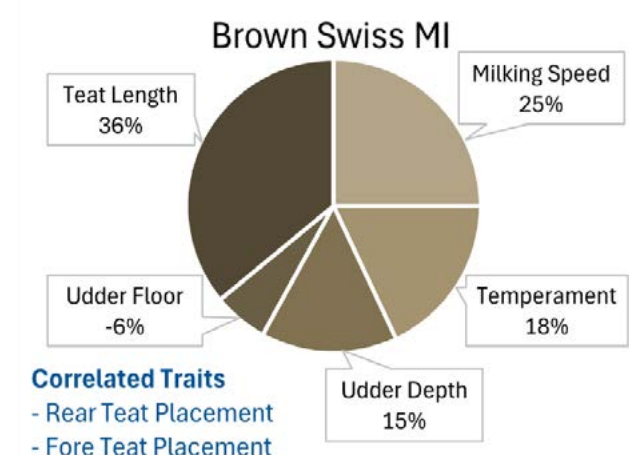
The **Health & Welfare Index (HWI)** improves disease resistance with selection for Somatic Cell Score. In combination with superior management, the HWI will lead to healthier, more disease resistant cows thereby decreasing expenses.

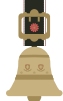


The goal of the **Reproduction Index (RI)** is to achieve genetic gain for female fertility and calving performance, which is represented by Daughter Calving Ability. Selection for this subindex also yields progress for Calving Ability.



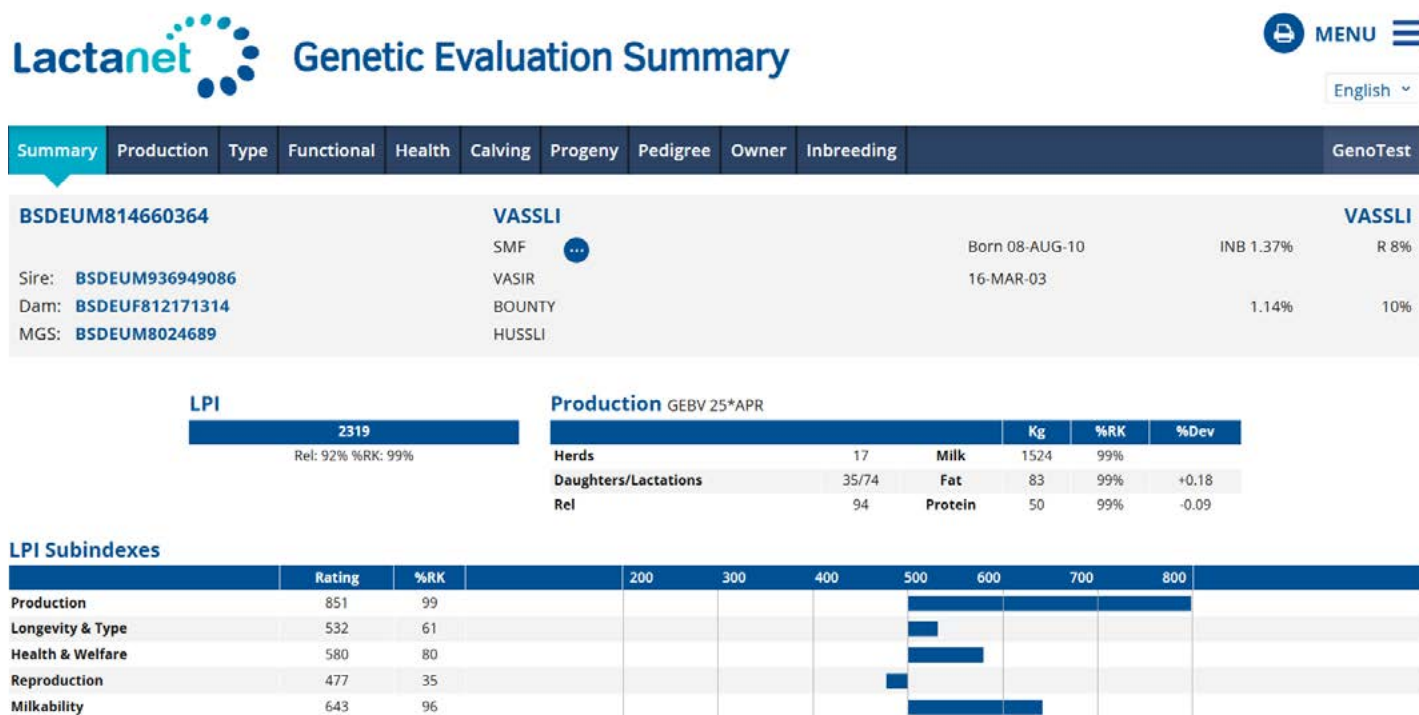
The **Milkability Index (MI)** is a new component of LPI with an aim to optimize milking efficiency designed to help all dairy farmers regardless of their production system. In addition to moderate weights on Milking Speed and Temperament, this subindex includes mammary traits related to desired udder and teat attributes.





Quickly Identify Animals that Standout for each Subindex

To help you compare subindex values and identify elite sires, each subindex is expressed on a standardized scale. The average proven sire is set to 500 with a standard deviation of 100, which means that two-thirds of proven sires will fall between 400 and 600. Favourable values will reach 700 or more. For each animal, the subindex values are published on the LactanetGen.ca website on their Genetic Evaluation Summary page along with the combined LPI value. This page includes histograms for each subindex that provide a quick reference to see the strengths and weaknesses for an animal.



Personalizing Your LPI

If you are looking for a more tailored approach geared toward your individual herd goals, you have the option to create your own personalized LPI (pLPI) by customizing the percentage relative emphasis on each subindex. In just three easy steps you can view your pLPI alongside the official LPI for each animal:

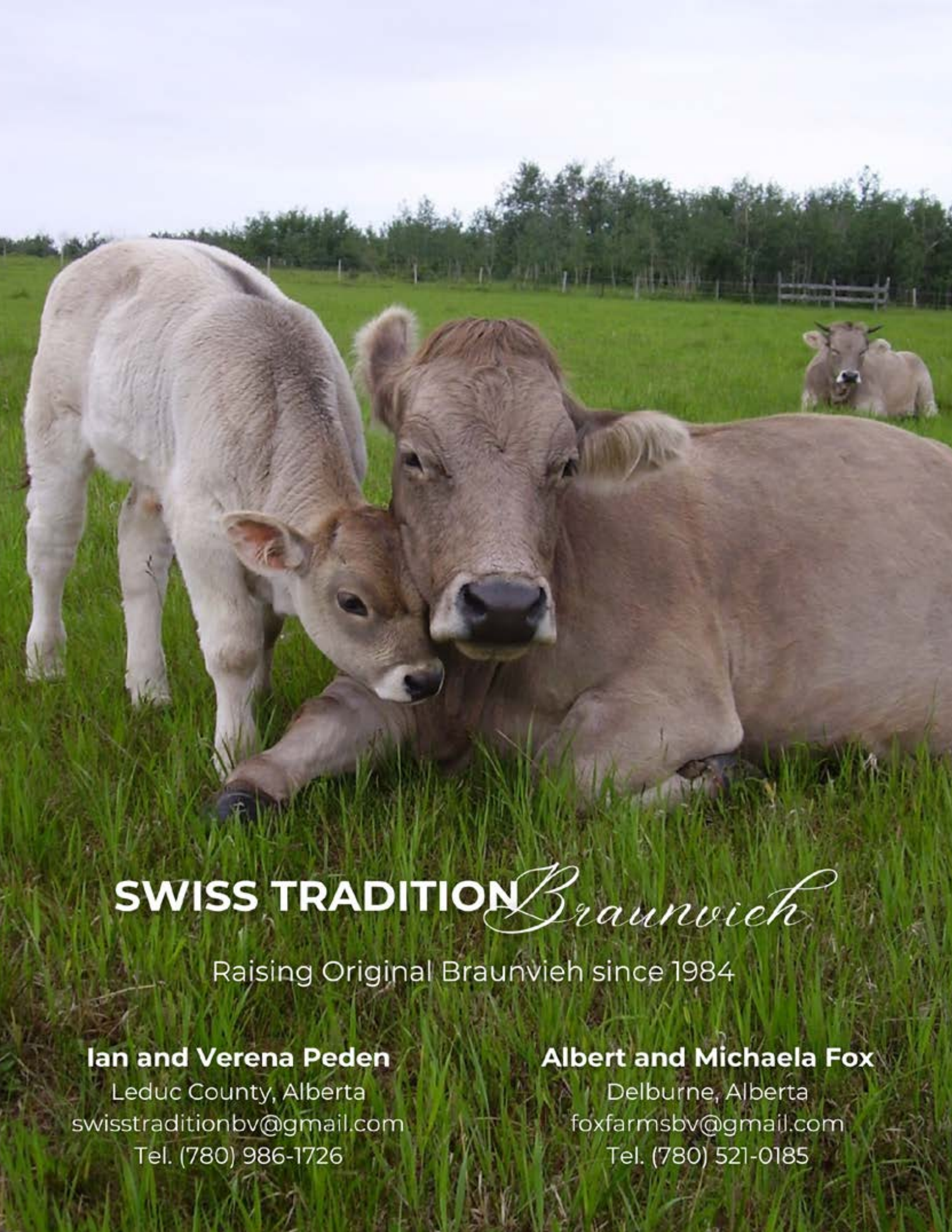
1. Create an account on LactanetGen.ca
2. In your "Preferences" page, select Brown Swiss as your preferred breed and then modify the subindex weights to create your pLPI.
3. View your pLPI via either the Animal Query or Group Query results.

Summary

The LPI has been updated to reflect a more modern approach to balanced breeding, combining important traits into five subindexes for the Brown Swiss breed. You may wish to make selection decisions based on this official LPI, individual subindexes values and the histograms, or create a pLPI to prioritize subindexes that are most important to you. With LPI, you can boost genetic progress and select for a herd that is high performing, efficient, and long lasting!

Authors

Hannah Sweett, Knowledge Transfer Specialist – Genetics Portfolio
Brian Van Doormaal, Chief Services Officer



SWISS TRADITION *Braunvieh*

Raising Original Braunvieh since 1984

Ian and Verena Peden

Leduc County, Alberta

swisstraditionbv@gmail.com

Tel. (780) 986-1726

Albert and Michaela Fox

Delburne, Alberta

foxfarmsbv@gmail.com

Tel. (780) 521-0185

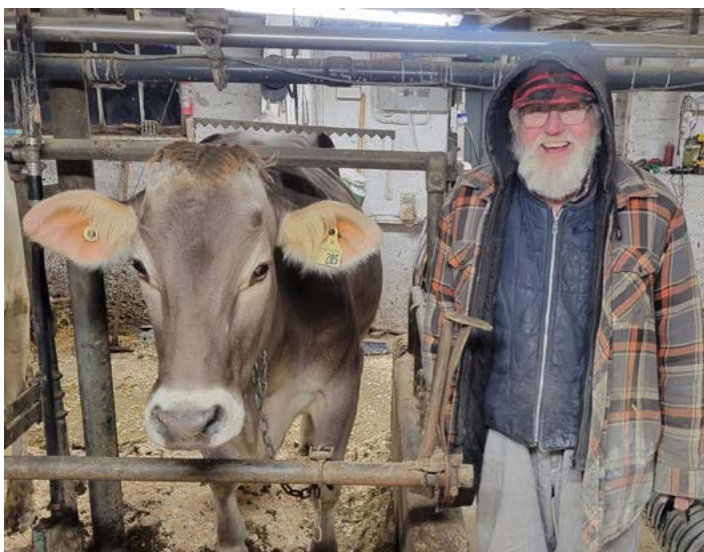


Eloc Brown Swiss



Eloc is just Cole spelled backwards. My brother and I bought the farm in Middle Musquodoboit in 1982, and worked towards improving production and type of the cows on the farm. I saw my first Brown Swiss at the Royal in 1969 while on a 4-H trip, and saw them again while I was at the Ontario Agricultural College in Guelph, from 1973 to 1975. I remember meeting Chris Bender, who took quite a bit of time talking about the breed. At that time, there were few Swiss in Nova Scotia – the largest group was probably owned by Lyndon and Doug Langille, but I was unable to buy a cow or heifer from them.

who I bought out of the Glanbrook dispersal at Brubachers. Ralph Jardine gave me a call about the calf, knowing that I was on the lookout for a good 4-H calf for my daughter, Joan. The early days of showing Swiss in 4-H were tough, some judges had never seen them and didn't really know how to place them. One judge said to me about a month after our Provincial 4-H Show – "I thought she was really good, but I didn't know." There are many more 4-H Swiss calves shown now. There have been two selected from our farm for the 4-H Classic at the Royal over the years – a great experience for the members.



Eventually, I was able to buy some Brown Swiss animals both from here and Ontario. There are only two cow families in our herd. The first are descendants of Terra Nova Tofino, which I bought from the Ontario Club sale in about 1987. I was able to get some offspring, and these morphed into being "K" names. The other family is descended from Glanbrook Pentide Roxanne

We had always shown at our local exhibition (Halifax County Exhibition), in Middle Musquodoboit. There are Holstein and coloured breed classes, so we showed the Swiss with the Jersey, Ayrshire, Guernsey, and Milking Shorthorns. We have done well over the years, with a couple of Grands, as well as Junior Champions. Carolin Turner, who was in classifying a number of years ago, came to a cow and asked, "What's this cow doing here? She needs to get out and be seen! If you want her to be seen, take her to Madison." Our son, Sandy, took Eloc Wagon Kandid to Madison with Callum McKinven. She was sold the night before the show to Ken Main and Peter Vail and was third in her class. The next year, she was Grand for Elite Dairy. The bull she was carrying when sold was Cutting Edge Kingsman at NGG. Kandid had a long show career throughout the US and was scored the first 95-point Brown Swiss. In 2019, Pierre Boulet judged the Halifax County Exhibition, and selected Eloc Biver Rennie as Grand and then Supreme Champion. She left for Quebec after the exhibition was over, and was Grand at the Supreme, for Boulet and Sicard less than a week after our local show. She was Reserve Intermediate Champion in Madison in 2020, after being second in her class in 2019. There have been other calves sold that went on to be shown in the US. We don't have time to get our own cattle out to larger shows, so we're content to sell a good one if we have one!

The Brown Swiss herd was never large, usually around ten milking

cows, but has ranged from a low of two to fourteen milking. Right now we have three ME, and six VG, including three first calvers. Current production is 10,273 kg, 4.5% fat and 3.72% protein. Over the years, my whole family has been involved in the farm and helping to milk about 55 cows in an older tie-stall barn. Initially, I worked with my brother Dave and his family. They have since established Wynt Jerseys, just up the road.

My wife, Rita, comes to the barn every morning to help finish up and steps up to milk during cropping, as well as doing the books and keeping us all organized. Sandy, his wife Emma, and their children Pippa, five, Lauchie, three, and Tilly, one and a half, have taken over the farm, and Emma has also developed a flower business - Just Bloom Flower Farm. Daughter Joan is a landscape architect, lives close by and helps with milking and cropping when needed. The youngest daughter, Allyson, lives in Creston, BC and works as a nurse. She still gets in at least one milking when she's home. All went through the 4-H program, as did Rita and I.

In 2019, Sandy and Emma bought the farm and Holsteins, and I kept ownership of the Swiss – just to have some genetic input and interest. The great thing about not being in a “breed area” is, you can do things your way – you don’t know about the fads or fashions. By the same token, you lose out on useful information, such as how to look after Brown Swiss calves. The Internet has disseminated a lot of information about the breed – some of it useful, some of it not!

We received our Master Breeder Shield in Hamilton in 2024 for Colstein Holsteins. Receiving the Master Breeder Award for Brown Swiss is an honour. Over the years, there have been a lot of breeds kept at Eloc Farm – draft ponies, Beef Shorthorns, Shropshire sheep, Jerseys, Milking Shorthorns, Holsteins, show poultry – fowl and waterfowl. I enjoyed them all, but the Brown Swiss are my favourites.

– A. Dean Cole

A family picture from the 2023 Master Breeder Gala. L to R Allyson holding Lauchie, Rita, Dean, Sandy holding Tilly, Emma holding Pippa, and Joan.





XII WORLD BROWN SWISS CONFERENCE

JULY 15 - 21 2025

BOGOTÁ - COLOMBIA

AT:



XXV
agroexpo
carferias 2025

ORGANIZED BY:



TRAVEL AGENCY:

TecnGiras
Especialistas en Giras Técnicas y Misiones para los Agronegocios

MORE INFORMATION CELLPHONE NUMBERS

SPANISH SPEAKING • +57 310 572 4542

NON SPANISH SPEAKING • +57 317 432 3744

bswc2025@asopardocolombia.co



www.asopardocolombia.co



VOS BRAUNVIEH

BRYCE JANS & DANA VOS
MAPLE CREEK, SASKATCHEWAN

Original Purebred Braunvieh Heifers and Bulls available by private treaty. Inquiries are always welcome. Stop in for a visit to see the cows and the kids!

306-409-0219

vosbraunvieh@gmail.com



10 Top Milk Producers (November 2024 – March 2025)

Yearlings			Class	Yr	Mth	Milk	Fat	%F	Prot	%P	M	F	P	Comp	Owner
1	BSCANF14224246	KOOPYCREST OLYMPIC MEADOW	VG	88	1	11	10894	469	4.3	382	3.5	334	355	335	1024 SHAWN KOOPMANS, ON
2	BSCANF14344405	KENILCREST CAN DUE MISTY	GP	83	1	10	10098	383	3.8	349	3.5	315	292	312	919 KENILCREST FARMS, ON
3	BSCANF14374766	MAPLE BOOM VIPLY 952			1	10	9620	444	4.6	343	3.6	295	334	301	930 RIMANN'S MAPLE BOOM FARM, ON
4	BSCANF14374787	MAPLE BOOM VERITAS 973			1	10	9431	434	4.6	351	3.7	308	347	328	983 RIMANN'S MAPLE BOOM FARM, ON
5	BSCANF45001110	GUBELMAN OLYMPIC DILANA	VG	85	1	10	9428	418	4.4	338	3.6	308	334	316	958 GUBELMANN BROWN SWISS LTD., ON
6	BSCANF14003368	FOUR OAK ANTONOV TURBO			1	11	9175	409	4.5	298	3.2	307	333	286	926 FOUR OAK FARMS, MB
7	BSCANF14374772	MAPLE BOOM DAIRY KING 958			1	9	9148	379	4.1	336	3.7	286	289	300	875 RIMANN'S MAPLE BOOM FARM, ON
8	BSCANF120908655	SCHWEIZER ELISIUM LAIKA	VG	85	1	10	9097	408	4.5	341	3.8	293	324	313	930 LA FERME HANS ENR., QC
9	BSCANF120908665	SCHWEIZER ZAPATA EVANY	GP	82	1	10	8831	414	4.7	328	3.7	293	337	312	942 LA FERME HANS ENR., QC
10	BSCANF14374788	MAPLE BOOM VERITAS 974			1	9	8742	379	4.3	326	3.7	300	320	322	942 RIMANN'S MAPLE BOOM FARM, ON
Jr. 2 Yr Old			Class	Yr	Mth	Milk	Fat	%F	Prot	%P	M	F	P	Comp	Owner
1	BSCANF14220875	NOR BELLA TU SG EMMA	VG	87	2	2	10382	431	4.2	341	3.3	300	306	282	888 NOR BELLA ACRES INC., ON
2	BSCANF13690527	EXCELSIOR KASPER MUDSILL	GP	80	2	0	10193	422	4.1	341	3.4	317	322	304	943 EXCELSIOR FARMS INC, ON
3	BSCANF14220878	NOR BELLA PETE ROSE ROSALIE	VG	86	2	3	9857	421	4.3	313	3.2	281	296	254	831 NOR BELLA ACRES INC., ON
4	BSCANF14245339	SACHOLM ELISIUM DAMON	GP	82	2	2	9834	441	4.5	331	3.4	288	320	278	886 SACHOLM BROWN SWISS, ON
5	BSCANF14220885	NOR BELLA EASTON LORETTA LYNN	VG	86	2	0	9796	387	4	320	3.3	304	295	283	882 NOR BELLA ACRES INC., ON
6	BSCANF110227203	LIMA SECRET OF KORINE	GP	80	2	5	9779	411	4.2	375	3.8	271	282	298	851 FERME LIMA, QC
7	BSCANF120711039	MÉLICSKA JOHANN DROLY	VG	85	2	0	9705	435	4.5	317	3.3	289	318	269	876 FERME MELICSKA 1997 INC., QC
8	BSCANF120447895	WACOMA JONMAR MARTHA	G	79	2	0	9631	401	4.2	339	3.5	294	302	297	893 R. PARE ET FILS INC, QC
9	BSCANF13594863	SPRING ROSE SEASIDEBLOOM JOVIE	GP	80	2	2	9462	385	4.1	296	3.1	276	275	247	798 SPRINGROSE FARMS LTD, ON
10	BSCANF120867433	PLEIN SOLEIL TREK TASHA	GP	82	2	0	9408	321	3.4	301	3.2	313	262	287	862 FERME PLEIN SOLEIL (2010) INC, QC
Sr. 2 Yr Old			Class	Yr	Mth	Milk	Fat	%F	Prot	%P	M	F	P	Comp	Owner
1	BSCANF13928438	MAPLE BOOM VATICAN			2	10	13189	598	4.5	483	3.7	374	418	394	1186 RIMANN'S MAPLE BOOM FARM, ON
2	BSCANF120664178	SCHWEIZER HUGE TWISTER	GP	83	2	11	11665	432	3.7	404	3.5	311	286	308	905 LA FERME HANS ENR., QC
3	BSCANF120729369	BELFLAU ELMSTAR BENITA	VG	85	2	11	11660	518	4.4	418	3.6	326	357	336	1019 FERME BELFAU INC., QC
4	BSCANF14066532	KENILCREST BANKIT ELVIRA	VG	85	2	10	11311	478	4.2	415	3.7	301	317	314	932 KENILCREST FARMS, ON
5	BSCANF120581848	MONTEN BABE CADENCE	VG	85	2	11	11107	388	3.5	365	3.3	292	254	274	820 FERME MONTEN 9088-9593 QUEBEC INC, QC
6	BSCANF14066534	KENILCREST DYNAMITE LIZ	GP	82	2	10	10452	459	4.4	387	3.7	278	304	293	875 KENILCREST FARMS, ON
7	BSCANF111575496	BROWN HEAVEN HUGE SALLY DALLY	VG	88	2	10	10391	435	4.2	368	3.5	280	292	283	855 FERME BROWN HEAVEN, QC
8	BSCANF120405826	GRANMONT HIGHLIGHT SALLY			2	10	10311	424	4.1	368	3.6	274	281	279	834 FERME DOMAINE DE LA RIVIÈRE INC, QC
9	BSCANF14066539	KENILCREST BANK IT JOEY	GP	83	2	9	10213	471	4.6	375	3.7	278	318	293	889 KENILCREST FARMS, ON
10	BSCANF13928440	MAPLE BOOM FIJI			2	10	10191	449	4.4	389	3.8	281	305	306	892 RIMANN'S MAPLE BOOM FARM, ON
Jr. 3 Yr Old			Class	Yr	Mth	Milk	Fat	%F	Prot	%P	M	F	P	Comp	Owner
1	BSCANF13928419	MAPLE BOOM HOHOHO			3	1	12334	547	4.4	441	3.6	322	355	329	1006 RIMANN'S MAPLE BOOM FARM, ON
2	BSCANF13733690	KENILCREST APEX BRITNEY	VG	87	3	2	11571	528	4.6	434	3.8	305	343	326	974 KENILCREST FARMS, ON
3	BSCANF45001030	GUBELMAN SILVER DORIS	VG	87	3	3	11394	546	4.8	432	3.8	287	339	311	937 GUBELMANN BROWN SWISS LTD., ON
4	BSCANF13784440	NOR BELLA FALK SKY	VG	85	3	3	11213	508	4.5	390	3.5	285	319	283	887 NOR BELLA ACRES INC., ON
5	BSCANF120325120	SCHWEIZER AMIR BAMBI	VG	87	3	2	11202	500	4.5	402	3.6	284	314	291	889 FERME MELICSKA 1997 INC., QC
6	BSCANF45001049	GUBELMAN OLYMPIC DIANA	VG	85	3	2	11152	451	4	399	3.6	295	297	302	894 GUBELMANN BROWN SWISS LTD., ON
7	BSCANF120648153	HIRODELLE APEX TRUDY-ET	VG	85	3	1	10864	424	3.9	368	3.4	285	277	277	839 VERONIQUE DEMERS, QC
8	BSCANF45001034	GUBELMAN KADE DUBLIN	GP	82	3	4	10696	409	3.8	374	3.5	272	260	273	805 PHILIP BAUMAN, ON
9	BSCANF111921510	MÉLICSKA BISTO CANELLE	VG	86	3	5	10613	461	4.3	388	3.7	268	292	281	841 FERME MELICSKA 1997 INC., QC
10	BSCANF120398515	PLEIN SOLEIL BSILVER ROXYE	VG	85	3	1	10546	427	4	362	3.4	286	286	283	855 FERME PLEIN SOLEIL (2010) INC, QC
Sr. 3 Yr Old			Class	Yr	Mth	Milk	Fat	%F	Prot	%P	M	F	P	Comp	Owner
1	BSCANF12635826	NOR BELLA SALOMON POSEY	VG	86	3	11	13910	553	4	459	3.3	338	335	319	992 NOR BELLA ACRES INC., ON
2	BSCANF12651489	EXCELSIOR STANDOUT MEDICINE	VG	88	3	11	13236	471	3.6	422	3.2	314	280	285	879 EXCELSIOR FARMS INC, ON
3	BSCANF45000997	GUBELMAN KINGSLEY DARBY	VG	88	3	10	12821	543	4.2	443	3.5	311	329	308	948 GUBELMANN BROWN SWISS LTD., ON
4	BSCANF13721111	MAPLE BOOM HOLLY			3	11	12461	522	4.2	434	3.5	313	327	313	953 RIMANN'S MAPLE BOOM FARM, ON
5	BSCANF13673347	FOUR OAK HUGE THUMPER	VG	87	3	6	12269	526	4.3	405	3.3	331	359	314	1004 FOUR OAK FARMS, MB
6	BSCANF13830979	LONE PRAIRIE FACT LEMONADE 2	GP	82	3	7	11546	414	3.6	387	3.4	284	256	273	813 RICHARD & ASHLEY VANDER KOOL, BC
7	BSCANF45001028	GUBELMAN DEFENDER LUCKY	EX	90	3	9	11357	437	3.9	402	3.5	289	275	291	855 GUBELMANN BROWN SWISS LTD., ON
8	BSCANF45001001	GUBELMAN ANTONOV DORIE	VG	85	3	9	10860	507	4.7	396	3.6	265	309	277	851 GUBELMANN BROWN SWISS LTD., ON
9	BSCANF13733677	KEVIOTT ACRES HAWK VALERIE	GP	82	3	9	10855	470	4.3	404	3.7	263	287	281	831 KENILCREST FARMS, ON
10	BSCANF13649041	JUST DUCKY TOBY BRAMBLE-ET	VG	86	3	8	10756	434	4	358	3.3	260	263	247	770 CHRISTIE FARMS LTD., NB
4 Yr Old			Class	Yr	Mth	Milk	Fat	%F	Prot	%P	M	F	P	Comp	Owner
1	BSCANF13027699	FOUR OAK FACT UME	VG	86	4	8	14777	714	4.8	499	3.4	335	408	322	1065 FOUR OAK FARMS, MB
2	BSCANF13027710	FOUR OAK FACT TIGGER	VG	86	4	2	14750	620	4.2	501	3.4	348	367	339	1054 FOUR OAK FARMS, MB
3	BSCANF13569938	MAPLE BOOM PUCKLO			4	2	13610	467	3.4	462	3.4	325	280	314	919 RIMANN'S MAPLE BOOM FARM, ON
4	BSCANF120133110	SCHWEIZER SEASIDEBLOOM BLUE	VG	86	4	4	13325	545	4.1	458	3.4	311	321	305	937 LA FERME HANS ENR., QC
5	BSCANF13526951	KEVIOTT ACRES APEX JENNY	GP	82	4	2	12918	503	3.9	455	3.5	306	298	307	911 KENILCREST FARMS, ON
6	BSCANF111575450	BROWN HEAVEN F & F SEA DALLY	EX	93	4	4	12620	624	4.9	449	3.6	315	388	321	1024 FERME BROWN HEAVEN, QC
7	BSCANF13235866	MAPLE BOOM PUCKRAT			4	11	12449	541	4.3	462	3.7	298	324	316	938 RIMANN'S MAPLE BOOM FARM, ON
8	BSCANF13012494	KEVIOTT ACRES CAR FUMBLE	GP	80	4	10	12257	531	4.3	440	3.6	282	303	289	874 KENILCREST FARMS, ON
9	BSCANF12635829	NOR BELLA ELLIOT ELAINA	VG	85	4	4	12239	469	3.8	386	3.1	297	283	268	848 NOR BELLA ACRES INC., ON
10	BSCANF111575465	BROWN HEAVEN SALOMON TIDBIT	EX	92	4	9	12232	528	4.3	449	3.7	292	314	305	911 FERME BROWN HEAVEN, QC



10 Top Milk Producers (November 2024 – March 2025)

5 Yr Old			Class	Yr	Mth	Milk	Fat	%F	Prot	%P	M	F	P	Comp	Owner	
1	BSCANF13012492	KEVIOTT ACRES CADENCE FARRAH	G	76	5	2	14356	520	3.6	502	3.5	323	295	322	940	KENILCREST FARMS, ON
2	BSCANF12635813	NOR BELLA BIG STAR SLURPY	EX	93	5	5	13979	603	4.3	444	3.2	307	335	279	921	NOR BELLA ACRES INC., ON
3	BSCANF13027687	FOUR OAK TEQUILA ELLEN	VG	87	5	2	13170	565	4.3	447	3.4	296	321	287	904	FOUR OAK FARMS, MB
4	BSCANF45000917	GUBELMAN DYNAMITE HAZEL	EX	90	5	2	12872	610	4.7	522	4.1	292	345	339	976	GUBELMANN BROWN SWISS LTD., ON
5	BSCANF13012460	KEVIOTT ACRES BIVER ESTELE	VG	85	5	9	12835	543	4.2	461	3.6	295	310	303	908	KENILCREST FARMS, ON
6	BSCANF45000932	GUBELMAN PHIL DELILA	EX	90	5	0	12585	628	5	498	4	287	357	325	969	GUBELMANN BROWN SWISS LTD., ON
7	BSCANF13012493	KEVIOTT ACRES DDEVIL FRANCIS	GP	82	5	0	12297	532	4.3	443	3.6	277	299	286	862	KENILCREST FARMS, ON
8	BSCANF110802356	BALZANES FAIRY SEASIDEBLOOM	EX	90	5	11	12123	494	4.1	438	3.6	276	282	284	842	FERME GENO INC & KORALIE NAUD, QC
9	BSCANF13235846	MAPLE BOOM EPSTEINEN			5	5	11708	523	4.5	447	3.8	261	295	285	841	RIMANN'S MAPLE BOOM FARM, ON
10	BSCANF12635818	NOR BELLA BIVER DAYA	VG	85	5	0	11604	531	4.6	406	3.5	259	300	259	818	NOR BELLA ACRES INC., ON

Mature Cow			Class	Yr	Mth	Milk	Fat	%F	Prot	%P	M	F	P	Comp	Owner	
1	BSCANF109621984	BROWN HEAVEN T JEAVERISSA-ET	EX	91	7	11	12857	575	4.5	446	3.5	274	314	272	860	FERME BROWN HEAVEN, QC
2	BSUSAF68193676	LAIRDS TOTO JINGLE BELLE	VG	87	6	1	12495	530	4.2	430	3.4	274	294	270	838	TRINITY HOLSTEINS, BC
3	BSCANF110595308	LAPOKITA SEASIDEBLOOM PEACHE	VG	87	6	11	12284	476	3.9	441	3.6	267	263	274	804	FERME-ECOLE LA POKITA, QC
4	BSCANF12299642	GUBELMAN BIVER DOMINIC	EX	94	7	7	12213	583	4.8	472	3.9	265	322	293	880	GUBELMANN BROWN SWISS LTD., ON
5	BSCANF110311825	RAMCO NOLIMITS JAVA	GP	82	6	6	12029	546	4.5	424	3.5	262	300	265	827	FERME RAMCO INC., QC
6	BSCANF110603248	BROWN HEAVEN BIG STAR CHARMIN	VG	87	6	2	11855	529	4.5	440	3.7	278	311	295	884	FERME BROWN HEAVEN, QC
7	BSCANF12821595	BATESDALE THUNDER ROMY	EX	90	6	5	11699	485	4.2	409	3.5	255	266	256	777	ROSBETT FARMS LTD, ON
8	BSCANF45000891	GUBELMAN BIVER DRAGON	VG	88	6	1	11655	497	4.3	451	3.9	259	279	287	825	GUBELMANN BROWN SWISS LTD., ON
9	BSCANF12785542	MAPLE BOOM HARRISANA			6	2	11481	478	4.2	378	3.3	255	269	239	763	RIMANN'S MAPLE BOOM FARM, ON
10	BSCANF109239824	MILEC TWILIGHT BRIOCHE	EX	90	7	10	11355	448	4	400	3.5	263	264	265	792	FERME MCF LECLERC INC., QC

Aged Cow			Class	Yr	Mth	Milk	Fat	%F	Prot	%P	M	F	P	Comp	Owner	
1	BSCANF108311093	RAMCO ASTEROID PINTO	GP	83	10	8	11444	429	3.8	379	3.3	250	242	237	729	FERME RAMCO INC., QC
2	BSCANF11625312	GUBELMAN VIGOR PANDORA	GP	82	10	5	9151	395	4.3	331	3.6	203	226	209	638	LEONARD SPEARS & ERIC SPEARS, ON

10 Top Fat Producers (November 2024 – March 2025)

Yearlings		Class	Yr	Mth	Milk	Fat	%F	Prot	%P	M	F	P	Comp	Owner		
1	BSCANF14224246	KOOPYCREST OLYMPIC MEADOW	VG	88	1	11	10894	469	4.3	382	3.5	334	355	335	1024	SHAWN KOOPMANS, ON
2	BSCANF14374766	MAPLE BOOM VIPLY 952			1	10	9620	444	4.6	343	3.6	295	334	301	930	RIMANN'S MAPLE BOOM FARM, ON
3	BSCANF14374787	MAPLE BOOM VERITAS 973			1	10	9431	434	4.6	351	3.7	308	347	328	983	RIMANN'S MAPLE BOOM FARM, ON
4	BSCANF120426026	BROWN HEAVEN APPLE FRESH	VG	88	1	11	8188	418	5.1	323	3.9	248	310	281	839	FERME BROWN HEAVEN, QC
4	BSCANF45001110	GUBELMAN OLYMPIC DILANA	VG	85	1	10	9428	418	4.4	338	3.6	308	334	316	958	GUBELMANN BROWN SWISS LTD., ON
5	BSCANF120908665	SCHWEIZER ZAPATA EVANY	GP	82	1	10	8831	414	4.7	328	3.7	293	337	312	942	LA FERME HANS ENR., QC
6	BSCANF14003368	FOUR OAK ANTONOV TURBO			1	11	9175	409	4.5	298	3.2	307	333	286	926	FOUR OAK FARMS, MB
7	BSCANF120908655	SCHWEIZER ELISIUM LAIKA	VG	85	1	10	9097	408	4.5	341	3.8	293	324	313	930	LA FERME HANS ENR., QC
8	BSCANF14344405	KENILCREST CAN DUE MISTY	GP	83	1	10	10098	383	3.8	349	3.5	315	292	312	919	KENILCREST FARMS, ON
9	BSCANF14374775	MAPLE BOOM O MALLEY 961			1	9	8455	382	4.5	325	3.8	264	292	290	846	RIMANN'S MAPLE BOOM FARM, ON
10	BSCANF14374788	MAPLE BOOM VERITAS 974			1	9	8742	379	4.3	326	3.7	300	320	322	942	RIMANN'S MAPLE BOOM FARM, ON
10	BSCANF14374772	MAPLE BOOM DAIRY KING 958			1	9	9148	379	4.1	336	3.7	286	289	300	875	RIMANN'S MAPLE BOOM FARM, ON

Jr. 2 Yr Old		Class	Yr	Mth	Milk	Fat	%F	Prot	%P	M	F	P	Comp	Owner		
1	BSUSAF68222653	LAIRDS DYNAMITE KRISSY	VG	85	2	3	8772	446	5.1	345	3.9	268	335	303	906	WISSEVIEW FARMS, BC
2	BSCANF14245339	SACHOLM ELISIUM DAMON	GP	82	2	2	9834	441	4.5	331	3.4	288	320	278	886	SACHOLM BROWN SWISS, ON
3	BSCANF120711039	MÉLICKA JOHANN DROLY	VG	85	2	0	9705	435	4.5	317	3.3	289	318	269	876	FERME MELICKA 1997 INC., QC
4	BSCANF13927654	STRADOW SEASIDE BLOOM UNO			2	4	9076	431	4.8	337	3.7	255	299	272	826	STRADOW FARM INC., AB
4	BSCANF14220875	NOR BELLA TU SG EMMA	VG	87	2	2	10382	431	4.2	341	3.3	300	306	282	888	NOR BELLA ACRES INC., ON
5	BSCANF13690527	EXCELSIOR KASPER MUDSILL	GP	80	2	0	10193	422	4.1	341	3.4	317	322	304	943	EXCELSIOR FARMS INC, ON
6	BSCANF14220878	NOR BELLA PETE ROSE ROSALIE	VG	86	2	3	9857	421	4.3	313	3.2	281	296	254	831	NOR BELLA ACRES INC., ON
7	BSCANF120426028	BROWN HEAVEN HUGE FANTANA	VG	85	2	1	8324	414	5	304	3.6	255	311	267	833	FERME BROWN HEAVEN, QC
8	BSCANF110227203	LIMA SECRET OF KORINE	GP	80	2	5	9779	411	4.2	375	3.8	271	282	298	851	FERME LIMA, QC
9	BSCANF14139279	STRADOW SASCHA NORA	GP	83	2	0	9127	409	4.5	319	3.5	297	332	298	927	STRADOW FARM INC., AB
10	BSCANF120664205	SCHWEIZER JONMAR NAOKI			2	1	8845	401	4.5	330	3.7	260	288	277	825	FERME SPRINGMEADOW INC., QC
10	BSCANF120815509	RAMCO APPLE ECLIPSE	GP	82	2	1	9138	401	4.4	351	3.8	284	304	311	899	FERME RAMCO INC., QC
10	BSCANF120447895	WACOMA JONMAR MARTHA	G	79	2	0	9631	401	4.2	339	3.5	294	302	297	893	R. PARE ET FILS INC, QC

Sr. 2 Yr Old		Class	Yr	Mth	Milk	Fat	%F	Prot	%P	M	F	P	Comp	Owner		
1	BSCANF13928438	MAPLE BOOM VATICAN			2	10	13189	598	4.5	483	3.7	374	418	394	1186	RIMANN'S MAPLE BOOM FARM, ON
2	BSCANF120729369	BELFLAU ELMSTAR BENITA	VG	85	2	11	11660	518	4.4	418	3.6	326	357	336	1019	FERME BELFAU INC., QC
3	BSCANF14066532	KENILCREST BANKIT ELVIRA	VG	85	2	10	11311	478	4.2	415	3.7	301	317	314	932	KENILCREST FARMS, ON
4	BSCANF14066539	KENILCREST BANK IT JOEY	GP	83	2	9	10213	471	4.6	375	3.7	278	318	293	889	KENILCREST FARMS, ON
5	BSCANF14066534	KENILCREST DYNAMITE LIZ	GP	82	2	10	10452	459	4.4	387	3.7	278	304	293	875	KENILCREST FARMS, ON
6	BSCANF13928426	MAPLE BOOM HAZELLE			2	11	10054	458	4.6	402	4	264	299	302	865	RIMANN'S MAPLE BOOM FARM, ON
7	BSCANF13928440	MAPLE BOOM FIJI			2	10	10191	449	4.4	389	3.8	281	305	306	892	RIMANN'S MAPLE BOOM FARM, ON
8	BSCANF13928439	MAPLE BOOM HANNOVER			2	10	9370	440	4.7	337	3.6	254	295	261	810	RIMANN'S MAPLE BOOM FARM, ON
9	BSCANF111575496	BROWN HEAVEN HUGE SALLY DALLY	VG	88	2	10	10391	435	4.2	368	3.5	280	292	283	855	FERME BROWN HEAVEN, QC
10	BSCANF120664178	SCHWEIZER HUGE TWISTER	GP	83	2	11	11665	432	3.7	404	3.5	311	286	308	905	LA FERME HANS ENR., QC

10 Top Fat Producers (November 2024 – March 2025)

Jr. 3 Yr Old		Class	Yr	Mth	Milk	Fat	%F	Prot	%P	M	F	P	Comp	Owner	
1	BSCANF111575494	BROWN HEAVEN ELMSTAR FANCYGIRL-ET	VG 88	3	1	10264	558	5.4	364	3.5	275	370	278	923	FERME BROWN HEAVEN, QC
2	BSCANF13928419	MAPLE BOOM HOHOHO		3	1	12334	547	4.4	441	3.6	322	355	329	1006	RIMANN'S MAPLE BOOM FARM, ON
3	BSCANF45001030	GUBELMAN SILVER DORIS	VG 87	3	3	11394	546	4.8	432	3.8	287	339	311	937	GUBELMANN BROWN SWISS LTD., ON
4	BSCANF13733690	KENILCREST APEX BRITNEY	VG 87	3	2	11571	528	4.6	434	3.8	305	343	326	974	KENILCREST FARMS, ON
5	BSCANF13784440	NOR BELLA FALK SKY	VG 85	3	3	11213	508	4.5	390	3.5	285	319	283	887	NOR BELLA ACRES INC., ON
6	BSCANF120325120	SCHWEIZER AMIR BAMBI	VG 87	3	2	11202	500	4.5	402	3.6	284	314	291	889	FERME MELICSKA 1997 INC., QC
7	BSCANF13928430	MAPLE BOOM HEMI		3	0	9922	463	4.7	385	3.9	268	309	296	873	RIMANN'S MAPLE BOOM FARM, ON
8	BSCANF111921510	MÉLICSKA BISTO CANELLE	VG 86	3	5	10613	461	4.3	388	3.7	268	292	281	841	FERME MELICSKA 1997 INC., QC
9	BSCANF45001049	GUBELMAN OLYMPIC DIANA	VG 85	3	2	11152	451	4	399	3.6	295	297	302	894	GUBELMANN BROWN SWISS LTD., ON
10	BSCANF111575495	LENTRE ROCHE NESCARDO ETOILE	VG 88	3	1	10216	447	4.4	364	3.6	273	296	278	847	FERME VANNOD ET ASSOCIES ENRG, QC
Sr. 3 Yr Old		Class	Yr	Mth	Milk	Fat	%F	Prot	%P	M	F	P	Comp	Owner	
1	BSCANF12635826	NOR BELLA SALOMON POSEY	VG 86	3	11	13910	553	4	459	3.3	338	335	319	992	NOR BELLA ACRES INC., ON
2	BSCANF45000997	GUBELMAN KINGSLEY DARBY	VG 88	3	10	12821	543	4.2	443	3.5	311	329	308	948	GUBELMANN BROWN SWISS LTD., ON
3	BSCANF13344232	GUBELMAN KAXILIA	GP 84	3	8	10009	542	5.4	337	3.4	244	333	236	813	SYLVAIN BOULANGER, CHRISTINE DULAC, FERME CAB, QC
4	BSCANF13673347	FOUR OAK HUGE THUMPER	VG 87	3	6	12269	526	4.3	405	3.3	331	359	314	1004	FOUR OAK FARMS, MB
5	BSCANF13721111	MAPLE BOOM HOLLY		3	11	12461	522	4.2	434	3.5	313	327	313	953	RIMANN'S MAPLE BOOM FARM, ON
6	BSCANF45001001	GUBELMAN ANTONOV DORIE	VG 85	3	9	10860	507	4.7	396	3.6	265	309	277	851	GUBELMANN BROWN SWISS LTD., ON
7	BSCANF13684684	LONE PRAIRIE APEX KANDOO	GP 82	3	9	10483	500	4.8	415	4	253	299	286	838	RICHARD & ASHLEY VANDER KOOI, BC
8	BSCANF120265337	MILEC PASSAT BALLY-ET	GP 81	3	11	10326	499	4.8	366	3.5	254	307	259	820	FERME MELICSKA 1997 INC., QC
9	BSCANF111575478	BROWN HEAVEN BIVER CHEESE	VG 89	3	7	9913	498	5	393	4	242	302	275	819	FERME BROWN HEAVEN, QC
10	BSCANF13791634	MAYCCO EASTON FLAVOUR		3	10	9913	482	4.9	403	4.1	238	287	276	801	DEREK PELCHAT, QC
4 Yr Old		Class	Yr	Mth	Milk	Fat	%F	Prot	%P	M	F	P	Comp	Owner	
1	BSCANF13027699	FOUR OAK FACT UME	VG 86	4	8	14777	714	4.8	499	3.4	335	408	322	1065	FOUR OAK FARMS, MB
2	BSCANF111575450	BROWN HEAVEN F & F SEA DALLY	EX 93	4	4	12620	624	4.9	449	3.6	315	388	321	1024	FERME BROWN HEAVEN, QC
3	BSCANF13027710	FOUR OAK FACT TIGGER	VG 86	4	2	14750	620	4.2	501	3.4	348	367	339	1054	FOUR OAK FARMS, MB
4	BSCANF13594828	SPRING ROSE GENOXBOY PINEAPPLE	GP 81	4	0	12093	605	5	425	3.5	302	376	304	982	SPRINGROSE FARMS LTD, ON
5	BSCANF13027706	FOUR OAK FACT KEENER	GP 83	4	8	11836	582	4.9	372	3.1	289	356	261	906	FOUR OAK FARMS, MB
6	BSCANF111618454	LITTLE HILL ALL-IN MIRACLE	GP 83	4	3	11729	579	4.9	395	3.4	296	365	286	947	FERME PLEIN SOLEIL (2010) INC, QC
7	BSCANF13673328	FOUR OAK DEFENDER VICKI	VG 85	4	0	10566	551	5.2	375	3.5	255	334	259	848	FOUR OAK FARMS, MB
8	BSCANF111575457	BROWN HEAVEN WF RAISINBRAN	EX 90	4	3	11443	545	4.8	414	3.6	287	339	296	922	FERME BROWN HEAVEN, QC
8	BSCANF120133110	SCHWEIZER SEASIDE BLOOM BLUE	VG 86	4	4	13325	545	4.1	458	3.4	311	321	305	937	LA FERME HANS ENR., QC
9	BSCANF13235866	MAPLE BOOM PUCKRAT		4	11	12449	541	4.3	462	3.7	298	324	316	938	RIMANN'S MAPLE BOOM FARM, ON
10	BSCANF13570149	ELOC BIVER RETAKE	VG 88	4	1	11089	531	4.8	422	3.8	261	311	285	857	A. DEAN COLE, NS
10	BSCANF13012494	KEVIOTT ACRES CAR FUMBLE	GP 80	4	10	12257	531	4.3	440	3.6	282	303	289	874	KENILCREST FARMS, ON
5 Yr Old		Class	Yr	Mth	Milk	Fat	%F	Prot	%P	M	F	P	Comp	Owner	
1	BSCANF45000932	GUBELMAN PHIL DELILA	EX 90	5	0	12585	628	5	498	4	287	357	325	969	GUBELMANN BROWN SWISS LTD., ON
2	BSCANF45000917	GUBELMAN DYNAMITE HAZEL	EX 90	5	2	12872	610	4.7	522	4.1	292	345	339	976	GUBELMANN BROWN SWISS LTD., ON
3	BSCANF12635813	NOR BELLA BIG STAR SLURPY	EX 93	5	5	13979	603	4.3	444	3.2	307	335	279	921	NOR BELLA ACRES INC., ON
4	BSCANF13063167	MAPLE BOOM HACKIRY		5	8	11310	586	5.2	411	3.6	259	337	269	865	RIMANN'S MAPLE BOOM FARM, ON
5	BSCANF13027687	FOUR OAK TEQUILA ELLEN	VG 87	5	2	13170	565	4.3	447	3.4	296	321	287	904	FOUR OAK FARMS, MB
6	BSCANF13012463	KEVIOTT ACRES ALLSTAR ERIKA	VG 88	5	5	11333	556	4.9	402	3.5	264	325	266	855	KENILCREST FARMS, ON
7	BSCANF13012460	KEVIOTT ACRES BIVER ESTELE	VG 85	5	9	12835	543	4.2	461	3.6	295	310	303	908	KENILCREST FARMS, ON
8	BSCANF13012493	KEVIOTT ACRES DDEVIL FRANCIS	GP 82	5	0	12297	532	4.3	443	3.6	277	299	286	862	KENILCREST FARMS, ON
9	BSCANF12635818	NOR BELLA BIVER DAYA	VG 85	5	0	11604	531	4.6	406	3.5	259	300	259	818	NOR BELLA ACRES INC., ON
10	BSCANF13235846	MAPLE BOOM EPSTEINEN		5	5	11708	523	4.5	447	3.8	261	295	285	841	RIMANN'S MAPLE BOOM FARM, ON
Mature Cow		Class	Yr	Mth	Milk	Fat	%F	Prot	%P	M	F	P	Comp	Owner	
1	BSCANF12299642	GUBELMAN BIVER DOMINIC	EX 94	7	7	12213	583	4.8	472	3.9	265	322	293	880	GUBELMANN BROWN SWISS LTD., ON
2	BSCANF109621984	BROWN HEAVEN T JEAVERISSA-ET	EX 91	7	11	12857	575	4.5	446	3.5	274	314	272	860	FERME BROWN HEAVEN, QC
3	BSCANF110311825	RAMCO NOLIMITS JAVA	GP 82	6	6	12029	546	4.5	424	3.5	262	300	265	827	FERME RAMCO INC., QC
4	BSCANF12299658	GUBELMAN DOMINIC DAYDREAM	EX 92	7	3	11105	538	4.8	474	4.3	237	292	289	818	GUBELMANN BROWN SWISS LTD., ON
5	BSUSAF68193676	LAIRDS TOTO JINGLE BELLE	VG 87	6	1	12495	530	4.2	430	3.4	274	294	270	838	TRINITY HOLSTEINS, BC
6	BSCANF110603248	BROWN HEAVEN BIG STAR CHARMIN	VG 87	6	2	11855	529	4.5	440	3.7	278	311	295	884	FERME BROWN HEAVEN, QC
7	BSCANF45000891	GUBELMAN BIVER DRAGON	VG 88	6	1	11655	497	4.3	451	3.9	259	279	287	825	GUBELMANN BROWN SWISS LTD., ON
8	BSCANF12821595	BATESDALE THUNDER ROMY	EX 90	6	5	11699	485	4.2	409	3.5	255	266	256	777	ROESBETT FARMS LTD, ON
9	BSCANF12374082	LONE PRAIRIE FROSTY HIGH	VG 86	8	1	10021	483	4.8	353	3.5	218	265	219	702	RICHARD & ASHLEY VANDER KOOI, BC
10	BSCANF12651306	EXCELSIOR CADENCE MYRTHE	GP 82	6	5	11020	480	4.4	390	3.5	237	262	239	738	EXCELSIOR FARMS INC, ON
Aged Cow		Class	Yr	Mth	Milk	Fat	%F	Prot	%P	M	F	P	Comp	Owner	
1	BSCANF108311093	RAMCO ASTEROID PINTO	GP 83	10	8	11444	429	3.8	379	3.3	250	242	237	729	FERME RAMCO INC., QC
2	BSCANF11625312	GUBELMAN VIGOR PANDORA	GP 82	10	5	9151	395	4.3	331	3.6	203	226	209	638	LEONARD SPEARS & ERIC SPEARS, ON



10 Top Protein Producers (November 2024 – March 2025)

Yearlings			Class	Yr	Mth	Milk	Fat	%F	Prot	%P	M	F	P	Comp	Owner	
1	BSCANF14224246	KOOPYCREST OLYMPIC MEADOW	VG	88	1	11	10894	469	4.3	382	3.5	334	355	335	1024	SHAWN KOOPMANS, ON
2	BSCANF14374787	MAPLE BOOM VERITAS 973			1	10	9431	434	4.6	351	3.7	308	347	328	983	RIMANN'S MAPLE BOOM FARM, ON
3	BSCANF14344405	KENILCREST CAN DUE MISTY	GP	83	1	10	10098	383	3.8	349	3.5	315	292	312	919	KENILCREST FARMS, ON
4	BSCANF14374766	MAPLE BOOM VIPLY 952			1	10	9620	444	4.6	343	3.6	295	334	301	930	RIMANN'S MAPLE BOOM FARM, ON
5	BSCANF120908655	SCHWEIZER ELISIUM LAIKA	VG	85	1	10	9097	408	4.5	341	3.8	293	324	313	930	LA FERME HANS ENR., QC
6	BSCANF45001110	GUBELMAN OLYMPIC DILANA	VG	85	1	10	9428	418	4.4	338	3.6	308	334	316	958	GUBELMANN BROWN SWISS LTD., ON
7	BSCANF14374772	MAPLE BOOM DAIRY KING 958			1	9	9148	379	4.1	336	3.7	286	289	300	875	RIMANN'S MAPLE BOOM FARM, ON
8	BSCANF120908665	SCHWEIZER ZAPATA EVANY	GP	82	1	10	8831	414	4.7	328	3.7	293	337	312	942	LA FERME HANS ENR., QC
9	BSCANF14374788	MAPLE BOOM VERITAS 974			1	9	8742	379	4.3	326	3.7	300	320	322	942	RIMANN'S MAPLE BOOM FARM, ON
10	BSCANF14374775	MAPLE BOOM O MALLEY 961			1	9	8455	382	4.5	325	3.8	264	292	290	846	RIMANN'S MAPLE BOOM FARM, ON

Jr. 2 Yr Old			Class	Yr	Mth	Milk	Fat	%F	Prot	%P	M	F	P	Comp	Owner	
1	BSCANF110227203	LIMA SECRET OF KORINE	GP	80	2	5	9779	411	4.2	375	3.8	271	282	298	851	FERME LIMA, QC
2	BSCANF120815509	RAMCO APPLE ECLIPSE	GP	82	2	1	9138	401	4.4	351	3.8	284	304	311	899	FERME RAMCO INC., QC
3	BSCANF13986344	EDUCATE-A-KID GS 484 BOMB	GP	81	2	0	9117	350	3.8	348	3.8	275	259	300	834	EAGLE ACRES DAIRY CENTRE, BC
4	BSUSAF68222653	LAIRDS DYNAMITE KRISSY	VG	85	2	3	8772	446	5.1	345	3.9	268	335	303	906	WISSELVIEW FARMS, BC
5	BSCANF14220875	NOR BELLA TU SG EMMA	VG	87	2	2	10382	431	4.2	341	3.3	300	306	282	888	NOR BELLA ACRES INC., ON
5	BSCANF13690527	EXCELSIOR KASPER MUDSILL	GP	80	2	0	10193	422	4.1	341	3.4	317	322	304	943	EXCELSIOR FARMS INC, ON
6	BSCANF120447895	WACOMA JONMAR MARTHA	G	79	2	0	9631	401	4.2	339	3.5	294	302	297	893	R. PARE ET FILS INC, QC
7	BSCANF13927654	STRADOW SEASIDE BLOOM UNO			2	4	9076	431	4.8	337	3.7	255	299	272	826	STRADOW FARM INC., AB
8	BSCANF14245339	SACHOLM ELISIUM DAMON	GP	82	2	2	9834	441	4.5	331	3.4	288	320	278	886	SACHOLM BROWN SWISS, ON
9	BSCANF120664205	SCHWEIZER JONMAR NAOKI			2	1	8845	401	4.5	330	3.7	260	288	277	825	FERME SPRINGMEADOW INC., QC
10	BSCANF120823428	KILDARE DREAMER CORONA	GP	83	2	1	9135	350	3.8	328	3.6	270	254	276	800	FERME KILDARE, QC

Sr. 2 Yr Old		Class	Yr	Mth	Milk	Fat	%F	Prot	%P	M	F	P	Comp	Owner	
1	BSCANF13928438	MAPLE BOOM VATICAN			2	10	13189	598	4.5	483	3.7	374	418	394	1186 RIMANN'S MAPLE BOOM FARM, ON
2	BSCANF120729369	BELFLAU ELMSTAR BENITA	VG	85	2	11	11660	518	4.4	418	3.6	326	357	336	1019 FERME BELFAU INC., QC
3	BSCANF14066532	KENILCREST BANKIT ELVIRA	VG	85	2	10	11311	478	4.2	415	3.7	301	317	314	932 KENILCREST FARMS, ON
4	BSCANF120664178	SCHWEIZER HUGE TWISTER	GP	83	2	11	11665	432	3.7	404	3.5	311	286	308	905 LA FERME HANS ENR., QC
5	BSCANF13928426	MAPLE BOOM HAZELLE			2	11	10054	458	4.6	402	4	264	299	302	865 RIMANN'S MAPLE BOOM FARM, ON
6	BSCANF13928440	MAPLE BOOM FIJI			2	10	10191	449	4.4	389	3.8	281	305	306	892 RIMANN'S MAPLE BOOM FARM, ON
7	BSCANF14066534	KENILCREST DYNAMITE LIZ	GP	82	2	10	10452	459	4.4	387	3.7	278	304	293	875 KENILCREST FARMS, ON
8	BSCANF14066539	KENILCREST BANK IT JOEY	GP	83	2	9	10213	471	4.6	375	3.7	278	318	293	889 KENILCREST FARMS, ON
9	BSCANF111575496	BROWN HEAVEN HUGE SALLY DALLY	VG	88	2	10	10391	435	4.2	368	3.5	280	292	283	855 FERME BROWN HEAVEN, QC
9	BSCANF120405826	GRANMONT HIGHLIGHT SALY			2	10	10311	424	4.1	368	3.6	274	281	279	834 FERME DOMAINE DE LA RIVIÈRE INC, QC
10	BSCANF120581848	MONTEN BABE CADENCE	VG	85	2	11	11107	388	3.5	365	3.3	292	254	274	820 FERME MONTEN 9088-9593 QUEBEC INC, QC

Jr. 3 Yr Old			Class	Yr	Mth	Milk	Fat	%F	Prot	%P	M	F	P	Comp	Owner
1	BSCANF13928419	MAPLE BOOM HOHOHO		3	1	12334	547	4.4	441	3.6	322	355	329	1006	RIMANN'S MAPLE BOOM FARM, ON
2	BSCANF13733690	KENILCREST APEX BRITNEY	VG	87	3	2	11571	528	4.6	434	3.8	305	343	326	974 KENILCREST FARMS, ON
3	BSCANF45001030	GUBELMAN SILVER DORIS	VG	87	3	3	11394	546	4.8	432	3.8	287	339	311	937 GUBELMANN BROWN SWISS LTD., ON
4	BSCANF120325120	SCHWEIZER AMIR BAMBI	VG	87	3	2	11202	500	4.5	402	3.6	284	314	291	889 FERME MELICKSA 1997 INC., QC
5	BSCANF45001049	GUBELMAN OLYMPIC DIANA	VG	85	3	2	11152	451	4	399	3.6	295	297	302	894 GUBELMANN BROWN SWISS LTD., ON
6	BSCANF13784440	NOR BELLA FALK SKY	VG	85	3	3	11213	508	4.5	390	3.5	285	319	283	887 NOR BELLA ACRES INC., ON
7	BSCANF111921510	MÉLICKSA BISTO CANELLE	VG	86	3	5	10613	461	4.3	388	3.7	268	292	281	841 FERME MELICKSA 1997 INC., QC
8	BSCANF13928428	MAPLE BOOM DOLLY		3	0	9874	428	4.3	387	3.9	262	283	293	838	RIMANN'S MAPLE BOOM FARM, ON
9	BSCANF13928430	MAPLE BOOM HEMI		3	0	9922	463	4.7	385	3.9	268	309	296	873	RIMANN'S MAPLE BOOM FARM, ON
10	BSCANF45001034	GUBELMAN KADE DUBLIN	GP	82	3	4	10696	409	3.8	374	3.5	272	260	273	805 PHILIP BAUMAN, ON

Sr. 3 Yr Old		Class	Yr	Mth	Milk	Fat	%F	Prot	%P	M	F	P	Comp	Owner	
1	BSCANF12635826	NOR BELLA SALOMON POSEY	VG	86	3	11	13910	553	4	459	3.3	338	335	319	992 NOR BELLA ACRES INC., ON
2	BSCANF45000997	GUBELMAN KINGSLEY DARBY	VG	88	3	10	12821	543	4.2	443	3.5	311	329	308	948 GUBELMANN BROWN SWISS LTD., ON
3	BSCANF13721111	MAPLE BOOM HOLLY			3	11	12461	522	4.2	434	3.5	313	327	313	953 RIMANN'S MAPLE BOOM FARM, ON
4	BSCANF12651489	EXCELSIOR STANDOUT MEDICINE	VG	88	3	11	13236	471	3.6	422	3.2	314	280	285	879 EXCELSIOR FARMS INC, ON
5	BSCANF13684684	LONE PRAIRIE APEX KANDOO	GP	82	3	9	10483	500	4.8	415	4	253	299	286	838 RICHARD & ASHLEY VANDER KOOI, BC
6	BSCANF13673347	FOUR OAK HUGE THUMPER	VG	87	3	6	12269	526	4.3	405	3.3	331	359	314	1004 FOUR OAK FARMS, MB
7	BSCANF13733677	KEVIOTT ACRES HAWK VALERIE	GP	82	3	9	10855	470	4.3	404	3.7	263	287	281	831 KENILCREST FARMS, ON
8	BSCANF13791634	MAYCCO EASTON FLAVOUR			3	10	9913	482	4.9	403	4.1	238	287	276	801 DEREK PELCHAT, QC
9	BSCANF45001028	GUBELMAN DEFENDER LUCKY	EX	90	3	9	11357	437	3.9	402	3.5	289	275	291	855 GUBELMANN BROWN SWISS LTD., ON
10	BSCANF45001001	GUBELMAN ANTONOV DORIE	VG	85	3	9	10860	507	4.7	396	3.6	265	309	277	851 GUBELMANN BROWN SWISS LTD., ON

4 Yr Old			Class	Yr	Mth	Milk	Fat	%F	Prot	%P	M	F	P	Comp	Owner	
1	BSCANF13027710	FOUR OAK FACT TIGGER	VG	86	4	2	14750	620	4.2	501	3.4	348	367	339	1054	FOUR OAK FARMS, MB
2	BSCANF13027699	FOUR OAK FACT UME	VG	86	4	8	14777	714	4.8	499	3.4	335	408	322	1065	FOUR OAK FARMS, MB
3	BSCANF13569938	MAPLE BOOM PUCKLO			2		13610	467	3.4	462	3.4	325	280	314	919	RIMANN'S MAPLE BOOM FARM, ON
3	BSCANF13235866	MAPLE BOOM PUCKRAT			4	11	12449	541	4.3	462	3.7	298	324	316	938	RIMANN'S MAPLE BOOM FARM, ON
4	BSCANF120133110	SCHWEIZER SEASIDEBLOOM BLUE	VG	86	4	4	13325	545	4.1	458	3.4	311	321	305	937	LA FERME HANS ENR., QC
5	BSCANF13526951	KEVIOTT ACRES APEX JENNY	GP	82	4	2	12918	503	3.9	455	3.5	306	298	307	911	KENILCREST FARMS, ON
6	BSCANF111575450	BROWN HEAVEN F & F SEA DALLY	EX	93	4	4	12620	624	4.9	449	3.6	315	388	321	1024	FERME BROWN HEAVEN, QC
6	BSCANF111575465	BROWN HEAVEN SALOMON TIDBIT	EX	92	4	9	12232	528	4.3	449	3.7	292	314	305	911	FERME BROWN HEAVEN, QC
7	BSCANF13012494	KEVIOTT ACRES CAR FUMBLE	GP	80	4	10	12257	531	4.3	440	3.6	282	303	289	874	KENILCREST FARMS, ON
8	BSCANF13594828	SPRING ROSE GENOXBOY PINEAPPLE	GP	81	4	0	12093	605	5	425	3.5	302	376	304	982	SPRINGROSE FARMS LTD, ON
9	BSCANF13570149	ELOC BIVER RETAKE	VG	88	4	1	11089	531	4.8	422	3.8	261	311	285	857	A. DEAN COLE, NS
10	BSCANF111629577	SIKA TEQUILA ROMENTIQUE	GP	83	4	1	12074	511	4.2	419	3.5	296	312	293	901	FERME SIKA, QC

10 Top Protein Producers (November 2024 – March 2025)

5 Yr Old		Class	Yr	Mth	Milk	Fat	%F	Prot	%P	M	F	P	Comp	Owner		
1	BSCANF45000917	GUBELMAN DYNAMITE HAZEL	EX	90	5	2	12872	610	4.7	522	4.1	292	345	339	976	GUBELMANN BROWN SWISS LTD., ON
2	BSCANF13012492	KEVIOTT ACRES CADENCE FARRAH	G	76	5	2	14356	520	3.6	502	3.5	323	295	322	940	KENILCREST FARMS, ON
3	BSCANF45000932	GUBELMAN PHIL DELILA	EX	90	5	0	12585	628	5	498	4	287	357	325	969	GUBELMANN BROWN SWISS LTD., ON
4	BSCANF13012460	KEVIOTT ACRES BIVER ESTELE	VG	85	5	9	12835	543	4.2	461	3.6	295	310	303	908	KENILCREST FARMS, ON
5	BSCANF13027687	FOUR OAK TEQUILA ELLEN	VG	87	5	2	13170	565	4.3	447	3.4	296	321	287	904	FOUR OAK FARMS, MB
5	BSCANF13235846	MAPLE BOOM EPSTEINER			5	5	11708	523	4.5	447	3.8	261	295	285	841	RIMANN'S MAPLE BOOM FARM, ON
6	BSCANF12635813	NOR BELLA BIG STAR SLURPY	EX	93	5	5	13979	603	4.3	444	3.2	307	335	279	921	NOR BELLA ACRES INC., ON
7	BSCANF13012493	KEVIOTT ACRES DDEVIL FRANCIS	GP	82	5	0	12297	532	4.3	443	3.6	277	299	286	862	KENILCREST FARMS, ON
8	BSCANF110802356	BALZANES FAIRY SEASIDEBLOOM	EX	90	5	11	12123	494	4.1	438	3.6	276	282	284	842	FERME GENO INC & KORALIE NAUD, QC
9	BSCANF13012472	KEVIOTT ACRES TEQUILA ELENA	GP	80	5	11	11367	482	4.2	417	3.7	247	266	259	772	KENILCREST FARMS, ON
10	BSCANF13063167	MAPLE BOOM HACKIRY			5	8	11310	586	5.2	411	3.6	259	337	269	865	RIMANN'S MAPLE BOOM FARM, ON
Mature Cow		Class	Yr	Mth	Milk	Fat	%F	Prot	%P	M	F	P	Comp	Owner		
1	BSCANF12299658	GUBELMAN DOMINIC DAYDREAM	EX	92	7	3	11105	538	4.8	474	4.3	237	292	289	818	GUBELMANN BROWN SWISS LTD., ON
2	BSCANF12299642	GUBELMAN BIVER DOMINIC	EX	94	7	7	12213	583	4.8	472	3.9	265	322	293	880	GUBELMANN BROWN SWISS LTD., ON
3	BSCANF45000891	GUBELMAN BIVER DRAGON	VG	88	6	1	11655	497	4.3	451	3.9	259	279	287	825	GUBELMANN BROWN SWISS LTD., ON
4	BSCANF109621984	BROWN HEAVEN T JEAVERISSA-ET	EX	91	7	11	12857	575	4.5	446	3.5	274	314	272	860	FERME BROWN HEAVEN, QC
5	BSCANF110595308	LAPOKITA SEASIDEBLOOM PEACHE	VG	87	6	11	12284	476	3.9	441	3.6	267	263	274	804	FERME-ECOLE LA POKITA, QC
6	BSCANF110603248	BROWN HEAVEN BIG STAR CHARMIN	VG	87	6	2	11855	529	4.5	440	3.7	278	311	295	884	FERME BROWN HEAVEN, QC
7	BSUSAF68193676	LAIRDS TOTO JINGLE BELLE	VG	87	6	1	12495	530	4.2	430	3.4	274	294	270	838	TRINITY HOLSTEINS, BC
8	BSCANF110311825	RAMCO NOLIMITS JAVA	GP	82	6	6	12029	546	4.5	424	3.5	262	300	265	827	FERME RAMCO INC., QC
9	BSCANF12821595	BATESDALE THUNDER ROMY	EX	90	6	5	11699	485	4.2	409	3.5	255	266	256	777	ROESBETT FARMS LTD, ON
10	BSCANF109239824	MILEC TWILIGHT BRIOCHE	EX	90	7	10	11355	448	4	400	3.5	263	264	265	792	FERME MCF LECLERC INC., QC
Aged Cow		Class	Yr	Mth	Milk	Fat	%F	Prot	%P	M	F	P	Comp	Owner		
1	BSCANF108311093	RAMCO ASTEROID PINTO	GP	83	10	8	11444	429	3.8	379	3.3	250	242	237	729	FERME RAMCO INC., QC
2	BSCANF11625312	GUBELMAN VIGOR PANDORA	GP	82	10	5	9151	395	4.3	331	3.6	203	226	209	638	LEONARD SPEARS & ERIC SPEARS, ON

10 Top Composite BCA Producers (November 2024 – March 2025)

Yearlings		Class	Yr	Mth	Milk	Fat	%F	Prot	%P	M	F	P	Comp	Owner		
1	BSCANF14224246	KOOPYCREST OLYMPIC MEADOW	VG	88	1	11	10894	469	4.3	382	3.5	334	355	335	1024	SHAWN KOOPMANS, ON
2	BSCANF14374787	MAPLE BOOM VERITAS 973			1	10	9431	434	4.6	351	3.7	308	347	328	983	RIMANN'S MAPLE BOOM FARM, ON
3	BSCANF45001110	GUBELMAN OLYMPIC DILANA	VG	85	1	10	9428	418	4.4	338	3.6	308	334	316	958	GUBELMANN BROWN SWISS LTD., ON
4	BSCANF14374788	MAPLE BOOM VERITAS 974			1	9	8742	379	4.3	326	3.7	300	320	322	942	RIMANN'S MAPLE BOOM FARM, ON
4	BSCANF120908665	SCHWEIZER ZAPATA EVANY	GP	82	1	10	8831	414	4.7	328	3.7	293	337	312	942	LA FERME HANS ENR., QC
5	BSCANF120908655	SCHWEIZER ELISIUM LAIKA	VG	85	1	10	9097	408	4.5	341	3.8	293	324	313	930	LA FERME HANS ENR., QC
5	BSCANF14374766	MAPLE BOOM VIPLY 952			1	10	9620	444	4.6	343	3.6	295	334	301	930	RIMANN'S MAPLE BOOM FARM, ON
6	BSCANF14003368	FOUR OAK ANTONOV TURBO			1	11	9175	409	4.5	298	3.2	307	333	286	926	FOUR OAK FARMS, MB
7	BSCANF14344405	KENILCREST CAN DUE MISTY	GP	83	1	10	10098	383	3.8	349	3.5	315	292	312	919	KENILCREST FARMS, ON
8	BSCANF45001108	GUBELMAN JORDY DELICIOUS	VG	86	1	11	8695	356	4.1	296	3.4	299	303	295	897	GUBELMANN BROWN SWISS LTD., ON
9	BSCANF14482699	MAPLE BOOM PACTOLE 991			1	10	7651	368	4.8	281	3.7	273	327	288	888	RIMANN'S MAPLE BOOM FARM, ON
10	BSCANF14374772	MAPLE BOOM DAIRY KING 958			1	9	9148	379	4.1	336	3.7	286	289	300	875	RIMANN'S MAPLE BOOM FARM, ON
Jr. 2 Yr Old		Class	Yr	Mth	Milk	Fat	%F	Prot	%P	M	F	P	Comp	Owner		
1	BSCANF13690527	EXCELSIOR KASPER MUDSILL	GP	80	2	0	10193	422	4.1	341	3.4	317	322	304	943	EXCELSIOR FARMS INC, ON
2	BSCANF14139279	STRADOW SASCHA NORA	GP	83	2	0	9127	409	4.5	319	3.5	297	332	298	927	STRADOW FARM INC., AB
3	BSUSAF68222653	LAIRDS DYNAMITE KRISSY	VG	85	2	3	8772	446	5.1	345	3.9	268	335	303	906	WISSELVIEW FARMS, BC
4	BSCANF120815509	RAMCO APPLE ECLIPSE	GP	82	2	1	9138	401	4.4	351	3.8	284	304	311	899	FERME RAMCO INC., QC
5	BSCANF120447895	WACOMA JONMAR MARTHA	G	79	2	0	9631	401	4.2	339	3.5	294	302	297	893	R. PARE ET FILS INC, QC
6	BSCANF14220875	NOR BELLA TU SG EMMA	VG	87	2	2	10382	431	4.2	341	3.3	300	306	282	888	NOR BELLA ACRES INC., ON
7	BSCANF14245339	SACHOLM ELISIUM DAMON	GP	82	2	2	9834	441	4.5	331	3.4	288	320	278	886	SACHOLM BROWN SWISS, ON
8	BSCANF14220885	NOR BELLA EASTON LORETTA LYNN	VG	86	2	0	9796	387	4	320	3.3	304	295	283	882	NOR BELLA ACRES INC., ON
9	BSCANF120711039	MÉLICSKA JOHANN DROLY	VG	85	2	0	9705	435	4.5	317	3.3	289	318	269	876	FERME MELICKA 1997 INC., QC
10	BSCANF120867433	PLEIN SOLEIL TREK TASHA	GP	82	2	0	9408	321	3.4	301	3.2	313	262	287	862	FERME PLEIN SOLEIL (2010) INC, QC
Sr. 2 Yr Old		Class	Yr	Mth	Milk	Fat	%F	Prot	%P	M	F	P	Comp	Owner		
1	BSCANF13928438	MAPLE BOOM VATICAN			2	10	13189	598	4.5	483	3.7	374	418	394	1186	RIMANN'S MAPLE BOOM FARM, ON
2	BSCANF120729369	BELFLAU ELMSTAR BENITA	VG	85	2	11	11660	518	4.4	418	3.6	326	357	336	1019	FERME BELFAU INC., QC
3	BSCANF14066532	KENILCREST BANKIT ELVIRA	VG	85	2	10	11311	478	4.2	415	3.7	301	317	314	932	KENILCREST FARMS, ON
4	BSCANF120664178	SCHWEIZER HUGUE TWISTER	GP	83	2	11	11665	432	3.7	404	3.5	311	286	308	905	LA FERME HANS ENR., QC
5	BSCANF13928440	MAPLE BOOM FIJI			2	10	10191	449	4.4	389	3.8	281	305	306	892	RIMANN'S MAPLE BOOM FARM, ON
6	BSCANF14066539	KENILCREST BANK IT JOEY	GP	83	2	9	10213	471	4.6	375	3.7	278	318	293	889	KENILCREST FARMS, ON
7	BSCANF14066534	KENILCREST DYNAMITE LIZ	GP	82	2	10	10452	459	4.4	387	3.7	278	304	293	875	KENILCREST FARMS, ON
8	BSCANF13928426	MAPLE BOOM HAZELLE			2	11	10054	458	4.6	402	4	264	299	302	865	RIMANN'S MAPLE BOOM FARM, ON
9	BSCANF111575496	BROWN HEAVEN HUGE SALLY DALLY	VG	88	2	10	10391	435	4.2	368	3.5	280	292	283	855	FERME BROWN HEAVEN, QC
10	BSCANF120405826	GRANMONT HIGHLIGHT SALLY			2	10	10311	424	4.1	368	3.6	274	281	279	834	FERME DOMAINE DE LA RIVI?RE INC, QC
Jr. 3 Yr Old		Class	Yr	Mth	Milk	Fat	%F	Prot	%P	M	F	P	Comp	Owner		
1	BSCANF13928419	MAPLE BOOM HOHOHO			3	1	12334	547	4.4	441	3.6	322	355	329	1006	RIMANN'S MAPLE BOOM FARM, ON
2	BSCANF13733690	KENILCREST APEX BRITNEY	VG	87	3	2	11571	528	4.6	434	3.8	305	343	326	974	KENILCREST FARMS, ON
3	BSCANF45001030	GUBELMAN SILVER DORIS	VG	87	3	3	11394	546	4.8	432	3.8	287	339	311	937	GUBELMANN BROWN SWISS LTD., ON
4	BSCANF111575494	BROWN HEAVEN ELMSTAR FANCYGIRL-ET	VG	88	3	1	10264	558	5.4	364	3.5	275	370	278	923	FERME BROWN HEAVEN, QC
5	BSCANF45001049	GUBELMAN OLYMPIC DIANA	VG	85	3	2	11152	451	4	399	3.6	295	297	302	894	GUBELMANN BROWN SWISS LTD., ON
6	BSCANF120325120	SCHWEIZER AMIR BAMBI	VG	87	3	2	11202	500	4.5	402	3.6	284	314	291	889	FERME MELICKA 1997 INC., QC
7	BSCANF13784440	NOR BELLA FALK SKY	VG	85	3	3	11213	508	4.5	390	3.5	285	319	283	887	NOR BELLA ACRES INC., ON
8	BSCANF13928430	MAPLE BOOM HEMI			3	0	9922	463	4.7	385	3.9	268	309	296	873	RIMANN'S MAPLE BOOM FARM, ON
9	BSCANF45001059	GUBELMAN O MALLEY HOLLYWOOD	VG	86	3	1	9690	446	4.6	369	3.8	268	307	294	869	GUBELMANN BROWN SWISS LTD., ON
10	BSCANF120398515	PLEIN SOLEIL BSILVER ROXYE	VG	85	3	1	10546	427	4	362	3.4	286	286	283	855	FERME PLEIN SOLEIL (2010) INC, QC



10 Top Composite BCA Producers (November 2024 – March 2025)

Sr. 3 Yr Old				Class	Yr	Mth	Milk	Fat	%F	Prot	%P	M	F	P	Comp	Owner
1	BSCANF13673347	FOUR OAK HUGE THUMPER	VG	87	3	6	12269	526	4.3	405	3.3	331	359	314	1004	FOUR OAK FARMS, MB
2	BSCANF12635826	NOR BELLA SALOMON POSEY	VG	86	3	11	13910	553	4	459	3.3	338	335	319	992	NOR BELLA ACRES INC., ON
3	BSCANF13721111	MAPLE BOOM HOLLY			3	11	12461	522	4.2	434	3.5	313	327	313	953	RIMANN'S MAPLE BOOM FARM, ON
4	BSCANF45000997	GUBELMAN KINGSLEY DARBY	VG	88	3	10	12821	543	4.2	443	3.5	311	329	308	948	GUBELMANN BROWN SWISS LTD., ON
5	BSCANF12651489	EXCELSIOR STANDOUT MEDICINE	VG	88	3	11	13236	471	3.6	422	3.2	314	280	285	879	EXCELSIOR FARMS INC, ON
6	BSCANF45001028	GUBELMAN DEFENDER LUCKY	EX	90	3	9	11357	437	3.9	402	3.5	289	275	291	855	GUBELMANN BROWN SWISS LTD., ON
7	BSCANF45001001	GUBELMAN ANTONOV DORIE	VG	85	3	9	10860	507	4.7	396	3.6	265	309	277	851	GUBELMANN BROWN SWISS LTD., ON
8	BSCANF120084719	RONICK NOLIMITS PRISSEY	VG	86	3	9	10346	447	4.3	393	3.8	268	288	291	847	FERME RONICK INC., QC
9	BSCANF13684684	LONE PRAIRIE APEX KANDOO	GP	82	3	9	10483	500	4.8	415	4	253	299	286	838	RICHARD & ASHLEY VANDER KOOI, BC
10	BSCANF45001010	GUBELMAN KADE PENNY	VG	88	3	11	10455	475	4.5	370	3.5	264	300	269	833	GUBELMANN BROWN SWISS LTD., ON
4 Yr Old				Class	Yr	Mth	Milk	Fat	%F	Prot	%P	M	F	P	Comp	Owner
1	BSCANF13027699	FOUR OAK FACT UME	VG	86	4	8	14777	714	4.8	499	3.4	335	408	322	1065	FOUR OAK FARMS, MB
2	BSCANF13027710	FOUR OAK FACT TIGGER	VG	86	4	2	14750	620	4.2	501	3.4	348	367	339	1054	FOUR OAK FARMS, MB
3	BSCANF111575450	BROWN HEAVEN F & F SEA DALLY	EX	93	4	4	12620	624	4.9	449	3.6	315	388	321	1024	FERME BROWN HEAVEN, QC
4	BSCANF13594828	SPRING ROSE GENOXBOY PINEAPPLE	GP	81	4	0	12093	605	5	425	3.5	302	376	304	982	SPRINGROSE FARMS LTD, ON
5	BSCANF111618454	LITTLE HILL ALL-IN MIRACLE	GP	83	4	3	11729	579	4.9	395	3.4	296	365	286	947	FERME PLEIN SOLEIL (2010) INC, QC
6	BSCANF13235866	MAPLE BOOM PUCKRAT			4	11	12449	541	4.3	462	3.7	298	324	316	938	RIMANN'S MAPLE BOOM FARM, ON
7	BSCANF120133110	SCHWEIZER SEASIDEBLOOM BLUE	VG	86	4	4	13325	545	4.1	458	3.4	311	321	305	937	LA FERME HANS ENR., QC
8	BSCANF111575457	BROWN HEAVEN WF RAISINBRAN	EX	90	4	3	11443	545	4.8	414	3.6	287	339	296	922	FERME BROWN HEAVEN, QC
9	BSCANF13569938	MAPLE BOOM PUCKLO			4	2	13610	467	3.4	462	3.4	325	280	314	919	RIMANN'S MAPLE BOOM FARM, ON
10	BSCANF111575465	BROWN HEAVEN SALOMON TIDBIT	EX	92	4	9	12232	528	4.3	449	3.7	292	314	305	911	FERME BROWN HEAVEN, QC
10	BSCANF13526951	KEVIOTT ACRES APEX JENNY	GP	82	4	2	12918	503	3.9	455	3.5	306	298	307	911	KENILCREST FARMS, ON
5 Yr Old				Class	Yr	Mth	Milk	Fat	%F	Prot	%P	M	F	P	Comp	Owner
1	BSCANF45000917	GUBELMAN DYNAMITE HAZEL	EX	90	5	2	12872	610	4.7	522	4.1	292	345	339	976	GUBELMANN BROWN SWISS LTD., ON
2	BSCANF45000932	GUBELMAN PHIL DELILA	EX	90	5	0	12585	628	5	498	4	287	357	325	969	GUBELMANN BROWN SWISS LTD., ON
3	BSCANF13012492	KEVIOTT ACRES CADENCE FARRAH	G	76	5	2	14356	520	3.6	502	3.5	323	295	322	940	KENILCREST FARMS, ON
4	BSCANF12635813	NOR BELLA BIG STAR SLURPY	EX	93	5	5	13979	603	4.3	444	3.2	307	335	279	921	NOR BELLA ACRES INC., ON
5	BSCANF13012460	KEVIOTT ACRES BIVER ESTELE	VG	85	5	9	12835	543	4.2	461	3.6	295	310	303	908	KENILCREST FARMS, ON
6	BSCANF13027687	FOUR OAK TEQUILA ELLEN	VG	87	5	2	13170	565	4.3	447	3.4	296	321	287	904	FOUR OAK FARMS, MB
7	BSCANF13063167	MAPLE BOOM HACKIRY			5	8	11310	586	5.2	411	3.6	259	337	269	865	RIMANN'S MAPLE BOOM FARM, ON
8	BSCANF13012493	KEVIOTT ACRES DDEVIL FRANCIS	GP	82	5	0	12297	532	4.3	443	3.6	277	299	286	862	KENILCREST FARMS, ON
9	BSCANF13012463	KEVIOTT ACRES ALLSTAR ERIKA	VG	88	5	5	11333	556	4.9	402	3.5	264	325	266	855	KENILCREST FARMS, ON
10	BSCANF110802356	BALZANES FAIRY SEASIDEBLOOM	EX	90	5	11	12123	494	4.1	438	3.6	276	282	284	842	FERME GENO INC & KORALIE NAUD, QC
Mature Cow				Class	Yr	Mth	Milk	Fat	%F	Prot	%P	M	F	P	Comp	Owner
1	BSCANF110603248	BROWN HEAVEN BIG STAR CHARMIN	VG	87	6	2	11855	529	4.5	440	3.7	278	311	295	884	FERME BROWN HEAVEN, QC
2	BSCANF12299642	GUBELMAN BIVER DOMINIC	EX	94	7	7	12213	583	4.8	472	3.9	265	322	293	880	GUBELMANN BROWN SWISS LTD., ON
3	BSCANF109621984	BROWN HEAVEN T JEAVERISSA-ET	EX	91	7	11	12857	575	4.5	446	3.5	274	314	272	860	FERME BROWN HEAVEN, QC
4	BSUSAF68193676	LAIRDS TOTO JINGLE BELLE	VG	87	6	1	12495	530	4.2	430	3.4	274	294	270	838	TRINITY HOLSTEINS, BC
5	BSCANF110311825	RAMCO NOLIMITS JAVA	GP	82	6	6	12029	546	4.5	424	3.5	262	300	265	827	FERME RAMCO INC., QC
6	BSCANF45000891	GUBELMAN BIVER DRAGON	VG	88	6	1	11655	497	4.3	451	3.9	259	279	287	825	GUBELMANN BROWN SWISS LTD., ON
7	BSCANF12299658	GUBELMAN DOMINIC DAYDREAM	EX	92	7	3	11105	538	4.8	474	4.3	237	292	289	818	GUBELMANN BROWN SWISS LTD., ON
8	BSCANF110595308	LAPOKITA SEASIDEBLOOM PEACHE	VG	87	6	11	12284	476	3.9	441	3.6	267	263	274	804	FERME-ECOLE LA POKITA, QC
9	BSCANF109239824	MILEC TWILIGHT BRIOCHE	EX	90	7	10	11355	448	4	400	3.5	263	264	265	792	FERME MCF LECLERC INC., QC
10	BSCANF12821595	BATESDALE THUNDER ROMY	EX	90	6	5	11699	485	4.2	409	3.5	255	266	256	777	ROESBETT FARMS LTD, ON
Aged Cow				Class	Yr	Mth	Milk	Fat	%F	Prot	%P	M	F	P	Comp	Owner
1	BSCANF108311093	RAMCO ASTEROID PINTO	GP	83	10	8	11444	429	3.8	379	3.3	250	242	237	729	FERME RAMCO INC., QC
2	BSCANF11625312	GUBELMAN VIGOR PANDORA	GP	82	10	5	9151	395	4.3	331	3.6	203	226	209	638	LEONARD SPEARS & ERIC SPEARS, ON



Top LPI & Prospects (April 2025)

TOP 75% – (RANKINGS 1465 +)

BRITISH COLUMBIA

TOP GLPI		TOP GPA		TOP LPI - PROSPECT		TOP PA - PROSPECT	
TRADEMARK DYNATMIE JAZZY	1797	PRIORY KINGSLEY JANE 308	2018	LONE PRAIRIE APEX KANDOO	1889	LONE PRAIRIE OMALLEY MILLY	1996
BROOKFIELD APEX PLATINUM	1772	WISSELVIEW TIME OUT ROSIE	1708	LONE PRAIRIE KINGSLEY DARIA	1833	LONE PRAIRIE JONIO DARING	1990
		PRIORY DESIGN JOY 365	1632	LONE PRAIRIE FACT LEMONADE 2	1771	LONE PRAIRIE NATHAN DARLING	1977
		PRIORY KINGSLEY DANICA 321	1599	LONE PRAIRIE HUGE LILYSUE	1730	CREEKSIDE DEMO 2317	1938
				LONE PRAIRIE APEX DANICA	1712	CREEKSIDE DEMO 2325	1938
				LAIRDS KICKSTART ROSIE	1661	CREEKSIDE DEMO 2434	1938
				BROOKFIELD APEX JUNIPER	1614	CREEKSIDE DEMO 2501	1899
				LONE PRAIRIE JONMAR YASMINA	1613	CREEKSIDE DEMO 2426	1896
				LONE PRAIRIE CARRIER LOVELY	1588	EDUCATE-A-KID DARWIN BEE	1891
				LONE PRAIRIE FACT LADYBUG	1583	CREEKSIDE DEMO 2505	1882
				LONE PRAIRIE APPLE LUSH	1577	CREEKSIDE DEMO 2310	1880
				LONE PRAIRIE POWERBALL LUCILLE	1577	CREEKSIDE DEMO 2430	1877
				MOUNTAIN CARRIER NOVESKE	1541	CREEKSIDE DEMO 2435	1877
						CREEKSIDE DANNY 2504	1875
						CREEKSIDE DEMO 2306	1866
						CREEKSIDE DEMO 2309	1866
						CREEKSIDE DEMO 2311	1866
						CREEKSIDE DEMO 2314	1866
						CREEKSIDE DEMO 2318	1866
						CREEKSIDE DEMO 2324	1866
						CREEKSIDE DEMO 2328	1866
						CREEKSIDE DEMO 2429	1866

ALBERTA

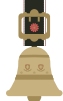
UNIQUE MALIBU	1583			EDEL JORDY DORIS 520	1695
DICKLANDS DAIRY KING DIAMOND-ET	1549			EDEL JORDYP 483	1682
				EDEL JORDY 534	1682
				STRADOW APEX UMBRELLA	1592
				EDEL JORDY DAFFADIL 499	1566

SASKATCHEWAN / MANITOBA

FOUR OAK APEX UTOPIA	2134	FOUR OAK JONIO TATERTOT	1954	CRISIDE CADENCE PIPER	1731	CRISIDE OMEGA COLA	2120
FOUR OAK ANTONOV UMIKO	1844			CRISIDE BIVER FROLIC	1726	FOUR OAK OMEGA THETA	2054
				FOUR OAK PASSAT VIVIAN	1687	CRISIDE OMEGA TWILL	2015
				CRISIDE BIVER CITRINE	1683	FOUR OAK HELIX VIPPI	1982
				FOUR OAK FACT TIGGER	1680	FOUR OAK HELIX ELANI	1948
				FOUR OAK BIVER TUNDRA	1652	FOUR OAK OMEGA WAGER	1948
				FOUR OAK CADENCE TOOTS	1640	FOUR OAK NATHAN ESTELLE	1933
				CRISIDE CADENCE WILLIE	1638	FOUR OAK JONIO TRINKET	1930
				FOUR OAK DYNAMITE TYSON	1635	FOUR OAK TANK VALLEY	1927
				FOUR OAK FACT KEENER	1635	FOUR OAK NATHAN TWEED	1922
				CRISIDE FACT PIC-A-POP	1619	FOUR OAK TANK TODDY	1914
				CRISIDE DYNAMITE HEARTTHROB	1617	FOUR OAK TANK TROMBONE	1898
				CRISIDE DYNAMITE MARATHON	1596	CRISIDE DESPERADO FLAMINCO	1889
				CRISIDE FACT CARA	1584	FOUR OAK TANK TWILIGHT	1888
				FOUR OAK HUGE THUMPER	1581	FOUR OAK BARROS VESPER	1883
				FOUR OAK FACT KAOS	1573	FOUR OAK PERFECTION KELLY	1855
				CRISIDE IRA FLUFFY	1573	FOUR OAK LOVER USCHI	1850
				FOUR OAK ANTONOVE DOBBY	1572	FOUR OAK JONIO TOK	1818
				FOUR OAK SILVER VINAY	1562	CRISIDE DESPERADO JOURNEY	1787
				FOUR OAK PASSAT TEGAN	1548	FOUR OAK VENOSTA TATIANA	1786

ONTARIO

GUBELMAN O MALLEY DEMOISELLE	2636	GUBELMAN VAESTERAS BLONDIE	2662	GUBELMAN O MALLEY ANASTASIA	2198	GUBELMAN PRINCE COCOA	2353
GUBELMAN O MALLEY KATRINA	2546	GUBELMAN CRAZY HORSE KAREN	2588	GUBELMAN O MALLEY DOUM	2148	EXCELSIOR DESPERADO GARTNER	2183
GUBELMAN BINIAM DEBRA	2346	GUBELMAN O MALLEY WILMA	2558	GUBELMAN SEASIDEBLOOM BEAUTY	1900	GUBELMAN PRINCE KANSAS	2175
GUBELMAN O MALLEY BRUNETTE	2321	GUBELMAN SAIGON HALLIE	2468	GARTNER ANDAMAN AMARETTO	1844	SPEARS DERRINGER ANNE	2149
GUBELMAN O MALLEY KIWI	2264	GUBELMAN BOXER HOPE P	2458	EXCELSIOR JONMAR GEOTEXTILE	1828	KENILCREST DESPERADO ONIX	2113
GUBELMAN O MALLEY HOLLYWOOD	2250	GUBELMAN BOXER KARMA P	2449	NOR BELLA TU SG EMMA	1812	MAPLE BOOM ALPSEE 1046	2103
GUBELMAN OLYMPIC DILANA	2205	GUBELMAN ANGEL DAFFY	2441	GARTNER ANDAMAN DIANA	1803	GUBELMAN DARWIN DALIA	2098
GUBELMAN OMALLEY HANNA	2202	GUBELMAN VAESTERAS DYNAMITE	2440	KENILCREST BANKIT ELVIRA	1789	KENILCREST DESPERADO MARY	2074
GUBELMAN O MALLEY PIPER	2138	GUBELMAN O MALLEY COCONUT	2432	GUBELMAN BIVER DALLAS	1767	MAPLE BOOM 1140	2055
GUBELMAN BIVER KATNISS-ET	2117	MAPLE BOOM 1079	2398	GUBELMAN CADENCE DISNEY	1739	MAPLE BOOM 1051	2055
GUBELMAN JORDY DELICIOUS	2117	GUBELMAN CRAZY HORSE BROOKE	2395	GUBELMAN CADENCE DARCY	1730	GARTNER BARROS DOROTA	2021
GUBELMAN OLYMPIC KIT KAT	2104	GUBELMAN VASTERAS KOOL AID	2371	GUBELMAN ANIBAL BRITTANY	1722	SIGEL PACTOLE PALMA	2018
GUBELMAN JONMAR WHITNEY	2092	GUBELMAN RASTAROKET DELINDA	2358	NOR BELLA FELINO PRU	1722	GUBELMAN NASHVILLE ABBY	2017
GUBELMAN VAVIGO KENTUCKY	2085	GUBELMAN BOXER DARLA P	2353	WILLOW WATERS DUSTY BIVER	1706	KENILCREST DESPERADO ANNA	1991
GUBELMAN O MALLEY BAILEY	2078	GUBELMAN BOXER KIRBY	2342	SIGEL CADENCE MELBA	1686	MAPLE BOOM 1139	1986
GUBELMAN VIPRO DILLY	2067	GUBELMAN SAIGON KAZOO	2342	NOR BELLA TU SG POLLISH	1678	NOR BELLA PERFECTION ELMA	1983
GUBELMAN PACTOLE MAPLE	2048	GUBELMAN JOEY BELLA	2339	KENILCREST APEX BRITNEY	1675	SPRING ROSE DOBOY BERETTA	1982
GUBELMAN KINGSLEY CARMEN	2014	MAPLE BOOM PUCK 1104	2329	KENILCREST CAN DUE TILLY	1667	MAPLE BOOM FIRESTAR 1041	1978
GUBELMAN SPEED CLARE	2012	GUBELMAN O MALLEY DEMI	2325	KENILCREST PACMAN SAMANTH	1661	GUBELMAN PRINCE DAMARA	1973
GUBELMAN CADENCE DAZZEL	2002	GUBELMAN VALLEJO DARKLE P	2322	KEVIOTT ACRES DDEVIL FRANCIS	1649	DERRY WAY CHELSEA'S SOPHIA	1965



Top LPI & Prospects (April 2024)

TOP 75% – (RANKINGS 1465 +)

QUEBEC							
TOP GLPI		TOP GPA		TOP LPI - PROSPECT		TOP PA - PROSPECT	
GUBELMAN O MALLEY CARRIE	2306	CHARLUSON TITOS FIONNA	2394	GRANMONT TANK SHELLEY	2073	SCHWEIZER CRAZY HORSE ELLY	2215
ISIDORE VASSLI KALINA	2164	CHARLUSON RASTAROKET BEACHES	2308	MILEC APEX BELGO-ET	2003	SHADY LANE SWISS D FARFARAWAY	2186
GUBELMAN O MALLEY HOP	2095	PREETMONT DERRINGE DAISY	2214	SCHWEIZER HUGE TWISTER	1997	SHADY LANE SWISS DES ASSASIN	2166
BROWN HEAVEN APPLE FRESH	2059	CHARLUSON RASTAROKET FLEURETTE	2179	PLEIN SOLEIL SEASIDE TEKILA	1982	MILEC DERRINGER BELLA	2147
SHADY LANE SWISS B ATTRACTIVE	2037	LIMA DIXIE DESPERADO	2169	GOULAISE SASCHA DIAGNOSTIC	1939	CHARLUSON OMÉGA ABBY	2137
LITTLE HILL HILTON LIKABLE	2032	BROWN HEAVEN PERFECTION FUNKIS	2096	GOULAISE JONMAR MOUSTIQUE	1931	MILKSHAKE DESPARADO HOLALA	2136
ISIDORE SASCHA KALINDA	2020	CHARLUSON RALICE RACHEL	2081	PLEIN SOLEIL SASCHA TWIXY	1930	MILEC DERRINGER BIDULE	2134
SHADY LANE SWISS H APLUS	2005	SHADY LANE SWISS PH AWESOMENES	2019	GRANMONT SASCHA LINA	1916	SCHWEIZER JOEY UNIC	2125
GUBELMAN O MALLEY HERBIE	2002	BROWN HEAVEN ALPIN FIONNA	1919	GOULAISE VASSLI DANIKA	1913	RIOUKIOUX JOEY FORTANEX	2119
SCHWEIZER ZAPATA OLGA	1985	BROWN HEAVEN DESIGN FREIDYS	1912	GRANMONT SEASIDEBLOOM SHELLA	1897	GOULAISE DERRINGER AMARETO	2114
BROWN HEAVEN BIVER FRENCHKISS	1982	CHARLUSON ZAPATA FARAH	1911	SCHWEIZER ZAPATA OLIVE	1888	LIEGEOISE TANK PERLE	2114
SCHWEIZER VASSLI CHERRY	1980	SHADY LANE SWISS DSPRADO IVANA	1897	GOULAISE POWERBALL DALIDA	1883	LIEGEOISE TANK DIESEL	2114
BELPRAI HUGE CLAUDINE	1976	SHADY LANE SWISS PH AINSLEY	1879	MILEC SSBLOOM ZAZ	1875	MILEC OMEGA ZAMBOOKA	2112
GUBELMAN O MALLEY DANA	1956	BROWN HEAVEN DESIGN FIORE	1876	SCHWEIZER ZAPATA EVANY	1860	SCHWEIZER JOEY OREO	2111
BROWN HEAVEN VASSLI FUNNY	1951	BOURK BINIAM HAILAYA	1868	HIRONDELLE KINGSLEY CHELSEA	1859	GRANMONT DERRINGER CAPRICE	2108
CHARLUSON BINIAM FABBY	1929	LIMA DELPHINE POWRHOUSE	1842	MILEC PACMAN BULLE	1859	GRANMONT TOP NOTCH SINNA	2103
HIRONDELLE APEX AGATHE-ET	1925	SHADY LANE SWISS DERR EXCEL	1839	GRANMONT DYNAMITE JACLYN	1855	CLAUDOR ELIZABETH	2103
BROWN HEAVEN HUGE FLUFFY	1924	DALUKA TITOS DARCY	1835	SYSLIC SYLVER CATHIE	1853	DUPONT DERRINGER TISZA	2099
BROWN HEAVEN VAS SWIRL DALLY	1922	SHADY LANE SWISS DERR EVERLY	1825	CHARLUSON SUPERSTAR SUNNY	1845	GRANMONT DESPERADO BALZANE	2097
BROWN HEAVEN HUGE FUN	1917	GUBELMAN BINIAM DURHAM	1824	MILEC HUGE BELSENORA	1833	MARTINOISE DESPERADO MARIANNA	2093
MARITIMES							
ELOC HUGE REWARD	2050	ELOC VASSRI EMEREE-ET	2374	CALIMBRA CHERRY	1752	JUST DUCKY SULLY BONNIE	1886
JUST DUCKY DREAMER BETTINA-ET	1792	ELOC VASSRI ERICA-ET	2057	MUSQIE DYNAMITE LUNA	1637	MOERAKI TANK RENEGADE	1755
JUST DUCKY TOBY BRAMBLE-ET	1585	ELOC BINIAM ROOK	2036	ELOC CADENCE RELIC	1635		
ELOC ZARISTO ROULETTE	1583	JUST DUCKY DESIGN BALSAM	1945	ELOC BIVER RETAKE	1630		
EASTCOAST SULTAN CLEO-ET	1571	VANO SULLY SWIFT (TV)	1887	JOLLY KINGSLEY DAYLILY	1559		
ELOC HUGE RENDEZVOUS	1571						
ELOC WINNINGFORMULA KLONDIKE	1537						

Classification Schedule

MAY

EARLY

ON –Peel, Halton, York, Dufferin, Simcoe, Ontario, Peterborough, Victoria, Durham

QC – Yamaska, Drummond, Bagot, St-Hyacinthe, Vercheres

SK – [MR]

MID

ON – [MR]: Middlesex, Elgin, Lambton

ON – Northumberland, Hastings, Prince Edward

QC – [MR]: Frontenac, Beauce

QC – Richelieu, Rouville

AB – [MR]

LATE

ON – Lennox & Addington, Frontenac

JUNE

EARLY

ON – [MR]: Oxford

ON – Waterloo, Timiskaming, Cochrane, Nipissing, Algoma

QC – [MR]: Levis, Dorchester, Bellechasse

QC – Abitibi, Temiscamingue, Labelle, Argenteuil, Papineau, Gatineau, Terrebonne, Deux-Montagnes

MID

ON – Wellington, Dundas

QC – L'Assomption, Montcalm, Joliette, Berthier, Maskinonge, St-Maurice, Champlain

LATE

ON – Stormont

QC – [MR]: Montmagny, L'Islet, Kamouraska

QC – Lavolette, Portneuf

Classifier Conference from May 26-30

This schedule is subject to change within a 1-2 week period

Top Bulls Available in Canada (April 2025)

To access their full bull profile visit: <http://www.brownswissquebec.com/taureaux>

LIFETIME PERFORMANCE INDEX

Semex	Hilltop Acres Rokat NITRO ET	2698
Holdstar	NATHAN	2666
Unigen	RASTAROKET	2615
Genex	Perry Brook LATITUDE ETV	2610
Holdstar	CHAGALL	2580

MILK (KG)

Holdstar	NATHAN	2062
Holdstar	CHAGAL	1715
Holdstar	CARAVAGGIO	1588
Holdstar	VOLKWEIN	1486
Semex	Gubelman B DIONYSUS P	1414

% FAT

ABS	Pine-Tree SVEM ETV	0.49
Semex	Hilltop Acres P PRINCE OCS ETV	0.35
Holdstar	Superbrown VENOSTA	0.34
Semex	Perry Brook Rasta R INTENT ETV	0.33
Semex	Hilltop Acres PC TITOS ETV	0.31
Unigen	O MALLEY	0.31
Holdstar	Superbrown SESVENNA	0.31

% PROTEIN

Unigen	O MALLEY	0.39
Semex	HF DARWIN ET	0.34
Semex	Abtop Mane SG SULLIVAN	0.33
Semex	Hilltop Acres Rokat NITRO ET	0.32
Semex	SG HT Biniam CAMILO ET	0.31

HERD LIFE

Semex	Hilltop Acres Rokat NITRO ET	115
Holdstar	Kiba David Vic DEMBE PP	114
Semex	Double W KADE P	113
Unigen	RASTAROKET	112
Semex	HALANO P	112
Semex	Sandmatthof BS Guy MAGNUM	112
Holdstar	CHAGALL	112
Holdstar	VALLEJO PP	112

SCC

Unigen	SATURNE	111
Unigen	TORONTO	111
Semex	Hilltop Acres Rokat NITRO ET	110
Unigen	TABEO	110
Semex	HALANO P	109
Semex	Kulp-Gen Pactole CHAMPAGNE ET	109
Semex	Hilltop Acres P TAMPA ETV	109
STgenetics	Meado-Brook SEGA Sabre	109
Genex	Perry Brook LATITUDE ETV	109
Semex	Hilltop Acres PC TITOS ETV	109
STgenetics	Kulp-Gen CAN DECIDE ET	109

DAUGHTER FERTILITY

Alta Genetic	Kulp-Gen AltaDOLLAR	108
Holdstar	Kiba David Vic DEMBE PP	108
Semex	HALANO P	107
Unigen	TOMY P	107
Holdstar	CARAVAGGIO	107

CONFORMATION

Semex	Hilltop Acres Rokat NITRO ET	18
STgenetics	La Rainbow Sweet O SULLY ET	17
Semex	Kulp-Terra Daryou CLIFF ET	16
STgenetics	La Rainbow Sweet SASUKE	16
Select	Apex C WALDORF ETV	16

MAMMARY SYSTEM

Semex	Hilltop Acres Rokat NITRO ET	18
STgenetics	La Rainbow Sweet SASUKE	17
Select	Apex C WALDORF ETV	17
Semex	Kulp-Terra Daryou CLIFF ET	15
Unigen	O MALLEY	15
Select	Hilltop Acres DESPERADO ETV	15
Semex	V B Collaps FULL THROTTLE	15
Holdstar	Superbrown JONIO	15
Semex	Hilltop Acres Design DARK HORSE	15

UDDER DEPTH

Semex	HALANO P	13 H
Select	Apex C WALDORF ETV	13 H
Semex	Hilltop Acres Rokat NITRO ET	12 H
Select	Hilltop Acres TRICKSTER ETV	12 H
Semex	Abtop Mane SG SULLIVAN	11 H

UDDER TEXTURE

Semex	V B Biver PHANTOM ET	8
Semex	Jenning Gap TIME OUT	6
Select	Apex C WALDORF ETV	5
STgenetics	La Rainbow Tank SPITFIRE	5
Select	Cozy Nook Doboy TANK	5
STgenetics	Brown Heaven R FAMOUS	5

MEDIAN SUSPENSORY

Semex	Switzer Tals Drdvl DOBOY ET	15
STgenetics	La Rainbow Sweet SASUKE	14
Holdstar	Superbrown JONIO	13
Holdstar	Superbrown SULEIMAN	11
STgenetics	La Rainbow Tank SPITFIRE	10
Semex	Hilltop Acres Design DARK HORSE	10
Semex	V B Collaps FULL THROTTLE	10
Select	Hilltop Acres DESPERADO ETV	10
Semex	Kulp-Terra Daryou CLIFF ET	10
Semex	HF DESIGN ET	10
Holdstar	Superbrown Kiba JOKERSTAR	10

FORE ATTACHMENT

Semex	Hilltop Acres Rokat NITRO ET	17
Semex	HALANO P	17
Semex	SG HT Biniam CAMILO ET	15
Unigen	O MALLEY	13
Select	Apex C WALDORF ETV	13
Unigen	RASTAROKET	13

REAR ATTACHMENT HEIGHT

Select	Apex C WALDORF ETV	18
Semex	V B Collaps FULL THROTTLE	13
Semex	Goldhill Pete CISCO	13
Semex	Kulp-Terra Daryou CLIFF ET	12
Holdstar	Bosa Versus Astro VELIERO	11
Semex	Jenning Gap TIME OUT	11
Semex	Switzer Tals Drdvl DOBOY ET	11
Select	Edge View C DETERMINATION ETV	11

REAR ATTACHMENT WIDTH

Semex	Goldhill Pete CISCO	17
Semex	Kulp-Terra Daryou CLIFF ET	17
STgenetics	La Rainbow Sweet SASUKE	17
Semex	Hilltop Acres N PLAYMAKER ET	15
Semex	Hilltop Acres Design DARK HORSE	14
Select	Hilltop Acres P NETFLIX ETV	14
Semex	Hilltop Acres PERFECTION ETV	14
Holdstar	Superbrown JONIO	14
Semex	SG HT Biniam CAMILO ET	14

FEET & LEGS

Holdstar	Kiba Bar Sup BARROS ET	15
Semex	Jenning Gap TIME OUT	14
Select	Hilltop Acres DESPERADO ETV	12
Unigen	O MALLEY	11
Holdstar	Superbrown JONIO	11
Semex	SG HT Biniam CAMILO ET	11
STgenetics	La Rainbow Sweet O SULLY ET	11
Semex	Abtop Mane SG SULLIVAN	11

DAIRY STRENGTH

Select	Hilltop Acres DESPERADO ETV	12
STgenetics	La Rainbow Sweet O SULLY ET	11
ABS	HF OCTAGON ET	11
Semex	HF DARWIN ET	11
Semex	HF DERRINGER ET	10
STgenetics	Brown Heaven R FAMOUS	10

RUMP

STgenetics	Cutting Edge SECRET WEAPON	12
Semex	V B Collaps FULL THROTTLE	11
Semex	Switzer Tals Drdvl DOBOY ET	11
Semex	Jenning Gap TIME OUT	11
Select	Cozy Nook Doboy TANK	11



CANADIAN
**Brown Swiss
& Braunvieh**
ASSOCIATION

THE BELL | SPRING-SUMMER 2025

Thank you Canadian Brown Swiss & Braunvieh members for your continued support to the breed. If you would like to have your farm profiled in our newsletter or if you have any pictures we can use for publications, send them to BrownSwiss@holstein.ca

WWW.BROWNCOW.CA