



CANADIAN
**Brown Swiss
& Braunvieh**
ASSOCIATION



Change of Registrar

4



Board of Directors Update

5



Genetic Defects Labeling

6

August 2015

Newsletter

At your convenience please visit us at our web-site: www.browncow.ca

New Lifetime Performance Index Replaces Lifetime Profit Index for Brown Swiss

Following a recommendation from the Brown Swiss Breed Improvement Committee, the Board of Directors agreed to the launch of the Lifetime Performance Index which will replace the Lifetime Profit Index. CDN has launched a new Pro\$ index for both the Holstein and Jersey breeds however for the other breeds, changes were made to the existing LPI formula. More information can be found within the newsletter.

Breed Bizz

Tattoo letter for 2015 is C

If you have cattle or embryos for sale please send a list to the office so interested parties requesting this information can be made aware.

Suggestions, comments, stories, jokes, articles that would be of interest in the newsletter are always welcome.

Rates for Placing a Newsletter Advertisement

Business Card Ad.	\$25.00
Quarter Page Ad.	\$65.00
Half Page Ad.	\$125.00
Pre-Approved Stuffers	\$250.00

Message From The President

Ladies and Gentlemen, Boys and Girls, Brown Swiss lovers of all ages,

Before I update you all on the goings on with our association and board, I would like to introduce myself. My name is Ken Drummond and as of the last Annual meeting I have been named President of our association. I have represented Quebec on the National board for many years and have served as Vice-president in the past. First recommended by Serge Bilodeau to represent Quebec, I was hesitant but have gained a great deal from the meetings I've attended and the people I have met all across our country.

I hail from the village of Shawville, on the western border of Quebec where I own Shady Lane Swiss Farms with my wife Shannon, our 2 children (Riley and Keira) and my parents Barrie and Diane. We milk 58 cows including some black and whites under the Just-For-Fun prefix. We farm 300 acres of corn, oats, wheat and this year never ending hay.

I enjoy long walks on the beach, quiet nights under the stars... well not really... more realistically those long walks under the stars include chasing heifers that are loose.

Seriously folks I am a passionate breeder of the Brown Swiss cow. I believe she has the ability to rise above the other breeds in profitability, ease of management and of course personality and cuteness!

Though our association is small we have a great deal going on these days. Our biggest project for this year is switching to Holstein Canada as our registrar. This



is to begin in January, and yes it is

on track and it is very exciting. With this switch we will simplify the registration process, allow us access to new programs such as Master breeder Award, Star Brood Cow and stream line billing.

Recently we reviewed the results of a survey regarding the "Royal". After considering the feedback we made the difficult decision to not have a show this year. We were unable to meet the numbers required by the Royal staff. We are not closing the door to a show in the future. As a result of this decision we felt it was necessary to name an alternate National show. For 2015 it will be the "Supreme Laitier" (www.supremelaitier.com) in Ste-Hyacinthe which takes place November 3-7 with the Brown Swiss show on November 5.

The 2016 Annual meeting will be hosted by Ontario this spring. Please mark your calendars and plan on attending this event. If it isn't the interesting farm tours, spectacular fun auction or the socializing with other breeders that attracts you, then use it as an opportunity to tell us what is working well and what we need to do better for you as an association. On behalf of the Canadian Brown Swiss & Braunvieh Association, please speak up! We welcome all ideas and opinions on how to promote our breed and grow our association!

Ken Drummond

Board of Directors



President

Ken Drummond

C-232 Front Rd.
Shawville, QC, J0X 2Y0
Phone: 819-647-5699
shady_lane_swiss@hotmail.com

Vice-President

Ernst Gubelmann

42931 Hullett-McKillop Rd.
Walton, ON, N0K 1Z0
Phone & Fax: 519-527-2396
gubelmann@tcc.on.ca

Dan Bates

11955 County Rd 10
RR 1
Stayner, ON, L0M 1S0
Phone: 705-428-2464
batesdale@hotmail.ca

Chantal Leclerc

2801 Rue Notre-Dame Est
Trois Rivières, QC, G8V 1Y8
Phone: 819-374-6159
leclercchantal@hotmail.com

Armin Dueck

31139 Road 27 East
Kleefield, MB, R0A 0V0
Phone: 204-377-4766
Fax: 204-377-9076
fouroakfarms@mts.net

Ian Peden

RR 1
Leduc, AB, T9E 2X1
Phone: 780-986-1726
Fax: 780-986-3069
swisstraditionby@yahoo.ca

Committees and Representatives

CLRC – Ken Drummond and Jessie Weir

RAWF – Mark McConnell, Bruce Mason, and Jessie Weir

CDN – Ernst Gubelmann, Daniel Bates, Ken Drummond and Jessie Weir

Canadian Dairy Breeds – Ken Drummond, Ernst Gubelmann, and Jessie Weir

Quebec Show – Chantal Leclerc

Ontario Show – Dan Bates

Breed Improvement Committee – Ken Drummond (Chairman), Rejean Mathys, Troy McConnell, Mark McConnell, Dave Rousseau and Serge Bilodeau

Amendments – Ken Drummond, Ian Peden, Armin Dueck, Registrar and Jessie Weir

Breed Improvement Update



The Breed Improvement Committee held a conference call on Friday, August 14. A number of topics were discussed. Below are the recommendations from the conference call which will be forwarded to the Board of Directors:

Recommendation to the Board – amendment to the constitution to have it mandatory to genetically identify all bulls before they are registered.

Recommendation to the Board – to set a production goal for the breed.

Recommendation to the Board - to change the All Canadian regulations to an animal must show in at least one show in Canada..

The Board of Directors will discuss and make a decision on the above recommendations from the Breed Improvement Committee.

Classification Schedule

August - October 2015



Early August

ON - mid round: Victoria & Durham
QC - Matapedia, Bonaventure, Matane
QC - mid round: Laprairie, Napierville, St. Jean, Iberville

Mid August

ON - Perth
ON - mid round: Wellington, Thunder Bay, Northern Ontario
QC - Arthabaska
QC - mid round: Vaudreuil, Soulanges, Huntingdon, Chateauguay, Beauharnois, Shefford, Richmond, Missisquoi, Compton, Brome

Saskatchewan - Mid Round

Late August

ON - mid round: Stormont, Glengarry
QC - Megantic

Early September

ON - mid round: Dundas, Prescott, Brant, Haldimand & Norfolk, Niagara, Wentworth
QC - Wolfe, Lotbiniere, Nicolet
QC - mid round: Sherbrooke, Stanstead

Mid September

QC - Drummond
BC - Lower & Central Fraser Valley, Richmond, Delta, Upper Fraser Valley, Okanagan, Vancouver Island

Late September

ON - Leeds, Grenville, Renfrew, Lanark, Huron
QC - Pontiac, Yamaska

Early October

ON - Grey, Bruce, Halton York
QC - St. Hyacinthe, Bagot, Rouville, Richelieu, Vercheres, Abitibi, Temiscamingue, Terrebonne, Duex Montagnes, Labelle, Joliette
QC - mid round: Frontenac, Beauce, Levis. Quebec, Montmorency, Dorchester, Bellechasse

Mid October

ON - Dufferin
ON - mid round: Carleton, Russell
QC - Papineau & Gatineau, Argenteuil, Montcalm, Berthier

Late October

ON - Peel, Simcoe, Ontario
QC - L'Assomption, St. Maurice, Maskinonge

Change of Registrar



Holstein Canada

Beginning January 2016, the association Registrar will change from CLRC to Multi Breed Services with Holstein Canada. Continue to forward your registry work to CLRC until year end.

In December, watch for an information package which will contain everything our members will need to make the smooth transition to Holstein Canada as our Registrar.

National Brown Swiss Show

Thursday, November 5, 2015
8:00 a.m., Judge Rejean Leclerc
St. Hyacinthe, Quebec (on the site of the St. Hyacinthe Agricultural Fair)

Purina will be supplying 1 large bale of straw / 10 head and 1 shaving / head.

The Annual General Meeting

Will be hosted by the Ontario club in Spring of 2016. More details to follow.



Royal Winter Fair Brown Swiss Show

Due to low entry number there was not a Brown Swiss show at the Royal Winter Fair last year. At a Royal Dairy Cattle Committee meeting there was a suggestion to send a survey to the exhibitors to determine the participation level for the 2015 Royal Brown Swiss show. There were 25 surveys sent to former Royal Brown Swiss show exhibitors and 16 completed surveys were received. The majority of the exhibitors wished to support the Royal and continue to have our national show in Toronto. The majority of our exhibitors are well aware of the tremendous exposure and world-wide interest, and would hate to not have the national show at the Royal. For the ones not wishing to participate they indicated their reasons were either not enough time, money, young family or too far to travel. The exhibitors were asked how many animals they would anticipate showing. Unfortunately the low number of anticipated entries would make it very difficult to meet the minimum number of 60 animals. This left a very hard decision for the Brown Swiss Board of Directors.

The decision of the Canadian Brown Swiss and Braunvieh Association Board of Directors is to not have a Royal Brown Swiss Show for this year as there is not enough support from the exhibitors. The Board wishes to keep the option open of having our national show at the Royal in the future.

All Canadian Contest – Regulations Updated

After much discussion regarding the All Canadian Contest, the Board decided to change the rules of the contest in order to allow for increased participation. For 2015, the eligibility rules will change to Canadian animals shown at local shows or national show or shows in the United States or US animals shown in Canada. All participants must have a Canadian membership.

National Brown Swiss Show to be held at Supreme Dairy Show for 2015

Numerous options and locations for the national show were discussed. In order to facilitate a national show for 2015 the decision was made for this year

to accept the Supreme Dairy Show as the national Brown Swiss show. The location of the 2016 national show will be discussed at the AGM in spring of 2016. The Board wishes to encourage participation at the national Brown Swiss show to be held at the Supreme Dairy Show, St. Hyacinthe, Quebec on November 5 with Rejean Leclerc judging. For further details please access: <http://www.supremelaitier.com/>.

Once again thank you to our valued exhibitors and sponsors for your support of the national show in the past and looking forward to the opportunities ahead.

Genetics Defects Labeling



The Canadian Brown Swiss and Braunvieh Board of Directors motioned to accept the new labelling system for genetic defects as proposed by the European Brown Swiss Federation. CDN and CLRC are currently working on the change to the new system.

Below is information provided by Olivier Bulot from the World Brown Swiss Federation.

In the future, the declaration and publication will be differentiated for genetic defects and genetic characteristics. On a website or even on documents one can publish the information on genetic defects as shown below: Carrier of or Free of. Genetic characteristics can be published in a comprehensive way:

Genetic Defects & Characteristics		Info
Carrier of:	BH2	
Free of:	M, D	
Genetic Characteristics:	Kappa-Kasein AB	

The new declaration/publication will be performed over a three-letter code. The first two letters identify the genetic defect. The last letter defines the status of the genetic defect:

- C = Carrier (heterozygous carrier)
- F = Free (homozygous free)
- D = Dead / Disease / Double gene (homozygous Carrier)

The D-letter has no importance for the practical breeding, because homozygous affected animals are in the normal case not viable. However the storage of this information is necessary for scientific reasons.

There are important changes:

- Genetic defects are no longer displayed by name (neither in the short nor long name)
- Carrier animals have to be declared on important documents (pedigrees, bull catalogues, sale lists, top lists with bulls, etc.).

The previously used elements * and () can be omitted

Official Genetic Defect	Status	Old System	New System
Arachnomelia	Carrier	(A) or (A*)	ARC
	Not carrier	*TA or TA	ARF
SMA	Carrier	(M) or (M*)	SMC
	Not carrier	(*TM) or (TM)	SMF
SDM	Carrier	(D) or (D*)	SDC
	Not carrier	(*TD) or (TD)	SDF
Weaver	Carrier	(*W) or (W)	WEC

	Not carrier	(*TW) or (TW)	WEF
BH2	Carrier	BH2	B2C
	Not carrier	No declaration	B2F

Here also is the new form of publication for polled animals:

Polled	Status	Old	New
Self-Reporting	Polled	P	POR (polled reported)
Gene test	Heterozygous polled	Pp*	POC (polled carrier)
	Homozygous polled	PP*	POS (true polled)
	Homozygous horned	pp*	POF (polled free)

We propose that this new labelling system should be discussed within the international Brown Swiss community, with the goal to achieve a uniformed solution worldwide.

International Database For Genetic Defects

As the information about genetic defects will no longer be part of the full name, the European Brown Swiss Federation is currently working on an advancement of the existing international database for genetic defects, hosted by Braunvieh Schweiz. The aim will be to guarantee even in the future the international exchange of information about genetic defects of individual animals. As far as the changes are made by Braunvieh Schweiz, we will inform you again about this issue in the future. *Olivier Bulot*

Cows, Culture & Cuisine V!

Back by popular demand, we will be organizing the 5th installment of Cows, Culture and Cuisine from roughly April 1 to 13. This trip will include the World Brown Swiss Conference in France. Plans are still being made, but will include a visit to Paris with mandatory tourism, numerous farm visits in both France and Switzerland, a visit to a champagne vintner, and of course excellent French and Swiss cuisine!

Interested parties should contact us with an email address to receive additional details and up-dates.



Spaces are somewhat limited, and are available on a first come, first served basis.

Contact:

Dan Gilbert - dan@brownswiss.com



Ultra-Exciting Opportunity for Brown Swissgenetic Advancement



For over a decade Semex has had a terrific working partnership with Swissgenetics.

Swissgenetics is a global leader in identifying superb young sires for progeny sampling, quickly and widely distributing semen on these bulls and then selectively returning only the very best bulls to active service once proven. Semex's collaboration with Swiss Genetics is a true goldmine of opportunity for Canadian Brown Swiss owners!

It is now time to make orders for the next shipment of Swissgenetics product coming to Canada. Demand was very strong after the April proofs. The story has only become better and brighter with release of August official genetic evaluations!

Elsewhere in this newsletter issue is a detailed description of the array of assets available from Swiss Genetics. On the overall list you'll find three

sires over +2000 GLPI, two top young sires with sexed semen available; all seventeen bulls rank at +7 or higher for type with 12 of them at +10 or higher! 11 sires are represented by sons among the 17 bulls and there are 14 different maternal grandsires for the bulls!

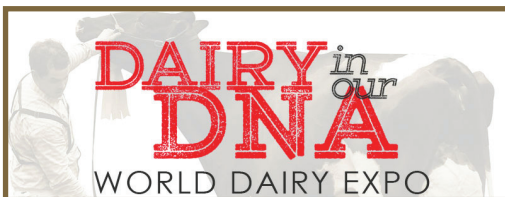
Eleven of the bulls are daughter proven with six being young genomic sires.

Never before have Brown Swiss owners had a golden opportunity to select from amongst a terrific group of proven and genomic young sires! This elite grouping of bulls offers vast genetic diversity, high production potential, sky high type excellence and absolutely stunning health and fitness traits!

Order deadline is September 8, 2015. Contact your local AI unit for further information.

CIAQ 1-800-563-5603, EastGen 1-800-267-9222, ext 339, WestGen 1-800-563-5603

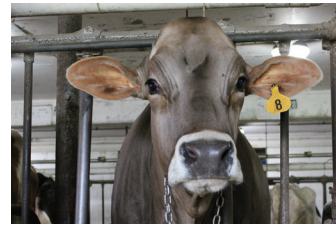
Your time is now!
Russell Gammon



2015 World Dairy Expo Brown Swiss Show & Sale Schedule

Wednesday, September 30	
2:00 pm	International Brown Swiss Show - Heifers (C)
Thursday, October 1	
7:30 am	International Brown Swiss Show - Cows & Groups (C)
2:00 pm	World Premier Brown Swiss Sale (SP)
Saturday, October 3	
5:00 pm	Parade of Champions & Selection of 2015 Supreme Champions (C)

Press Release: New Generation Genetics



Proven Line-up

54BS482 CARTER has created quite a stir as he combines extreme production with high type. In fact, he is now the #1 bull for type and is now over the elite level of 1000 pounds of milk. He also assended to the top 10 for udder composite, improving to +1.08.

54BS438 BROOKINGS added 50% more daughters and improved nicely for production reflecting their very persistant production and improvement over time. He also improved his udder composite.

54BS493 VITALIS added reliability and reaffirmed his elite status for transmitting compents and now ranks #1 on the list of Active bulls for fat and protein %, and #2 for pounds of fat.

No report would be complete without mentioning **54BS374 Vigor**, who enters the top 10 list for

daughters in the Interbull list! He also added to his already breed leading Productive Life.

Genomic Recap

54BS544 DARIO remains one of the very elite genomic bulls available. He has the rare combination of high milk, protein AND very high DPR and Productive Life.

54BS543 DANE is Dario's Cadence brother and also ranks near the top as well.

54BS539 RICHARD is still the #1 genomic bull for both type and udder composite. His first daughters are replecting his elite type status!

54BS526 DAVENPORT is an early Carter with extreme DPR and is 3rd for Udder Composite.



Association Clothing Available

Please contact the office if you wish to purchase Association clothing. What a great way to promote the breed!

- Golf Shirts - \$40.00
- Long Sleeve Dress Shirts - \$40.00
- Jackets - \$40.00
- Caps - \$12.00

CONTACT US:

Canadian Brown Swiss & Braunvieh Association

7660 Mill Rd
Guelph, ON, N1H 6J1
Phone: 519-821-2811
Fax: 519-763-6582



2015 Excellents (January - August 2015)



BSUSAF958708	SILVER TOP DY CHARLOTTE	EX	94	2E	FERME BROWN HEAVEN	QC
BSCANF103028952	FRAGANCES CARTOON IZA	EX	93	5E	FERME FRAGANCES ENR	QC
BSCANF7962476	BATESDALE DANIEL ROXY	EX	93	3E	BATESDALE FARMS	ON
BSCANF9695511	GUBELMAN SPECIAL DANISH	EX	93	2E	GUBELMANN BROWN SWISS LTD.	ON
BSCANF10883139	NOR BELLA SCIPIO REMI	EX	93	2E	NOR BELLA ACRES INC.	ON
BSCANF104346302	GOULAISE WURL TRIOLI	EX	92	4E	FERME GOULAISE INC.	QC
BSCANF8987975	CRISIDE HEARTBREAKER	EX	92	3E	CRISIDE FARMS	MB
BSCANF104277880	ISIDORE BRINKS KALINDA	EX	92	3E	FERME LEHMANN	QC
BSCANF105175666	BROWN HEAVEN GRIFFIN TOOTIE	EX	92	2E	FERME BROWN HEAVEN	QC
BSCANF104878900	GOULAISE SCIPIO UGOLINE	EX	92	2E	FERME GOULAISE INC.	QC
BSCANF105187225	RENCIE AGIO SUISY	EX	92	2E	FERME RENCIE INC.	QC
BSCANF105175662	BROWN HEAVEN DANIEL SEXY DALLY	EX	92	2E	FERME BROWN HEAVEN	QC
BSCANF7912909	DUN ROVIN ACRES LEGACY JUDITH	EX	92	2E	GEOFFREY MCCONNELL	ON
BSCANF104911595	SABONO VIGOR LILA	EX	92	1E	FERME SABONO	QC
BSCANF10883148	NOR BELLA TD ELLIS	EX	92	1E	NOR BELLA ACRES INC.	ON
BSCANF106773279	FRAGANCES SHEBANG CHAKIRA	EX	92	1E	FERME FRAGANCES ENR	QC
BSCANF11014175	GUBELMAN ALIBABA DOMINIC	EX	92	1E	GUBELMANN BROWN SWISS LTD.	ON
BSCANF105158025	PAUFERLOU ZEUS URIELE	EX	91	3E	PAUFERLOU INC	QC
BSCANF8987940	CRISIDE SILKIE	EX	91	3E	CRISIDE FARMS	MB
BSCANF106031610	SEROL DEVONTE GRACE	EX	91	2E	FERME SEROL SENC	QC
BSCANF10883141	NOR BELLA CHAMPION DYLAN	EX	91	2E	NOR BELLA ACRES INC.	ON
BSCANF10883139	NOR BELLA SCIPIO REMI	EX	91	2E	NOR BELLA ACRES INC.	ON
BSCANF106146611	MILEC AGIO MARTHA	EX	91	1E	FERME MCF LECLERC INC.	QC
BSCANF11014170	GUBELMAN ALIBABA WHISPER	EX	91	1E	GUBELMANN BROWN SWISS LTD.	ON
BSCANF10883141	NOR BELLA CHAMPION DYLAN	EX	91	1E	NOR BELLA ACRES INC.	ON
BSCANF10883148	NOR BELLA TD ELLIS	EX	91	1E	NOR BELLA ACRES INC.	ON
BSCANF9907791	CRISIDE AGENDA MARILYN	EX	91	1E	CRISIDE FARMS	MB
BSCANF9348430	ULOOK PENTACLE KAYLIN	EX	90	5E	BRIAN BRODIE	ON
BSCANF7801501	NORTHEND ROOTER'S GAY	EX	90	5E	BAJEMA	AB
BSCANF7962475	MAPLE VISTA GOLDMINE PIXIE	EX	90	4E	BATESDALE FARMS	ON
BSCANF103966508	HIRONDELLE POWER SURGE JUDY	EX	90	4E	FERME HIRONDELLE SAINTE-HÉLÈNE INC.	QC
BSCANF8987982	NOR BELLA BLAZER PRESLEY	EX	90	4E	NOR BELLA ACRES INC.	ON
BSCANF102392045	MOROCCO CHRIS OPALE	EX	90	4E	FERME SABONO	QC
BSCANF8937302	PRINZEN CARTOON REBECCA ET	EX	90	3E	PHILIP & DAVID PRINZEN	ON
BSCANF9695459	GUBELMAN PAYOFF WALDI	EX	90	3E	GUBELMANN BROWN SWISS LTD.	ON
BSUSAF956105	BROWNS DEDRAS DUTCHESS	EX	90	3E	BRADNER R FARMS LTD	BC
BSCANF106157085	BROWN HEAVEN BUTTERSCOTCH	EX	90	2E	FERME BROWN HEAVEN	QC
BSCANF7677890	CRISIDE AMMIE	EX	90	2E	CRISIDE FARMS	MB
BSCANF9726210	PRINSVILLE DECKER CLOVER	EX	90	2E	PRINSVILLE DAIRY FARMS INC.	ON
BSCANF7771584	EXCELSIOR BANKER MARVEL ET	EX	90	2E	JOHN G & LOUISE DEELSTRA	ON
BSCANF105554156	BRUNABEC TANIA BOREAL	EX	90	2E	FERME BLYVIAN INC.	QC
BSCANF9549494	SPRING ROSE EVEN SHANIA	EX	90	2E	STEPHEN HENHOEFFER	ON
BSCANF9695518	GUBELMAN VIGOR DANIELLE	EX	90	2E	GUBELMANN BROWN SWISS LTD.	ON
BSUSAF68102386	TOP ACRES EXPRESS TAHITI ET	EX	90	2E	BRADNER FARMS	BC
BSCANF104431138	RENCIE CHEVRON PICRON	EX	90	2E	FERME RENCIE INC.	QC
BSCANF8987966	CRISIDE KOLA	EX	90	2E	CRISIDE FARMS	MB
BSCANF9695515	GUBELMAN TD MOCCA	EX	90	2E	GUBELMANN BROWN SWISS LTD.	ON

BSCANF9682260	HAPPY COW TORNADO WILLY	EX	90	1E	CORNELIS VERHOEF	AB
BSCANF11202378	CARLETON JAYCEE	EX	90	1E	LEAH RICHARDSON-DEAN	ON
BSCANF10925923	DUN ROVIN SUPREME BUTTERSCOTCH	EX	90	1E	DUN ROVIN ACRES LTD	ON
BSCANF106157102	BROWN HEAVEN J BUTTERFLY	EX	90	1E	FERME BROWN HEAVEN	QC
BSCANF11050814	CLEARCREST ABSOLUTE BLACKIE	EX	90	1E	HAROLD & MARSHA JELINSKI	ON
BSCANF7934234	BRADNER ASIA CARTOON	EX	90	1E	BRADNER FARMS	BC
BSCANF11138640	BATESDALE DANIEL MACEY	EX	90	1E	BATESDALE FARMS	ON
BSCANF9597092	ANFIELD JET PILOT ELECTRA ET	EX	90	1E	MARKUS MUELLER	QC
BSCANF107010648	GOULAISE JONGLEUR LIMOCHE	EX	90	1E	FERME GOULAISE INC.	QC
BSCANF9549501	SPRING ROSE AGENDA JULIE	EX	90	1E	STEPHEN HENHOEFFER	ON
BSCANF8987974	CRISIDE FASTBREAK TRULOVE	EX	90	1E	CRISIDE FARMS	MB
BSCANF8987951	CRISIDE TURMOIL MACARINA	EX	90	1E	CRISIDE FARMS	MB
BSCANF105590180	MAPLEEDGE VALDO EARLIE 2	EX	90	1E	JEANNOT & LISE DESHARNAIS	QC
BSCANF104911569	SABONO AGENDA MYRTHIL	EX	90	1E	FERME SABONO	QC
BSCANF9809605	DUN ROVIN BRILLIANT PEARL	EX	90	1E	DUN ROVIN ACRES LTD	ON
BSCANF105158037	PAUFERLOU POET WILLOW	EX	90	1E	PAUFERLOU INC	QC

2015 Very Good Two Year Olds (January - August 2015)

BSCANF11625268	GUBELMAN PROHUVO DIME	VG2	88		GUBELMANN BROWN SWISS LTD.	ON
BSCANF107882241	MILEC WONDERMENT GINA	VG2	87		FERME MCF LECLERC INC.	QC
BSCANF11014243	GUBELMAN BROOKINGS DOLLY ET	VG2	87		GUBELMANN BROWN SWISS LTD.	ON
BSCANF11014259	GUBELMAN DALLY DOLLAR	VG2	87		GUBELMANN BROWN SWISS LTD.	ON
BSCANF11592770	NOR BELLA PAUL RAINDROP	VG2	87		NOR BELLA ACRES INC.	ON
BSCANF107363019	BROWN HEAVEN MANCHEST FRECKLE	VG2	87		FERME BROWN HEAVEN	QC
BSCANF107363031	BROWN HEAVEN THUNDER BETSY	VG2	87		FERME BROWN HEAVEN	QC
BSCANF107363027	BROWN HEAVEN LEGACY JEWEL ET	VG2	87		FERME BROWN HEAVEN	QC
BSCANF11470396	BATESDALE VIGOR NOËL	VG2	87		BATESDALE FARMS	ON
BSCANF107363027	BROWN HEAVEN LEGACY JEWEL ET	VG2	86		FERME BROWN HEAVEN	QC
BSUSAF68147664	CUTTING EDGE JET FIONNA ET	VG2	86		FERME BROWN HEAVEN & SWISS DREAM FARM	QC
BSCANF11625268	GUBELMAN PROHUVO DIME	VG2	86		GUBELMANN BROWN SWISS LTD.	ON
BSCANF107363031	BROWN HEAVEN THUNDER BETSY	VG2	86		FERME BROWN HEAVEN	QC
BSCANF107363022	BROWN HEAVEN ZEUS LOLLY POP	VG2	86		FERME BROWN HEAVEN	QC
BSCANF11616853	ELOC BROOKINGS RASCAL	VG2	86		A. DEAN COLE	NS
BSCANF11437162	DUN ROVIN SUNDOWN BEAUTY	VG2	86		DUN ROVIN ACRES LTD	ON
BSCANF11592761	NOR BELLA SUPREME PALMER ET	VG2	86		NOR BELLA ACRES INC.	ON
BSCANF11592766	NOR BELLA PS SANJULA	VG2	86		NOR BELLA ACRES INC.	ON
BSCANF107938435	ANFIELD THUNDER RAISIN	VG2	86		BROWN HEAVEN & MARKUS MUELLER	QC
BSCANF107791169	RENCIE AMARETTO WISTALO	VG2	86		FERME RENCIE INC.	QC
BSCANF11625300	GUBELMAN JUHUS ALICIA	VG2	86		GUBELMANN BROWN SWISS LTD.	ON
BSCANF11522523	BRADNER BROOKINGS PEPERMINT ET	VG2	86		BRADNER R FARMS LTD	BC
BSCANF107363018	BROWN HEAVEN LEGACY JOLLY ET	VG2	86		FERME LAROSCO INC.	QC
BSCANF11700671	CLEARCREST VIGOR DEBRA	VG2	86		HAROLD & MARSHA JELINSKI	ON
BSCANF11625269	GUBELMAN BROOKINGS KATIE	VG2	86		GUBELMANN BROWN SWISS LTD.	ON
BSCANF107791168	RENCIE CAFINO SEXTO	VG2	86		RENALD DUMAS	QC
BSCANF107094456	SABONO AMARETTO KARLA	VG2	86		FERME SABONO	QC
BSCANF107549718	HIRONDELLE GOLDMINE PACHA	VG2	86		FERME HIRONDELLE SAINTE-HÉLÈNE INC.	QC
BSCANF107882241	MILEC WONDERMENT GINA	VG2	86		FERME MCF LECLERC INC.	QC
BSCANF107363023	BROWN HEAVEN VISION BLITZ ET	VG2	86		FERME BROWN HEAVEN	QC
BSCANF108009713	BARONETS AMARETTO ETZEL	VG2	85		LÉONARD CHABOT	QC

BSCANF107882245	MILEC BROOKINGS BARBIE	VG2	85	FERME MCF LECLERC INC.	QC
BSCANF107882250	CASTEL DYNASTY LEONA ET	VG2	85	FERME MCF LECLERC INC.	QC
BSCANF11522527	BRADNER RIDE'N THE RIVER ET	VG2	85	BRADNER FARMS	BC
BSCANF11522516	BRADNER BROOKINGS PIXPOCKET ET	VG2	85	BRADNER FARMS	BC
BSCANF107108626	SCHWEIZER JOEL OLGA	VG2	85	LA FERME HANS ENR.	QC
BSCANF108004019	GOULAISE VIGOR RADY ET	VG2	85	FERME GOULAISE INC.	QC
BSCANF107993619	BRITANNIA JONES MENDA	VG2	85	FERME BRITANNIA SENC	QC
BSCANF11282420	SIGEL DALLY CIARA	VG2	85	MICHAEL & CORDULA INAUEN	ON
BSCANF11282426	SIGEL CAFINO MUKI	VG2	85	MICHAEL & CORDULA INAUEN	ON
BSCANF107559396	DESCHÉNOISE MANCHESTER PERLE	VG2	85	KATHERINE DESCHÉNES	QC
BSCANF11511250	PRINSVILLE ASTEROID COMET	VG2	85	PRINSVILLE DAIRY FARMS INC.	ON
BSCANF11242017	FOUR OAK WONDER ECLAIR	VG2	85	FOUR OAK FARMS	MB
BSCANF107965579	JOLIDAI CAFINO NIBA	VG2	85	JEANNOT & LISE DESHARNAIS	QC
BSCANF107950335	HINSY AMARETTO COCKTAIL	VG2	85	SYLVAIN HINSE	QC
BSCANF107114219	VIBERT DRAGON SEVENUP	VG2	85	VICKY PLANTE	QC
BSCANF11604168	SWISSLANE VIGOR KEZIA	VG2	85	SWISSLANE FARMS	ON
BSCANF11470402	BATESDALE THUNDER MARY JANE	VG2	85	BATESDALE FARMS	ON
BSCANF11470393	BATESDALE GALAXY HALO	VG2	85	BATESDALE FARMS	ON
BSCANF107119743	PICHET AMARETTO LADY GAGA	VG2	85	FERME F.X. PICHET INC.	QC
BSCANF11700679	CLEARCREST PROMOTION RENATE	VG2	85	HAROLD & MARSHA JELINSKI	ON
BSCANF11460467	SWISS KINE WURL MASSINA	VG2	85	CLARENCE DOERKSEN	MB
BSCANF107363041	BROWN HEAVEN MANDEL DELICIOUS	VG2	85	FERME BROWN HEAVEN	QC
BSCANF107363025	BROWN HEAVEN LEBRON LUCKY GIRL	VG2	85	FERME BROWN HEAVEN	QC
BSCANF11437163	DUN ROVIN SUNDOWN BROOKLYN	VG2	85	DUN ROVIN ACRES LTD	ON
BSCANF11437168	DUN ROVIN BROOKINGS LATTE	VG2	85	BAILEY & ASHLEY MCCONNELL	ON
BSCANF11437158	DUN ROVIN SUNDOWN CIERRA	VG2	85	BAILEY & ASHLEY MCCONNELL	ON
BSCANF107686359	ANSE AU PERSIL ZIVA GRANDSLAM	VG2	85	NICOLAS CARON	QC
BSCANF107910434	NOTERRA BROOKINGS TOURMALINE	VG2	85	ÉLISE SAWYER	QC
BSCANF11592767	NOR BELLA JETWAY SAPPHIRE	VG2	85	NOR BELLA ACRES INC.	ON
BSCANF11592771	NOR BELLA PAUL DEP	VG2	85	NOR BELLA ACRES INC.	ON
BSCANF11592765	NOR BELLA PAUL SAREE	VG2	85	NOR BELLA ACRES INC.	ON
BSCANF11592764	NOR BELLA GALAXY SHAN	VG2	85	NOR BELLA ACRES INC.	ON
BSCANF11592768	NOR BELLA PAUL RAINBOW	VG2	85	NOR BELLA ACRES INC.	ON
BSCANF11592774	NOR BELLA JONGLEUR PAZAZZ ET	VG2	85	NOR BELLA ACRES INC.	ON
BSCANF108051660	VERONAMOUR BELLA FERRARI	VG2	85	LES ÉLEVAGES CÉLESTAR INC.	QC
BSCANF11625298	GUBELMAN BROOKINGS DENVER	VG2	85	GUBELMANN BROWN SWISS LTD.	ON
BSCANF11014257	GUBELMAN DALLY ALEXIA	VG2	85	GUBELMANN BROWN SWISS LTD.	ON
BSCANF11625279	GUBELMAN BROOKINGS DELIGHT	VG2	85	GUBELMANN BROWN SWISS LTD.	ON
BSCANF11625267	GUBELMAN DALLY BESSY	VG2	85	GUBELMANN BROWN SWISS LTD.	ON
BSUSAF68149234	V B HP WON MARVELOUS ET	VG2	85	CASEY MOREY & MIKE HELLENBRAND	AB
BSCANF107938416	ANFIELD RAVEN MONICA JANE	VG2	85	MARKUS MUELLER & SWISS DREAM FARM	QC
BSCANF11175577	EASTWIND VIGOR DELIA	VG2	85	SARA LOOS	ON
BSCANF11389465	SOUTHBRAE GOLDMINE ANGEL	VG2	85	FERME JOLIDAI ET FERME CHAMCY INC.	QC

Production Records (January - August 2015) Ranked by Composite Milk, Fat, Protein

Yearlings				GP				GP			Milk	Fat	%F	Prot	%P	Milk	Fat	Prot	Comp	
1	BSCANF11050863	CLEARCREST SCIPIO CHOCOLATE	75	GP	81	1	11	10199	400	3.9	361	3.5	333	317	337	987				
2	BSCANF11014246	GUBELMAN DALY DILANA	PB	VG	85	1	10	9382	427	4.5	358	3.8	307	342	335	984				
3	BSCANF11533366	KOOPYCREST BROOKINGS MARIEKE	PB	GP	80	1	11	9787	424	4.3	333	3.4	317	337	308	962				
4	BSCANF11625268	GUBELMAN PROHUVO DIME	PB	VG	88	1	9	8739	389	4.5	340	3.9	296	319	330	945				
5	BSCANF107010691	GOULAISE WAGOR AQUA	PB	GP	80	1	10	9541	452	4.7	336	3.5	294	340	295	929				
6	BSCANF11014247	GUBELMAN DALY DALLAS	PB	VG	85	1	11	9035	378	4.2	328	3.6	295	300	307	902				
7	BSCANF11014259	GUBELMAN DALY DOLLAR	PB	VG	87	1	10	8335	384	4.6	322	3.9	277	312	307	896				
8	BSCANF11028629	EXCELSIOR AMARETTO RASPBERRY	PB	GP	83	1	11	8895	391	4.4	321	3.6	288	310	297	895				
Jr. 2 Yr Old																				
1	BSCANF11014237	GUBELMAN BROOKINGS CLAIRE	PB	VG	86	2	0	11125	437	3.9	371	3.3	351	339	334	1024				
2	BSCANF11014236	GUBELMAN MAC DARBY	PB	VG	86	2	1	9875	413	4.2	329	3.3	311	318	296	925				
3	BSCANF11014241	GUBELMAN VIGOR LILY	PB	GP	81	2	0	10128	367	3.6	334	3.3	325	287	306	918				
4	BSCANF11175558	EASTWIND CAFINO JULIE	PB	GP	82	2	1	10138	387	3.8	324	3.2	320	298	292	910				
5	BSCANF11592757	NOR BELLA PAUL EVE	PB	VG	88	2	0	8724	417	4.8	322	3.7	278	326	293	897				
6	BSCANF11083803	TOP SWISS JULENG JULENA	PB	G	78	2	2	10262	426	4.2	359	3.5	296	302	297	895				
7	BSCANF11437145	DUN ROVIN REGGIANO PRECIIOUS	PB	GP	84	2	1	9779	402	4.1	337	3.5	298	302	293	893				
8	BSCANF11014234	GUBELMAN VIGOR DEVINE	PB	VG	85	2	0	9280	414	4.5	320	3.5	289	316	286	891				
9	BSCANF11397700	MAPLE BOOM EUROPA	75		2	3	9696	402	4.2	322	3.3	292	298	278	868					
10	BSCANF107310036	MILEC WONDERMENT CAPUCINE ET	PB	VG	85	2	2	9147	391	4.3	324	3.5	284	296	287	867				
Sr. 2 Yr Old																				
1	BSCANF11014218	GUBELMAN VIGOR VIPER	PB	VG	86	2	10	11816	453	3.8	387	3.3	331	312	310	953				
2	BSCANF11083801	TOP SWISS HURAY HILDA	PB	G	78	2	11	10789	475	4.4	386	3.6	302	330	309	941				
3	BSCANF11014209	GUBELMAN DALY MORGAN	PB	VG	88	2	11	11069	414	3.7	390	3.5	306	282	310	898				
4	BSCANF11253377	ELISCHWAND PARRY YAK	75		2	6	10132	420	4.2	358	3.5	288	296	291	875					
5	BSCANF11014215	GUBELMAN PROHUVO DEBBIE	PB	VG	85	2	11	9685	427	4.4	380	3.9	271	297	304	872				
6	BSCANF11050838	CLEARCREST ABSOLUTE ANGELA	87	GP	81	2	11	9613	416	4.3	378	3.9	269	289	302	860				
7	BSCANF11253067	WILLOW WATERS ADDISON MAC	PB	GP	83	2	6	9287	435	4.7	345	3.7	264	306	280	850				
8	BSCANF107010674	GOULAISE VIGOR PICOTTE ET	PB	VG	85	2	10	8482	455	5.4	337	4.0	239	316	272	827				
9	BSCANF11354383	SWISSLANE WONDERMENT DONANN	87	GP	82	2	6	9105	395	4.3	329	3.6	267	284	276	827				
10	BSCANF106157105	BROWN HEAVEN JET CHICK'S	PB	VG	86	2	9	9605	415	4.3	356	3.7	263	282	278	823				
Jr. 3 Yr Old																				
1	BSCANF11014192	GUBELMAN VASIR DOREEN	PB	VG	87	3	5	13054	507	3.9	429	3.3	337	325	318	980				
2	BSCANF10925948	DUN ROVIN TRACTION ZEBRA	PB	GP	80	3	2	11868	486	4.1	425	3.6	313	316	320	949				
3	BSCANF106482366	ANFIELD TD DAYTIME	PB	GP	83	3	1	11032	549	5.0	400	3.6	288	356	299	943				
4	BSCANF106277063	PAUFERLOU GLENN SENIA ET	PB	GP	83	3	1	10515	521	5.0	382	3.6	285	350	296	931				
5	BSCANF106277066	PAUFERLOU GOLDMINE YABA	PB	GP	80	3	0	10485	483	4.6	383	3.6	291	333	304	928				
6	BSCANF11175948	SWISSLANE ALIBABA KELLY	93		3	4	11892	485	4.1	394	3.4	310	313	294	917					
7	BSCANF11014219	GUBELMAN DALY ANGELICA	PB	VG	85	3	0	10863	451	4.2	388	3.6	301	307	308	916				
8	BSCANF106157102	BROWN HEAVEN J BUTTERFLY	PB	EX	90	3	0	11143	492	4.4	383	3.4	296	326	290	912				
9	BSCANF11236808	SPRING ROSE SIMBA BAILEY	PB	GP	82	3	1	10814	473	4.4	368	3.4	293	317	285	895				
10	BSCANF11084576	MAPLE BOOM JOLI	87		3	4	10046	490	4.9	388	3.9	265	320	292	877					
Sr. 3 Yr Old																				
1	BSCANF11014185	GUBELMAN JUHUS DEILA	PB	VG	87	3	7	14134	667	4.7	524	3.7	360	422	380	1162				
2	BSCANF106277049	PAUFERLOU AGENDA SCOTTIA	PB	VG	86	3	10	12151	717	5.9	437	3.6	303	445	312	1060				
3	BSCANF11014188	GUBELMAN TAU LAINEY	PB	VG	88	3	6	12589	536	4.3	424	3.4	323	341	309	973				

Production Records (January - August 2015) Ranked by Composite Milk, Fat, Protein

4	BSCANF11014172	GUBELMAN DASHER DEVA	PB	VG	86	3	10	12483	557	4.5	446	3.6	305	340	312	957	ERNST GUBELMANN	ON
5	BSCANF11177629	ROBIN NEST CARTOON BLITZ	PB	GP	81	3	6	11464	518	4.5	418	3.6	303	339	314	956	OSCAR BOWMAN	ON
6	BSCANF11175944	SWISSLANE ALIBABA MEA	93	GP	83	3	7	11779	493	4.2	390	3.3	304	316	287	907	SWISSLANE FARMS	ON
7	BSCANF11175947	SWISSLANE WURL LOT	87		3	6	11228	469	4.2	391	3.5	294	305	292	891	SWISSLANE FARMS	ON	
8	BSCANF10881498	MAPLE BOOM EMAUSI	87		3	10	11833	538	4.5	408	3.5	282	322	278	882	RI-MANN'S MAPLE BOOM FARM	ON	
9	BSCANF11014190	GUBELMAN JUHUS DELUXE	PB	VG	87	3	7	10185	479	4.7	400	3.9	264	309	296	869	GUBELMANN BROWN SWISS LTD.	ON
10	BSCANF10925918	DUN ROVIN SUPREME GRACIE	PB	GP	83	3	9	11391	469	4.1	406	3.6	286	293	290	869	DUN ROVIN ACRES LTD	ON
4Yr Old																		
1	BSCANF106277052	DAYRY SWISS JONGLEUR PEKA	PB	VG	87	4	0	13418	594	4.4	481	3.6	341	376	349	1066	DAVE, DANY & YVAN ROUSSEAU	QC
2	BSCANF9695511	GUBELMAN SPECIAL DANISH	PB	EX	93	4	7	15007	623	4.2	525	3.5	347	362	345	1054	GUBELMANN BROWN SWISS LTD.	ON
3	BSCANF10925912	DUN ROVIN WONDERMENT LAUNA	PB	VG	88	4	0	12329	586	4.8	434	3.5	310	366	312	988	DUN ROVIN ACRES LTD	ON
4	BSCANF9695498	GUBELMAN DEREK LOLA	PB	VG	88	4	10	13381	560	4.2	503	3.8	305	322	327	954	GUBELMANN BROWN SWISS LTD.	ON
5	BSCANF105618783	MILEC POWER BELLA ET	PB	VG	88	4	10	13256	530	4.0	440	3.3	319	319	303	941	FERME MCF LECLERC INC.	QC
6	BSCANF106580524	SEROL DASHER CASSILIA	PB	GP	82	4	2	12013	482	4.0	433	3.6	302	301	312	915	FERME SEROL SENC	QC
7	BSCANF9899027	ROBIN NEST VIGOR DEDELL	PB	VG	88	4	5	12437	556	4.5	423	3.4	293	327	284	904	OSCAR BOWMAN	ON
8	BSCANF9950473	EASTWIND TD DIANE	PB	VG	85	4	0	13668	491	3.6	430	3.1	324	289	291	904	HEIDI & WALTER VON AH	ON
9	BSCANF10820707	MAPLE BOOM DERECKIA	75		4	7	12784	467	3.6	496	3.9	297	268	328	893	RI-MANN'S MAPLE BOOM FARM	ON	
10	BSCANF10957047	SWISSLANE SCIPIO UTAH II	87	VG	85	4	7	11565	518	4.5	409	3.5	285	318	288	891	SWISSLANE FARMS	ON
5Yr Old																		
1	BSCANF9779232	SWISSLANE SCIPIO MIIA	75	EX	92	5	7	16562	621	3.8	550	3.3	383	361	364	1108	SWISSLANE FARMS	ON
2	BSCANF9695453	GUBELMAN VIGOR DONNA	PB	VG	88	5	7	14062	618	4.4	492	3.5	325	355	324	1004	GUBELMANN BROWN SWISS LTD.	ON
3	BSCANF9695491	GUBELMAN AGENDA JANE 2	PB	EX	90	5	3	12739	562	4.4	460	3.6	289	321	299	909	GUBELMANN BROWN SWISS LTD.	ON
4	BSCANF9809630	DUN ROVIN MARAUDER BLUEBERRY	PB	F	68	5	4	12023	551	4.6	437	3.6	285	328	295	908	DUN ROVIN ACRES LTD	ON
5	BSCANF9702431	TOP SWISS HUSIR HANNA	PB	VG	87	5	8	11999	502	4.2	423	3.5	277	290	278	845	HANS SIGNER	ON
6	BSCANF7771587	EXCELSIOR URANUS PRIDE	PB	VG	87	5	9	12608	481	3.8	433	3.4	281	267	276	824	JOHN G & LOUISE DEELSTRA	ON
7	BSCANF104911623	SABONO PRUNKI WHY NOT	75	VG	85	5	2	11745	561	4.8	386	3.3	260	315	244	819	FERME CARBONNEAU	QC
8	BSCANF105175654	CASTEL FASTBREAK CHIPITS	PB	EX	91	5	1	11352	484	4.3	421	3.7	256	275	272	803	FERME BROWN HEAVEN	QC
9	BSCANF7860556	GLEN LILAC AGIO LUCKY	PB		5	3	11210	473	4.2	406	3.6	254	266	262	782	STEPHEN M HIGGS	BC	
10	BSUSAF68105129	FITZS AGENDA REGINA	PB	VG	85	5	9	11157	434	3.9	396	3.5	257	251	261	769	FERME CHARLUSON INC	QC
Mature Cow																		
1	BSCANF7855573	GUBELMAN DRAFT DEANA	PB	EX	90	6	10	16422	701	4.3	561	3.4	357	383	348	1088	GUBELMANN BROWN SWISS LTD.	ON
2	BSUSAF947892	NUTMEG ACRES JETWAY TIDBIT	PB	EX	92	8	8	13645	605	4.4	484	3.5	318	360	323	1001	FERME BROWN HEAVEN	QC
3	BSCANF104477178	DAYRY SWISS ZEUS US LUCKY	PB	EX	93	6	3	13978	622	4.5	505	3.6	316	353	326	995	FERME BROWN HEAVEN	QC
4	BSCANF7818389	BROWNSTAR JOLT MOLCCA	PB	EX	90	7	8	14543	604	4.2	442	3.0	329	345	285	959	MARCO PFISTER	ON
5	BSCANF102753994	CASTEL PRESTIGE CLARA	93	EX	91	8	6	12144	538	4.4	431	3.5	283	318	287	888	FERME MCF LECLERC INC.	QC
6	BSCANF103301754	DAYRY SWISS DYNASTY LIBERTY	PB	EX	90	8	2	13199	536	4.1	455	3.5	287	298	283	868	FERME BROWN HEAVEN	QC
7	BSCANF103722892	PAUFERLOU ALLIANCE SONIA	93	G	77	8	0	11753	613	5.2	424	3.6	256	341	263	860	PAUFERLOU INC	QC
8	BSCANF9555149	ROBIN NEST SCIPIO KONE	PB	EX	91	6	4	12573	554	4.4	420	3.3	278	311	266	855	OSCAR BOWMAN	ON
9	BSCANF7962475	MAPLE VISTA GOLDMINE PIXIE	PB	EX	90	6	5	12152	468	3.9	427	3.5	284	275	285	844	BATESDALE FARMS	ON
10	BSCANF9549539	BIG SPRING CARTOON HOPE	87	VG	85	6	0	11772	496	4.2	379	3.2	277	294	254	825	STEPHEN HENHOEFFER	ON
Aged Cow																		
1	BSCANF8295438	LOR PAT PREVIEW TRUDANCE	PB		13	2	8665	388	4.5	306	3.5	214	249	215	678	678	HENDRIKUS ZOMER	SK
2	BSCANF8860482	EXCELSIOR CARTOON PONY	PB	VG	85	10	0	9695	423	4.4	320	3.3	222	247	209	678	JOHN G & LOUISE DEELSTRA	ON
3	BSCANF8824022	CRISIDE LINEN	PB	EX	90	10	3	9179	380	4.1	315	3.4	203	217	199	619	CRISIDE FARMS	MB
4	BSCANF101490883	ISIDORE TRADEMARK ALBI	PB	GP	83	11	4	8513	326	3.8	284	3.3	207	204	197	608	FERME LEHMANN	QC
5	BSCANF8646311	CRISIDE TRUDAWN	PB	EX	93	13	6	6595	266	4.0	212	3.2	153	161	140	454	CRISIDE FARMS	MB

Taureaux Brown Swiss Bulls

Newly Proven Bulls by LPI		Top 5 LPI Bulls		Bulls with Biggest LPI Change		Sires of Top 25 LPI Bulls (Average LPI)		
Nouvellement Éprouvés selon IPV		5 Meilleurs selon l'IPV		Taureaux avec changement d'IPV important		Pères des 25 Meilleurs (Moyenne d'IPV)		
1 BROOKINGS	PAYOFF	1673	1 BROOKINGS	DANIEL	+184	1266	PRESIDENT	8% 1576
11 MANCHESTER	WONDERMENT	1452	2 ALTARANSOM	PROHUVO	-133	1191	ZEUS	8% 1576
62 DILLINGER	PREMIUM	964	3 MILLENIUM	MOTOWN	+129	1520	PAYOFF	8% 1466
80 JITSUE	TD	865	4 GLENN	ZEUS	+119	1580	VIGOR	8% 1358
			5 ALIBABA	LESTER	-117	1280	DENMARK	8% 1348
				SAM	-104	1127		
Milk / Lait (kg)		Fat / Gras (kg)		Protein / Protéine (kg)		Conformation		
1 ALTARANSOM	+ 1298	1 POET	+ 40	1 WAGOR	- 34	1 SUPREME	1 SUPREME	- 14
2 JAMARR	+ 885	2 WAGOR	+ 37	2 POET	+ 33	2 GLENN	2 GLENN	+ 13
3 WONDERMENT	+ 734	2 LESTER	0 37	3 PAYOFF	0 31	3 JONGLEUR	3 JONGLEUR	0 12
4 PAYOFF	+ 712	4 DALLAS	- 32	4 ALTARANSOM	+ 29	4 BROOKINGS	4 BROOKINGS	N 10
5 PROPHET	+ 707	5 TD	+ 31	5 DASHER	+ 27	4 AGENDA	4 AGENDA	0 10
		5 CAFINO	+ 31	5 BEAMER	- 27	4 SHEBANG	4 SHEBANG	0 10
				5 POLLYDEN	0 27	4 WONDERMENT	4 WONDERMENT	0 10
						4 TURMOIL	4 TURMOIL	- 10
						4 STARBUCK	4 STARBUCK	0 10

Genotyped Brown Swiss Cows/Vaches Suisse Brune Génotypées

Top 5 GLPI Cows		Sires of Top 400 GLPI Cows		Dams of Top 400 GLPI Cows		New Top GLPI Cows		
5 Meilleures Vaches selon l'IPVG		Pères des 400 Meilleures selon l'IPVG		Mères des 400 Meilleures selon l'IPVG		Meilleures Nouvelles Vaches selon l'IPVG		
1 GUBELMAN JUHUS CRYSTAL	+ 2096	WONDERMENT	3.50% 1010	PAUFERLOU WURL STORA	7	12 DESCHÉNOISE ALIBABA BLUES	1614	
2 GUBELMAN BROOKINGS CLAIRE	+ 1894	BROOKINGS	3.00% 1314	MILEC ZEUS BEAUTY ET	5	16 SHADY LANE SWISS MITWN A-ONE ET	1598	
3 GUBELMAN JUHUS DAZZEL	- 1882	GLENN	2.25% 1535	ELM PARK COGNAC 'N' AMARETO	5	17 MILEC BROOKINGS BARBIE	1597	
4 PAUFERLOU GLENN SALSA ET	+ 1751	VIGOR	1.75% 1188	SHADY LANE SWISS DOM ALLERO ET	4	20 CLEARCREST ALIBABA ABBY	1540	
5 PAUFERLOU ZEUS URILEE	+ 1729	WURL	1.75% 1091	CASTEL PRESTIGE CLARA	4	23 SOUTHBRAE GOLDMINE ANGEL	1500	
Milk / Lait (kg)		Fat / Gras (kg)		Protein / Protéine (kg)		Conformation		
1 SIMMABEC RANSOM BANNIÈRE	+ 1479	1 GUBELMAN JUHUS CRYSTAL	0 63	1 GUBELMAN JUHUS DAZZEL	- 52	1 BROWN HEAVEN GLENN FANTASY	+ 16	
2 GUBELMAN JUHUS DAZZEL	- 1006	2 PAUFERLOU TD SELMA	+ 55	2 GUBELMAN JUHUS CRYSTAL	0 51	1 SHADY LANE SWISS SUP ALLRIGHT	0 16	
3 PAUFERLOU TD SELMA	- 929	3 PAUFERLOU WURL STORA	+ 47	3 GUBELMAN DASHER MADAME	+ 40	3 PAUFERLOU GLENN SALSA ET	0 15	
4 PAUFERLOU ZEUS URILEE	- 859	4 GUBELMAN JUHUS DAZZEL	- 46	4 SIMMABEC RANSOM BANNIÈRE	+ 35	3 PAUFERLOU GLENN SILLA ET	+ 15	
5 PAUFERLOU TD WANDA	- 839	4 REYLA POET SAHARA	+ 46	5 REYLA POET SAHARA	- 31	3 PAUFERLOU GLENN SENIA ET	0 15	
				5 PAUFERLOU LESTER YANIA	+ 31	3 PAUFERLOU JONGLEUR SLOVA	N 15	
						7 SWISS DREAM AGENDA FAITH ET	0 14	
						7 SHADY LANE SWISS ALTHOUGH ET	0 14	
						7 BROWN HEAVEN J BUTTERFLY	0 14	
						7 ANFIELD WALDI JANE	0 14	

CANADIAN DAIRY NETWORK (CDN) RESEAU LAITIER CANADIEN

AUGUST 2015 AOUT

TOP LPI BULL REPORT / RAPPORT DES MEILLEURS TAUREAUX SELON L'IPV

BREED/RACE: BROWN SWISS

RANK	LPI	RK	TC	A.I.	CODE	NUMBER	GENOMIC	GENOMIQUE	NAME	HERDS	DAUS	TDR	REL	MILK	RK	FAT	RK	PROT	RC	FAT	%	PROT	%	PERS	SCS	CONF	RK	HL	DF			
																														IPV	RC	CT
1	1673	99	D	054BS00438	198772		R N R	PAYOFF	BROOKINGS ET *TM	39	90	432	87	447	87	19	84	23	92	0.00	0.06	100	2.78	10	97	MS/SM	6	106	106	MSP/VT	98	
							G	Lactation 1				407	88	431	18	25				-0.01	0.08	100	2.86			FL/PM	9			MT/TT	100	
							G	Lactation 2				25	84	369	15	20				0.00	0.07	101	2.88			DS/PL	4			CA/AV	109	
							G	Lactation 3				0	83	405	17	22				0.00	0.07	101	2.63			UD/PP	4S			DCA/AFV	110	
2	1633	99	I	011BS00603	39421		BLESSING	PROPHET	RANSOM	27	53	964	87	1298	99	26	87	29	97	-0.32	-0.21	102	3.07	-1	42	MS/SM	0	114	104	MSP/VT	105	
							G	Lactation 1				412	86	1308	29	31				-0.29	-0.20	103	2.90			FL/PM	11			MT/TT	93	
							G	Lactation 2				292	86	1339	31	35				-0.27	-0.18	101	3.03			DS/PL	-4			CA/AV	104	
							G	Lactation 3				260	85	1294	24	28				-0.32	-0.21	101	3.28			UD/PP	2D			DCA/AFV	105	
3	1632	99	D	200BS00002	199360		OLSON	MILLENIUM	ET	30	47	750	86	527	89	25	84	26	92	0.03	0.05	98	2.92	1	58	MS/SM	7	109	102	MSP/VT	106	
							G	Lactation 1				324	85	748	38	35				0.06	0.06	99	2.98			FL/PM	-1			MT/TT	97	
							G	Lactation 2				279	85	641	30	29				0.05	0.05	96	2.98			DS/PL	-4			CA/AV	104	
							G	Lactation 3				147	84	340	13	18				-0.01	0.06	99	2.88			UD/PP	5S			DCA/AFV	109	
4	1625	97	D	196BS13322	120023664460		SCHAMAUN	BS	GORDON	GLENN	ET	17	30	481	89	223	72	27	89	0.21	0.20	86	3.16	13	99	MS/SM	8	103	105	MSP/VT	101	
							G	Lactation 1				236	81	135	27	24				0.23	0.20	88	3.14			FL/PM	4			MT/TT	99	
							G	Lactation 2				157	80	101	26	18				0.28	0.16	84	3.09			DS/PL	11			CA/AV	94	
							G	Lactation 3				88	78	221	25	21				0.19	0.14	86	3.00			UD/PP	2S			DCA/AFV	105	
5	1591	97	I	196BS13193	120033040506		SCHARZ	BS	PRESID	ALIBABA	*TM	38	87	997	90	143	64	15	79	0.12	0.20	110	2.84	1	58	MS/SM	2	110	104	MSP/VT	107	
							G	Lactation 1				591	90	9	9	19				0.10	0.20	109	2.94			FL/PM	1			MT/TT	107	
							G	Lactation 2				327	90	17	8	18				0.10	0.19	111	2.68			DS/PL	-5			CA/AV	98	
							G	Lactation 3				79	88	187	17	25				0.11	0.20	110	2.84			UD/PP	3S			DCA/AFV	106	
6	1580	97	I	196BS10295	110121201483		PETERS	TOP	ZOLDO	ZEUS	41	76	1204	93	396	84	18	82	20	84	0.01	0.06	95	2.79	1	58	MS/SM	5	107	107	MSP/VT	106
							G	Lactation 1				509	92	442	21	20				0.01	0.03	96	2.84			FL/PM	-4			MT/TT	98	
							G	Lactation 2				388	91	401	19	21				0.04	0.06	95	2.75			DS/PL	-7			CA/AV	107	
							G	Lactation 3				307	91	154	5	11				-0.02	0.06	94	2.76			UD/PP	2S			DCA/AFV	110	
7	1561	97	I	054BS00374	195618		SUN-MADE	VIGOR	ET	82	270	3300	96	173	69	-1	59	11	67	-0.11	0.05	105	2.65	7	91	MS/SM	9	113	104	MSP/VT	103	
							G	Lactation 1				1766	97	173	-5	9				-0.14	0.02	102	2.77			FL/PM	7			MT/TT	105	
							G	Lactation 2				1020	96	36	-8	6				-0.12	0.05	105	2.69			DS/PL	1			CA/AV	98	
							G	Lactation 3				514	96	88	-6	8				-0.12	0.05	109	2.49			UD/PP	4S			DCA/AFV	99	
8	1522	94	I	014BS00288	193627		TRIANGLE	ACRES	PO	PAYOFF	ET	32	73	1109	92	712	99	16	79	0.01	0.06	95	2.90	2	63	MS/SM	2	99	107	MSP/VT	104	
							G	Lactation 1				502	91	859	22	38				-0.17	0.04	97	2.97			FL/PM	6			MT/TT	96	
							G	Lactation 2				359	91	545	7	23				-0.18	0.03	94	3.07			DS/PL	0			CA/AV	103	
							G	Lactation 3				248	90	642	14	29				-0.14	0.05	98	2.65			UD/PP	2S			DCA/AFV	108	
9	1520	94	I	007BS00818	199070		OLSONS	MEL	ZEUS	MOTOWN	ET	12	33	398	81	77	54	22	84	0.23	0.04	96	2.80	4	77	MS/SM	6	108	106	MSP/VT	105	
							G	Lactation 1				216	80	52	21	5				0.20	0.03	96	2.99			FL/PM	4			MT/TT	101	
							G	Lactation 2				107	78	-9	20	4				0.26	0.05	96	2.89			DS/PL	0			CA/AV	104	
							G	Lactation 3				75	77	-54	16	2				0.22	0.04	97	2.59			UD/PP	3S			DCA/AFV	109	
10	1497	94	D	200BS00410	104235621		TRIANGLE	ACRES	POET	ET	29	42	629	83	327	79	40	99	33	99	0.31	0.22	100	3.01	-3	28	MS/SM	1	98	107	MSP/VT	100
							G	Lactation 1				271	83	542	38	52				0.30	0.17	99	2.87			FL/PM	-3			MT/TT	97	
							G	Lactation 2				196	82	113	33	29				0.36	0.28	104	2.97			DS/PL	0			CA/AV	95	
							G	Lactation 3				162	81	77	32	24				0.36	0.23	97	3.01			UD/PP	1D			DCA/AFV	101	

CANADIAN DAIRY NETWORK (CDN) RESEAU LAITIER CANADIEN

BREED/RACE: BROWN SWISS
 100 MEILLEURS TAUREAUX A L'ETRANGER SELON L'IPVM (CONFORME AU MINIMUM DE LA FIABILITE)
 TOP 100 FOREIGN BULLS BY MLPI (MEETING MINIMUM RELIABILITIES)
 AUGUST/AOUT 2015

MLPI IPVM	CNTRY PAYS	GENOMIC GENOMIQUE	NUMBER NUMERO	NAME NOM	BIRTH NAISS	SEMEN CODE INT'L	CONT FILLES	DAUS HERDS	REL FIAB	MILK LAIT	FAT GRAS	PROT PROT	FAT% %GRAS	PROT% %PROT	REL FIAB	CONF CONF	MS SM	FL PL	DS PL	SCS CCS	HL DV	
2328	DEA	G	DEU814660364	VASSILI	2010	0504BS00052	0504	136	91	74	1673	82	59	0.13	-0.02	66	2	3	2	5	2.76	108
2288	DEA	G	DEU935830301	HURAY	2002	0504BS00052	0504	19612	7098	91	1633	62	62	-0.07	0.04	88	1	0	5	1	2.90	111
2248	DEA	G	DEU943159317	HARLEY	2009	0504BS00052	0504	215	181	75	1805	59	70	-0.20	0.06	66	-1	-2	1	-3	2.80	107
2218	USA	G	USA196826	HILLTOP ACRES H DRIVER ET *TM	2003	0014BS00314	0014	671	266	81	1162	66	60	0.20	0.20	79	-1	0	-3	-2	2.78	110
2134	DEA	G	DEU942089722	HACKER	2008	0504BS00056	0504	77	70	72	1304	38	43	-0.20	-0.03	63	1	1	7	-3	2.66	114
2096	DEA	G	DEU94206868	HAKO	2009	0504BS00056	0504	63	58	72	1356	52	53	-0.06	0.04	64	3	1	7	-3	2.71	109
2086	DEA	G	DEU936432728	JUHUS	2003	0504BS00056	0504	3893	2291	86	231	68	46	0.71	0.45	80	-5	-3	-2	-4	2.50	105
2079	DEA	G	DEU814159177	HURETVEI	2009	0504BS00056	0504	53	45	71	1893	67	57	-0.16	-0.13	64	0	-1	0	1	3.03	108
2072	CHE	G	ITA1090008842	LAVAGE ZEUS VINO ZEPHIR	2007	0504BS00056	0504	137	123	76	499	51	51	0.36	0.41	72	0	2	-5	2.79	106	
2052	DEA	G	DEU944346439	VANPARI	2010	0504BS00056	0504	93	78	73	946	54	46	0.17	0.15	66	-1	2	0	-5	2.69	111
2037	DEA	G	DEU944387694	VARIANT	2010	0504BS00056	0504	29	27	67	1203	61	45	0.12	0.03	63	-1	0	-1	-2	2.80	109
2022	DEA	G	DEU943138078	PUCK	2009	0504BS00056	0504	126	116	69	1124	44	47	-0.04	0.07	59	2	6	-1	1	2.93	112
2005	DEA	G	DEU943841514	HARISSA	2009	0504BS00051	0504	70	59	71	920	45	33	0.08	0.02	63	5	3	7	5	2.94	109
1991	DEA	G	DEU943159309	HARDSOCK *TM	2005	0504BS00051	0504	5124	2669	83	891	30	36	-0.08	0.04	81	8	6	5	2.77	110	
1989	DEA	G	DEU944865345	JUSCH	2009	0504BS00051	0504	70	66	73	957	50	41	0.12	0.08	65	-3	-1	-6	2.57	110	
1987	DEA	G	DEU936949086	VASIR	2010	0504BS00053	0504	73	68	71	586	52	48	0.34	0.31	63	-2	-1	4	2	2.73	103
1987	DEA	G	DEU942113967	HOPRO *TM	2003	0504BS00053	0504	13334	5210	89	1413	76	52	0.19	0.01	87	0	-2	1	2	2.85	103
1983	DEA	G	DEU943206317	GS HARDING	2009	0504BS00053	0504	72	63	72	615	24	28	-0.03	0.08	63	4	4	8	-1	2.94	114
1964	DEA	G	DEU941920045	HALLELUJA	2009	0504BS00053	0504	59	43	68	1180	49	52	-0.01	0.11	63	2	2	1	3.01	108	
1963	DEA	G	DEU9434560337	GS HIEFLAU	2008	0504BS00053	0504	262	224	73	1175	69	56	-0.07	0.20	64	5	3	6	3	2.83	109
1960	DEA	G	DEU944704710	VALETTA	2009	0504BS00053	0504	87	74	73	1188	51	60	0.01	0.20	65	-3	-6	2	1	2.89	102
1951	CHE	G	CHE120083025164	SCHARZ BS VIGOR ANIBAL ET	2009	0196BS17394	2138	56	50	70	928	70	47	0.37	0.16	63	-2	-4	6	0	2.93	102
1938	ITA	G	ITA73990116161	SUPERBROWN VIVID *TM *TA	2010	0212BS00481	0212	125	117	77	496	27	31	0.07	0.16	74	14	14	10	4	2.77	111
1929	DEA	G	AUT479716317	GS HIGHWAY	2010	0212BS00481	0212	52	41	68	984	40	39	-0.01	0.04	63	0	3	3	-1	2.93	111
1928	DEA	G	DEU942953733	HAIFA	2008	0504BS00053	0504	77	74	71	864	57	45	0.25	0.18	61	-3	-3	0	-3	2.86	103
1927	DEA	G	DEU944870461	JULAU ET	2010	0504BS00053	0504	96	85	69	942	37	43	-0.03	0.12	62	-1	5	-1	-1	2.84	107
1923	DEA	G	AUT309255517	HANK *TM	2010	0504BS00053	0504	105	97	71	987	46	34	0.06	-0.01	63	-1	1	-2	2.86	112	
1914	FRA	G	FRA1210142097	ENZO	2009	0504BS00053	0504	27	22	70	1304	63	43	0.10	-0.05	67	3	4	0	2	2.78	103
1891	DEA	G	DEU942620106	HAVANNA *TM	2008	0504BS00053	0504	93	86	71	1173	65	44	0.18	0.02	62	-3	-4	3	-1	2.88	106
1889	DEA	G	DEU813384234	PATRIOT	2005	0504BS00053	0504	299	247	76	784	29	42	-0.05	0.16	67	2	6	1	0	2.96	103
1888	DEA	G	DEU941920049	HUCK	2008	0504BS00053	0504	76	71	71	820	27	41	-0.09	0.14	61	-1	1	6	-5	3.16	112
1879	DEA	G	DEU814462607	VIFF	2010	0504BS00053	0504	166	121	73	542	28	30	0.06	0.12	66	7	10	2	1	2.73	109
1861	DEA	G	DEU943853310	VAPIANO *TM	2009	0504BS00053	0504	292	246	74	1128	40	42	-0.09	0.02	65	0	-1	5	-2	2.65	105
1854	DEA	G	DEU943506480	HARDSOCK	2008	0504BS00053	0504	175	121	79	921	24	39	-0.17	0.07	71	2	7	2	-2	2.83	110
1853	DEA	G	DEU944710211	JUNGHOLZ	2010	0504BS00053	0504	58	54	67	671	65	49	0.44	0.30	60	-7	-10	-1	0	2.74	102
1853	CHE	G	CHE120076827089	DIETHELM'S GLENN GUSTI-ET	2009	0504BS00053	0504	106	91	75	875	51	44	0.17	0.16	72	9	3	1	7	3.19	102
1850	DEA	G	DEU941736604	ERASCO *TM	2008	0504BS00053	0504	99	92	70	1291	36	49	-0.22	0.04	61	-5	-9	1	3	2.95	106
1850	DEA	G	DEU939830728	PAYBOY *TM	2005	0504BS00053	0504	712	513	77	794	32	34	-0.01	0.07	67	7	10	1	2	2.85	103
1839	DEA	G	DEU944341119	HALEMOND	2009	0504BS00053	0504	79	71	70	850	39	52	0.04	0.08	62	1	-1	6	1	3.00	108
1839	DEA	G	DEU814204901	HURONTO	2008	0504BS00053	0504	37	33	72	1354	37	58	-0.24	0.04	65	-4	-6	3	-3	3.11	108
1836	ITA	G	ITA24990239569	SUPERBROWN CA MASCARI NOEL *TM	2009	0212BS00455	0212	84	78	71	497	22	32	0.01	0.18	68	8	6	2	2.66	109	
1832	CHE	G	CHE120064785308	R.B. JENS VALENTINO *TM	2008	0212BS00455	0212	160	122	74	1152	60	48	0.13	0.08	72	1	-1	3	4	2.84	100
1830	DEA	G	DEU942118004	HIGHLAND	2007	0504BS00053	0504	77	69	74	932	58	45	0.23	0.14	65	-2	-6	-6	-2	3.00	102
1829	DEA	G	DEU944694740	VEGAS	2010	0504BS00053	0504	42	36	70	537	35	28	0.15	0.10	65	1	5	2	-2	2.60	112
1826	DEA	G	DEU813323063	MODEST	2005	0504BS00053	0504	92	78	75	1459	42	52	-0.23	0.00	67	-8	-7	-3	-3	2.86	109
1825	DEA	G	DEU943043837	JUSTIN *TM	2010	0504BS00053	0504	64	61	68	310	34	39	0.26	0.33	61	-1	-5	1	3	2.87	107
1809	DEA	G	DEU943857138	JUSTIN	2010	0504BS00053	0504	70	67	68	435	43	35	0.29	0.24	60	-9	-7	1	-10	2.74	106
1803	DEA	G	DEU943508563	VISCONTI	2009	0504BS00053	0504	118	109	78	1073	29	39	-0.20	0.01	71	1	6	7	-2	2.77	111

TOP BROWN SWISS YOUNG BULLS BY GENOMIC PARENT AVERAGE FOR LPI (GPA LPI) - AUGUST 2015 GENETIC EVALUATIONS
MEILLEURS JEUNES TAUREAUX SUISSE BRUNE SELON LA MOYENNE DES PARENTS GÉNOMIQUE POUR L'IPV (IPV MPG) - ÉVALUATIONS GÉNÉTIQUES D'AOÛT 2015
(Based on young bulls at least 11 months old with semen available in Canada / Basée sur les jeunes taureaux âgés d'au moins 11 mois dont le sémen est disponible au Canada)

RANK	GPA LPI	REGISTRATION	NAME	A.I. CONTROLLER	SEMIN CODE	AGE	MILK	FAT	PROT	%F	%P	SCS	CONF	MS	F&L	DS	RP	NAME OF SIRE	NAME OF DAM
RANG	IPV MPG	ENREGISTREMENT	NOM	CENTRE d'I.A.	CODE DE SEMENCE	ÂGE	LAIT	GRAS	PROT	%G	%P	CCS	CONF	SM	P&M	PL	Cr	NOM DU PÈRE	NOM de la MÈRE
1	2079	CHE 120112742062	KIBA ANIBAL FACT-ET	200	0196BS28432	19	1087	29	43	-0.21	0.04	2.68	10	9	6	4	6	SCHARZ BS VIGOR ANIBAL ET	FRAGOLA ET
2	2054	CHE 120103791208	FALK T-W/TD-TM*TA	200	0196BS24289	33	962	39	43	-0.01	0.11	2.73	8	9	5	4	5	NEUTOP PAYOFF ENSTEIN *TM	FRAGOLA ET
3	1957	USA 68128315	JOBO VIGOR BUSH ET	7	0007BS00654	55	736	35	33	0.03	0.06	2.66	10	11	7	3	-2	SUNAMADE VIGOR ET	FRONT LINE PRONTO BESS ET
4	1956	ITA 14990107974	KIBA FASHION ET	200	0200BS07529	18	618	38	46	0.15	0.30	2.85	2	7	2	-2	-1	LAVAGE ZEUS VINO ZEPHIR	KIBA FRUGOLA ET
5	1929	USA 68144448	LIME ROCK SEASIDE BLOOM	200	0200BS00303	36	1154	47	44	-0.03	0.01	2.86	7	5	6	3	5	R N R PAYOFF BROOKINGS ET *TM	LIME ROCK NARCISUS PETUNIA
6	1929	840 3004509690	HOLYLAND TIMELESS ET	513	0076BS01402	21	750	34	38	0.03	0.12	2.84	3	4	5	0	0	HURAY	COZY NOOK JOEL TIPS ET
7	1923	USA 681568713	MEADO-BROOK DREAMIN SHAW ET	7	0007BS00873	20	994	47	41	0.06	0.04	2.79	7	7	3	1	3	HILLTOP ACRES ALL JACKSON ET	OLD TIME SWEET DREAM
8	1923	ITA 24990360669	CA MASCARI PAYS SLLI	200	0196BS25411	40	1136	39	41	-0.12	-0.02	2.72	6	7	4	5	3	PAYS SLLI ET	CA MASCARI AGIO LIETA ET
9	1887	USA 68128646	GUBELMAN DIPLOMAT	200	0200BS01001	14	582	42	36	0.23	0.20	2.73	5	4	6	1	5	LAVAGE ZEUS VINO ZEPHIR	GUBELMAN BROOKINGS DESIRE
10	1887	USA 68128646	COZY NOOK TWILIGHT TWIN	200	0200BS00117	53	524	24	25	0.03	0.07	2.84	11	11	10	4	5	R N R PAYOFF BROOKINGS ET *TM	COZY NOOK ET VEI TATUM
11	1880	USA 68147388	OLSONS MEL PAY IMPROVER ET	11	0011BS00685	31	571	43	29	0.24	0.09	2.67	7	9	3	2	-2	PAYS SLLI ET	OLSONS BRINKS MELODY *TM
12	1869	CHE 120107189674	HILLTOP ACRES CARTER KING-ET	200	0196BS25465	25	622	26	25	0.00	0.03	2.79	15	14	9	5	0	VOELKERS TD CARTER	HILLTOP ACRES V DOLLY ET
13	1863	CHE 120105797864	PASSAT	200	0196BS25458	26	684	30	33	0.03	0.10	2.86	14	11	8	9	3	PAYS SLLI ET	HILLTOP ACRES V DOLLY ET
14	1859	USA 68150445	BLESSING BROOKINGS ADVISOR	7	0007BS00871	32	512	28	25	0.07	0.07	2.67	9	9	8	0	3	PAYS SLLI ET	BLESSING VIGOR ALESSA ET
15	1854	USA 70827888	VICTORY ACRES GENOM CARTEL	513	0076BS00918	35	1264	45	42	-0.10	-0.04	3.00	9	6	7	3	-2	VOELKERS TD CARTER	VICTORY ACRES ETLAR LILLY 1208
16	1834	CHE 120110652608	BUERKLIS BS NIRVANA NATI	200	0196BS26867	21	668	32	26	0.05	0.04	2.98	10	12	7	4	0	MIR ZAST ACE NIRVANA *TM	BUERKLIS BS JOLDEN JAMBA
17	1789	CHE 120065632427	HILLTOP ACRES CARTER COOPER-E	200	0196BS25659	24	820	30	34	-0.05	0.05	2.79	13	11	6	6	-1	VOELKERS TD CARTER	HILLTOP ACRES V DOLLY ET
18	1772	USA 68156279	COZY NOOK CARTER TEQUILA ET*TM	7	0007BS00872	24	996	40	33	-0.03	-0.05	3.01	13	11	8	7	1	VOELKERS TD CARTER	COZY NOOK ALLOY TEQUILA ET
19	1770	CAN 11625261	GUBELMAN DAZZLER	200	0200BS00122	36	981	36	42	-0.08	0.05	2.84	1	-1	6	1	5	R N R PAYOFF BROOKINGS ET *TM	GUBELMAN JUHUS DAZZEL
20	1764	ITA 14990108005	KIBA VIGORAGE ET	200	0200BS07885	16	317	12	11	-0.04	-0.01	2.74	12	17	7	1	1	SUNAMADE VIGOR ET	KIBA DELICATA ET
21	1742	840 3004509742	HOLYLAND TURBO ET	200	0200BS01000	21	1015	33	36	-0.12	-0.02	2.85	7	10	4	1	3	ALDER'S WAGOR NELGOR	COZY NOOK JOEL TIPS ET
22	1742	840 3004509739	HOLYLAND TOUGHER ET	200	0200BS00121	42	739	30	27	-0.02	-0.02	2.79	6	7	5	1	8	R N R PAYOFF BROOKINGS ET *TM	COZY NOOK JOEL TIPS ET
23	1737	ITA 48990051310	LIME ROCK TOLEDO	200	0200BS00123	33	358	34	25	0.23	0.14	2.69	3	4	5	-2	0	OLSONS MEL ZEUS MOTOWN ET	LIME ROCK LALA PEORIA
24	1724	ITA 48990051310	MIR ASTERIX	200	0200BS07528	16	734	36	31	0.07	0.05	2.74	5	4	4	-1	3	SCHARZ BS PARKO ASTRO	MIR HURAY INES
25	1698	CAN 11014273	GUBELMAN DELEGATE	200	0200BS00119	51	114	37	35	0.08	0.11	2.72	4	3	2	2	4	VASIR	GUBELMAN JOEL DREW ET

CANADIAN DAIRY NETWORK / RÉSEAU LAITIÈRE CANADIEN

TOP 10 BROWN SWISS HERDS BY LPI / 10 MEILLEURS TROUPEAUX SUISSE BRUNE SELON L'IPV

(minimum 20 active cows with official LPI) / (minimum de 20 vaches actives avec un IPV officiel)

Rank	LPI	No. Cows	%	Name of Farm / Owner	City	Province	Milk	Fat	Protein	Fat %	Prot %	SCS	CONF	MS	F&L	DS	RP
Rang	IPV	No. Vaches	G	Nom de la Ferme / Propriétaire	Ville		Lait	Gras	Protéine	% Gras	% Prot	CCS		SM	P&M	PL	Cr
1	1332	59	17	GUBELMANN BROWN SWISS LTD	WALTON	ON	125	12	14	0.08	0.10	2.88	3.2	3.5	2.7	0.3	2.5
2	1209	46	0	SIGVIEW FARMS	MOOREFIELD	ON	145	15	12	0.11	0.07	2.91	-0.5	0.0	-0.3	-1.2	1.5
3	1195	53	0	SWISS LANE	LISTOWEL	ON	480	15	14	-0.06	-0.04	2.89	2.9	2.6	2.8	2.3	3.4
4	1186	40	5	FERME HANS ENR.	ACTON VALE	QC	569	13	16	-0.12	-0.06	2.95	1.7	1.2	2.0	1.7	0.9
5	1184	21	67	PAUFERLOU INC.	POHENEAMOOK	QC	217	13	9	0.05	0.01	3.04	4.4	4.0	3.4	3.5	2.5
6	1182	21	0	HEIWA FARM	ST-ALBERT	ON	317	14	10	0.01	-0.02	2.92	3.1	3.0	2.2	1.6	2.3
7	1156	25	0	FERME DES BELLES PRAIRIES INC.	ST-JEAN-SUR-RICHIEU	QC	231	15	11	0.06	0.03	2.92	1.9	1.3	1.2	1.9	3.4
8	1090	28	0	FERME BLYVIAN INC.	ST-HENRI COLEVIS	QC	197	5	7	-0.03	-0.01	3.02	4.1	3.8	2.4	2.3	1.7
9	1086	47	26	FERME M.C.F. LECLERC INC. (BS)	TROIS-RIVIERES	QC	144	3	4	-0.04	-0.01	2.99	3.6	3.4	3.0	2.4	2.7
10	1077	26	0	EXCELSIOR FARM	WYOMING	ON	131	9	9	0.05	0.05	2.91	1.1	1.3	1.2	0.7	0.5

August/Août 2015

Provincial and National Averages Used as Benchmarks for Genetic Herd Inventory Reports
Moyennes provinciales et nationales à titre de point de repère pour les rapports d'inventaire génétique du troupeau

Breed: Brown Swiss

- August 2015 / Août 2015 -

Race: Suisse Brune

All Active Cows / Toutes les Vaches Actives														
Province	No. Cows	% Inbreeding	Milk	Fat	Protein	% Fat	% Protein	SCS	CONF	Mammary System	Feet & Legs	Dairy Strength	Rump	LPI
	No. Vaches	% Consanguinité	Lait	Gras	Protéine	% Gras	% Protéine	CCS		Système mammaire	Pieds & membres	Puissance laitière	Croupe	IPV
NS / NÉ	23	7.12	73.9	4.4	4	0.02	0.01	2.96	3	2.3	2.5	2.9	2.5	1045
NB	10	8.69	131.6	8.1	6.7	0.03	0.02	2.82	2.6	1.7	2.0	0.7	2.2	1191
QC	975	6.67	110.8	4.3	4.5	0	0.00	2.97	1.5	1.3	1.4	0.9	1.4	1020
ON	729	6.75	154.4	6.6	6.1	0.00	0.00	2.95	1.7	1.5	1.4	1.2	1.8	1055
MB	263	7.56	-38.9	-2.5	-2.2	-0.01	0.00	2.97	2.9	2.4	1.6	2.1	3.4	926
SK	2	8.49	-214	-17.5	-17	-0.11	-0.09	2.91	1.5	1.5	2.5	-1.5	2	771
AB	46	4.11	442.1	9.5	12	-0.09	-0.05	2.95	-0.2	-0.2	-0.3	0.2	2.3	1081
BC / CB	71	7.87	121.3	0	2.8	-0.06	-0.02	2.97	3.9	3.3	2.6	2.6	3.2	1029
CANADA	2119	6.81	114	4.2	4.3	0	0.00	2.96	1.8	1.6	1.4	1.2	1.9	1023

Active Cows With Publishable Production Indexes / Vaches Actives avec Indices de Production Publiables														
Province	No. Cows	% Inbreeding	Milk	Fat	Protein	% Fat	% Protein	SCS	CONF	Mammary System	Feet & Legs	Dairy Strength	Rump	LPI
	No. Vaches	% Consanguinité	Lait	Gras	Protéine	% Gras	% Protéine	CCS		Système mammaire	Pieds & membres	Puissance laitière	Croupe	IPV
NS / NÉ	18	7.49	44.7	3.5	3.6	0.02	0.02	2.94	3.3	2.4	3.1	2.9	2.8	1056
NB	10	8.69	131.6	8.1	6.7	0.03	0.02	2.82	2.6	1.7	2.0	0.7	2.2	1191
QC	548	6.94	87.1	3.1	3.5	0.00	0	2.97	2	1.7	1.6	1	1.6	1018
ON	641	6.92	145.1	6.4	5.9	0.01	0	2.95	1.9	1.7	1.4	1.2	1.9	1057
MB	242	7.7	-45.6	-2.8	-2.5	-0.01	-0.01	2.97	3	2.5	1.6	2.2	3.5	923
SK	2	8.49	-214	-17.5	-17	-0.11	-0.09	2.91	1.5	1.5	2.5	-1.5	2	771
AB	42	4.17	462.8	9.9	12.4	-0.10	-0.05	2.95	-0.4	-0.4	-0.5	0	2.5	1091
BC / CB	67	7.81	128.4	0.3	3.5	-0.06	-0.02	2.97	4	3.4	2.8	2.7	3.3	1048
CANADA	1570	7.03	102	3.6	3.8	0.00	0	2.96	2.1	1.9	1.6	1.3	2.1	1024

Active Cows With Unpublishable Production Indexes / Vaches Actives avec Indices de Production Non-Publiables														
Province	No. Cows	% Inbreeding	Milk	Fat	Protein	% Fat	% Protein	SCS	CONF	Mammary System	Feet & Legs	Dairy Strength	Rump	LPI
	No. Vaches	% Consanguinité	Lait	Gras	Protéine	% Gras	% Protéine	CCS		Système mammaire	Pieds & membres	Puissance laitière	Croupe	IPV
NS / NÉ	5	5.8	179	7.8	5.8	0	-0.01	3.02	2	1.8	0.6	2.8	1.6	1006
NB	0	---	---	---	---	---	---	---	---	---	---	---	---	---
QC	427	6.32	141.2	5.9	5.9	0	0.01	2.98	1.0	0.8	1	0.8	1.3	1024
ON	88	5.49	222	8.2	7.9	0	-0.01	2.99	0.6	0.1	1.3	1.1	1.8	1041
MB	21	5.94	38.5	1.1	1.8	-0.01	0.01	2.93	1.4	1.3	1	1.4	2.5	960
SK	0	---	---	---	---	---	---	---	---	---	---	---	---	---
AB	4	3.44	224.8	5.3	7	-0.06	-0.02	2.93	1.5	1.3	1	3.0	0.8	977
BC / CB	4	8.91	3	-5	-8.3	-0.07	-0.09	3.03	2.3	1.8	-1.5	1.3	0.5	712
CANADA	549	6.17	150.2	6.1	6	0	0.00	2.98	1	0.7	1	0.9	1.4	1022

Lifetime Performance Index (LPI) Formula - August 2015 -

$$\text{LPI} = \left(\begin{array}{l} \text{Production} \\ \text{Component} \\ \text{x Emphasis} \\ \text{x Factor} \end{array} + \begin{array}{l} \text{Durability} \\ \text{Component} \\ \text{x Emphasis} \\ \text{x Factor} \end{array} + \begin{array}{l} \text{Health \&} \\ \text{Fertility} \\ \text{Component} \\ \text{x Emphasis} \\ \text{x Factor} \end{array} \right) + \text{Constant}$$

Where the relative emphasis placed on each of the three main components in each breed is presented in the following table along with the multiplicative factors for each component.

Breed	LPI Constant	Production		Durability		Health & Fertility	
		Emphasis	Factor	Emphasis	Factor	Emphasis	Factor
Ayrshire	1835	50	.5790	31	.7077	19	.8811
Brown Swiss	855	50	.6112	30	.7190	20	.9536
Canadienne	940	48	.4900	32	.8041	20	.7904
Guernsey	611	50	.5132	30	.7040	20	.7364
Holstein	1821	40	.5884	40	.7329	20	.6934
Jersey	985	57	.6979	33	.7202	10	.6599
Milking Shorthorn	1040	54	.5449	31	.7950	15	1.2286

Production Component (PROD):

$$\text{PROD} = [W_{PY} \times (PY - \text{Avg}_{PY}) / SD_{PY}] + [W_{PD} \times PD / SD_{PD}] + [W_{FY} \times (FY - \text{Avg}_{FY}) / SD_{FY}] + [W_{FD} \times FD / SD_{FD}]$$

Where PY = Protein Yield, PD = Protein Deviation, FY = Fat Yield and FD = Fat Deviation, which are standardized using the appropriate averages (Avg) and standard deviations (SD) and then multiplied by their respective relative weight (W), all of which are breed specific as outlined in the following table.

Parameter	Trait	Ayrshire	Brown Swiss	Canadienne	Guernsey	Holstein	Jersey	Milking Shorthorn
EBV Averages	Milk Yield	-27	-57	-283	-15	219	120	-113
	Fat Yield	-2	-1	-5	-1	7	7	-4
	Protein Yield	-1	-1	-5	-2	8	5	-3
EBV Standard Deviations	Milk Yield	620	500	450	550	740	760	450
	Fat Yield	25	20	11	23	28	34	19
	Fat Deviation	.21	.20	.20	.27	.28	.38	.16
	Protein Yield	21	17	7	15	21	25	11
	Protein Deviation	.11	.12	.13	.10	.12	.16	.09
Relative Weights Within the Production Component	Fat Yield	4.0	3.8	4.0	3.8	4.0	2.8	3.6
	Fat Deviation		0.2		0.2		0.5	0.4
	Protein Yield	6.0	5.7	6.0	5.7	6.0	5.7	5.4
	Protein Deviation		0.3		0.3		1.0	0.6

Durability Component (DUR):

$$DUR = [W_{HL} \times (HL - 100)/5] + [W_{MS} \times MS/5] + [W_{F\&L} \times F\&L/5] + [W_{DS} \times DS/5] + [W_{RP} \times RP/5]$$

Where HL = Herd Life, MS = Mammary System, F&L = Feet and Legs, DS = Dairy Strength and RP = Rump, and each trait is standardized using the appropriate averages and standard deviations and then multiplied by their respective relative weight (W) that is breed specific as outlined in the following table.

Parameter	Trait	Ayrshire	Brown Swiss	Canadienne	Guernsey	Holstein	Jersey	Milking Shorthorn
Relative Weights Within the Durability Component	Herd Life	4.7	4.0	4.0	4.0	2.0	2.0	2.6
	Mammary System	3.1	3.2	3.2	3.2	4.0	4.0	4.0
	Feet & Legs	2.2	1.6	2.2	2.4	3.0	3.0	2.6
	Dairy Strength			0.6	0.4	1.0	1.0	0.8
	Rump		1.2					

Health & Fertility Component (H&F):

$$H\&F = [W_{DF} \times (DF-100)/5] + [W_{MR} \times (MR-100)/5] +$$

$$[W_{SCS} \times -1 \times (SCS-3.00)/0.23] + [W_{UD} \times UD/5] + [W_{MSP} \times (MSP-100)/5] + [W_{LP} \times (LP-100)/5]$$

Where DF = Daughter Fertility, MR = Mastitis Resistance, SCS = Somatic Cell Score, UD = Udder Depth, MSP = Milking Speed and LP = Lactation Persistency. The relative weights for each trait (i.e.: W_{DF} , W_{MR} , W_{SCS} , W_{UD} , W_{MSP} and W_{LP} respectively), which are specific to each breed, are provided in the following table.

Parameter	Trait	Ayrshire	Brown Swiss	Canadienne	Guernsey	Holstein	Jersey	Milking Shorthorn
Relative Weights Within the Health & Fertility Component	Daughter Fertility	5.3	4.0	5.0	6.7	6.7	3.0	2.0
	Mastitis Resistance	3.7				3.3	7.0	
	Somatic Cell Score		3.0	2.6	2.0			4.8
	Udder Depth		1.0	1.6	1.0			2.4
	Milking Speed	0.5	2.0	0.8	0.3			0.8
	Lactation Persistency	0.5						

Other interesting reports from CDN can be viewed at: https://www.cdn.ca/files_ge_articles.php

Swissgenetics Breeding Value Highlights August 2015



BROWN SWISS

New releases:

Bachofen's Huray STABILO (Huray x Eagle x Denmark) His father is leading every top list worldwide and STABILO is one of his most complete sons. He is a balanced bull and excels for protein % and kg, SCS and longevity. If we compare him with other Huray sons, we can easily understand that STABILO is one of the most solid sons of Huray for type and mammary system.

Florin's Vigor VIDAL-ET (Vigor x Gardan x Pete Rose) VIDAL is the second proven sire out of the famous cow Gardan GERDA, she was the best udder cow at the European contest of Rotholz 2008. VIDAL's indexes are reflecting the top qualities of his dam: high production with exceptional udder functionality. VIDAL is the right choice for breeders who wish to improve production, udder and all fitness traits!

Proven sires:

NORWIN (Nesta x Precise x Ensign) NORWIN has had a new top run, he added more daughters and has made another jump up for milk kg. Now he is one of the most interesting bulls worldwide, no other bull could offer such high production indexes combined with very high numbers for feet & legs and udder composite!

Scherma Glenn BLOOMING-ET (Glenn x Arsene x Premium) For the third time BLOOMING added more than 50% new daughters and now has 927 daughters on his proof! His indexes are once more confirming his incredible qualities: easy leader of all conformation traits, big improver of protein % and kg, high DPR index.

Schärz BS Vigor ANIBAL-ET (Vigor x Mascot x Starbuck) It's not easy to find a more complete bull than ANIBAL! Currently with 125 daughters, ANIBAL has a solid proof and he is a top bull worldwide on every different ranking system (top ten bull in Switzerland, Germany, Italy, France, USA and Canada)

Mani's Vigor VILENO (Vigor x Eagle x Collection) VILENO is another Vigor son with a very interesting profile, out of the family of Wurl WACHTEL, different maternal bloodlines and high indexes: milk kg (+1065), persistency (110), SCS (106), milking speed (106), longevity (112) and conformation (114). The right bull for Glenn and Huray bloodlines!

Diethelm Glenn GUSTI (Glenn x Zeus CH x Premium) GUSTI combines two of the top Swiss bulls of the last 15 years: Glenn and Zeus CH! GUSTI is the best Glenn son for all production traits, for frame and rump structure. The perfect mating for Vigor, Zaster and Dally bloodlines.

Käligen Nesta NESCARDO (Nesta x Picard x Poldi) NESCARDO continues to be one of our top demanded bulls. His indexes and his calves born worldwide confirm that NESCARDO is a special bull.

Studer's BS Glenn GENOX-BOY (Glenn x Eagle x Starbuck) GENOX-BOY with the same number of daughters also increases for milk kg. Though his great strength lies in conformation (+1.73), his notes for frame (+2.25) and rump (+2.68) are exceptionally high. This means GENOX-BOY sires powerful, large and balanced cows.

Schärz BS ALIBABA (President x Starbuck x Combust) We can't finish without reminding you that ALIBABA, with 9510 daughters, is one of the most popular bulls with an incredible proof worldwide. ALIBABA continues to be one of the best available bulls for components, fitness traits and mammary system.

Genomics:

Scherma Blooming BIVER (Blooming x Nesta x Moiado) Like his sire BLOOMING, BIVER is leading all genomic lists for conformation, mammary system and continues to be an international sire of sons.

FALK (Einstein x Huray x Jolden) Currently, the sire of FALK has a solid second crop result and for this reason FALK is gaining more positions. He is a top bull if you wish to improve type and production at the same time.

FACT (Anibal x Huray x Playboy) He is one of the first available sons of ANIBAL, leader for the Total Merit Index (143 GZW) milk kg (+1409) and SCS (130). High profile for type and udder specialist!

NATIONAL (Nirvana x Jolden x President) NATIONAL comes out of the famous family of President SAMBA and his dam is a maternal sister of Zaster ZAMBA! NATIONAL is the best Nirvana son available with a complete profile!



ORIGINAL BRAUNVIEH

New release:

Bucher's Milton MELINO (Milton x Oswald x Galant) MELINO, the Original Braunvieh bull, is a specialist for SCS, protein, mammary system and is improving his interesting proof run after run.

Genomics:

LORDAN (Rino x Lukas x Gral) for the first time we have an Original Braunvieh genomic bull and the start couldn't be better!! LORDAN has a Total Merit Index of 123. As dual purpose bull LORDAN has a perfect profile, he will improve production as well as components and at the same time will have good progeny for the beef indexes.

Swissgenetics - August 2015 - Order Deadline/Délai de commande - September 8, 2015

Contact your local AI unit for further information. Contactez votre unité IA local pour de plus amples informations.

CIAG 1-800-563-5603, EastGen 1-800-267-9222, ext 339 (Nancy), WestGen 1-800-563-5603

				GLP/IMG	% Reliability/Fiabilité	Daughters/Filles	Milk/Lait (kg)	Fat/Gras (kg)	Protein/Protéine (kg)	% Dev./Différ	% Dev./Différ	Daughters/Filles
196BS28432	* sexed	Kiba Anibal FACT ET BH1	(Anibal x Huray x Playboy)	MPG	52		1087	29	43	-0.21	0.04	
196BS24289		FALK BH1	(Einstein x Huray x Jolden)	MPG	50		962	39	43	-0.01	0.11	
196BS23838	* sexed	Scherma Blooming BIVER	(Blooming x Nesta x Moiado)	MPG	49		565	37	42	0.16	0.27	
196BS25485		Hilltip Acres Carter KING ET	(Carter x Vigor x Premium)	MPG	53		622	26	25	0.00	0.03	
196BS17348		Diethelm's Glenn GUSTI ET	(Glenn x Zeus x Premium)	MACEG	71	106	875	51	44	0.17	0.16	96
196BS16667		Buerklis BS Nirva NATIONAL	(Nirvana x Jolden x Président)	MPG	50		668	32	26	0.05	0.04	
196BS23570		Jolahofs Vigor JAVIG	(Vigor x Collection x Zoldo)	MACEG	70	50	515	34	31	0.15	0.15	47
		Zumbühl's BIG STAR	(Blooming x Nesta x Collection)	MPG	49		290	21	31	0.11	0.26	
		Grob's Glenn FLOH	(Glenn x Dominate x Milestone)	MACEG	70	77	428	35	22	0.20	0.08	64
		Mani's Vigor VILENO	(Vigor x Eagle x Collection)	MACEG	70	98	766	19	33	-0.16	0.07	85
196BS16716		Kaligen Nesta NESCARDO	(Nesta x Picard x Poldi)	MACEG	69	90	329	1	11	-0.17	-0.02	75
196BS17089		Studer's BS Glen GENOX-BOY BH1	(Glen x Eagle x Starbuck)	MACEG	68	79	448	12	17	-0.09	0.02	69
196BS18360		NORWIN	(Nesta x Precise x Ensign)	MACEG	70	116	912	23	30	-0.19	-0.03	91
		Scherma Glenn BARACK -ET	(Glenn x Premium x Simon Star)	MACEG	71	98	254	21	17	0.12	0.10	78
196BS17199		Vetsch's Nesta CALVIN ET	(Nesta x Camelot x Pete Rose)	MACEG	69	99	146	-10	3	-0.20	-0.04	88
196BS15725		Joos Zeus BACCARDO	(Zoldo Zeus x Eros x Ensign)	MACEG	71	93	585	28	18	0.04	-0.04	87
196BS13528		Jolahofs Polo JONGLEUR ET	(Polo x Starbuck x Jinxking)	VEEG	76	39	-418	-31	-20	-0.16	-0.04	33

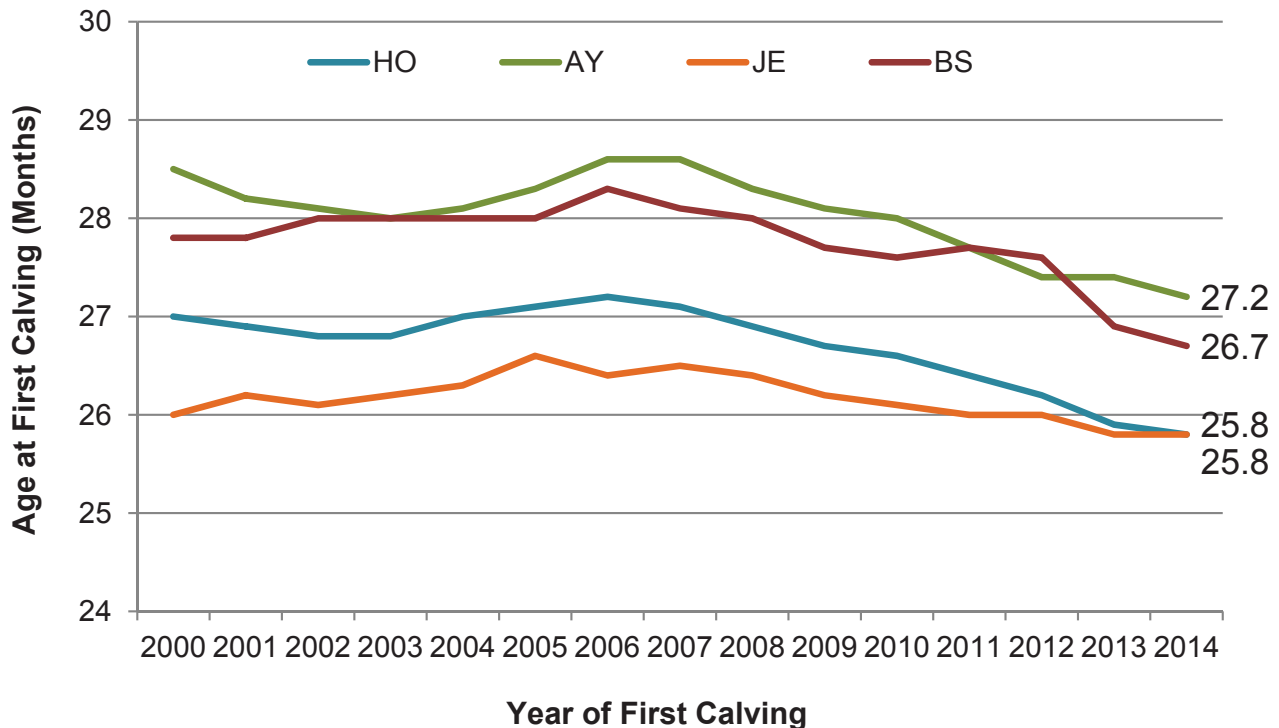
Age at First Calving and Profitability

Whether you're milking 50 or 500 cows, heifer rearing represents a significant cost to any dairy operation - one that is typically second only to feed costs. What's more, a heifer spends her first lactation paying for herself, generally not making you money until second lactation. Research has shown that the single most important factor influencing heifer rearing costs is age at first calving. Using cow profitability data, CDN examined the influence of age at first calving on lifetime profit in the four breeds of largest population in Canada.

Average Age at First Calving - How are we doing?

Trends in age at first calving are shown for Holstein, Ayrshire, Jersey and Brown Swiss in Figure 1. From around 2003 to 2006 there was a slight increase in the average age at first calving for all breeds. This was likely associated with border closures due to BSE, leading producers to wait longer to calve heifers due to an industry-wide oversupply of cows. Since this time, however, the average age at first calving has been decreasing steadily in all breeds. From 2006 to 2014, the average first calving age in Holsteins has dropped 1.4 months to the current average of 25.8 months. Interestingly, this is the same average age at first calving for Jerseys - a breed that reaches puberty one to two months earlier than the other breeds represented. In general, age at first calving is higher in the Ayrshire and Brown Swiss breeds, which average 27.2 and 26.7 months, respectively.

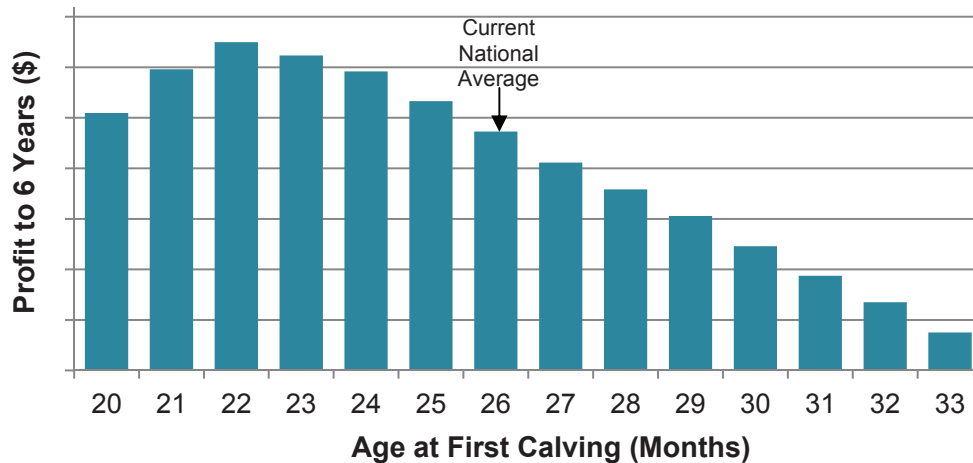
Figure 1: Trend in Average Age at First Calving by Breed



expenses. A cut-off of six years of age was used as it proved to capture each cow's ability to survive through multiple cycles of reproduction, health, functional conformation and production - an imperative feature when looking at lifetime profitability.

Figure 2 shows how average profit to six years varies based on the age at first calving for Holsteins. As mentioned above, the national average first calving age for this breed currently sits at around 26 months. However, the data suggests that 22 months of age is the ideal time for Holstein heifers to calve in order to maximize their future lifetime profitability. Interestingly, and in accordance with research, calving Holstein heifers before 22 months contributes to decreased total lifetime profit.

Figure 2: Average Profit to 6 Years by Age at First Calving in Holsteins



The most profitable age at first calving may differ to some degree between breeds. For example, the analysis reveals that the most profitable first calving age for Holstein and Jersey is 22 months whereas for Ayrshire and Brown Swiss, it is 23 months (Table 1). What also varies by breed is the amount of extra profit per cow to be gained by decreasing the age at first calving from the current breed average to the most profitable age. For example, the amount of lifetime profit lost due to calving one typical Holstein heifer at 26 months compared to 22 months amounts to \$880, on average. Assume a 100 cow herd calves 30 replacements per year, most of them at 26 months. If the same herd calved even 10 of the 30 replacements at 22 months instead of 26 months, the increased profit to six years for the ten animals that calved earlier would amount to nearly \$9,000!

While all breeds could benefit from reducing their average age at first calving, the greatest benefits could be reaped by the Brown Swiss breed. Of the four breeds studied, the average first calving age is the highest for Brown Swiss and Ayrshire heifers at 27 months. Profitability in Brown Swiss, however, is more negatively impacted by a higher age at first calving. Calving Brown Swiss heifers at 23 months, as opposed to 27 months, could lead to an average profit gained of nearly \$1,400 per animal.

Table 1: Profit Gained by Decreasing Average Age at First Calving

	Holstein	Ayrshire	Jersey	Brown Swiss
Current average age at first calving (months)	26	27	26	27
Most profitable age at first calving (months)	22	23	22	23
Profit per cow gained by decreasing the current breed average to the most profitable age at first calving	\$880	\$870	\$920	\$1380

The main advantages of lowering age at first calving include reducing rearing costs as well as reducing the amount of time in which the heifer is a drain on farm resources. Disadvantages of lowering the average age at first calving may include a reduction in first lactation milk yield. However, research has shown that despite this potential reduction in first lactation, production per year of herd life is typically increased by lowering the age at first calving. In addition, while the first lactation may be influenced by younger calving ages, future lactations, longevity and health are not, as long as first calf heifers freshen at an adequate weight.

Since each dairy operation has its own set of unique management and environmental conditions, it may not be possible for all herds to attain one industry-wide goal for age at first calving. This, however, does not mean that we should not work towards shorter rearing periods by calving heifers earlier - clearly there is profit to be made in doing so. Work with your herd veterinarian to assure you're meeting defined targets for age at first calving that optimize profitability and are in line with your operations specific management needs.

Authors: Lynsay Beavers, Industry Liaison Coordinator, CDN
Brian Van Doormaal, General Manager, CDN

CDN Coloured Breed Highlights



Coloured Breed Highlights - August 2015 -

The August 2015 genetic evaluation release includes significant changes for all breeds. For Holstein and Jersey, the new profit-based index, Pro\$, is officially launched. For the other breeds, the LPI (Lifetime Performance Index) formula has been modified to enhance its association with profit accumulated over several lactations, instead of adding Pro\$ as a second national selection index.

Brown Swiss Breed Welcomes New #1 LPI Sire

R N R Payoff Brookings ET (Payoff x Denmark) receives his first official domestic LPI with an outstanding result by taking over #1 LPI, thereby forcing the former breed leader, Blessing Prophet Ransom, to #2 LPI position. The Top 5 LPI list is completed by Olson Millenium, Schamaun BS Gordon Glenn ET and Scharz BS Presid Alibaba, respectively. Cozy Nook W Manchester (Wonderment x Vigor) is the highest young sire graduate this round, starting at #11 LPI. For Brown Swiss cows, the group among the Top 5 GLPI remain the same with only minor re-ranking. Still at #1 GLPI, Gubelman Juhus Crystal is now followed by Gubelman Brookings Claire (#2), Gubelman Juhus Dazzel (#3), Pauferlou Glenn Salsa ET (#4) and Pauferlou Zeus Uriele at #5 GLPI. The highest newly indexed cow this round is Deschênoise Alibaba Blues, who debuts in #12 position for GLPI.



Québec Spring Show

Last April 17, the Brown Swiss Show was held at the Québec Spring Show located in Victoriaville. A total of 26 individuals shown by 13 exhibitors paraded in front of the judge for the day, Mr. Joël Lepage. You will find hereafter the show results:

INTERMEDIATE HEIFER

1. MILKSHAKE FANTASTIC CLÉOPATRE -
Bred & Owned
Antonin Marcoux

SENIOR HEIFER

1. VERONAMOUR JOSY GOLDMINE - Bred & Owned
Les Élevages Célestar Inc
2. BROWN HEAVEN GLENCR SNOWFLAKE
Ferme Jolidai et Ferme Chamcy
3. MILEC DALLY BELLE ET
Ferme MCF Leclerc Inc
4. MILEC TANBARK ROSIE
Ferme MCF Leclerc inc.

SUMMER YEARLING

1. BROWN HEAVEN MANDEL JEAVER
Jeff Stephens, Andrew Denhaan
2. ANFIELD VIGOR EDEN ET
Ferme Chamcy
3. RENCIE GOLDMINE HARARI - Bred & Owned
Ferme Rencie Inc.
4. MILEC BROOKINGS ISABELLA
Ferme MCF Leclerc inc.
5. MILEC TWILIGHT ALINE ET
Ferme MCF Leclerc Inc

JUNIOR YEARLING

1. ARETHUSA WHISKEY NORDICA ET
Lookout, Gerald Halbach, Sherri Hall

2. GLEN ISLAY FANTASY - Bred & Owned
Amanda & Andrew Denhaan
3. JOLIDAI AMARETTO BRITOUNE
Ferme Jolidai et Ferme Chamcy
4. DOLI BROWN TWILIGHT ZOE
Ferme MCF Leclerc inc.
5. RENCIE SPEEDY SUISGODY
Ferme Rencie inc.

INTERMEDIATE YEARLING

1. VONLA MANCHESTER BETTY - Bred & Owned
Ferme Chamcy
2. GOULAISE DELEGATE BALOCHE
Sylvain Legaré
3. GOULAISE TWILIGHT BLONDY
Ferme Lehmann

SENIOR YEARLING

1. BROWN HEAVEN ZEUS US VALSIE
Ferme Kildare
2. MILEC BROOKINGS ARLENE - Bred & Owned
Ferme MCF Leclerc inc.

JUNIOR BREEDER BANNER

1. MILEC
2. BROWN HEAVEN
3. GOULAISE

JUNIOR EXHIBITOR BANNER

1. Ferme MCF Leclerc inc.
2. Ferme Chamcy

3. Ferme Jolidai et ferme Chamcy

JUNIOR CHAMPION

ARETHUSA WHISKEY NORDICA ET
Lookout, Gerald Halbach, Sherri Hall

RESERVE JUNIOR CHAMPION

BROWN HEAVEN MANDEL JEAVER
Jeff Stephens, Andrew Denhaan

JUNIOR HONOURABLE MENTION

GLEN ISLAY FANTASY
Amanda & Andrew Denhaan

SENIOR 2-YR-OLD

1. MILEC WONDERMENT GINA -
Best Udder and Bred & Owned
Ferme MCF Leclerc inc.
2. VONLA AMY DAVID
Dominic Vallee
3. HINSY JITSUE POCAHONTAS
Ferme Jolidai et Ferme Chamcy

JUNIOR 3-YR-OLD

1. SOUTHBRAE GOLDMINE ANGEL - Best Udder
Ferme Jolidai Et Ferme Chamcy

5-YR-OLD

1. MILEC AGIO MARTHA - Best Udder and Bred &
Owned
Ferme MCF Leclerc inc.

ADULT COW

1. RENCIE AGIO SUISSY - Best Udder and Bred &
Owned
Ferme Rencie inc.

BREEDER BANNER

1. MILEC
2. RENCIE
3. BROWN HEAVEN



EXHIBITOR HERD

1. Ferme MCF Leclerc inc.
2. Ferme Jolidai et Ferme Chamcy
3. Ferme Rencie inc.

BREEDER HERD

1. MILEC - Ferme MCF Leclerc inc
2. RENCIE - Ferme Rencie Inc

GRAND CHAMPION –

RENCIE AGIO SUISSY
Ferme Rencie inc.

RESERVE GRAND CHAMPION - MILEC AGIO MARTHA

Ferme MCF Leclerc inc.

HONOURABLE MENTION –

SOUTHBRAE GOLDMINE ANGEL
Ferme Jolidai et Ferme Chamcy



On April 16 was the Québec Spring Show Coloured Breed Sale where 9 lots of Brown Swiss animals were consigned, cumulating an average of \$2,867. You will find a summary below:

LOTS	ANIMAL NAME	PRICE	BUYERS	CONSIGNEE
01	Anfield Dy Jane's Elude	\$3600	Ferme Plein Soleil	Kevin Mueller, Huntindon
06	Obermatt Ritana Brookings ET	\$2600	Ferme Pauferlou	Ferme Mathis et fils inc, Saint-Sylvere
09	Obermatt Rita Brookings ET	\$3200	Ferme Plein Soleil	Ferme Mathis et fils inc, Saint-Sylvere
10	Goulaise Twilight Blondy	\$3300	Ferme Lehmann	Ferme Goulaise inc, Saint-Bernard
11	Goulaise Delegate Baloché	\$2100	Sylvain Légaré	Ferme Goulaise inc, Saint-Bernard
12	Milec Twilight Aline ET	\$2000	Ferme Rencie Inc.	Ferme MCF Leclerc inc. Trois-Rivières
13	Brown Heaven Glenor Snowflake	\$2400	Jeannot & Lise Deshamais	Ferme Brown Heaven, Verchères
17	Jolidai Cafino Nibo	\$3100	Ferme M&M Desrochers inc.	Francis Roberge
18	Insy Jitsue Pochahontas	\$3500	Jeannot & Lise Deshamais	Sylvain Hinse, Thingwick
Sales Total		\$28,500		
Overall Average		\$2867		
Number of Lots		9		

The Québec Brown Swiss Club wishes to thank all the exhibitors, consignees and buyers for attending the 1st edition of the Spring Show!

We look forward to seeing you again next year from April 13 to 15, 2016!



Change in management!

Unfortunately, for reasons beyond our control, Mr. Stéphane Deslauriers is no longer in charge of breeds at Holstein Québec, so at the same time, he is no longer working for us. Ms. Patricia Normandin will now be acting as resource person at the Québec Brown Swiss management level. Many thanks to Stéphane for the two years he worked with us. He was awesome!

2015 Dairy Supreme

Welcome to all Canadian breeders to the Dairy Supreme that will be held from November 5 to 7, 2015. The Brown Swiss Show will be held on Thursday November 5, starting at 8:00 a.m. For more information, visit the event website at www.supremelaitier.com

DU 5 AU 7 NOVEMBRE 2015, UN INCONTOURNABLE POUR TOUS LES PRODUCTEURS DE LAIT - FROM NOVEMBER 5TH-7TH 2015, A MUST FOR ALL DAIRY PRODUCERS



LE SUPRÊME LAITIER
SUPREME DAIRY SHOW
SAINT-HYACINTHE, QUÉBEC, CANADA

**LE CENTRE BMO :
AU CŒUR DE L'ÉVÈNEMENT
AT THE HEART OF THE EVENT**

- ✓ JUGEMENTS
- ✓ ENCANS
- ✓ STANDS COMMERCIAUX
- ✓ ÉQUIPEMENTS
- ✓ CONFÉRENCES

Jeudi 5 nov. / Thursday Nov. 5th
 8 am : Suisse Brune / Brown Swiss, Réjean Leclerc, Québec
 8 am : Jersey, Claudio Aragon, Brésil / Brazil
 11 am : am Ayrshire, Callum McKinven, Quebec
 2 pm : Canadienne, Luc Pelletier, Québec

Autres activités : / Other activities :
 Formation continue par l'ITA / Continuous training by ITA:
 Cliniques laitières sur différents thèmes ! Dairy clinics on different themes!
 5 à 7 Panel sur l'élevage en traite robotisée «ouvert à tous»
 5 to 7 Panel on robotic milking system "open to all" 

Vendredi 6 nov. Friday Nov. 6th
 8 am : Holstein Rouge/ Red Holstein David Crack Jr, Québec

10 am Conférence offerte par le / Conference offered by  CRAAQ
 1 pm : Vente Suprême / PM supreme Sale 
 5 pm : Lunch offert par / Lunch offered by 
 6 pm : Vente d'embryons/ embryo sale
 Holstein Québec

Samedi 7 nov. Saturday Nov. 7th
 8 a.m. Holstein, Brian Carscadden, Ontario

5 pm : Championnat Suprême Junior & Championnat Suprême Senior
 Supreme Junior Championship and Supreme Senior Championship

**SUIVEZ TOUTES LES NOUVELLES ET LES DÉTAILS SUR
FOLLOW ALL NEWS AND DETAILS ON
SUPREMELAITIER.COM**




DATES D'INSCRIPTIONS: DU 1^{ER} SEPTEMBRE AU 18 OCTOBRE POUR PRIX PRÉFÉRENTIEL ! REGISTRATION DATES : FROM SEPTEMBER 1ST TO OCTOBER 18TH FOR PREFERENTIAL PRICE !

Message From The Secretary-Manager's Desk



Change and exciting opportunities, seems to be a theme as we move through the year as the association continues to progress forward. There were many new ideas brought forth and much discussion at the Annual General Meeting, most of which were highlighted in the press release following the meeting. I will update you on the development of some of the main opportunities moving forward with other topics listed elsewhere within the newsletter.

The change of registrar from Canadian Livestock Records to Holstein Canada will begin on January 1, 2016. We ask members over the next few months to have their registrations current in order to make the transition to Holstein Canada as smooth as possible. There have been many discussions and meetings with Holstein Canada staff as we work through this transition and more detailed work for this fall. Closer to year-end a package will be sent to each member which will include everything required to make for a smooth conversion. If however you have a question or concern please feel free to contact me or your provincial representative. We will be sure to help as best we can. As an update on current statistics, the number of registrations have increased nicely from the same period last year, with transfers and memberships up as well.

It was disappointing for the breed to not have a national show last year. It was determined a survey was required to assess the interest level for the Royal Brown Swiss Show. Thank you to our exhibitors who completed the survey. After summarizing the results, it would not be possible to meet the minimum number of entries for 2015 and thus there will not be a Royal Brown Swiss show this year. After

much discussion, on a trial basis for this year, the Board accepted an invitation to participate at the Supreme Dairy Show in St. Hyacinthe, Quebec. The Board of Directors are excited to once again have a national show planned for this year. The decision of the location of the 2016 national show will be made by the Board following discussion from the next AGM.

There were three recommendations from the Breed Improvement Committee which the Board of Directors will discuss further. One of the recommendations was for the Board to set a production goal for the breed. I encourage you as members to consider what might be a realistic production goal for the breed and forward your suggestions to your provincial representative or the office.

With a number of changes and new opportunities ahead for the breed, we must always remember we pull the most when we pull together. Looking forward to working together on the many opportunities for the breed.

Kind Regards,

Jessie