



CANADIAN  
**Brown Swiss  
& Braunvieh**  
ASSOCIATION



AGM Details

**3**



Change of  
Registrar

**1 & 38**



National Show  
Results

**28**



# December 2015 Newsletter

At your convenience please visit us at our web-site: [www.browncow.ca](http://www.browncow.ca)

## Change of Registrar



**Holstein Canada**

Starting January 1, 2016 please  
forward all registry work to:

Canadian Brown Swiss & Braunvieh  
P.O. Box 610 Brantford, ON N3T 5R4

For general registry inquiries please call 1-855-756-  
8300, Crystal Smith (Bilingual) extension 208 or  
Grace Cyperling (English only) extension 214.

## All Canadian Contest

Please submit your All Canadian entries to the office by December 31, 2015 or as soon as possible thereafter. The entry form can be found on the association website at [www.browncow.ca](http://www.browncow.ca). Contact the office if you require a hard copy of the form sent to you.

The results will be announced at the Annual General Meeting.

## Message From The President

As 2015 winds to a close there is a great deal our Association has to reflect on and look forward to.

We had struggles this year, I won't sugar coat it. They included a large decrease in membership in 2014, the loss of the Brown Swiss show at the Royal Winter Fair and our financial report had us in the red.

Yet the feeling I get when I talk to breeders is one of optimism about the future of our Association and breed. Membership has risen by 10% which is amazing and will hopefully increase as we come on line with Holstein Canada and simplify the process.

Yes we had no show at the RWF, but The Supreme show in Ste-Hyacinthe was named our National show for 2015 and it had a quality line up with 3 provinces present. The exhibitors I spoke with loved the facilities and raved about how they were treated and how aggressive the organizers were in wanting to make it bigger and better next year. The thing that stood out to me was the number of children that were ring side watching the show with their parents or watching their parents in the ring. Our future is bright!

We introduced new production awards this year. They are mailed when a lactation is completed and meets certain requirements. We have heard much positive feedback from this addition. This came about from a suggestion from membership. Please continue to send in ideas, resolution or comments to the Provincial and National Boards, they are welcomed and can make a difference

I have not mentioned the most amazing achievement. By now you have heard of the great Brown Heaven Glenn Fantasy and her tremendous win at Madison. Congratulations Dave and Josee. To add to this Bradner Jongleur Pastime won the Milking yearling class, Nor Bella Paul Eve was 1st Jr 3-yr old and Eloc Wagor Kandid was the top Aged cow. 4 Canadian bred cows won their class at Madison. There are only 9 milking classes. This is



unbelievable!

As you can tell I may get a little too excited by show results, but I'm also just as excited looking forward to our Annual Meeting that Ontario will be hosting in Guelph. Who will have the next Class leader in milk/fat/or protein? Who has the top herd BCA of the breed? Will Mark convince Dale to buy another box of lint? Will Ernst out bid everyone at the silent auction? Whose farms will we visit and what knowledge or idea will we glean from their experience? All these questions and more will be answered at the Annual General Meeting so please join us!!!

The question we are asked most is about Holstein Canada and our registration. Though it is complicated here are the basics. We are on track to begin registering with them in early 2016. We have begun transferring data from CLRC to Holstein Canada, but until we run the first trials we won't be able to say exactly what day it starts. Please keep your transfers and registration up to date with CLRC as this will make the change easier. Within the newsletter there are further details on how to proceed. All of the programs will not be available to us immediately, and will be phased in over a period of time. Patience and open dialogue will help make this transfer go smoothly.

When a new year starts it holds great promise and possibility, but we can't sit back and wait for things to happen, we must chart our own course!

From my family to yours we wish you a Merry Christmas and a Happy New Year!

Ken Drummond

# Canadian Brown Swiss & Braunvieh Association Annual General Meeting

The Board of Directors has accepted an invitation from the Ontario Club to host the National AGM

Holiday Inn Hotel & Conference Centre  
(across from Stone Road Mall)  
601 Scottsdale Drive, Guelph, Ontario, N1G 3E7

Front Desk: (519) 836-0231  
Toll Free: (877) 660-8550

\* a block of rooms has been reserved at a cost of \$114.99 per night

Monday, March 21                      9:00 a.m. National Board Meeting  
7:00 p.m. Welcome Reception

Tuesday, March 22                    8:30 a.m. Registration for Annual General Meeting  
9:00 a.m. Annual General Meeting  
6:30 p.m. Banquet

Wednesday, March 23                Barn Tours                                      Translation will be available at the AGM

Amendments to the constitution are due to the office by January 22, 2016

## Classification Schedule

January – Early March 2016



### Early January

**ON** – Northern Ontario  
**QC** – Sherbrooke, Compton, Stanstead  
**QC** – mid round: Nicolet, Drummond

### Mid January

**ON** – Thunder Bay, Stormont, Glengarry  
**QC** – Frontenac, Beauce  
**QC** – mid round: Lotbiniere, Yamaska  
**BC** – mid round

### Late January

**ON** – Dundas, Wentworth  
**ON** – mid round: Perth  
**ON** – mid round: Huron  
**QC** – Quebec, Montmorency

### Early February

**ON** – Niagara, Brant, Haldimand, Norfolk, Prescott, Russell  
**ON** – mid round: Leeds, Grenville  
**QC** – Bellechasse, Dorchester, Levis, L'Islet  
**QC** – mid round: Abitibi, Temiscamingue, Deux Montagnes, Terrebonne

### Mid February

**ON** – Carleton  
**ON** – mid round: Renfrew, Lanark, Grey, Bruce  
**QC** – Montmagny, Kamouraska  
**QC** – mid round: Bagot, St. Hyacinthe, Richelieu, Vercheres, Rouville, Labelle, Papineau, Gatineau, Argenteuil, Pontiac  
**AB** – South/Central

### Late February

**QC** – mid round: L'Assomption, Montcalm, Joliette, Bethier, Maskinonge  
**AB** – Northern  
**MB**

### Early March

**ON** – Lambton, Middlesex, Essex & Kent, Elgin  
**ON** – mid round: Halton, York, Peel, Simcoe, Dufferin, Ontario  
**QC** – mid round: St. Maurice, Champlain, Laviolette, Portneuf, Lac St. Jean, Roberval, Lapointe, Dubuc, Charlevoix, Chicoutimi



# CANADIAN BRED WINNERS LES GAGNANTES D'ÉLEVAGE CANADIEN WORLD DAIRY EXPO



*Grand Champion!  
Grande Championne*

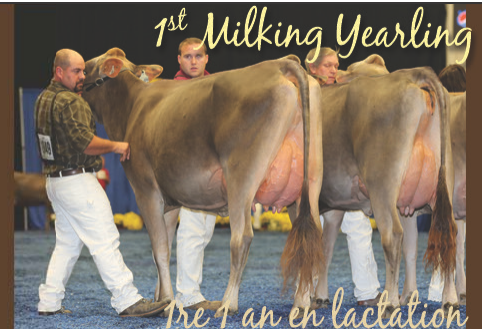
*1<sup>st</sup> 5-Yr-Old  
1<sup>re</sup> 5 ans*

**BROWN HEAVEN GLENN FANTASY VG-89**  
Ferme Brown Heaven, D Rousseau & J & G Charron, QC



CANADIAN  
**Brown Swiss  
& Braunvieh**  
ASSOCIATION

7660 Mill Road, Guelph, Ontario N1H 6J1  
Phone: 519-821-2811 • Fax: 519-763-6582  
Email: brownswiss@eastgen.ca  
Website: browncow.ca



*1<sup>st</sup> Milking Yearling*

*1<sup>re</sup> 1 an en lactation*

**BRADNER JONGEUR PASTIME VG-87-2YR**  
Bradner Farms, Rob & Pat Donaldson & Family, BC



*1<sup>st</sup> Jr. 3-Yr-Old*

*1<sup>re</sup> 3 ans junior*

**NOR BELLA PAUL EVE VG-88-2YR**  
Nor Bella Acres Inc., Troy McConnell, ON



*1<sup>st</sup> Aged Cow*

*1<sup>re</sup> vache adulte*

**ELOC WAGOR KANDID 3E-94-95MS-USA**  
Breeder: Dean Cole, NS Owner: Elite Dairy, NY

*Great cows come in many colours!*

Looking forward to serving you in the New Year!



*La couleur ne définit pas une belle vache!*

Nous sommes impatients de vous servir à la Nouvelle année!







# MONDIAL BRUNE2016 MENDE 6>10 AVRIL

*One breed, a world of opportunities*

LOZERE



10<sup>th</sup> WORLD CONGRESS  
EUROPEAN SHOW  
INTERNATIONAL SALE  
FARM VISITS

[www.brune2016.com](http://www.brune2016.com)



## World Brown Swiss Conference Website Comments

The dairy sector is evolving worldwide. Despite a stronger than before volatility in dairy markets, growth prospects are real in the medium and long term. Consumption of dairy products will increase by 20% in 20 years to come. Many emerging countries are investing in this sector to develop their self-sufficiency, or increase their export potential.

In this new context, we see emerge two distinct trends: firstly a productive farming model of increasing size for a high performance cost control through large volumes, in rather favorable conditions to produce the most competitive manner possible while integrating new environmental, societal constraints (animal welfare, reduction of antibiotic use, etc.).

On the other hand a farming model based on high value-added products, distinguished by superior nutritional, taste, environmental qualities of these. They follow more stringent rules and specifications and can go up to process their products on the farm and sell them directly, allowing it to support a family, to strengthen close ties with consumers and bring vitality to rural territories.

What makes the strength of the Brown Swiss breed is its ability to adapt very well to these two main demands. In each of these situations, its intrinsic qualities are able to make the difference in profitability. The 10th World Congress will be the demonstration and illustration of the Brown answer: presentations at conferences, the planned farms visits, experience feedback with Brown Swiss over the world, as well as the European show will allow you to you get a clearer idea of profit talent of these beautiful Brown cows.

## Cows, Culture & Cuisine V!

Back by popular demand, we will be organizing the 5th installment of Cows, Culture and Cuisine from roughly April 1 to 13. This trip will include the World Brown Swiss Conference in France. Plans are still being made, but will include a visit to Paris with mandatory tourism, numerous farm visits in both France and Switzerland, a visit to a champagne vintner, and of course excellent French and Swiss cuisine!

Interested parties should contact us with an email address to receive additional details and up-dates.



Spaces are somewhat limited, and are available on a first come, first served basis.

Contact:

Dan Gilbert - [dan@brownswiss.com](mailto:dan@brownswiss.com)



## 2015 World Dairy Expo Brown Swiss Show Results

**Grand Champion Female:** Brown Heaven Glenn Fantasy, Ferme Brown Heaven, Vercherers, QC

**Reserve Grand Champion Female:** Top Acres Supreme Wizard-ET, Wayne E Sliker, St. Paris, OH

**Grand Champion Female of the Junior Show:** Cutting Edge T Delilah, Kyle Barton, Ancramdale, NY

**Reserve Grand Champion Female of the Junior Show:** Random Luck B Tea Rose, Allison L Thompson, Darlington, WI

**Premier Breeder:** Random Luck, Darlington, WI

**Premier Exhibitor:** Elite Dairy, Copake, NY

**Premier Sire:** Old Mill WDE Supreme ET

## World Premier Brown Swiss Sale, Thursday, October 1:

The World Premier Brown Swiss Sale had a big draw on Thursday, October 1 at World Dairy Expo. High selling lot was Top Acres HP Peppy Wyza ETV, who sold for \$10,100 to Ken Main and Peter Vail of Copake, N.Y. Her consigner was Wayne E. Sliker and Hillpoint Partners of St. Paris, Ohio. The second highest sale of the evening was Blessing Mort Osborn Penny for \$6,900. She was purchased by Amy and Hadleigh Jones of Glasgow, Ky., and was consigned by Caylee Nicole James of LaGrange, Ind. There were a total of 32 lots in the World Premier Brown Swiss Sale with an average of \$5,400 and total sales reaching \$163,625. Thirteen states and two countries were represented at the 2015 sale.

### Breed Bizz

Tattoo letter for 2016 is D

If you have cattle or embryos for sale please send a list to the office so interested parties requesting this information can be made aware.

Suggestions, comments, stories, jokes, articles that would be of interest in the newsletter are always welcome.

Rates for Placing a Newsletter Ads	
Business Card Ad.	\$25.00
Quarter Page Ad.	\$65.00
Half Page Ad.	\$125.00
Pre-Approved Stuffers	\$250.00



### Association Clothing Available

Please contact the office if you wish to purchase Association clothing. What a great way to promote the breed!

- Golf Shirts - \$40.00
- Long Sleeve Dress Shirts - \$40.00
- Jackets - \$40.00
- Caps - \$12.00

### CONTACT US:

### Canadian Brown Swiss & Braunvieh Association

7660 Mill Rd  
Guelph, ON, N1H 6J1  
Phone: 519-821-2811  
Fax: 519-763-6582





# 2015 Excellents (January - November 2015)



BSCANF8988007	NOR BELLA SUPREME DABBLE	EX	95	4E	NOR BELLA ACRES INC.	ON
BSCANF9695511	GUBELMAN SPECIAL DANISH	EX	95	2E	GUBELMANN BROWN SWISS LTD.	ON
BSUSAF958708	SILVER TOP DY CHARLOTTE	EX	94	2E	FERME BROWN HEAVEN	QC
BSCANF103028952	FRAGANCES CARTOON IZA	EX	93	5E	FERME FRAGANCES ENR	QC
BSCANF105764596	HIRONDELLE EROS MACHA	EX	93	3E	FERME HIRONDELLE SAINTE-HÉLÈNE INC.	QC
BSUSAF957593	OLD MILL AMAZING GRACE	EX	93	3E	BRADNER R FARMS LTD	BC
BSCANF104477178	DAYRY SWISS ZEUS US LUCKY	EX	93	3E	FERME BROWN HEAVEN	QC
BSCANF7962476	BATESDALE DANIEL ROXY	EX	93	3E	BATESDALE FARMS	ON
BSCANF10883139	NOR BELLA SCIPIO REMI	EX	93	2E	NOR BELLA ACRES INC.	ON
BSCANF9695511	GUBELMAN SPECIAL DANISH	EX	93	2E	GUBELMANN BROWN SWISS LTD.	ON
BSCANF9695253	EDENCREST CARTOON LACY ET	EX	93	2E	EDENCREST SWISS	ON
BSCANF7954299	BRADNER TERRIE WONDERMENT ET	EX	93	1E	BRADNER FARMS	BC
BSCANF104346302	GOULAISE WURL TRIOLI	EX	92	4E	FERME GOULAISE INC.	QC
BSCANF104277880	ISIDORE BRINKS KALINDA	EX	92	3E	FERME LEHMANN	QC
BSCANF8987978	CRISIDE PRINCE SUNDOWN	EX	92	3E	CRISIDE FARMS	MB
BSCANF8987975	CRISIDE HEARTBREAKER	EX	92	3E	CRISIDE FARMS	MB
BSCANF105175662	BROWN HEAVEN DANIEL SEXY DALLY	EX	92	2E	FERME BROWN HEAVEN	QC
BSCANF7912909	DUN ROVIN ACRES LEGACY JUDITH	EX	92	2E	GEOFFREY MCCONNELL	ON
BSCANF104878900	GOULAISE SCIPIO UGOLINE	EX	92	2E	FERME GOULAISE INC.	QC
BSCANF105175666	BROWN HEAVEN GRIFFIN TOOTIE	EX	92	2E	FERME BROWN HEAVEN	QC
BSCANF105187225	RENCIE AGIO SUISY	EX	92	2E	FERME RENCIE INC.	QC
BSCANF10883148	NOR BELLA TD ELLIS	EX	92	1E	NOR BELLA ACRES INC.	ON
BSCANF106773279	FRAGANCES SHEBANG CHAKIRA	EX	92	1E	FERME FRAGANCES ENR	QC
BSCANF11014175	GUBELMAN ALIBABA DOMINIC	EX	92	1E	GUBELMANN BROWN SWISS LTD.	ON
BSCANF104911595	SABONO VIGOR LILA	EX	92	1E	FERME SABONO	QC
BSCANF9481237	NOR BELLA BLAZER MEADOW	EX	91	6E	NOR BELLA ACRES INC.	ON
BSCANF102753994	CASTEL PRESTIGE CLARA	EX	91	5E	FERME MCF LECLERC INC.	QC
BSCANF105158025	PAUFERLOU ZEUS URILEE	EX	91	3E	PAUFERLOU INC	QC
BSCANF8987940	CRISIDE SILKIE	EX	91	3E	CRISIDE FARMS	MB
BSCANF106031610	SEROL DEVONTE GRACE	EX	91	2E	FERME SEROL SENC	QC
BSCANF105175654	CASTEL FASTBREAK CHIPITS	EX	91	2E	FERME BROWN HEAVEN	QC
BSCANF10883139	NOR BELLA SCIPIO REMI	EX	91	2E	NOR BELLA ACRES INC.	ON
BSCANF10883141	NOR BELLA CHAMPION DYLAN	EX	91	2E	NOR BELLA ACRES INC.	ON
BSUSAF951155	SUN-MADE GB AGNDA PERSIA ET	EX	91	2E	BRADNER R FARMS LTD	BC
BSCANF106146611	MILEC AGIO MARTHA	EX	91	1E	FERME MCF LECLERC INC.	QC
BSCANF11148593	BRADNER TOOTIE WONDERMENT ET	EX	91	1E	BRADNER FARMS	BC
BSCANF107010634	GOULAISE JONGLEUR LOVER	EX	91	1E	FERME GOULAISE INC.	QC
BSCANF11175953	SWISSLANE WONDERMENT MIA	EX	91	1E	SWISSLANE FARMS	ON
BSCANF9907791	CRISIDE AGENDA MARILYN	EX	91	1E	CRISIDE FARMS	MB
BSCANF11014197	GUBELMAN ALIBABA DELTA	EX	91	1E	GUBELMANN BROWN SWISS LTD.	ON
BSCANF10883141	NOR BELLA CHAMPION DYLAN	EX	91	1E	NOR BELLA ACRES INC.	ON
BSCANF10883163	NOR BELLA SUPREME PEEKABOO	EX	91	1E	NOR BELLA ACRES INC.	ON
BSCANF11014170	GUBELMAN ALIBABA WHISPER	EX	91	1E	GUBELMANN BROWN SWISS LTD.	ON
BSCANF11014201	GUBELMAN ALIBABA ALICE	EX	91	1E	GUBELMANN BROWN SWISS LTD.	ON
BSCANF10883148	NOR BELLA TD ELLIS	EX	91	1E	NOR BELLA ACRES INC.	ON
BSCANF102106704	RENCIE CARTOON PRINCY	EX	90	5E	FERME RENCIE INC.	QC
BSCANF7801501	NORTHEND ROOTER'S GAY	EX	90	5E	BAJEMA	AB



BSCANF9348430	ULOOK PENTACLE KAYLIN	EX	90	5E	BRIAN BRODIE	ON
BSCANF102392045	MOROCCO CHRIS OPALE	EX	90	4E	FERME SABONO	QC
BSCANF8987982	NOR BELLA BLAZER PRESLEY	EX	90	4E	NOR BELLA ACRES INC.	ON
BSCANF103301754	DAYRY SWISS DYNASTY LIBERTY	EX	90	4E	FERME BROWN HEAVEN	QC
BSCANF103966508	HIRONDELLE POWER SURGE JUDY	EX	90	4E	FERME HIRONDELLE SAINTE-HÉLÈNE INC.	QC
BSCANF7962475	MAPLE VISTA GOLDMINE PIXIE	EX	90	4E	BATESDALE FARMS	ON
BSCANF104265174	MILEC ZEUS BEAUTY ET	EX	90	3E	FERME MCF LECLERC INC.	QC
BSCANF8937302	PRINZEN CARTOON REBECCA ET	EX	90	3E	PHILIP & DAVID PRINZEN	ON
BSUSAF956105	BROWNS DEDRAS DUTCHESS	EX	90	3E	BRADNER R FARMS LTD	BC
BSCANF9695459	GUBELMAN PAYOFF WALDI	EX	90	3E	GUBELMANN BROWN SWISS LTD.	ON
BSCANF9549494	SPRING ROSE EVEN SHANIA	EX	90	2E	STEPHEN HENHOEFFER	ON
BSCANF9682260	HAPPY COW TORNADO WILLY	EX	90	2E	CORNELIS VERHOEF	AB
BSCANF9726210	PRINSVILLE DECKER CLOVER	EX	90	2E	PRINSVILLE DAIRY FARMS INC.	ON
BSCANF106157085	BROWN HEAVEN BUTTERSCOTCH	EX	90	2E	FERME BROWN HEAVEN	QC
BSCANF8987966	CRISIDE KOLA	EX	90	2E	CRISIDE FARMS	MB
BSCANF7677890	CRISIDE AMMIE	EX	90	2E	CRISIDE FARMS	MB
BSUSAF68102386	TOP ACRES EXPRESS TAHITI ET	EX	90	2E	BRADNER FARMS	BC
BSCANF9695515	GUBELMAN TD MOCCA	EX	90	2E	GUBELMANN BROWN SWISS LTD.	ON
BSCANF9695518	GUBELMAN VIGOR DANIELLE	EX	90	2E	GUBELMANN BROWN SWISS LTD.	ON
BSCANF104431138	RENCIE CHEVRON PICRON	EX	90	2E	FERME RENCIE INC.	QC
BSCANF7771584	EXCELSIOR BANKER MARVEL ET	EX	90	2E	JOHN G & LOUISE DEELSTRA	ON
BSCANF8988030	NOR BELLA AGENDA SONDRRA ET	EX	90	2E	NOR BELLA ACRES INC.	ON
BSCANF8988036	NOR BELLA BLAZER LOTTO	EX	90	2E	NOR BELLA ACRES INC.	ON
BSCANF9917012	WILLOW WATERS CARTOON KAY	EX	90	2E	DALE PHILLIPS	ON
BSCANF105554156	BRUNABEC TANIA BOREAL	EX	90	2E	FERME BLYVIAN INC.	QC
BSCANF9889675	SIGEL PARKER META	EX	90	2E	MICHAEL & CORDULA INAUEN	ON
BSCANF9809605	DUN ROVIN BRILLIANT PEARL	EX	90	1E	DUN ROVIN ACRES LTD	ON
BSCANF105158037	PAUFERLOU POET WILLOW	EX	90	1E	PAUFERLOU INC	QC
BSCANF11141368	CRISIDE CARTOON SKY	EX	90	1E	CRISIDE FARMS	MB
BSCANF8987974	CRISIDE FASTBREAK TRULOVE	EX	90	1E	CRISIDE FARMS	MB
BSCANF8987951	CRISIDE TURMOIL MACARINA	EX	90	1E	CRISIDE FARMS	MB
BSCANF105618783	MILEC POWER BELLA ET	EX	90	1E	FERME MCF LECLERC INC.	QC
BSCANF10883174	NOR BELLA SENSATION ENERGY ET	EX	90	1E	NOR BELLA ACRES INC.	ON
BSCANF106034916	BARONETS PRUNKI HOLLYANE	EX	90	1E	LÉONARD CHABOT	QC
BSCANF9695513	GUBELMAN VIGOR ANGEL	EX	90	1E	GUBELMANN BROWN SWISS LTD.	ON
BSCANF11014192	GUBELMAN VASIR DOREEN	EX	90	1E	GUBELMANN BROWN SWISS LTD.	ON
BSCANF11014209	GUBELMAN DALLY MORGAN	EX	90	1E	GUBELMANN BROWN SWISS LTD.	ON
BSCANF11014195	GUBELMAN BOUMATIC DARLA	EX	90	1E	GUBELMANN BROWN SWISS LTD.	ON
BSCANF10925923	DUN ROVIN SUPREME BUTTERSCOTCH	EX	90	1E	DUN ROVIN ACRES LTD	ON
BSCANF7934234	BRADNER ASIA CARTOON	EX	90	1E	BRADNER FARMS	BC
BSCANF106157102	BROWN HEAVEN J BUTTERFLY	EX	90	1E	FERME BROWN HEAVEN	QC
BSCANF7954329	BRADNER MSGRANNY WONDERMENT ET	EX	90	1E	BRADNER R FARMS LTD	BC
BSCANF11050814	CLEARCREST ABSOLUTE BLACKIE	EX	90	1E	HAROLD & MARSHA JELINSKI	ON
BSCANF9682260	HAPPY COW TORNADO WILLY	EX	90	1E	CORNELIS VERHOEF	AB
BSCANF106221319	SYLGO AGENDA DORALY	EX	90	1E	FERME SYLGO SENC	QC
BSCANF9597092	ANFIELD JET PILOT ELECTRA ET	EX	90	1E	SWISS DREAM FARM	MB
BSCANF11138642	BATESDALE BEAMER ELAINA	EX	90	1E	BATESDALE FARMS	ON
BSCANF107010648	GOULAISE JONGLEUR LIMOCHE	EX	90	1E	FERME GOULAISE INC.	QC
BSCANF11138640	BATESDALE DANIEL MACEY	EX	90	1E	BATESDALE FARMS	ON
BSCANF105590180	MAPLELEDGE VALDO EARLIE 2	EX	90	1E	JEANNOT & LISE DESHARNAIS	QC
BSCANF104731734	JOLIDAI DANIEL EMMA	EX	90	1E	JEANNOT & LISE DESHARNAIS	QC

BSCANF11202378	CARLETON JAYCEE	EX	90	1E	LEAH RICHARDSON-DEAN	ON
BSCANF9549501	SPRING ROSE AGENDA JULIE	EX	90	1E	STEPHEN HENHOEFFER	ON
BSCANF105508264	GOULAISE GLENN LOGIC 2	EX	90	1E	FERME GOULAISE INC.	QC
BSCANF104911569	SABONO AGENDA MYRTHIL	EX	90	1E	FERME SABONO	QC

## 2015 Very Good Two Year Olds (January - November 2015)

BSCANF11625277	GUBELMAN BROOKINGS DORA ET	VG2	88		GUBELMANN BROWN SWISS LTD.	ON
BSCANF11625268	GUBELMAN PROHUVO DIME	VG2	88		GUBELMANN BROWN SWISS LTD.	ON
BSCANF107363037	BROWN HEAVEN J FANCY ET	VG2	87		FERME BROWN HEAVEN	QC
BSCANF107882241	MILEC WONDERMENT GINA	VG2	87		FERME MCF LECLERC INC.	QC
BSCANF107363031	BROWN HEAVEN THUNDER BETSY	VG2	87		FERME BROWN HEAVEN	QC
BSCANF11014243	GUBELMAN BROOKINGS DOLLY ET	VG2	87		GUBELMANN BROWN SWISS LTD.	ON
BSCANF11014259	GUBELMAN DALLY DOLLAR	VG2	87		GUBELMANN BROWN SWISS LTD.	ON
BSCANF11470396	BATESDALE VIGOR NOËL	VG2	87		BATESDALE FARMS	ON
BSCANF11592770	NOR BELLA PAUL RAINDROP	VG2	87		NOR BELLA ACRES INC.	ON
BSCANF107363019	BROWN HEAVEN MANCHEST FRECKLE	VG2	87		FERME BROWN HEAVEN	QC
BSCANF11371897	MONT PLEASANT ORANGE JOLLY	VG2	87		JOHN THORNBURN	ON
BSCANF11522699	BRADNER JONGEUR PASTIME ET	VG2	87		BRADNER FARMS	BC
BSCANF107363027	BROWN HEAVEN LEGACY JEWEL ET	VG2	87		FERME BROWN HEAVEN	QC
BSCANF11625298	GUBELMAN BROOKINGS DENVER	VG2	86		GUBELMANN BROWN SWISS LTD.	ON
BSCANF11301833	BRADNER TEMPTATION SUNLOVER	VG2	86		BRADNER R FARMS LTD	BC
BSCANF107519683	ARNOLD GLENN SKYFALL ET	VG2	86		SONIA DUMONT, ANTONIN MARCOUX & ILONA OGUAY	QC
BSCANF11625291	GUBELMAN VIGOR DORIS	VG2	86		GUBELMANN BROWN SWISS LTD.	ON
BSCANF107961619	SHADY LANE SWISS BRKNGS ALPHA	VG2	86		BARRIE A & DIANE DRUMMOND	QC
BSCANF108217107	MILEC TRACTION BERLINE ET	VG2	86		FERME MCF LECLERC INC.	QC
BSCANF107780525	LENTRE ROCHE VIGOR FLOWER	VG2	86		FERME BROWN HEAVEN	QC
BSCANF11625269	GUBELMAN BROOKINGS KATIE	VG2	86		GUBELMANN BROWN SWISS LTD.	ON
BSCANF107791169	RENCIE AMARETTO WISTALO	VG2	86		FERME RENCIE INC.	QC
BSUSAF68147664	CUTTING EDGE JET FIONNA ET	VG2	86		FERME BROWN HEAVEN & SWISS DREAM FARM	QC
BSCANF107549718	HIRONDELLE GOLDMINE PACHA	VG2	86		FERME HIRONDELLE SAINTE-HÉLÈNE INC.	QC
BSCANF107882241	MILEC WONDERMENT GINA	VG2	86		FERME MCF LECLERC INC.	QC
BSCANF107094456	SABONO AMARETTO KARLA	VG2	86		FERME SABONO	QC
BSCANF11616853	ELOC BROOKINGS RASCAL	VG2	86		A. DEAN COLE	NS
BSCANF107791168	RENCIE CAFINO SEXTO	VG2	86		FERME RENCIE INC.	QC
BSCANF11437162	DUN ROVIN SUNDOWN BEAUTY	VG2	86		DUN ROVIN ACRES LTD	ON
BSCANF11592761	NOR BELLA SUPREME PALMER ET	VG2	86		NOR BELLA ACRES INC.	ON
BSCANF11522523	BRADNER BROOKINGS PEPERMINT ET	VG2	86		BRADNER R FARMS LTD	BC
BSCANF107938435	ANFIELD THUNDER RAISIN	VG2	86		BROWN HEAVEN & MARKUS MUELLER	QC
BSCANF11700671	CLEARCREST VIGOR DEBRA	VG2	86		HAROLD & MARSHA JELINSKI	ON
BSCANF11625300	GUBELMAN JUHUS ALICIA	VG2	86		GUBELMANN BROWN SWISS LTD.	ON
BSCANF11592766	NOR BELLA PS SANJULA	VG2	86		NOR BELLA ACRES INC.	ON
BSCANF107363022	BROWN HEAVEN ZEUS LOLLY POP	VG2	86		FERME BROWN HEAVEN	QC
BSCANF107363031	BROWN HEAVEN THUNDER BETSY	VG2	86		FERME BROWN HEAVEN	QC
BSCANF107363027	BROWN HEAVEN LEGACY JEWEL ET	VG2	86		FERME BROWN HEAVEN	QC
BSCANF107363018	BROWN HEAVEN LEGACY JOLLY ET	VG2	86		FERME LAROSCO INC.	QC
BSCANF107363023	BROWN HEAVEN VISION BLITZ ET	VG2	86		FERME BROWN HEAVEN	QC
BSCANF107780332	HIBRO BROOKING JOLINE 0332	VG2	86		ROLF HIRT	QC
BSCANF11625268	GUBELMAN PROHUVO DIME	VG2	86		GUBELMANN BROWN SWISS LTD.	ON
BSCANF11789850	FOUR OAK BROOKINGS DROP	VG2	85		FOUR OAK FARMS	MB
BSCANF11625279	GUBELMAN BROOKINGS DELIGHT	VG2	85		GUBELMANN BROWN SWISS LTD.	ON



BSCANF11700680	CLEARCREST VIGOR CARMELA	VG2	85	HAROLD & MARSHA JELINSKI	ON
BSCANF11625281	GUBELMAN ALIBABA CAITLIN	VG2	85	GUBELMANN BROWN SWISS LTD.	ON
BSCANF11625311	GUBELMAN DRIVER BELLE	VG2	85	GUBELMANN BROWN SWISS LTD.	ON
BSCANF11470401	BATESDALE VIGOR STARBURST	VG2	85	BATESDALE FARMS	ON
BSCANF11621286	CRISIDESTRUE HONEY	VG2	85	CRISIDESTRUE FARMS	MB
BSCANF11389465	SOUTHBRAE GOLDMINE ANGEL	VG2	85	FERME JOLIDAI ET FERME CHAMCY INC.	QC
BSCANF107950335	HINSY AMARETTO COCKTAIL	VG2	85	SYLVAIN HINSE	QC
BSCANF11522516	BRADNER BROOKINGS PIXPOCKET ET	VG2	85	BRADNER FARMS	BC
BSCANF11522527	BRADNER RIDE'N THE RIVER ET	VG2	85	BRADNER FARMS	BC
BSCANF11511250	PRINSVILLE ASTEROID COMET	VG2	85	PRINSVILLE DAIRY FARMS INC.	ON
BSUSAF68149234	V B HP WON MARVELOUS ET	VG2	85	CASEY MOREY & MIKE HELLENBRAND	AB
BSCANF11592764	NOR BELLA GALAXY SHAN	VG2	85	NOR BELLA ACRES INC.	ON
BSCANF11592765	NOR BELLA PAUL SAREE	VG2	85	NOR BELLA ACRES INC.	ON
BSCANF11604168	SWISSLANE VIGOR KEZIA	VG2	85	SWISSLANE FARMS	ON
BSCANF107882250	CASTEL DYNASTY LEONA ET	VG2	85	FERME MCF LECLERC INC.	QC
BSCANF11282426	SIGEL CAFINO MUKI	VG2	85	MICHAEL & CORDULA INAUEN	ON
BSCANF11686113	KEVIOTT ACRES MOTOWN ANGELINA	VG2	85	KEVIN ELLIOTT	ON
BSCANF108009728	BARONETS JONGLEUR URBY	VG2	85	LÉONARD CHABOT	QC
BSCANF107114219	VIBERT DRAGON SEVENUP	VG2	85	VICKY PLANTE	QC
BSCANF11460467	SWISS KINE WURL MASSINA	VG2	85	CLARENCE DOERKSEN	MB
BSCANF11175577	EASTWIND VIGOR DELIA	VG2	85	SARA LOOS	ON
BSCANF107559396	DESCHÉNOISE MANCHESTER PERLE	VG2	85	KATHERINE DESCHÉNES	QC
BSCANF107965579	JOLIDAI CAFINO NIBA	VG2	85	JEANNOT & LISE DESHARNAIS	QC
BSCANF107910434	NOTERRA BROOKINGS TOURMALINE	VG2	85	ÉLISE SAWYER	QC
BSCANF11437158	DUN ROVIN SUNDOWN CIERRA	VG2	85	BAILEY & ASHLEY MCCONNELL	ON
BSCANF11282420	SIGEL DALLY CIARA	VG2	85	MICHAEL & CORDULA INAUEN	ON
BSCANF11470402	BATESDALE THUNDER MARY JANE	VG2	85	BATESDALE FARMS	ON
BSCANF11592768	NOR BELLA PAUL RAINBOW	VG2	85	NOR BELLA ACRES INC.	ON
BSCANF107882245	MILEC BROOKINGS BARBIE	VG2	85	FERME MCF LECLERC INC.	QC
BSCANF108009713	BARONETS AMARETTO ETZEL	VG2	85	LÉONARD CHABOT	QC
BSCANF107363025	BROWN HEAVEN LEBRON LUCKY GIRL	VG2	85	FERME BROWN HEAVEN	QC
BSCANF11437168	DUN ROVIN BROOKINGS LATTE	VG2	85	BAILEY & ASHLEY MCCONNELL	ON
BSCANF107363041	BROWN HEAVEN MANDEL DELICIOUS	VG2	85	FERME BROWN HEAVEN	QC
BSCANF108004019	GOULAISE VIGOR RADY ET	VG2	85	FERME GOULAISE INC.	QC
BSCANF11242017	FOUR OAK WONDER ECLAIR	VG2	85	FOUR OAK FARMS	MB
BSCANF107119743	PICHET AMARETTO LADY GAGA	VG2	85	FERME F.X. PICHET INC.	QC
BSCANF107993619	BRITANNIA JONES MENDA	VG2	85	FERME BRITANNIA SENC	QC
BSCANF11437163	DUN ROVIN SUNDOWN BROOKLYN	VG2	85	DUN ROVIN ACRES LTD	ON
BSCANF107686359	ANSE AU PERSIL ZIVA GRANDSLAM	VG2	85	NICOLAS CARON	QC
BSCANF11014257	GUBELMAN DALLY ALEXIA	VG2	85	GUBELMANN BROWN SWISS LTD.	ON
BSCANF11625267	GUBELMAN DALLY BESSY	VG2	85	GUBELMANN BROWN SWISS LTD.	ON
BSCANF11470393	BATESDALE GALAXY HALO	VG2	85	BATESDALE FARMS	ON
BSCANF11625298	GUBELMAN BROOKINGS DENVER	VG2	85	GUBELMANN BROWN SWISS LTD.	ON
BSCANF11592771	NOR BELLA PAUL DEP	VG2	85	NOR BELLA ACRES INC.	ON
BSCANF11592767	NOR BELLA JETWAY SAPPHIRE	VG2	85	NOR BELLA ACRES INC.	ON
BSCANF11592774	NOR BELLA JONGLEUR PAZAZZ ET	VG2	85	NOR BELLA ACRES INC.	ON
BSCANF11700679	CLEARCREST PROMOTION RENATE	VG2	85	HAROLD & MARSHA JELINSKI	ON
BSCANF108051660	VERONAMOUR BELLA FERRARI	VG2	85	LES ÉLEVAGES CÉLESTAR INC.	QC
BSCANF107108626	SCHWEIZER JOEL OLGA	VG2	85	LA FERME HANS ENR.	QC
BSCANF108009733	BARONETS JONGLEUR ERINE	VG2	85	LÉONARD CHABOT	QC
BSCANF107938416	ANFIELD RAVEN MONICA JANE	VG2	85	MARKUS MUELLER & SWISS DREAM FARM	QC
BSCANF108004063	GOULAISE BROOKINGS AMANDE	VG2	85	FERME GOULAISE INC.	QC





Production Records (January - August 2015) Ranked by Composite Milk, Fat, Protein

6	BSCANF11014172	GUBELMAN DASHER DEVA	PB	VG	86	3	10	12483	557	4.5	446	3.6	305	340	312	957	ERNST GUBELMANN	ON
7	BSCANF11177629	ROBIN NEST CARTOON BLITZ	PB	GP	81	3	6	11464	518	4.5	418	3.6	303	339	314	956	OSCAR BOWMAN	ON
8	BSCANF11175944	SWISSLANE ALIBABA MEA	93	GP	83	3	7	11779	493	4.2	390	3.3	304	316	287	907	SWISSLANE FARMS	ON
9	BSCANF11175947	SWISSLANE WURL LOT	87	GP	83	3	6	11228	469	4.2	391	3.5	294	305	292	891	SWISSLANE FARMS	ON
10	BSCANF11014189	GUBELMAN ALIBABA KYLIE	PB	VG	87	3	6	11129	477	4.3	389	3.5	289	306	288	883	GUBELMANN BROWN SWISS LTD.	ON
4Yr Old																		
1	BSCANF11014183	GUBELMAN JUHUS DAZZEL	PB	VG	87	4	1	14844	595	4.0	518	3.5	365	363	365	1093	GUBELMANN BROWN SWISS LTD.	ON
2	BSCANF11014175	GUBELMAN ALIBABA DOMINIC	PB	EX	92	4	1	13700	598	4.4	507	3.7	346	376	367	1089	GUBELMANN BROWN SWISS LTD.	ON
3	BSCANF106277052	DAYRY SWISS JONGLEUR PEKA	PB	VG	87	4	0	13418	594	4.4	481	3.6	341	376	349	1066	DAVE, DANY & YVAN ROUSSEAU	QC
4	BSCANF9695511	GUBELMAN SPECIAL DANISH	PB	EX	95	4	7	15007	623	4.2	525	3.5	347	362	345	1054	GUBELMANN BROWN SWISS LTD.	ON
5	BSCANF10925912	DUN ROVIN WONDERMENT LAUNA	PB	VG	88	4	0	12329	586	4.8	434	3.5	310	366	312	988	DUN ROVIN ACRES LTD	ON
6	BSCANF9695498	GUBELMAN DEREK LOLA	PB	VG	88	4	10	13381	560	4.2	503	3.8	305	322	327	954	GUBELMANN BROWN SWISS LTD.	ON
7	BSCANF105618783	MILEC POWER BELLA ET ET	PB	EX	90	4	10	13256	530	4.0	440	3.3	319	319	303	941	FERME MCF LECLERC INC.	QC
8	BSCANF106146611	MILEC AGIO MARTHA	PB	EX	91	4	4	12300	537	4.4	417	3.4	307	334	298	939	FERME MCF LECLERC INC.	QC
9	BSCANF11014164	GUBELMAN GLENNI LESLIE	PB	EX	90	4	5	11672	519	4.5	442	3.8	290	320	313	923	GUBELMANN BROWN SWISS LTD.	ON
10	BSCANF106580524	SEROL DASHER CASSILIA	PB	GP	82	4	2	12013	482	4.0	433	3.6	302	301	312	915	FERME SEROLL SENC	QC
5Yr Old																		
1	BSCANF9779232	SWISSLANE SCIPPIO MIIA	75	EX	92	5	7	16562	621	3.8	550	3.3	383	361	364	1108	SWISSLANE FARMS	ON
2	BSCANF9695500	GUBELMAN WAGOR DAIRYMAID ET ET	PB	GP	84	5	5	14978	610	4.1	530	3.5	357	363	361	1081	GUBELMANN BROWN SWISS LTD.	ON
3	BSCANF9695453	GUBELMAN VIGOR DONNA	PB	VG	88	5	7	14062	618	4.4	492	3.5	325	355	324	1004	GUBELMANN BROWN SWISS LTD.	ON
4	BSCANF9941394	SWISSLANE WAGOR OLLAS	87	GP	81	5	9	13945	562	4.0	471	3.4	311	312	300	923	SWISSLANE FARMS	ON
5	BSCANF9695491	GUBELMAN AGENDA JANE 2	PB	EX	90	5	3	12739	562	4.4	460	3.6	289	321	299	909	GUBELMANN BROWN SWISS LTD.	ON
6	BSCANF9809630	DUN ROVIN MARAUDER BLUEBERRY	PB	F	68	5	4	12023	551	4.6	437	3.6	285	328	295	908	DUN ROVIN ACRES LTD	ON
7	BSCANF9649483	CLEARCREST WAGOR VICTORIA	75	GP	80	5	1	12790	524	4.1	443	3.5	300	306	297	903	HAROLD & MARSHA JELINSKI	ON
8	BSCANF105175666	BROWN HEAVEN GRIFFIN TOOTIE	PB	EX	92	5	5	12163	611	5.0	436	3.6	271	339	278	888	FERME BROWN HEAVEN	QC
9	BSCANF9695513	GUBELMAN VIGOR ANGEL	PB	EX	90	5	3	13003	529	4.1	458	3.5	291	296	292	879	GUBELMANN BROWN SWISS LTD.	ON
10	BSCANF9950415	EASTWIND WAGOR STELLA	PB	VG	86	5	8	12696	585	4.6	436	3.4	277	323	273	873	HEIDI & WALTER VON AH	ON
Mature Cow																		
1	BSCANF8988007	NOR BELLA SUPREME DABBLE	PB	EX	95	7	2	17067	737	4.3	582	3.4	399	436	388	1223	NOR BELLA ACRES INC.	ON
2	BSCANF105082371	JOLIDAI AGIO BRITAL ET ET	PB	GP	81	6	4	16823	705	4.2	589	3.5	394	415	393	1202	JEANNOT & LISE DESHARNAIS	QC
3	BSCANF7855573	GUBELMAN DRAFT DEANA	PB	EX	90	6	10	16422	701	4.3	561	3.4	357	383	348	1088	GUBELMANN BROWN SWISS LTD.	ON
4	BSUSAF947892	NUTMEG ACRES JETWAY TIDBIT	PB	EX	92	8	8	13645	605	4.4	484	3.5	318	360	323	1001	FERME BROWN HEAVEN	QC
5	BSCANF104477178	DAYRY SWISS ZEUS US LUCKY	PB	EX	93	6	3	13978	622	4.5	505	3.6	316	353	326	995	FERME BROWN HEAVEN	QC
6	BSCANF7818389	BROWNSTAR JOLT MOLCCA	PB	EX	90	7	8	14543	604	4.2	442	3.0	329	345	285	959	MARCO PFISTER	ON
7	BSCANF102753994	CASTEL PRESTIGE CLARA	93	EX	91	8	6	12144	538	4.4	431	3.5	283	318	287	888	FERME MCF LECLERC INC.	QC
8	BSCANF105082366	JOLIDAI DANIEL SWEET	87	VG	86	6	7	12979	516	4.0	448	3.5	294	293	291	878	JEANNOT & LISE DESHARNAIS	QC
9	BSCANF8968585	EASTWIND CARTOON JOSEE	PB	VG	85	6	7	12160	533	4.4	428	3.5	282	312	283	877	HEIDI & WALTER VON AH	ON
10	BSCANF9809605	DUN ROVIN BRILLIANT PEARL	PB	EX	90	6	3	11891	505	4.2	439	3.7	280	299	295	874	DUN ROVIN ACRES LTD	ON
Aged Cow																		
1	BSCANF8860482	EXCELSIOR CARTOON PONY	PB	VG	85	10	0	9695	423	4.4	320	3.3	222	247	209	678	JOHN G & LOUISE DEELSTRA	ON
2	BSCANF8295438	LOR PAT PREVIEW TRUDANCE	PB	VG	87	11	8	9934	367	3.7	307	3.1	233	220	215	678	HENDRIKUS ZOMER	SK
3	BSCANF8824043	CRIKSIDE PAMMY	PB	EX	90	11	3	9469	345	3.6	285	3.0	222	208	206	659	CRIKSIDE FARMS	MB
4	BSCANF9481201	NOR BELLA TALISMAN LINDSAY	PB	EX	90	10	3	9179	380	4.1	315	3.4	203	217	199	621	NOR BELLA ACRES INC.	ON
5	BSCANF8824022	CRIKSIDE LINEN	PB	EX	90	10	3	9179	380	4.1	315	3.4	203	217	199	621	CRIKSIDE FARMS	MB
6	BSCANF101490883	ISIDORE TRADEMARK ALBI	PB	GP	83	11	4	8513	326	3.8	284	3.3	207	204	197	608	FERME LEHMANN	QC
7	BSCANF8832818	STEELDEL CARTOON CATI	PB	VG	88	10	8	7565	306	4.0	284	3.8	182	190	196	568	MICHAEL & CORDULA INAUEN	ON
8	BSCANF100245577	FRAGANCES VALIANT TORREN	PB	VG	88	11	7	8096	374	4.6	277	3.4	179	214	175	568	FERME FRAGANCES ENR ET FRANCE	QC
9	BSCANF8646311	CRIKSIDE TRUDAWN	PB	EX	93	13	6	6595	266	4.0	212	3.2	153	161	140	454	OUELLET CRIKSIDE FARMS	MB
10	BSCANF8379820	ELISCHWAND MICHEALA	93	GP	84	12	5	5490	200	3.6	182	3.3	130	121	124	375	DUANE R. SWARTZENTRUBER	ON



**Taureaux Brown Swiss Bulls**

Newly Proven Bulls by LPI		Top 5 LPI Bulls		Bulls with Biggest LPI Change		Sires of Top 25 LPI Bulls (Average LPI)			
Nouvellement Éprouvés selon IPV		5 Meilleurs selon l'IPV		Taureaux avec changement d'IPV important		Pères des 25 Meilleurs (Moyenne d'IPV)			
30 VICTORY	VIGOR	1208	1 BROOKINGS	+ 1711	PROHUVO	+142	1333	ZEUS	12% 1485
44 JONES	EMERGENCY	1104	2 GLENN	+ 1654				PRESIDENT	8% 1592
71 ASTEROID	WONDERMENT	933	3 MILLENIUM	+ 1644				PAYOFF	8% 1517
			4 ZEUS	+ 1634				VIGOR	8% 1373
			5 ALTARANSOM	- 1631					
Milk / Lait (kg)		Fat / Gras (kg)		Protein / Protéine (kg)		Conformation			
1 ALTARANSOM	+ 1305	1 POET	- 38	1 WAGOR	0	34	1 SUPREME	0	14
2 JAMARR	- 876	1 LESTER	+ 38	2 POET	-	31	2 GLENN	0	13
3 CAFINO	+ 773	3 WAGOR	- 35	3 PAYOFF	-	30	2 JONGLEUR	+	13
4 WONDERMENT	+ 767	4 CAFINO	+ 33	4 GLENN	+	29	4 WONDERMENT	+	11
5 POLLYDEN	+ 718	5 DALLAS	0	4 ALTARANSOM	0	29	5 BROOKINGS	0	10
						28	5 AGENDA	0	10
						28	5 SHEBANG	0	10
							5 TURMOIL	0	10

**Genotyped Brown Swiss Cows/Vaches Suisse Brune Génotypées**

Top 5 GLPI Cows		Sires of Top 400 GLPI Cows		Dams of Top 400 GLPI Cows		New Top GLPI Cows			
5 Meilleures Vaches selon l'IPVG		Pères des 400 Meilleures selon l'IPVG		Mères des 400 Meilleures selon l'IPVG		Meilleures Nouvelles Vaches selon l'IPVG			
1 GUBELMAN JUHUS CRYSTAL	- 2038	BROOKINGS	4.00% 1423	PAUFERLOU WURL-STORA	7	2 SHADY LANE SWISS BRKNGS ALPHA	1991		
2 SHADY LANE SWISS BRKNGS ALPHA	N 1991	WONDERMENT	3.50% 1022	MILEC ZEUS BEAUTY ET	6	5 GUBELMAN BROOKINGS DINA	1781		
3 GUBELMAN BROOKINGS CLAIRE	+ 1896	GLENN	2.50% 1532	ELM PARK COGNAC 'N' AMARETO	5	23 ANFIELD VIGOR FLORA VIX ET	1534		
4 GUBELMAN JUHUS DAZZEL	- 1789	VIGOR	2.25% 1248	SHADY LANE SWISS DOM ALLERO ET	5	24 SCHWEIZER BROOKINGS AGATHE	1533		
5 GUBELMAN BROOKINGS DINA	N 1781	SHEBANG	2.00% 1126	CASTEL PRESTIGE CLARA	4	27 MILEC TRACTION BEST ET	1499		
Milk / Lait (kg)		Fat / Gras (kg)		Protein / Protéine (kg)		Conformation			
1 SIMMABEC RANSOM BANNIÈRE	+ 1483	1 GUBELMAN JUHUS CRYSTAL	- 62	1 GUBELMAN JUHUS CRYSTAL	-	50	1 BROWN HEAVEN GLENN FANTASY	+	17
2 SCHWEIZER CAFINO PENELOPE	N 989	2 PAUFERLOU TD SELMA	- 54	1 GUBELMAN JUHUS DAZZEL	-	50	1 BROWN HEAVEN J FANCY ET	N	17
3 GUBELMAN JUHUS DAZZEL	- 955	3 PAUFERLOU WURL-STORA	- 46	3 GUBELMAN DASHER MADAME	+	41	3 SHADY LANE SWISS SUP ALLRIGHT	0	16
4 PAUFERLOU TD SELMA	+ 935	4 REYLA POET SAHARA	- 45	4 SCHWEIZER CAFINO PENELOPE	N	40	3 PAUFERLOU GLENN SENIA ET	+	16
5 SHADY LANE SWISS HJ B PEPRMINT	+ 895	5 GUBELMAN JUHUS DAZZEL	- 41	5 SHADY LANE SWISS BRKNGS ALPHA	N	35	3 PAUFERLOU JONGLEUR SLOVA	+	16
		5 SCHWEIZER TD COOKIE	- 41						



CANADIAN DAIRY NETWORK (CDN) RESEAU LAITIER CANADIEN

TOP 100 FOREIGN BULLS BY MLPI (MEETING MINIMUM RELIABILITIES)  
100 MEILLEURS TAUREAUX A L'ETRANGER SELON L'IPVM (CONFORME AU MINIMUM DE LA FIABILITE)

BREED/RACE: BROWN SWISS

MLPI IPVM	CNTRY PAYS	GENOMIC GENOMIQUE	NUMBER NUMERO	NAME NOM	BIRTH NAISS	SEMEN CODE INT'L	CODE INT'L	CONT CONT	DAUS FILLES	HERDS TROUP	REL FIAB	MILK LAIT	FAT GRAS	PROT PROT	FAT% %GRAS	PROT% %PROT	REL FIAB	CONF CONF	MS SM	FL PM	DS PL	SCS CCS	HL DV
2482	DEA	G	DEU814660364	VASSILI	2010			261	158	80	1827	84	65	0.08	-0.01	71	6	6	2	5	2.80	108	
2294	DEA	G	DEU935830301	HURAY	2009	0504BS00052	0504	20642	7290	95	1624	63	64	-0.06	0.06	94	1	1	5	0	2.92	111	
2291	DEA	G	DEU943159317	HARLEY	2002			378	304	80	1810	61	74	-0.17	0.10	69	-1	-2	1	-3	2.87	107	
2251	USA	G	USA196826	HILLTOP ACRES H DRIVER ET	*TM 2003	0014BS00314	0014	716	277	87	1169	68	62	0.22	0.23	82	-2	0	-4	-3	2.79	110	
2247	DEA	G	DEU944387691	JUKEBOX	2010			41	39	70	339	52	42	0.46	0.34	61	-2	3	2	-4	2.66	111	
2235	DEA	G	DEU944346439	VANPARI	2010			242	199	79	1156	60	57	0.13	0.18	69	1	2	-1	-2	2.63	111	
2144	DEA	G	DEU942089722	HACKER	2008	0504BS00056	0504	76	608	76	1275	38	44	-0.18	-0.02	65	1	1	8	-4	2.70	114	
2139	DEA	G	DEU814252837	HULK	2009			105	80	75	1441	49	49	-0.14	-0.03	63	1	2	2	0	2.83	111	
2107	CHE	G	ITA10990008842	LAVAGE ZEUS VINO ZEPHIR	2007			153	136	80	541	53	53	0.36	0.41	77	0	2	2	-5	2.76	106	
2097	DEA	G	DEU936432728	JUHUS	2003			3913	2305	91	209	69	48	0.73	0.48	86	-5	-3	2	-4	2.48	105	
2085	DEA	G	DEU942606868	HAJO	2009			64	59	75	1327	51	53	-0.06	0.06	65	1	1	8	3	2.72	109	
2063	ITA	G	ITA25990005094	HURA PAT HAVOC *TM *TA	2010			24	21	67	1089	61	49	0.18	0.12	65	-3	1	-3	-6		111	
2052	DEA	G	DEU814159177	HURETVEI	2009			55	46	75	1891	68	60	-0.13	-0.09	67	-1	-3	0	1	3.06	108	
2045	DEA	G	DEU936949086	VASIR	2003	0504BS00053	0504	13520	5260	94	1495	78	56	0.18	0.03	92	1	-2	0	2	2.86	102	
2043	DEA	G	AUT432006317	GS HARDING	2009			73	50	73	1295	52	60	-0.03	0.16	65	3	3	0	1	3.02	107	
2041	DEA	G	DEU813034326	PAYSSLI ET	2005	0504BS00051	0504	6310	3090	86	864	32	37	-0.05	0.07	85	9	9	7	4	2.77	109	
2036	DEA	G	DEU944387694	VARIANT	2010			53	51	72	1397	63	50	0.05	0.00	64	-1	-1	-2	-1	2.80	106	
2033	DEA	G	DEU944547108	JUSAR	2010			71	64	77	339	69	38	0.66	0.00	68	-5	-4	4	-3	2.50	109	
2027	DEA	G	DEU943138078	PUCK	2009			197	165	76	1243	43	48	-0.11	0.30	64	2	5	-1	1	2.86	111	
2023	DEA	G	DEU944389615	VERSELIO	2010			62	58	72	748	68	48	0.44	0.25	65	1	3	-1	-2	2.79	107	
2021	DEA	G	DEU944704710	VALETTA	2009			59	53	75	930	72	48	0.39	0.17	66	-1	-3	5	0	2.88	102	
2018	CHE	G	CHE120083025164	SCHÄRZ BS VIGOR ANIBAL ET	2009	0196BS17394	2138	134	125	80	613	33	37	0.08	0.18	78	13	12	9	4	2.72	110	
2006	DEA	G	DEU943159309	HARDROCK *TM	2009			38	66	77	975	50	44	0.11	0.11	67	-3	-3	0	1	2.58	110	
2005	CHE	G	CHE120093223727	KREUZERHEVER BS DONJUAN-ET	2010			38	36	70	588	45	44	0.24	0.27	68	9	10	3	6	2.58	104	
1995	CHE	G	CHE120076827089	DIETHELM'S GLENN GUSTI-ET	2009	0196BS17348	0200	108	92	79	975	57	51	0.19	0.19	77	10	4	2	5	3.17	102	
1974	CHE	G	CHE120083025201	SCHÄL203ÄPRZ BS HURAY ARIRI	2009			48	45	71	924	59	45	0.25	0.15	68	-3	-1	3	-5	2.98	108	
1962	CHE	G	CHE120082568808	SCHERMA GLENN BLOOMING ET	2010	0196BS17784		1389	930	81	479	19	41	-0.02	0.30	79	20	15	11	7	3.01	105	
1960	DEA	G	DEU941920045	HEGALL	2008			505	381	79	1122	69	57	0.25	0.19	65	-3	0	-2	-1	2.81	102	
1954	DEA	G	AUT479716317	GS HIGHWAY	2010			172	124	75	1201	41	44	-0.11	0.01	65	1	6	2	-4	2.95	111	
1941	DEA	G	DEU942113967	HOPRO *TM	2008			72	63	77	598	22	28	-0.04	0.08	65	3	3	7	-2	2.92	115	
1936	DEA	G	AUT353623317	HALLELUJA	2009			81	73	76	939	32	51	-0.09	0.20	67	5	3	6	3	2.87	108	
1931	DEA	G	DEU944865345	JUSCH	2010			83	77	75	432	48	44	0.37	0.34	64	0	0	4	1	2.76	103	
1921	DEA	G	DEU943460337	GS HIEFLAU	2009			106	85	78	1132	52	60	0.04	0.03	67	-3	-7	2	1	2.82	106	
1920	FRA	G	FRA1210142097	ENZO	2009			34	29	73	1232	60	42	0.09	-0.03	69	4	4	1	2	2.76	103	
1914	DEA	G	DEU943841514	HARISSA	2009			73	61	75	848	45	31	0.12	0.02	64	6	5	7	4	3.04	107	
1902	DEA	G	DEU942953733	HAIFA	2008			77	74	75	829	56	45	0.26	0.19	63	-4	-2	0	-3	2.88	103	
1899	ITA	G	ITA24990239569	SUPERBROWN CA MASCARI NOEL *TM	2009	0212BS00455	0212	87	82	75	543	20	34	-0.03	0.18	71	8	8	7	1	2.66	111	
1890	DEA	G	DEU945299745	ESCALA	2010			30	30	75	857	54	38	0.21	0.08	70	-3	-1	4	-1	2.98	105	
1875	DEA	G	DEU944870461	JULAU ET	2010			183	149	76	801	31	42	-0.03	0.15	66	0	4	-1	0	2.88	109	
1874	DEA	G	AUT309255517	HANK *TM	2010			149	131	76	908	37	36	-0.01	0.04	65	0	0	3	-2	2.88	111	
1873	DEA	G	DEU942620106	HAVANNA *TM	2008			93	86	77	1198	64	44	0.15	0.02	65	-3	-4	3	-1	2.92	107	
1873	DEA	G	DEU813384234	PATRIOT	2005			404	321	80	758	28	43	-0.05	0.19	70	2	6	0	3	3.01	103	
1870	ITA	G	ITA73990116161	SUPERBROWN VIVID *TM *TA	2010	0212BS00481	0212	55	48	71	1216	36	41	-0.19	-0.04	68	7	6	3	4	2.90	108	
1870	DEA	G	DEU814462607	VIFP	2010			296	186	78	448	24	27	0.07	0.12	68	8	12	1	0	2.72	110	
1869	DEA	G	DEU939830728	PAYBOY *TM	2005			864	603	80	801	33	36	-0.01	0.09	69	5	8	2	2	2.81	104	
1864	DEA	G	DEU944789207	JULIUS	2010			36	35	67	731	46	48	0.17	0.24	60	-5	-4	0	-3	2.52	106	
1856	CHE	G	CHE120064785308	R.B. JENS VALENTINO *TM	2008			161	123	80	1186	61	49	0.13	0.08	77	0	-1	3	3	2.84	100	
1856	DEA	G	DEU942968653	HARLEM *TM	2009			115	106	78	1034	49	38	0.06	0.01	68	-3	1	-3	-4	2.69	105	
1854	DEA	G	DEU943847570	VERONA	2010			76	66	75	949	59	45	0.22	0.13	65	0	-3	1	3	2.97	106	
1848	DEA	G	DEU813323063	MODEST	2005	0504BS00055	0504	102	87	79	1451	44	53	-0.20	0.01	69	-8	-7	-4	-4	2.86	109	



TOP 25 BROWN SWISS BULLS BY LPI  
25 MEILLEURS TAUREAUX SUISSE BRUNE SELON L'IPV

DECEMBER / DÉCEMBRE 2015

RANK	LPI	TC	SEMIN CODE	REGISTRATION	GS	NAME	HERDS	DAUS	TDR	REL	MILK	FAT	%RK	PROT	%RC	%FAT	%GRAS	%PROT	CONF	%RK	MS	F&L	DS	RP	HL	SCS	PERS	DF	MSP	MT	CA	DCA	BCC
RANG	IPV	CT	CODE DE SEMENCE	ENREGISTREMENT	SG	NOM	TROUP	FILLES	RJT	FIAB	LAIT	GRAS	%RC	PROT	%RC	%GRAS	%GRAS	%PROT	CONF	%RK	SM	P&M	PL	Cr	DV	CCS	PERS	FF	VT	AV	AV	CCC	
1	1711	D	0054BS00438	USA 198772	G	R N R PAYOFF BROOKINGS ET *TM	45	111	635	92	479	88	16	80	26	92	-0.05	0.08	10	97	8	9	6	12	105	2.73	101	105	100	99	109	109	107
2	1654	D	0196BS13322	CHE 120023664460	G	SCHAMAUN BS GORDON GLENN ET	19	32	508	94	306	78	28	88	29	97	0.18	0.20	13	99	8	5	10	12	103	3.12	86	104	100	101	94	105	106
3	1644	D	0200BS00002	USA 199360	G	OLSON MILLENIUM ET	30	47	770	88	547	90	27	88	25	92	0.05	0.04	2	62	7	-1	-4	-4	108	2.88	99	103	107	97	104	108	91
4	1634	I	0196BS10295	CHE 110121201483	G	PETERS*TOP ZOLDO ZEUS	41	77	1209	97	436	88	19	83	22	88	0.00	0.06	1	57	5	-3	-8	4	108	2.79	95	107	106	97	108	110	100
5	1631	I	0011BS00603	CAN 39421	G	BLESSING PROPHET RANSOM	27	54	973	90	1305	99	26	88	29	97	-0.32	-0.22	-1	42	0	11	-3	-10	114	3.08	102	104	105	93	103	105	100
6	1609	I	0196BS13193	CHE 120033040506	G	SCHARZ BS PRESID ALIBABA *TM	39	93	1107	93	218	71	20	83	25	92	0.13	0.19	0	48	1	2	-5	1	108	2.86	111	105	107	106	99	106	92
7	1574	I	0054BS00374	USA 196618	G	SUN-MADE VIGOR ET	88	290	3548	98	202	69	0	59	13	69	-0.10	0.06	7	91	9	6	1	0	112	2.66	105	105	103	105	98	100	97
8	1538	I	0029BS03812	USA 68115207	G	COZY NOOK W MANCHESTER	12	24	154	80	688	97	28	88	21	80	-0.02	-0.06	8	92	8	9	7	2	106	2.89	101	99	98	105	99	99	97
9	1529	I	0007BS00818	USA 199070	G	OLSONS MEL ZEUS MOTOWN ET	12	34	437	86	121	54	25	85	9	66	0.24	0.04	5	84	6	4	0	0	107	2.77	95	105	105	101	104	107	96
10	1493	I	0014BS00288	USA 193627	G	TRIANGLE ACRES PO PAYOFF ET	32	73	1115	96	692	97	14	78	30	99	-0.17	0.05	2	62	3	6	0	4	99	2.89	97	106	103	95	102	109	100
11	1472	D	0200BS00410	CAN 104235621	G	TRIANGLE ACRES POET ET	29	42	634	88	295	78	38	99	31	99	0.30	0.22	-2	33	1	-4	0	-6	98	3.01	100	108	100	98	94	101	105
12	1438	I	0196BS11288	CHE 6581270	G	HANNY SWISS ACE WAGOR *TM	44	93	1293	95	575	90	35	97	34	99	0.13	0.13	2	62	6	-4	-3	5	96	3.03	100	99	100	102	109	104	101
13	1426	D	0206BS00019	ITA 180295	G	PAEZZA DENNI EARN SCPIO ET	41	84	1334	95	127	59	28	88	18	76	0.26	0.15	3	71	5	0	-2	2	106	2.90	101	95	106	106	101	101	106
14	1417	D	0200BS00301	CAN 7855696	G	GUBELMAN VIGOR DASHER ET	37	45	676	88	118	54	5	69	28	95	0.01	0.26	4	77	6	0	-2	1	105	2.78	103	100	94	103	98	101	111
15	1368	D	0007BS00796	USA 197920	G	OLD MILL WIDE SUPREME ET	28	76	1120	93	-28	45	-2	54	-1	45	-0.01	0.00	14	99	11	12	12	10	106	2.88	101	100	108	94	84	105	99
16	1339	I	0076BS00900	CAN 35206	G	VICTORY ACRES SIMON EVEN ET	15	26	358	95	-142	38	5	69	8	61	0.13	0.17	-1	42	2	-1	-3	-5	108	2.46	102	102	103	95	103	101	99
17	1335	D	0200BS00302	CAN 9695540	G	GUBELMAN GLENN LESTER	26	37	391	84	268	78	38	99	20	76	0.31	0.11	6	87	2	4	8	5	99	3.27	95	102	100	110	96	102	107
18	1333	D	0200BS00293	DEU 938542953	G	PROHUVO	7	16	148	78	-299	30	19	83	5	52	0.39	0.19	-2	33	-1	3	-5	3	106	3.05	100	110	101	97	100	108	108
19	1328	D	0200BS00113	USA 68111500	G	OLSONS MACYS VIGOR MAC	28	30	291	82	-33	45	1	64	-1	45	0.02	0.00	8	92	9	9	1	0	108	2.71	104	100	106	102	102	101	100
20	1325	D	0138BS00304	USA 196457	G	KRUSES BIG T FASTBREAK ET	11	33	506	86	-269	33	1	64	6	57	0.15	0.17	8	92	7	2	7	13	107	2.87	96	102	99	101	100	102	96
21	1322	D	0200BS00760	ITA 4899028036	G	MIR PAYUS *TW*TM	23	36	320	82	31	49	18	83	17	76	0.21	0.18	-3	28	-1	2	-6	0	100	3.20	98	108	99	99	110	102	98
22	1321	I	0007BS00566	USA 194882	G	BLESSING BANKER AGENDA ET	52	143	1913	95	-393	21	18	83	3	52	0.43	0.21	10	97	10	2	7	9	102	2.88	106	101	99	102	101	102	100
23	1308	D	0011BS00594	CAN 40724	G	SUN-MADE GAR BRO PRONTO ET	35	56	978	97	313	80	19	83	11	69	0.07	-0.01	-1	42	1	7	-4	-3	107	3.00	109	97	111	94	92	97	100
24	1298	D	0071BS00020	CAN 34148	G	FOREST LAWN PAT JOYTRK ET	88	165	2785	96	-339	30	6	69	-1	45	0.24	0.13	4	77	2	-1	3	-1	108	2.96	99	110	108	94	97	101	108
25	1282	D	0200BS00112	USA 68109002	G	SUN-MADE GB VITAL SIGN ET	26	39	493	87	715	99	7	69	25	92	-0.28	-0.03	-1	42	2	-2	-2	2	102	2.92	104	102	103	98	103	100	96



**Provincial and National Averages Used as Benchmarks for Genetic Herd Inventory Reports**  
**Moyennes provinciales et nationales à titre de point de repère pour les rapports d'Inventaire génétique du troupeau**

Breed: Brown Swiss


- December 2015 / Décembre 2015 -

Race: Suisse Brune

All Active Cows / Toutes les Vaches Actives														
Province	No. Cows	% Inbreeding	Milk	Fat	Protein	% Fat	% Protein	SCS	CONF	Mammary System	Feet & Legs	Dairy Strength	Rump	LPI
	No. Vaches	% Consanguinité	Lait	Gras	Protéine	% Gras	% Protéine	CCS		Système mammaire	Pieds & membres	Puissance laitière	Croupe	IPV
NS / NÉ	24	7.12	69.8	3.5	4.4	0.01	0.02	2.96	2.9	2.0	2.7	2.7	2.6	1042
NB	10	8.73	132.3	7.7	6.8	0.03	0.02	2.81	2.3	1.7	1.6	0.8	2.2	1184
QC	924	6.76	111.8	4.2	4.8	0	0.01	2.96	1.5	1.4	1.4	0.9	1.5	1029
ON	712	6.88	159.6	6.8	6.6	0.00	0.01	2.94	2	1.8	1.6	1.3	2.1	1077
MB	282	7.46	-17.2	-1.4	-1	-0.01	0.00	2.96	2.9	2.5	1.6	2.2	3.5	952
SK	4	8.86	14.3	-8.8	-6.3	-0.08	-0.07	2.91	1.3	1.8	1.0	-1	1.5	887
AB	39	4.08	482.8	9.7	12.9	-0.11	-0.06	2.93	-0.5	-0.4	-0.5	-0.3	2.5	1101
BC / CB	68	8	80.3	-1.6	1.5	-0.06	-0.02	2.97	4.1	3.5	2.9	2.9	3.3	1024
<b>CANADA</b>	<b>2063</b>	<b>6.91</b>	<b>116</b>	<b>4.2</b>	<b>4.6</b>	<b>0</b>	<b>0.00</b>	<b>2.95</b>	<b>1.9</b>	<b>1.7</b>	<b>1.5</b>	<b>1.3</b>	<b>2</b>	<b>1037</b>

Active Cows With Publishable Production Indexes / Vaches Actives avec Indices de Production Publiables														
Province	No. Cows	% Inbreeding	Milk	Fat	Protein	% Fat	% Protein	SCS	CONF	Mammary System	Feet & Legs	Dairy Strength	Rump	LPI
	No. Vaches	% Consanguinité	Lait	Gras	Protéine	% Gras	% Protéine	CCS		Système mammaire	Pieds & membres	Puissance laitière	Croupe	IPV
NS / NÉ	20	7.57	48	2	3.3	0.00	0.01	2.94	3.2	2.2	3.1	2.8	2.9	1042
NB	10	8.73	132.3	7.7	6.8	0.03	0.02	2.81	2.3	1.7	1.6	0.8	2.2	1184
QC	554	6.97	89.9	3.1	4	0.00	0.01	2.96	1.9	1.7	1.7	1.1	1.6	1028
ON	633	7.03	152.9	6.9	6.6	0.01	0.01	2.94	2.1	1.9	1.6	1.3	2.1	1083
MB	261	7.61	-23.9	-1.5	-1.2	0.00	0	2.96	3.1	2.6	1.6	2.2	3.6	953
SK	4	8.86	14.3	-8.8	-6.3	-0.08	-0.07	2.91	1.3	1.8	1	-1	1.5	887
AB	37	4.13	501	10.3	13.2	-0.11	-0.06	2.93	-0.6	-0.5	-0.5	-0.4	2.6	1113
BC / CB	63	7.96	92.2	-1.2	2.3	-0.06	-0.01	2.97	4.1	3.6	3	3	3.3	1041
<b>CANADA</b>	<b>1582</b>	<b>7.09</b>	<b>106</b>	<b>3.9</b>	<b>4.3</b>	<b>0.00</b>	<b>0</b>	<b>2.95</b>	<b>2.2</b>	<b>2</b>	<b>1.7</b>	<b>1.4</b>	<b>2.2</b>	<b>1041</b>


Active Cows With Unpublishable Production Indexes / Vaches Actives avec Indices de Production Non-Publiables														
Province	No. Cows	% Inbreeding	Milk	Fat	Protein	% Fat	% Protein	SCS	CONF	Mammary System	Feet & Legs	Dairy Strength	Rump	LPI
	No. Vaches	% Consanguinité	Lait	Gras	Protéine	% Gras	% Protéine	CCS		Système mammaire	Pieds & membres	Puissance laitière	Croupe	IPV
NS / NÉ	4	4.88	178.8	11	9.8	0.04	0.03	3.04	1.5	1	0.8	2.3	1.3	1045
NB	0	---	---	---	---	---	---	---	---	---	---	---	---	---
QC	370	6.46	144.7	5.8	6	0	0.01	2.96	1.0	0.8	1	0.7	1.3	1031
ON	79	5.67	213.4	5.8	6.6	-0.03	-0.01	2.99	1	0.5	1.4	1.2	1.9	1021
MB	21	5.65	67.3	-0.2	1.5	-0.04	-0.01	2.94	1.2	1	1.1	1.5	2.2	942
SK	0	---	---	---	---	---	---	---	---	---	---	---	---	---
AB	2	3.24	146.5	-2.5	6	-0.1	0.01	2.92	0.5	1	-0.5	2.5	0.5	885
BC / CB	5	8.58	-70.4	-7	-9	-0.06	-0.07	2.97	3.8	2.8	1	1.6	2	808
<b>CANADA</b>	<b>481</b>	<b>6.29</b>	<b>150.6</b>	<b>5.4</b>	<b>5.8</b>	<b>-0.01</b>	<b>0.00</b>	<b>2.97</b>	<b>1</b>	<b>0.8</b>	<b>1.1</b>	<b>0.8</b>	<b>1.4</b>	<b>1023</b>



APRIL 6-7, 2016

Stratford Rotary Complex, Stratford, ON Canada  
9am - 4pm both days

Free pancake breakfast served from 8am - 9:30am,  
served in the Dairy Classroom, Hall 1  
CheeseFEST - Wed. April 6th 4pm - 7pm



YOUR Canadian Dairy Showcase! - "Spring into Innovation!"



**TOP BROWN SWISS YOUNG BULLS BY GENOMIC PARENT AVERAGE FOR LPI (GPA LPI) - DECEMBER 2015 GENETIC EVALUATIONS**  
**MELLEURS JEUNES TAUREAUX SUISSE BRUNE SELON LA MOYENNE DES PARENTS GÉNOMIQUE POUR L'IPV (IPV MPG) - ÉVALUATIONS GÉNÉTIQUES DÉCEMBRE 2015**  
*(Based on young bulls at least 11 months old with semen available in Canada / Basée sur les jeunes taureaux âgés d'au moins 11 mois dont la semence est disponible au Canada)*

RANK	GPA LPI	REGISTRATION	NAME	A.I. CONTROLLER	SEMI CODE	AGE	MILK	FAT	PROT	%F	%G	SCS	CONF	MS	F&L	DS	RP	NAME of SIRE	NAME of DAM
RANG	IPV MPG	ENREGISTREMENT	NOM	CENTRE d'I.A.	CODE DE SEMENCE	ÂGE	LAIT	GRAS	PROT	%G	%G	CSS	CONF	SM	P&M	PL	Cr	NOM du PÈRE	NOM de la MÈRE
1	2126	CHE 120061028514	HOMERUN	200	0196BS24727	33	1068	48	45	0.04	0.07	2.74	4	5	7	-1	-3	HURAY	KIBA FRUGOLA ET
2	2030	ITA 14990107974	KIBA FASHION ET	200	0200BS07529	21	672	41	49	0.15	0.30	2.84	2	7	2	-2	0	LAVAGE ZEUS VINO ZEPHIR	FABIOLA
3	2029	CHE 120103791208	FALK *TW*TD*TM*TA	200	0196BS24289	37	933	38	43	0.00	0.12	2.74	8	8	5	3	5	NEUTOP PAYOFF ENSTEIN *TM	CA MASCARI AGIO LIETA ET
4	2019	ITA 24990360669	CA MASCARI PAYSLLI	200	0196BS25411	43	1166	42	43	-0.10	-0.01	2.70	7	8	4	4	7	PAYSLLI ET	
5	2003	CHE 120112742062	KIBA ANIBAL FACT ET	200	0196BS28432	22	913	26	38	-0.17	0.05	2.54	10	8	5	2	4	SCHÄRZ BS VIGOR ANIBAL ET	
6	1949	USA 68144448	LIME ROCK SEASIDEBLOOM	200	0200BS00303	40	1191	47	47	-0.05	0.02	2.84	7	5	6	3	6	R N R PAYOFF BROOKINGS ET *TM	LIME ROCK NARCISSUS PETUNIA
7	1938	CAN 11869675	GUBELMAN DIPLOMAT	200	0200BS01001	18	584	41	36	0.21	0.20	2.72	5	5	6	1	6	LAVAGE ZEUS VINO ZEPHIR	GUBELMAN BROOKINGS DESIRE
8	1937	USA 68156713	MEADO-BROOK DREAMIN SHAW ET	7	0007BS00873	23	1026	47	43	0.04	0.05	2.80	7	7	3	1	4	HILLTOP ACRES ALL JACKSON ET	OLD TIME SWEET DREAM
9	1930	USA 68156269	SWITZER TALS COND DIXON ET *TM	7	0007BS00877	23	840	37	43	0.01	0.14	2.84	5	3	7	3	5	SHILOH BROOKINGS CADENCE ET	SWITZER TALS ALIBABA DAVOS
10	1920	USA 68129646	COZY NOOK TWILIGHT TWIN	200	0200BS00117	56	548	23	27	0.01	0.07	2.83	13	12	12	6	7	R N R PAYOFF BROOKINGS ET *TM	COZY NOOK ET VEI TATUM
11	1908	CHE 120105797864	PASSAT	200	0196BS25458	30	726	32	35	0.02	0.10	2.87	14	11	8	8	3	PAYSLLI ET	
12	1903	USA 68147388	OLSONS MEL PAY IMPROVER ET	11	0011BS00685	34	577	46	30	0.26	0.10	2.66	7	9	3	2	-1	PAYSLLI ET	OLSONS BRINKS MELODY *TM
13	1888	840 3004509690	HOLYLAND TIMELESS ET	513	0076BS01402	24	700	35	38	0.07	0.14	2.95	3	4	6	0	1	HURAY	COZY NOOK JOEL TIPSY ET
14	1884	USA 68150445	BLESSING BROOKINGS ADVISOR	7	0007BS00871	35	544	27	28	0.06	0.08	2.66	9	10	8	1	3	R N R PAYOFF BROOKINGS ET *TM	BLESSING VIGOR ALESSA ET
15	1846	CHE 120107139976	BOURBON	200	0196BS28436	22	861	23	44	-0.16	0.15	2.91	12	8	10	5	10	JOLAHOF'S NESTA JENOR *TM	
16	1837	CHE 120103987212	ZUMBÜHL'S BIG STAR *TD*TM*TA	200	0196BS23570	41	359	25	35	0.12	0.28	3.09	15	15	8	4	7	SCHERMA GLENN BLOOMING ET	ZUMBÜHL'S BS NEST LITTLE CORON
17	1826	CHE 120110652608	BUERKLIS BS NIRVANA NATI	200	0196BS26867	24	620	31	25	0.06	0.03	3.00	11	12	6	2	9	MIR ZAST ACE NIRVANA *TM	BÄ/RKLI'S BS JOLDEN JAMBA
18	1800	CHE 120103079740	ALADIN	200	0196BS29905	44	412	39	35	0.27	0.23	2.90	1	1	3	-2	2	SCHÄRZ BS PRESID ALIBABA *TM	
19	1799	840 3004509739	HOLYLAND TOUGHER ET	200	0200BS00121	46	765	30	29	-0.02	-0.01	2.76	7	7	6	2	10	R N R PAYOFF BROOKINGS ET *TM	COZY NOOK JOEL TIPSY ET
20	1762	CHE 120107189674	HILLTOP ACRES CARTER KING-ET	200	0196BS25485	28	627	25	26	0.03	0.03	2.79	12	12	8	7	0	R N R PAYOFF BROOKINGS ET *TM	COZY NOOK JOEL TIPSY ET
21	1757	ITA 48990051310	MIR ASTERIX	200	0200BS07528	19	777	36	32	0.05	0.05	2.71	5	4	5	-1	3	VOELKERS TD CARTER	MIR HURAY INES
22	1755	ITA 14990108005	KIBA NOLIMITS-ET	200	0200BS07885	19	356	12	13	-0.04	0.00	2.75	11	15	7	1	2	SUN-MADE VIGOR ET	KIBA DELICATA ET
23	1748	USA 68153988	LIME ROCK TOLEDO	200	0200BS00123	37	362	34	26	0.23	0.15	2.69	3	4	5	-2	0	OLSONS MEL ZEUS MOTOWN ET	LIME ROCK LALA PEORIA
24	1740	CHE 1201068522946	ROFFLER'S FANTASTIC FORTUNO-E	200	0196BS25658	27	171	23	21	0.20	0.18	3.01	14	13	8	6	14	ABEL'S ZASTER FANTASTIC-ET	
25	1731	CAN 11625261	GUBELMAN DAZZLER	200	0200BS00122	40	950	32	42	-0.12	0.06	2.81	1	0	5	1	5	R N R PAYOFF BROOKINGS ET *TM	GUBELMAN JUHUS DAZZEL

**CANADIAN DAIRY NETWORK / RÉSEAU LAITIÈRE CANADIEN**

**TOP 10 BROWN SWISS HERDS BY LPI / 10 MEILLEURS TROUPEAUX SUISSE BRUNE SELON L'IPV**  
 (minimum 20 active cows with official LPI) / (minimum de 20 vaches actives avec un IPV officiel)

Rank	LPI	No. Cows	%	Name of Farm / Owner	City	Province	Milk	Fat	Protein	Fat %	Prot %	SCS	CONF	MS	F&L	DS	RP
Rang	IPV	No. Vaches	G	Nom de la Ferme / Propriétaire	Ville		Lait	Gras	Protéine	% Gras	% Prot	CCS		SM	P&M	PL	Cr
1	1353	67	16	GUBELMANN BROWN SWISS LTD	WALTON	ON	185	12	16	0.05	0.10	2.88	3.3	3.6	2.8	0.6	2.7
2	1247	42	0	SIGVIEW FARMS	MOOREFIELD	ON	176	15	13	0.10	0.07	2.88	-0.2	0.3	-0.1	-1.2	1.5
3	1227	48	0	SWISS LANE	LISTOWEL	ON	467	16	15	-0.05	-0.04	2.87	3.0	2.6	2.9	2.5	3.3
4	1191	38	13	FERME HANS ENR.	ACTION VALE CO JOHNSON	QC	497	11	15	-0.10	-0.04	2.94	2.1	1.9	2.4	2.1	1.2
5	1186	21	62	PAUFERLOU INC.	POHNEGAMOOK	QC	223	12	10	0.04	0.01	3.01	4.1	3.8	3.2	3.1	2.4
6	1182	21	0	HEIWA FARM	ST-ALBERT	QC	326	14	11	0.01	-0.02	2.91	3.0	2.9	1.9	1.6	2.4
7	1173	25	96	SHADY LANE SWISS	SHAWVILLE	QC	195	6	6	-0.03	-0.02	2.96	8.1	7.2	6.5	6.8	6.4
8	1144	22	0	FERME DES BELLES PRAIRIES INC.	ST-JEAN-SUR-RICHELIEU	QC	213	12	10	0.05	0.02	2.90	1.7	1.3	1.0	1.6	3.6
9	1123	47	30	FERME M.C.F. LECLERC INC.(BS)	TROIS-RIVIERES	QC	200	5	7	-0.03	-0.01	2.96	3.3	3.2	2.7	2.0	2.7
10	1122	25	0	FERME BLYVIAN INC.	ST-HENRI/CO.LEVIS	QC	205	6	8	-0.03	0.00	3.01	4.4	4.0	2.8	2.5	2.1

December/Décembre 2015





# Industry Leadership in Feed Efficiency Research

There's a new buzz word in the dairy cattle industry around the world... "Feed Efficiency". What is this trait? How is it measured? What is the Canadian industry doing in this area? Let's take a closer look.

## What is Feed Efficiency?

In dairy production, we feed cows primarily to produce milk and its components. Some cows need to eat more to produce the same amount of output as other cows that eat less. This difference among dairy cows is a function of their "efficiency" to convert "feed" nutrients into milk and its components, therefore called Feed Efficiency. Given that cows in different herds consume different feed rations, the measurement of feed intake is standardized in units of dry matter intake. A cow with better feed efficiency will produce more kilograms of milk, fat and protein per kilogram of dry matter intake consumed. Interest in Feed Efficiency has grown in recent years since it contributes to higher profit margins while also decreasing the production of methane emissions that negatively affect the environment.

## Factors Affecting Feed Efficiency

The dietary energy that a dairy cow consumes is used for various purposes including body maintenance, growth, pregnancy and milk production. Therefore, factors that affect any of these body functions can also affect feed efficiency. Examples include the number of days in milk during a lactation, a cow's age since she is usually still growing in first lactation, the type of forages in the diet, and stress or disease experienced by the cow.

## How is Feed Efficiency Measured?

One of the major challenges with monitoring and improving feed efficiency is the recording of accurate data in terms of both input and output. To start with, dry matter intake needs to be measured accurately for each cow in the herd and include both the amount of feed provided to each individual cow as well as the amount left over after eating. This is obviously a very expensive process and not feasible on most dairy farms without sophisticated equipment. The output side of the feed efficiency equation is also more complex than generally assumed. Standard milk weights and sample analysis collected by DHI at 4 to 6 week intervals is not accurate enough - daily or weekly data is required.

In terms of expressing each cow's performance for feed efficiency, one strategy is to simply use the actual dry matter intake measured throughout the lactation. This approach is sub-optimal since dry matter intake is highly correlated to milk production, which makes sense since high producing cows need to consume more feed. To solve this problem, the overall consensus amongst scientists globally is the use of Residual Feed Intake (RFI) when assessing feed efficiency. RFI is simply the difference in dry matter intake between a cow and her herdmates after adjusting for the energy used for milk production, body weight and changes in body weight over time.

## Canadian Feed Efficiency Research Initiative

On behalf of its industry partners, Canadian Dairy Network (CDN) prepared a 4-year research proposal aimed at improving feed efficiency and reducing methane emissions in Canadian dairy cattle using genomic evaluation and selection. The total project budget is \$10.3M, including a total contribution of \$860,000 from CDN, and Genome Canada approved financial support

totalling \$3.8M. The research will be led by Dr. Filippo Miglior, Chief of Research and Strategic Development at CDN and Adjunct Professor at the University of Guelph, while Dr. Paul Stothard, Professor at the University of Alberta is project co-leader. There are a several critical components to this research project including:

- Consolidating dry matter intake and methane emissions data collected for groups of dairy cows in Canada, Australia, United Kingdom, Switzerland and United States into a common database at CDN;
- Establishing a database of genotypes for all cows with feed efficiency and/or methane emissions performance data;
- Quantifying the accuracy of milk mid-infrared spectroscopy data as a predictor of feed efficiency and methane emissions in dairy cattle;
- Development of genetic and genomic evaluation systems at CDN for Feed Efficiency and Methane Emissions that would be used for genomic selection of young bulls by A.I. organizations in Canada; and
- Assessment of the social benefits, costs and acceptance towards genomic selection for feed efficiency and reduction of methane emissions.

Given the importance of accurate data collection towards the success of the major research initiative, one of the major project partners is GrowSafe Systems Ltd., located in Airdrie, Alberta ([www.growsafe.com](http://www.growsafe.com)). GrowSafe has developed and manufactured equipment to accurately collect daily feed intake on an individual cow basis. In addition to this type of data being collected in two state-of-the-art research herds in Canada, one owned by the University of Guelph and the other by the University of Alberta, the project proposal includes the involvement of two producer-owned dairy operations that include 200 or more milking cows. CDN is in the process of seeking out those two producers for this important project so those interested should contact CDN.

## Summary

Dairy cattle producers around the world have a growing interest to improve the feed efficiency of their animals since it has a major impact on herd profitability. The dairy industry has also an increased awareness of the importance of reducing methane emissions from dairy production from an environmental and social perspective. On behalf of the dairy cattle improvement industry in Canada, CDN has taken the leadership role in developing a major research initiative, involving international partners, that targets the use of genetics and genomics for improving feed efficiency and reducing methane emissions in dairy cattle. This project has received \$3.8M in funding from Genome Canada and will involve the collection of accurate individual cow feed intake data and genotypes from two research herds and two producer-owned herds in Canada. The ultimate goal is the implementation by CDN of new genetic and genomic evaluation systems for these traits in the coming years.

Author: Brian Van Doormaal, General Manager, CDN

Date: October 2015

Other interesting reports from CDN can be viewed at: [https://www.cdn.ca/files\\_ge\\_articles.php](https://www.cdn.ca/files_ge_articles.php)

## Swissgenetics Breeding Value Highlights December 2015

### BROWN SWISS

#### New releases:

**KreuzerHever BS Gln DONJUAN-ET (Glenn x Alibaba x Dender):** DONJUAN is another Glenn son with a totally different profile. He combines the best qualities of Glenn and Alibaba and comes out as a specialist for production, components and functional type.



**Florin's Vigor VIDAL-ET (Vigor x Gardan x Pete Rose)** VIDAL is confirming the top qualities of his dam Gardan GERDA, she was the best udder cow at the European contest of Rotholz 2008. VIDAL has shown a group of daughters at the Expo Swissgenetics 2015 last week and has impressed all the visitors with super udders and cows built for commercial herds.

*VIDAL daughter group at EXPO Swissgenetics*

#### Proven sires:

**Scherma Glenn BLOOMING-ET (Glenn x Arsene x Premium)** With now more than 1300 daughters in his proof, BLOOMING has taken another forward jump. His indexes are once more confirming his incredible qualities: easy leader in all conformation traits, big improver of protein % and kg, high DPR index.

**Studer's BS Glenn GENOX-BOY (Glenn x Eagle x Starbuck)** GENOX-BOY has the same number of daughters as last August. His production indexes are stable but he comes out as the best Glenn son for SCS and milking speed. His great strength lies in conformation (121), his notes for frame (127) and rump (133) are exceptionally high. This means GENOX-BOY sires powerful, large and balanced cows.

**Diethelm Glenn GUSTI (Glenn x Zeus CH x Premium)** Another Glenn son with a different profile, GUSTI is our best Glenn son for all production traits and, at the same time, he remains a top bull for all fitness traits. GUSTI is the right mating if you like to increase production, components, frame, strength and daughter fertility all at once!

**Schärz BS Vigor ANIBAL-ET (Vigor x Mascot x Starbuck)** One of the worldwide leaders of the breed! It's not easy to find a more complete bull than ANIBAL! With more daughters in his proof, he went up for milk, fat, protein, SCS and persistency. One of the most used sire of sons.

**Mani's Vigor VILENO (Vigor x Eagle x Collection)** VILENO is the Vigor son out of the family of Wurl WACHTEL, please check his genetic profile and tell us if you can find anything wrong. He is



**Kälingen Nesta NESCARDO (Nesta x Picard x Poldi)** NESCARDO is the udder maker and with CALVIN, he leads this special ranking. His indexes and his calves born worldwide confirm that NESCARDO is a special bull.

**NORWIN (Nesta x Precise x Ensign)** NORWIN has had a new top run, went up for protein % and continues to be the leader for the rear udder attachment, feet & legs and locomotion!

*Norwin daughter group at EXPO Swissgenetics*



### Genomics:

**Scherma Blooming BIVER (Blooming x Nesta x Moiado)** Just as his sire Blooming, BIVER is leading all genomic lists for conformation, mammary system and continues to be the most used bull in many different countries like Italy, Switzerland and USA.

**FACT (Anibal x Huray x Playboy)** Like his sire Anibal, FACT is leading the Swiss ranking of the genomic bulls for Total Merit Index (146 GZW). FACT has a breeding value of over +1400 kg milk, he is the best for SCS index and has great results for longevity and udder composite.

**NATIONAL (Nirvana x Jolden x President)** NATIONAL comes out of the famous family of President SAMBA and his dam is a maternal sister of Zaster ZAMBA! NATIONAL is the best Nirvana son available with a complete profile!

**TOPSPEED (Huray x Vasir x Politan)** Top ranking bull with 144 GZW! He is a late Huray son with a totally different pedigree. TOPSPEED is a unique bull and he is the leader for milk kg (+1933), fat kg (78) and protein kg (67).

## ORIGINAL BRAUNVIEH

### New releases:



**VERO U-BACH (Lukas x Diamant x Merlo)** is a new released proven bull with many good qualities. Conforming to the goals of the Original Braunvieh breed, VERO U-BACH shows a balanced profile with nice indexes for production, conformation and beef production.

*VERO U-BACH daughter group at EXPO Swissgenetics*

### Genomics:

**LORDAN (Rino x Lukas x Gral)** LORDAN continues to be very hot, after a nice start last August. He went further up for milk, fat, protein, SCS, longevity and daughter fertility!

**VALERIUS (Venner x Dom x Kastor)** Our second genomic bull for the Original Braunvieh with a nice genomic profile and a special cow family behind: the dam is EX-95, the grand-dam is EX-92 and the great grand-dam is EX-94!

## Swissgenetics - December 2015 - Order Deadline/Délai de commande - January 11, 2016

Contact your local AI unit for further information. Contactez votre unité IA local pour de plus amples informations.

CIAQ 1-800-563-5603, EastGen 1-800-267-9222, ext 339 (Nancy), WestGen 1-800-563-5603

			GLPI/PPVG	% Reliability/Fiabilité	Daughters/Filles	Milk/Lait (Kg)	Fat/Gras (Kg)	Protein/Protéine (Kg)	% Dev./Diffé	% Dev./Diffé	Daughters/Filles	Conformation
196BS23838	Jeune	Scherma Blooming <b>BIVER</b>	MPG	50		637	40	46	0.16	0.28		17
196BS24289	Jeune	<b>FALK</b> BH1	MPG	51		933	38	43	0.00	0.12		8
CHEM12009323727	NEW	KreuzerHever BS Glen <b>DONJUAN</b> ET	MACEG	63	38	588	45	44	0.24	0.27	25	9
196BS28432	Jeune	Kiba Anibal <b>FACT</b> ET BH1	MPG	48	108	913	26	38	-0.17	0.05	98	10
196BS17348	Jeune	Diethelm's Glenn <b>GUSTI</b> ET	MACEG	74		975	57	51	0.19	0.19		10
196BS30018	Jeune	Gasis BS Huray <b>TOPSPEED</b>	MP	31		1110	63	48	0.19	0.10		0
196BS23570	Jeune	Zumbühl's <b>BIG STAR</b>	MPG	48		359	25	35	0.12	0.28		15
196BS26867	Jeune	Buerklis BS Nirva <b>NATIONAL</b>	MPG	48		620	31	25	0.06	0.03		11
196BS25485	Jeune	Hilltip Acres Carter <b>KING</b> ET	MPG	52		627	25	26	-0.03	0.03		12
196BS17191		Grob's Glenn <b>FLOH</b>	MACEG	72	77	355	32	21	0.20	0.09	65	11
196BS16716		Kaligen Nesta <b>NESCARDO</b>	MACEG	71	91	396	5	13	-0.15	-0.03	75	14
CHEM120074028822		Mani's Vigor <b>VILENO</b>	MACEG	73	102	744	16	33	-0.18	0.08	89	7
196BS18360		<b>NORWIN</b>	MACEG	72	116	902	22	32	-0.19	0.00	92	11
196BS17199		Vetsch's Nesta <b>CALVIN</b> ET	MACEG	72	104	345	-3	11	-0.21	-0.01	90	13
196BS17089		Studer's BS Glen <b>GENOX-BOY</b> BH1	MACEG	71	79	473	11	17	-0.10	0.01	69	14
303BS28432	Jeune	Kiba Anibal <b>FACT</b> ET BH1	MPG	48		913	26	38	-0.17	0.05		10



## Proven Bulls Stronger Than Ever.

Leading the way on the proven front is 54BS500 Whiskey who confirmed what we have been seeing in the field and improved an impressive 507 pounds of milk to +655 and .4 Type to land at +.5. He also improved nearly .5 for Udder Composite. He also improved to +1.0 DPR. We expect these numbers to continue to rise as he adds daughters to his production and type proofs.

54BS492 Double Dare made his debut in the proven line-up with a very balanced proof for type, udders and components. He is +.82 UDC and +.09 % fat with +29 pounds. He also offers out-cross opportunity as he has no Vigor, Wonderment, Brookings or Pronto.

54BS502 Git-R-Done lived up to his name and made the proven line-up for the first time. Another outcross pedigree, he also offers +876 milk and +.7 DPR.

54BS482 Carter defended is #1 Type rating with FS of +1.3 and remains one of the elite milk bulls at +986 and an udder composite of +.96.

The old guard performed well also, with 54BS438 Brookings improving across the board! He is up for milk, fat, protein, Productive Life, Daughter Fertility and Type! He is up to 1772 daughters world-wide!

The king, 54BS374 Vigor crested 18,000 daughters world-wide and still is the breed's most popular bull. He is the #1 second crop bull for Udder Composite and Productive Life!

Genomic Gems....Indeed!

This run we add 3 extremely exciting Genomic Gems!

54BS557 Get Lucky is the new #1 bull for milk (+2059) fat (+62) and protein (+59). He is also +.6 final score and +.45 udder composite. He is a Huray X Harts Lady Lust, a proven cow family. This is the most extreme production bull since the genomic era!

54BS555 Car NP is our first offering of polled genetics, and what an offer it is! From Carter's fabulous Brookings sister, he is sired by the Friedens Parade NP a bull, who has a unique pedigree being a Brinks with over 30,000 at 2000 and from an Entice. He is the #1 Polled bull for milk, fat, protein, type and Udder Composite!

54BS551 Ben is an early Carter son that ranks #5 G-Milk bull at +1260 from a high type Galaxy daughter descending to the 'B-Hive'

54BS538 Richard remains the #1 G-Type and G-Udder Composite bull in the breed. Add his popular pedigree, 664 pounds of milk and high DPR, you can see why he is one of the most popular genomic bulls in the breed.

You can find more information at [www.brownswiss.com](http://www.brownswiss.com) or call us up, and we will talk cows!





## 7th Brown Swiss Show at Hanover, Ontario, August 8, 2015

- 12 Open Show Exhibitors, 7 Junior Exhibitors
- 41 head shown for Judge: Marty Unholzer

**Champion Showperson:** Ashley McConnell

**Reserve Champion Showperson:** Charlene Elliott

**Champion Calf** – Ashley McConnell

**Reserve Champion Calf** – Charlene Elliott

### Junior Calf

1. Batesdale Seaman Robin, Batesdale Farms
2. Gubelman Zephir Deana, Gubelmann Brown Swiss Ltd.
3. Gubelman Sun Tess, Liberty Farm
4. Gubelman Cadance Daytona, Gubelmann Brown Swiss Ltd.
5. Bartstar Manchester Prospect, David & Melissa Lawrence
6. Bartstar Manchester Satin, David & Melissa Lawrence

### Winter Calf

1. Batesdale Seaman Margartia, Batesdale Farms
2. Keviott Acres Tougher Beatric, Kevin Elliott
3. Keviott Acres Pepper Belinda, Kevin Elliott
4. Gubelman Joschka Wonder, Gubelmann Brown Swiss Ltd.
5. Gubelman Joschka Winter, Gubelmann Brown Swiss Ltd.

### Fall Calf

1. Batesdale Austin Nicolette, Batesdale Farms
2. Keviott Acres Vigor Bonnie, Kevin Elliott
3. Keviott Acres Vigor Britain, Kevin Elliott
4. Dutcholm Jongleur Beauty, Shawn VerVoort

### Summer Yearling

1. Nor Bella Carter Daffy, Nor Bella Acres Inc.
2. Brown Heaven Mandel Jeaver, Amanda & Andrew Den Haan
3. Bartstar Whiskey Sour, David & Melissa Lawrence
4. Keviott Acres Millenium Bridget, Kevin Elliott
5. Sun Made SD Supr Kirby, Shawn Vervoort

### Junior Yearling

1. Dortholme PS Sunshine, John & Shirley Dortmans
2. Glen Islay Fantasy, Amanda & Andrew Den Haan
3. Keviott Acres Vigor Barlene, Kevin Elliott

### Winter Yearling

1. Batesdale Jongleur Nicknak, Batesdale Farms
2. Glen Islay Fanta, Amanda & Andrew Den Haan
3. Keviott Acres Raven Angel, Kevin Elliott

### Fall Yearling

1. Shenel-Blanhaven Java Spice, Evan & Jackie Blanchard

### Junior Champion

Batesdale Austin Nicolette, Batesdale Farms

### Reserve Junior Champion

Batesdale Seaman Robin, Batesdale Farms

### Junior Best 3

1. Batesdale
2. Keviott Acres
3. Gubelman
4. Bartstar

### Junior 2 Year Old

1. Gubelman Brookings Denver, Gubelmann Brown Swiss Ltd.
2. Bartstar Pepper Popper, David & Melissa Lawrence

### Senior 2 Year Old

1. Milec Traction Belle, Shawn VerVoort

### 3 Year Old

1. Towpath Teaton Sky, John & Shirley Dortmans

2. Gubelman Dally Dallas, Gubelmann Brown Swiss Ltd.

#### **4 Year Old**

1. Edencrest Grandslam Mackey, Edencrest Swiss
2. Gubelman Alibaba Alice, Gubelmann Brown Swiss Ltd.
3. Batesdale Galaxy Roxine, Batesdale Farms
4. Maycco Falecee, May Farm

#### **5 Year Old**

1. Edencrest OM Supreme Rose, Edencrest Swiss
2. Edencrest OM Supreme Abby, Edencrest Swiss

#### **Aged Cow**

1. Gubelman Special Danish, Gubelmann Brown Swiss Ltd.
2. Batesdale Wurl Naomi, Batesdale Farms
3. Batesdale Daniel Roxy, Batesdale Farms

#### **Best Udder of Show**

1. Gubelman Special Danish, Gubelmann Brown Swiss Ltd.
2. Towpath Teaton Sky, John & Shirley Dortmans

#### **Grand Champion**

Gubelman Special Danish, Gubelmann Brown Swiss Ltd.

#### **Reserve Grand Champion**

Towpath Teaton Sky, John & Shirley Dortmans

#### **Best Bred and Owned**

Gubelman Special Danish, Gubelmann Brown Swiss Ltd.

#### **Progeny of Dam**

1. Gubelman
2. Bartstar
3. Glen Islay

#### **Dam and Daughter**

1. John & Shirley Dortmans
2. Gubelman
3. Bartstar
4. Shawn VerVoort

#### **Best 3 Females**

1. Gubelman
2. Batesdale

#### **Best Herd of 5 Females**

1. Gubelman
2. Batesdale

**Premier Breeder** – Gubelmann Brown Swiss Ltd.

**Reserve Premier Breeder** – Batesdale Farms

**Premier Exhibitor** – Gubelmann Brown Swiss Ltd.

**Reserve Premier Exhibitor** – Batesdale Farms

---

## **Kincardine Brown Swiss Show 2015**

Our Brown Swiss Show was held at the Kincardine Fair on Saturday, September 5. The show was judged by David Johnston from Listowel. Our Brown Swiss Miss Hilary Schramm was on hand to give out the prizes.

#### **Class 1**

##### **Female born March 1, 2015 – May 31, 2015**

1. Norbella Seaman Miss Piggy
2. Dun Rovin Davenport Scotch
3. Gubelman Dimes P Arielle P
4. Gubelman Sun Tess shown by Klaas DeBoer
5. Gubelman Zephyr Deanna
6. Swiss Lane Carter Kittykat
7. Gubelman Cadence Daytona
8. Swiss Lane Dally Macey

##### **Class 2 Female Intermediate Calf born Dec. 1, 2014 – Feb. 28, 2105**

1. NorBella PR Eva
2. Keviott Acres Pepper Belinda

3. Keviott Acres Tougher Beatric

##### **Class 3 Female Senior Calf born Sept. 1, 2014 – Nov. 30, 2014**

1. Gubelman Dazzler Doortje shown by Klaas DeBoer
2. Keviott Acres Vigor Bonnie
3. Mont Pleasant Orange Janie
4. Keviott Acres Vigor Britain

##### **Class 4 Female Summer Yearling Heifer born June 1, 2014 – Aug. 31, 2014**

1. Norbella Carter Daffy
2. Mont Pleasant Orange Jam

## Kincardine Brown Swiss Show 2015 con't



### **Class 5 Female Junior Yearling Heifer born Mar. 1, 2014 – May 31, 2014**

1. Swiss Lane Dally Makala
2. Keviott Acres Vigor Barlene

### **Class 6 Female Intermediate Yearling born Dec. 1, 2013 – Feb. 28, 2014**

1. Dun Rovin Sundown Isabella **Junior Champion:** Norbella Carter Daffy  
**Junior Reserve:** NorBella PR Eva

### **Class 8 Junior Breeders Herd**

1. NorBella
2. Gubelmann
3. Keviott Acres
4. Swisslane

### **Class 9 Junior Exhibitors Herd**

1. Keviott Acres
2. Gubelmann
3. Swisslane

### **Class 10 Female Junior 2 year old born Mar. 1, 2013 – Aug. 31, 2013**

1. Swisslane Manchester Lolita

### **Class 11 Female Senior 2 year old born Sept. 1, 2012 – Feb. 28, 2013**

1. NorBella Paul Raindrop
2. Mont Pleasant Orange Jolly

### **Class 12 Female 3 year old born Sept. 1, 2011 – Aug. 31, 2012**

1. NorBella Paul Eve
2. Gubelman Brookings Claire
3. Gubelman Dally Dollar

### **Class 13 Female 4 year old Born Sept. 1, 2010 – Aug. 31, 2011**

1. Dun Rovin Supreme Butterscotch

### **Class 15 Mature cow Born before Sept. 1, 2009**

1. Gubelman Special Danish

**Grand Champion:** NorBella Paul Eve

**Reserve Champion:** Gubelman Special Danish

**Honourable Mention:** Gubelman Brookings  
Claire

### **Class 16 Best Udder**

1. NorBella Paul Eve
2. Mont Pleasant Orange Jolly
3. Gubelman Brookings Claire

### **Class 17 Breeders' Herd**

1. Gubelmann
2. Mont Pleasant
3. Swisslane

### **Class 19 Dam and Daughter**

1. Gubelmann
2. Dun Rovin Acres

## National Brown Swiss Show 2015, Supreme Dairy Show, St. Hyacinthe, Qc

Thursday, November 5, 2015, Judge: Rejean Leclerc, Qc

### **Génisse Été/Summer Calf**

- 1 BROWN HEAVEN B SWEETY DALLY ET, Best Bred & Owned, Dave Rousseau et Josée Charron
- 2 BROWN HEAVEN GLENN FANNY ET, Dave Rousseau et Josée Charron

3 BROWN HEAVEN BIVER FAY, Dave Rousseau et Josée Charron

4 RHART CONQUEST 18, Sylvain Légaré

5 MELISCKA MILLENIUM DIVA, FERME MÉLICKA 1997 INC.



### **Génisse Junior/Junior Calf**

- 1 BROWN HEAVEN BLOOM BLUBERRY ET , Best Bred & Owned, Dave Rousseau et Josée Charron
- 2 BROWN HEAVEN BLOOM BUBLEGUM ET Dave Rousseau et Josée Charron
- 3 ELOC TEMTATION KANDO , A. Dean Cole and J.A. Sandy Cole
- 4 BATESDALE SEAMAN ROBIN , Dan Bates
- 5 YELLOW BRIAR SERAPHINA , JEFF STEPHENS & JEFF WOODS
- 6 VONLA SEAMAN BISCUIT , Jonathan Cyr
- 7 MILKSHAKE FANTASTIC SKYPE ET , Antonin Marcoux, Sonia Dumont, Ilona Ogay
- 8 BROWN HEAVEN GLENN FANTASIA ET , Dave Rousseau et Josée Charron
- 9 VERONAMOUR BOSEPHUS KARDAMONE , LES ELEVAGES CÉLESTAR INC LES ELEVAGES PIKARO
- 10 GOULAISE KANNON CALINOCHÉ , Club Brown Swiss du Québec

### **Génisse Intermédiaire/Intermediate Calf**

- 1 GOULAISE SSBLOOM BALLERINE , Best Bred & Owned, Ferme Goulaise Inc.
- 2 RENCIE FANTASTIC JAFAN , Keven Dumas
- 3 ISIDORE FABULOUS JELIA , Sem Lehmann
- 4 BATESDALE SEAMAN MARGARITA , Dan Bates
- 5 MILKSHAKE FANTASTIC CLEOPATRE , Antonin Marcoux

### **Génisse Senior/Senior Calf**

- 1 BATESDALE AUSTIN NICOLETTE , Best Bred & Owned, Dan Bates
- 2 ANFIELD BOSEPHUS DIVA , Sem Lehmann
- 3 MILEC DALLY BELLE ET , Club Brown Swiss du Québec
- 4 VERONAMOUR JOSY GOLDMINE , LES ÉLEVAGES CÉLESTAR INC.
- 5 MILEC SEASIDE BLOOM PRUNE , Chantal Leclerc

### **1 an été/ Summer Yearling**

- 1 WRIGHT-WAY TIESTA SIESTA , Lookout, Gerald Halbach
- 2 CUTTING EDGE HP TAN BUFFY , Ferme Blondin
- 3 BROWN HEAVEN MANDEL JEAVER , FERME BROWN HEAVEN

### **1 an junior/Junior Yearling**

- 1 ARETHUSA WHISKEY NORDICA ET , Lookout, Gerald Halbach, Sherri Hall
- 2 GLEN ISLAY FANTASY , Best Bred & Owned, AMANDA & ANDREW DENHAAN
- 3 JOLIDAI AMARETTO BRITOUNE , LISE DESHARNAIS
- 4 BROWN HEAVEN TOTAL DOLHA , Sylvain Légaré
- 5 BROWN HEAVEN BONANZA FRISKY , Dave Rousseau et Josée Charron

### **1 an intermédiaire/Intermediate Yearling**

- 1 BATESDALE JONGLEUR NIK NAK , Best Bred & Owned, Dan Bates

### **Bannière d'éleveur junior/Junior Breeder Banner**

- 1 BROWN HEAVEN
- 2 BATESDALE
- 3 MILEC

### **Bannière d'exposant junior/Junior Exhibitor Banner**

- 1 DAVE ROUSSEAU ET JOSÉE CHARRON
- 2 DAN BATES
- 3 SEM LEHMANN

### **Troupeau d'éleveur junior**

- 1 Brown Heaven , Dave Rousseau et Josée Charron

## National Brown Swiss Show 2015 cont'd

2 Dan Bates

### **Championne junior**

1 WRIGHT-WAY TIESTA SIESTA , Lookout, Gerald Halbach

### **Championne junior de réserve**

1 CUTTING EDGE HP TAN BUFFY , Ferme Blondin

### **Mention Honorable junior**

1 ARETHUSA WHISKEY NORDICA ET , Lookout, Gerald Halbach, Sherri Hall

### **Meilleurs taureaux (junior)**

1 CUTTING EDGE SEAMAN \*TM

1 SCHERMA GLENN BLOOMING ET \*TM

2 LIME ROCK SEASIDEBLOOM

3 SCHAMAUN BS GORDON GLENN ET

### **1 an senior en lait/Milking Yearling**

1 BROWN HEAVEN J FANCY ET - Best udder Best Bred & Owned, Dave Rousseau et Josée Charron

2 GOULAISE VIGOR ARLY , Ferme Goulaise Inc.

### **2 ans junior/Junior 2 Year Old**

1 ANFIELD THUNDER RAISIN , Best Bred & Owned, Dave Rousseau et Josée Charron

2 MILEC TRACTION BERLINE ET , - Best udder , Chantal Leclerc

3 ARNOLD GLENN SKYFALL ET , Antonin Marcoux, Sonia Dumont, Ilona Ogay

### **2 ans senior/Senior 2 Year Old**

1 BROWN HEAVEN THUNDER BETSY , - Best udder Best Bred & Owned, Dave Rousseau et Josée Charron

2 NORTH LANES PARADISE , Jonathan Cyr

3 BROWN HEAVEN LEGACY JEWEL ET , Dave Rousseau et Josée Charron

### **3 ans junior/Junior 3 Year Old**

1 RENCIE AMARETTO TERRISO , - Best udder Best Bred & Owned, Keven Dumas

### **3 ans senior**

1 JOLIDAI JONNY SUSELLE , - Best udder , JEANNOT & LISE DESHARNAIS

### **Championne intermédiaire/Intermediate Champion**

1 BROWN HEAVEN THUNDER BETSY , Dave Rousseau et Josée Charron

### **Championne intermédiaire de réserve/Reserve Intermediate Champion**

1 JOLIDAI JONNY SUSELLE , JEANNOT & LISE DESHARNAIS

### **Mention Honorable intermédiaire/Honorable Mention Intermediate Champion**

1 RENCIE AMARETTO TERRISO , Keven Dumas

### **4 ans/4 Year Old/4 Year Old**

1 GOULAISE JONGLEUR LOVER , - Best udder Best Bred & Owned, Ferme Goulaise Inc.

2 BROWN HEAVEN J BUTTERFLY , Dave Rousseau et Josée Charron

### **5 ans/5 Year Old**

1 BROWN HEAVEN GLENN FANTASY , - Best udder Best Bred & Owned, Dave Rousseau et Josée Charron

2 JONLEE EDDIE CAISTON ZIX , Chantal Leclerc

### **Vache adulte/Mature Cow**

- 1 RENCIE AGIO SUISSY , - Best udder Best Bred & Owned, Keven Dumas
- 2 MILEC POWER BELLA ET , Chantal Leclerc

### **Progéniture de mère/Progeny of Dam**

- 1 SWISS DREAM AGENDA FAITH ET , BROWN HEAVEN & FERME VANNOD & ASSOCIÉS ENRG
- 2 BROWN HEAVEN J BUTTERFLY , FERME BROWN HEAVEN
- 3 MILEC ZEUS BEAUTY ET , FERME MCF LECLERC INC.
- 4 BROWN HEAVEN GLENN FANTASY , FERME BROWN HEAVEN

### **Troupeau d'éleveur**

- 1 Brown Heaven , Dave Rousseau et Josée Charron
- 2 Chantal Leclerc

### **Bannière d'éleveur/Premier Breeder**

- 1 BROWN HEAVEN
- 2 MILEC
- 3 RENCIE
- 3 GOULAISE

### **Bannière d'exposant/Premier Exhibitor**

- 1 DAVE ROUSSEAU ET JOSÉE CHARRON
- 2 CHANTAL LECLERC
- 3 KEVEN DUMAS

### **Grande Championne/Grand Champion**

- 1 BROWN HEAVEN GLENN FANTASY , - Best udder Best Bred & Owned, Dave Rousseau et Josée Charron

### **Grande Championne de reserve/Reserve**

#### **Grand Champion**

- 1 BROWN HEAVEN THUNDER BETSY , Dave Rousseau et Josée Charron

### **Mention Honorable/Honourable Mention**

#### **Grand Champion**

- 1 JOLIDAI JONNY SUSELLE , JEANNOT & LISE DESHARNAIS

### **Meilleurs taureaux (de la journée)/Premier**

#### **Sire**

- 1 JOLAHOFS POLO JONGLEUR ET \*TM
- 2 SCHAMAUN BS GORDON GLENN ET
- 3 CUTTING EDGE THUNDER \*TM



## **Coloured Breed Highlights - December 2015 -**

### **Daughters of "Brookings" Attract Attention Among Top GLPI Cows in Brown Swiss**

As R N R Payoff Brookings ET (Payoff x Denmark) maintains his breed-leading position at #1 LPI, his daughters dominate the group of newly indexed cows this round. Leading the pack is Shady Lane Swiss Brkngs Alpha at #2 GLPI (#5 Protein, tied #7 Conformation), who lands between Gubelman Juhus Crystal at #1 GLPI (#1 Fat, tied #1 Protein) and her herdmate Gubelman Brookings Claire (#3 GLPI). The second highest newly indexed cow, also by Brookings, is Gubelman Brookings Dina at #5 GLPI (tied #6 Protein), just behind Gubelman Juhus Dazzel (#4 GLPI, #3 Milk, tied #5 Fat, tied #1 Protein), which completes the list of Top 5 GLPI cows. For sires, only minor shuffling of ranking occurs this round as Schamaun BS Gordon Glenn ET now takes #2 LPI, behind Brookings at #1, with Olson Millenium, Peters' Top Zoldo Zeus and Blessing Prophet Ransom rounding out the Top 5 LPI list, respectively.

# Alberta Braunvieh Report



It is hard to believe that this year is soon at the end. It was a challenging one, to say the least. Alberta experienced wide-spread drought conditions and for us that meant feeding cattle till the end of June, by which time pastures were finally good enough so they could survive the summer.

The next challenge was to line up enough hay for the winter – our hayfields only produced less than a third of the normal quantity. Hay was very expensive and had to be hauled long distances. Well, we managed and the fall was pretty decent weather wise and we could let the bovines graze the fields that were too short to cut for hay a second time.

In May and June, we attended three 4-H events to give support to the young fellow that showed one of our Braunvieh steers. Connor placed right in the middle of his class with “Duke”, who behaved and looked great. First to third were three black Angus steers, then Duke, followed by three red Angus steers. Connor also had a carcass steer “Ripley”, who with a warm carcass weight of 620 lbs dressed 54.53%, lean yield 59%, ribeye area 75 cm and fat thickness of 4 mm and graded AAA.

This fall, Connor came back and bought another two steers for 4-H and his 10 year old sister Emily followed right in his footsteps also buying two steers. Each of them will have one for show and one for carcass.

In July, the K-Day Exhibition in Edmonton again invited us to bring in cattle for display and so we exhibited one cow with heifer calf at foot and one with two heifer calves at foot. That wasn't the initial intent, but the first cow/calf were so bored and the facilities were so big for her that we fixed the boredom bringing in the others, having plenty of room to do so. That move made every bit of a difference. The calves were lively and playing lots, giving the Exhibition visitors hours of entertainment and good laughs.

Then, as every year, we brought a string of cattle to Farmfair International from November 9 to 14 inclusive and, as every year, the “Brownies” got a lot of attention. They did well again in the Multibreed Show against tough competition from Galloways, Salers and Blonde d'aquitaines. We didn't get any Champions other than a Reserve Junior Heifer, but brought home two red, three blue and two white ribbons and the Premier Breeder and Premier Exhibitor banners. The Grand Champion went to a young Galloway breeder who showed an exceptionally nice cow/bull calf pair. It is nice to see young folks getting into showing with such enthusiasm.

So, everything went well. We had just the greatest weather all through the Farmfair days with temperatures around zero or just below. We also had again very nice 4-H kids helping out and an experienced Gelbvieh breeder enjoyed showing the cattle together with me. We also had a good time with the rest of the exhibitors.

You could call this yearly get-together like a “working holiday”. As they say, a change is as good as a rest. However, we still ended up coming home dead tired, because it is a lot of work and the days are extremely long. But the end result is always satisfying and we are always happy to be home again with all the animals in good health – a top priority.

Now, work is stabilizing and we will soon take time to organize another Alberta Braunvieh meeting – lots of things to discuss.

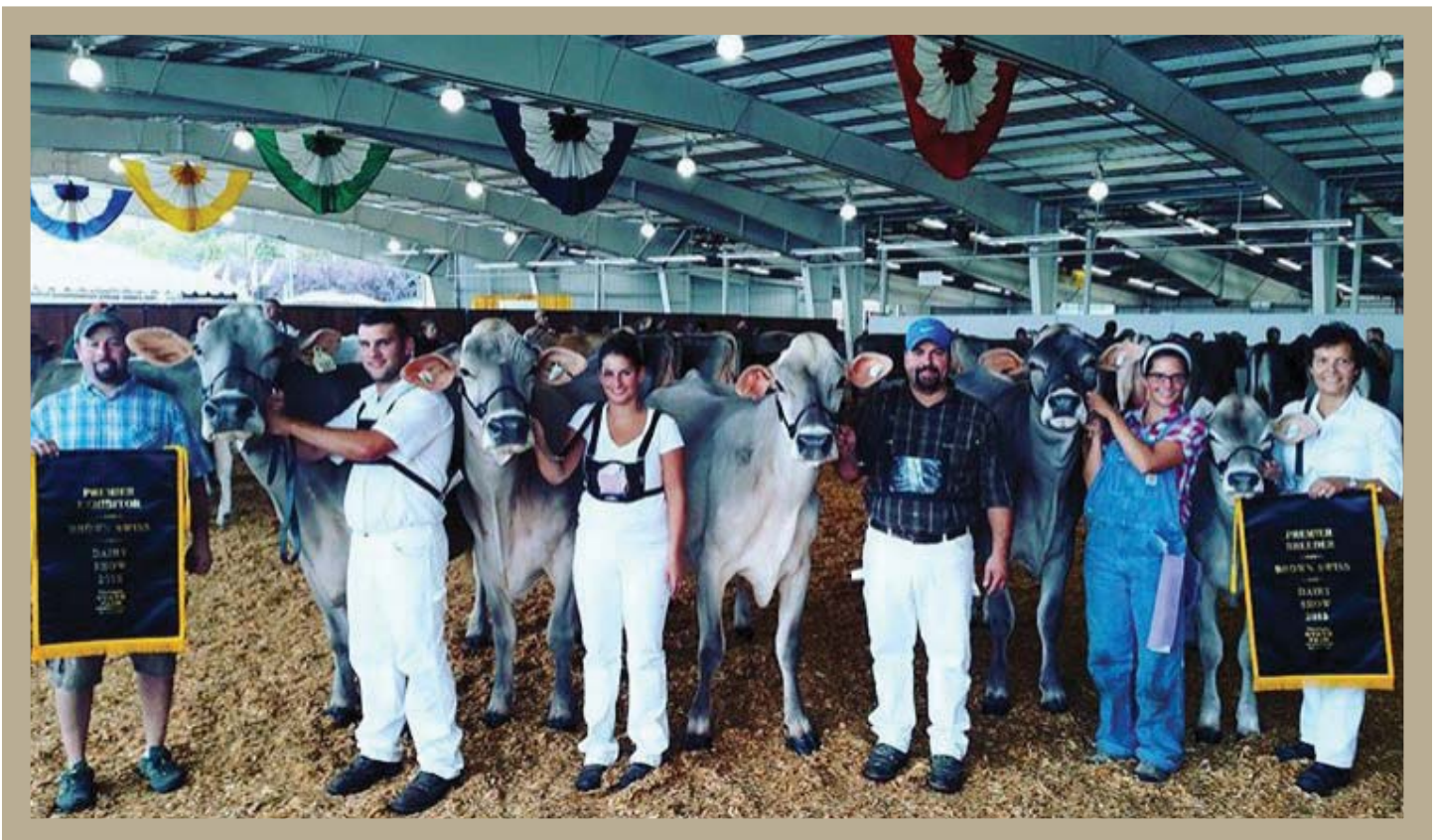
Festive greetings to all and wishes for a good and healthy New Year.

Verena Peden  
Alberta Braunvieh Association Secretary-Manager



## Update from B.C.

Bradner Farms had much success at the shows this year. At the Northwest Nationals we brought home Premier Breeder & Exhibitor banners, Grand & Reserve Champion, Intermediate & Reserve Intermediate, Junior and Reserve Junior Champion against 75 head shown. We brought 2 heifers and 3 cows to World Dairy Expo; 4 of which were top 5! We bred and owned our first ever World Dairy Expo class winner Bradner Jongleur Pasttime and had 4th place 5 year old Bradner Wonderment Terrie which was a very strong class of which Grand and Reserve champion came out of. We have made many changes on our farm the past 2 years. Robert Jr started dairying on his own last September and Bud and Sarah will be starting up on their own as well January 2016. We are happy to see the next generation carry on and love watching them learn and enjoy what they do. We continue to grow our herd with Brown Swiss and strive to breed and develop long-lasting profitable cows. Wishing everyone a Merry Christmas & many blessings in the New Year. See everyone at Convention 2016!





Holiday greetings to all of our friends and fellow Brown Swiss breeders across Canada. We are enjoying a mild fall here in Ontario and Christmas is coming up quickly. We held our Ontario Annual Meeting on Saturday, November 28. We started this year with a barn meeting at Losland, the home of Bill Los and his family at Listowel. We toured their new facilities at their two home farms and enjoyed coffee and donuts and catching up with each other. From there we went to Veky's Restaurant in Listowel and had our meeting. As a result we had an excellent turn-out to our meeting. The directors thank the Los family for their hospitality and everyone who attended in support of our association. Thank you to everyone who has been involved this year, especially our Brown Swiss Miss Hilary Schramm who stepped in for a second year when we needed her.

Congratulations to the winners of our Production Awards: Gubelmann Brown Swiss had the Highest B.C.A. based on over 25 completed records with an average of 303.3. Robin Nest Acres Inc. had the highest B.C.A. on 10 – 25 completed records with an average B.C.A. of 270. In the most improved category, there was a tie between NorBella Acres Inc. and Clearcrest Farms with a score of +21.6 on over 25 completed records. Robin Nest Acres Inc. won a second award for most improved B.C.A. on 10 – 25 completed records with an improvement of 35 points.

We are looking forward to hosting the C.B.S.B.A. A.G.M. in the spring. Here are the details so far:

Monday, March 21 – Wednesday, March 23, 2016

The Holiday Inn, 601 Scottsdale Drive, Guelph ON 1-888-253-1628

A block of 50 rooms has been reserved at a cost of \$114.99/night

Across the road from the Stone Road Mall

Evening reception on March 21 • A.G.M. on March 22 • Barn tours on March 23

## **Ontario Brown Swiss Association Board of Directors**

Chairman: Dale Phillips (705)357-3834 [studlyfarmer@hotmail.com](mailto:studlyfarmer@hotmail.com)

### **Directors:**

Simon Signer (519)638-0206

Stefan Gubelmann (519)527-2428 [gubelman@tcc.on.ca](mailto:gubelman@tcc.on.ca)

Harold Jelinski (705)424-2515 [hmjel@simcoemail.com](mailto:hmjel@simcoemail.com)

Troy McConnell (519)396-8290

Daniel Bates (705)818-0370

Secretary: Tracy Reid (519)377-2812

Merry Christmas and Best Wishes for the New Year.



## Victoriaville Show

On Friday August 7, 2015 was held the Brown Swiss judging at the Victoriaville agricultural show. A total of 27 individuals, presented by 10 exhibitors, paraded in front of the judge for the day, Mr. Mario Perreault from Saint-Esprit in Québec.

We wish to thank and congratulate all the breeders who participated and proudly represented the Brown Swiss Breed.

You will find hereafter a summary in words and images of this magnificent day at the Victoriaville agricultural show.

Junior Champion  
Jolidai Amaretto Britoune  
Ferme Chamcy et Ferme Jolidai, Wotton

Reserve Junior Champion  
Rencie Fantastic Jafan  
Ferme Rencie, Inverness

Junior Honourable Mention  
Vonla Manchester Betty  
Ferme Chamcy, Wotton

Junior Breeder and Exhibitor Banners  
Ferme Rencie, Inverness

Grand Champion  
Rencie Agio Suisy  
Ferme Rencie, Inverness

Reserve Grand Champion  
Jolidai Jonny Suselle  
Ferme Francis Roberge, Chesterville

Honourable Mention  
R Hart Carter 910  
Ferme Chamcy et Ferme Jolidai, Wotton

Breeder and Exhibitor Banners  
Ferme Rencie, Inverness





## The Dairy Supreme

This year, Québec hosted the national final of the Brown Swiss breed at the Dairy Supreme. A total of 34 junior animals and 16 senior animals were presented to the judge for the day Mr. Réjean Leclerc. We wish to thank all the exhibitors who made this event a great success. We look forward to seeing you next year!

A sale of Brown Swiss individuals was also held at the Dairy Supreme. You will find below a summary table of the sale:



Lot	Name of animal	Price	Purchaser	City	Province	Consignee	City	Province
1	EDENCREST PEPPER LANA	\$1,700.00	Ferme Rencie Inc. et les Élevages Pikaro	Inverness	Québec	Ferme vannod et associées enr.	St-Louis de Gonzague	Québec
3	DAIRY SWISS FANTASTIC PENNY	\$1,800.00	Ferme MCF Leclerc	Trois-Rivières	Québec	Dave, Dany & Yvan Rousseau	Ste-Anne de la Pocatière	Québec
4	MILEC DALLY BELLE ET	\$3,300.00	Ferme Mélicska 1997 Inc.	St-Germain de Grantham	Québec	Ferme MCF Leclerc inc.	Trois- Rivières	Québec
5	GOULAISE KANNON CALINOCHÉ	\$2,100.00	La Ferme Hans Enr.	Acton Vale	Québec	Ferme Goulaise inc	St-Bernard	Québec
	TOTAL	\$8,900.00						
	AVERAGE	\$2,225.00						

Thank you to all the consignees and purchasers for their confidence!



## Swissgenetics

Last October 5, the Québec Brown Swiss Club had the pleasure of meeting Mr. Mario Hébert, Ciq's General Manager, along with Mr. Stefan Felder, Chairman of the Swissgenetics Executive Committee, in order to strengthen the already established bonds of the partnership. The partnership between Swissgenetics and Semex was concluded in 2004. Semex is responsible for the marketing of Swissgenetics products in all countries other than Switzerland. On the other hand, the partnership developed between Ciq and Brown Swiss Québec gives access to the complete line of Swissgenetics sires available for export to Canada. This enhanced offer allowed for the most important order to be placed with Swissgenetics at the last proof release in August. Thank you to Ciq, Semex and Swissgenetics for this wonderful opportunity.



Participated in the meeting between Ciq and Swissgenetics, from left to right: Mr. Mario Hébert, Ciq GM, Mr. Serge Bilodeau, Québec Brown Swiss Club Advisor, Mr. Stefan Felder, Swissgenetics GM, Mrs. Chantal Leclerc, Québec Brown Swiss Club President, Mr. Léonard Chabot, Ciq Board Member and Mr. Christopher Studer, Semex

**Swissgenetics – December 2015**

**Order Deadline – January 11, 2016**

**Contact your local AI unit for further information.**

CIAQ 1-800-563-5603 • EastGen 1-800-267-9222, ext 339 (Nancy) • WestGen 1-800-563-5603

## Message From The Secretary-Manager's Desk



Once again thank you and congratulations to our members who represented Brown Swiss at World Dairy Xpo in Madison, Wisconsin. Your accomplishments were a huge success! You will notice within the newsletter an advertisement which has been used in various locations to recognize our Canadian bred animals.

The National Brown Swiss Show held this year at the Supreme Show in St. Hyacinthe, Quebec was a new venue for the national show and from all accounts was a success. Thank you to the exhibitors, sponsors, helpers and members who made the show possible. A special thank you to Chantal Leclerc, Serge Bilodeau, Jenny Henchoz, the show committee and the Quebec club for their hard work organizing the show. There will be discussion at the AGM as to the possible venues for the show in order for the Board to determine where the National Brown Swiss Show will be for 2016.

As we make the transition of registrar from CLRC to Holstein Canada, please note after January 1, 2016 the association registrar will be at Holstein Canada. Any registry work you would have normally sent to CLRC should now be forwarded to the following address: Canadian Brown Swiss and Braunvieh, P.O. Box 610, Brantford, ON, N3T 5R4. If you have work at CLRC which is not completed, not to worry CLRC will be forwarding uncompleted registry work to Holstein Canada for processing. Holstein Canada will begin the year with sending out automated membership renewals. If you do not wish to renew your membership simply call Holstein Canada and they will reverse the charge. Moving forward you will not need to send a cheque with your registry work, Holstein Canada will be sending an invoice for the work processed. We are currently working toward online payments and submitting registrations electronically. The updated forms will be added to the association website and as new forms become available they will also be added. We are excited about the opportunities and services which will be made available to our members with the change of registrar. Every effort will be made to make the transition as smooth as possible however as you know with any major change there may

be bumps along the way. Not all services will be available right off the start however we will keep you informed of new services as they become available. Please let me know if you have questions, concerns, suggestions or ideas to make the process even better.

CDN has requested formal feedback from the breed associations regarding the future direction of publishable lactations in Canada. The Industry Standards Committee of CDN is curious to know if the current standards for achieving publishable lactation status is still appropriate. CDN will be researching the benefits in making more lactations, even all lactations, openly and publicly available. CDN will also look at the benefit in separating publishable lactations into a few different categories, with a specific lactation code or label to reflect the amount of data and type of data used to estimate the lactation yields and component percentages. The Board has agreed to proceed with the above research.

The Ontario club has set the dates for the next Annual General Meeting, March 21 – 23, 2016 at the Holiday Inn, Guelph. Make sure to mark your calendars to join your fellow members to celebrate the past year and make plans for the year ahead. The details for booking your hotel room are located within the newsletter.

The new dates of April 6-7, 2016 have been set for the Canadian Dairy Xpo to be held in Stratford. It may seem like a long way away however the show will soon be upon us. The breed has been asked once again to have 2 Brown Swiss animals on the live component breed display. If you have an animal for the display please let me know. We will also require volunteers to help with milking, feeding and caring for the animals on the display – contact us if you know of any possible recruits.

Faith makes all things possible. Hope makes all things work. Love makes all things beautiful. May you have Faith, Hope and Love this holiday season! Wishing you and your family all the joys of this Christmas season and a Happy New Year.

Season's Greetings, Jessie

