



CANADIAN  
**Brown Swiss  
& Braunvieh**  
ASSOCIATION



# Newsletter

December 2016

## Registrar Contact Information:

### Canadian Brown Swiss & Braunvieh

P.O. Box 610 Brantford, ON N3T 5R4

For general registry inquiries please call

1-855-756-8300, Annie Cote, Ext 277 or [brownswiss@holstein.ca](mailto:brownswiss@holstein.ca).

For DNA or genomic testing inquiries, Janine Eygenraam Ext 206 or [JEygenraam@holstein.ca](mailto:JEygenraam@holstein.ca).

## Two National Brown Swiss Goals

- 1 Encourage age at first calving at 23 months or less.
- 2 Encourage the increase of production levels for Fat at 390 kg and Protein at 330 kg (members should aim for a 40 kg increase).

At your convenience please visit us at our web-site: [www.browncow.ca](http://www.browncow.ca)

Find us on Facebook - Ontario Brown Swiss Club & Quebec Brown Swiss Club

Office hours most weeks are Monday, Tuesday and Wednesday 8:30 to 4:00 and Thursday 8:30 to 2:30





## President's Report

Brown Swiss breeders, friends, sponsors and supporters, I would like to say thank you for all the hard work and support you have given to our association this year. Without your continued participation and presence the Canadian Brown Swiss and Braunvieh Association could not accomplish so much with so little.

As the snow begins to fall outside my office window, I can't help but reflect on the past year and what we have accomplished. We almost have our first year with Holstein Canada under our belt. Though there have been a few bumps, most of this has been invisible to the members because of the tireless work of both Jessie and the ladies at Holstein Canada. Please remember if a problem does occur, please notify the office so we can correct it right away. Hopefully in the New Year a few more of the benefits of being with Holstein Canada will become available to us.

I was fortunate to watch the National Show in Ste-Hyacinthe. The Supreme show had some high quality animals competing for top spot, and a lot of interested parties watched from the stands. When the dust settled to no one's surprise Brown Heaven Glenn Fantasy stood alone at the top. Congratulations Dave and Josee and all the other exhibitors. Thank you all for this great exposure for our Breed.

I am already looking forward to the CBS&BA AGM this year, as host Quebec always out does themselves. We will have our usual updates on where the association stands financially, our membership and registration numbers will be published and there are also many resolutions that may affect our constitution and the direction of our Association. We will be visiting Ferme Goulaise Inc and Ferme Rencie Inc, with a visit to a Sugar Shack

in between for lunch. Please attend and participate. It is only with the guidance of the membership that the board can help provide for the needs and desires of the breeders.

Speaking of the board I would like to welcome Harold Jelinski to our Board of Directors. Harold has participated in provincial and national activities for many years and is sure to bring some new ideas for us to explore. With this addition I regret to announce that Ernst Gubelmann has retired from our board. The leadership, strength and wisdom he brought to our board of directors for the past 18 years gave us great stability and allowed us to create partnerships with other organizations that are essential to our survival. His knowledge and connections internationally have been very helpful in guiding our board and the decision we have made. I will personally miss the debates, discussions and disagreements we had. I always enjoyed his smile and wink after an argument, realizing he was just taking the opposing side to encourage participation from members, or to get under Serge's skin. Thank you Ernst!

When a new year starts it holds great promise and possibility, but we can't sit back and wait for things to happen, we must chart our own course!

From my family to yours we wish you a Merry Christmas and a Happy New Year!

Ken Drummond

# Classification Schedule

November – Early March



## Mid November

ON – mid-round: Huron, Grey, Ontario Central, Victoria, Durham

QC - Kamouraska

QC – mid-round: Lac St Jean, Roberval, Portneuf, Lapointe, Chicoutimi  
Alberta, Manitoba

## Late November

ON – mid-round: Ontario, Waterloo, Peterborough

QC – Riviere Du Loup

## Early December

ON – Oxford

ON – mid-round: Waterloo

QC – Rimouski, Matapedia, Bonaventure, Temiscouata, Matane

QC – mid-round: Vaudreuil, Huntingdon, Chateauguay, Beauharnois, Richmond, Missisquoi  
PEI, Nova Scotia, New Brunswick, Newfoundland mid-round

## Mid December

ON – mid-round: Simcoe, Dufferin

QC – mid-round: Iberville, St Jean, Shefford, Compton, Brome, Sherbrooke, Stanstead

## Early January

ON – Perth

ON – mid-round: Northern Ontario, Thunder Bay, Glengarry & Stormont, Dundas, Prescott  
QC – Arthabaska, Wolf, Megantic, Lotbiniere

## Mid-January

ON – Renfrew, Grenville, Pontiac, Lanark

ON – mid-round: Niagara's & Wentworth, Brant & Haldimand Norfolk, Carleton

QC – Nicolet, Yamaska

Saskatchewan mid-round

## Late January

ON – Leeds, Bruce

ON – mid-round: Russell

QC – Bagot, Drummond, Rouville, Richelieu, Vercheres

QC – mid-round: Beauce & Levis, Frontenac & Beauce  
British Columbia

## Early February

ON – Grey, Huron

QC – St Hyacinthe/Chambly, Abitibi, Temiscamingue

QC – mid-round: Dorchester

## Mid-February

ON – Peel, Halton, York

ON – mid-round: Middlesex, Essex, Kent & Lambton

QC – Papineau & Gatineau, Deux Montagnes, Argenteuil, Labelle, Berthier

## Late February

ON – Victoria, Durham, Northumberland

ON – mid-round: Middlesex & Elgin

QC – Terrebonne, Joliette, Montcalm, L'Assomption, St Maurice, Maskinonge, Champlain

QC – mid-round: Montmagny & L'Islet

Alberta mid-round

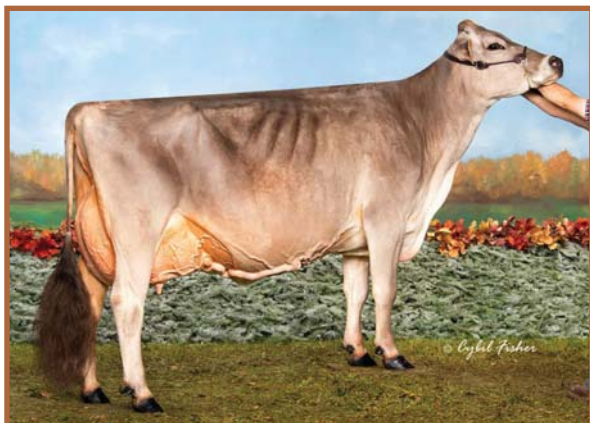
## Early March

ON – Simcoe, Dufferin, Ontario, Peterborough

QC – Laviolette, Portneuf

QC – mid-round: Kamouraska

Manitoba mid-round



# Congratulations!

Congratulations to Ferme Brown Heaven with Brown Heaven Glenn Fantasy (EX-95) for winning the 2016 World Dairy Expo Grand Champion, 2016 Supreme Dairy Show (National) Grand Champion and Supreme Champion.

What an amazing accomplishment!

# Canadian Brown Swiss & Braunvieh Association Annual General Meeting



Hotel Quality Inn  
5800, rue des arpens  
Lévis, PQ, G6V 0B5  
1-866-955-7733

Wednesday, March 15

9:00 a.m. National Board Meeting

Thursday, March 16

8:30 a.m. Registration for Annual General Meeting  
9:00 a.m. Annual General Meeting  
6:30 p.m. Banquet

Friday, March 17

Barn Tours  
Morning - FERME GOULAISE  
222 RANG ST LUC  
ST BERNARD DE DORCHESTER, QC G0S 2G0

Dinner at the Sugar Shack

Afternoon – FERME RENCIE  
2110 CHEMIN DUBLIN  
INVERNESS, QC G0S 1K0

Translation will be available at the AGM.  
Amendments to the constitution are due to the office by January 15, 2017.

## All Canadian Contest

Please submit your All Canadian entries to the office by December 31, 2016 or as soon as possible thereafter. The entry form can be found on the association website at [www.browncow.ca](http://www.browncow.ca). Contact the office if you require a hard copy of the form sent to you.

The results will be announced at the Annual General Meeting banquet.



**Audrey Grier**

October 1, 1930 - August 19, 2016

This summer, the Brown Swiss family in Manitoba and across Canada said “good-bye” to our dear friend, Audrey Grier, of Crikside Farms. We will miss her smile and her caring friendship. Audrey was like a mother and grandmother to many of us in the Manitoba Brown Swiss Association, taking a genuine interest in our families and our farms.

We are grateful for all the time and energy Audrey put into promoting the Brown Swiss breed throughout the years. She has left a lasting legacy of placing value on faith, family, and farm.

We have lost a pillar and an ambassador for the Brown Swiss breed, but, more than anything, we have lost a wonderful friend.

Submitted by Linda Doerksen, on behalf of the Manitoba Club



**YOUR Canadian Dairy Showcase!**  
**APRIL 5 - 6, 2017**  
**Stratford, ON CANADA**

**Breed Bizz** Tattoo letter for 2017 is E

If you have cattle or embryos for sale please send a list to the office so interested parties requesting this information can be made aware.

Suggestions, comments, stories, jokes, articles that would be of interest in the newsletter are always welcome.

Rates for Placing a Newsletter Ads	
Business Card Ad.	\$25.00
Quarter Page Ad.	\$65.00
Half Page Ad.	\$125.00
Pre-Approved Stuffers	\$250.00



**Association Clothing Available**

Please contact the office if you wish to purchase Association clothing. What a great way to promote the breed!

- Golf Shirts - \$40.00
- Long Sleeve Dress Shirts - \$40.00
- Jackets - \$40.00
- Caps - \$12.00

**CONTACT US:**  
**Canadian Brown Swiss & Braunvieh Association**

7660 Mill Rd  
Guelph, ON, N1H 6J1  
Phone: 519-821-2811  
Fax: 519-763-6582



# 2016 Excellents (January - November 2016)



BSCANF9695511	GUBELMAN SPECIAL DANISH	EX	95	3E	GUBELMANN BROWN SWISS LTD.	ON
BSCANF106157091	BROWN HEAVEN GLENN FANTASY	EX	95	1E	FERME BROWN HEAVEN	QC
BSUSAF958708	SILVER TOP DY CHARLOTTE	EX	94	3E	FERME BROWN HEAVEN	QC
BSCANF8646311	CRISIDE TRUDAWN	EX	93	6E	CRISIDE FARMS	MB
BSUSAF957593	OLD MILL AMAZING GRACE	EX	93	4E	BRADNER R FARMS LTD	BC
BSCANF105764596	HIRONDELLE EROS MACHA	EX	93	4E	FERME HIRONDELLE SAINTE-HTLFNE INC.	QC
BSCANF104477178	DAYRY SWISS ZEUS US LUCKY	EX	93	4E	FERME BROWN HEAVEN	QC
BSCANF105491883	ISIDORE FERRARI BRIA	EX	93	3E	FERME LEHMANN	QC
BSCANF11592757	NOR BELLA PAUL EVE	EX	93	1E	NOR BELLA ACRES INC.	ON
BSCANF104346302	GOULAISE WURL TRIOLI	EX	92	5E	FERME GOULAISE INC.	QC
BSCANF8987975	CRISIDE HEARTBREAKER	EX	92	4E	CRISIDE FARMS	MB
BSCANF8987978	CRISIDE PRINCE SUNDOWN	EX	92	4E	CRISIDE FARMS	MB
BSCANF104277880	ISIDORE BRINKS KALINDA	EX	92	4E	FERME LEHMANN	QC
BSCANF106031610	SEROL DEVONTE GRACE	EX	92	3E	FERME SEROL SENC	QC
BSCANF105175666	BROWN HEAVEN GRIFFIN TOOTIE	EX	92	3E	FERME BROWN HEAVEN	QC
BSCANF7912909	DUN ROVIN ACRES LEGACY JUDITH	EX	92	3E	GEOFFREY MCCONNELL	ON
BSCANF104878900	GOULAISE SCIPIO UGOLINE	EX	92	3E	FERME GOULAISE INC.	QC
BSCANF106773279	FRAGANCES SHEBANG CHAKIRA	EX	92	2E	FERME FRAGANCES INC.	QC
BSCANF9830956	BATESDALE DEVONTE FLORA	EX	92	2E	BATESDALE FARMS	ON
BSCANF104911595	SABONO VIGOR LILA	EX	92	2E	FERME SABONO	QC
BSCANF9555149	ROBIN NEST SCIPIO KONE	EX	92	2E	OSCAR BOWMAN	ON
BSCANF10883148	NOR BELLA TD ELLIS	EX	92	2E	NOR BELLA ACRES INC.	ON
BSCANF10883174	NOR BELLA SENSATION ENERGY ET	EX	92	2E	NOR BELLA ACRES INC.	ON
BSCANF11105046	SWISS DREAM MONA LISA ET	EX	92	1E	LAURIE & DONNA HARP % APPLGROVE DAIRY	MB
BSCANF106157102	BROWN HEAVEN J BUTTERFLY	EX	92	1E	FERME BROWN HEAVEN	QC
BSCANF10883174	NOR BELLA SENSATION ENERGY ET	EX	92	1E	NOR BELLA ACRES INC.	ON
BSCANF9481237	NOR BELLA BLAZER MEADOW	EX	91	7E	NOR BELLA ACRES INC.	ON
BSCANF7677885	CRISIDE HOPE	EX	91	4E	CRISIDE FARMS	MB
BSCANF104917361	FRAGANCES CARTOON ZEPHYRE	EX	91	4E	FERME FRAGANCES INC.	QC
BSCANF8987940	CRISIDE SILKIE	EX	91	4E	CRISIDE FARMS	MB
BSCANF7677885	CRISIDE HOPE	EX	91	3E	CRISIDE FARMS	MB
BSUSAF68102386	TOP ACRES EXPRESS TAHITI ET	EX	91	3E	GOLDEN GATE FARMS LTD	BC
BSCANF105175654	CASTEL FASTBREAK CHIPITS	EX	91	3E	FERME BROWN HEAVEN	QC
BSUSAF68105814	FOXTRACT EMORYS EBB	EX	91	3E	FERME CHARLUSON INC	QC
BSCANF10883141	NOR BELLA CHAMPION DYLAN	EX	91	3E	NOR BELLA ACRES INC.	ON
BSCANF105693054	MILKSHAKE DANIEL ORÉO	EX	91	2E	ANTONIN MARCOUX	QC
BSCANF11014201	GUBELMAN ALIBABA ALICE	EX	91	2E	GUBELMANN BROWN SWISS LTD.	ON
BSCANF107010648	GOULAISE JONGLEUR LIMOCHE	EX	91	2E	FERME GOULAISE INC.	QC
BSCANF9555149	ROBIN NEST SCIPIO KONE	EX	91	2E	OSCAR BOWMAN	ON
BSCANF106221319	SYLGO AGENDA DORALY	EX	91	2E	FERME SYLGO SENC	QC
BSCANF11014197	GUBELMAN ALIBABA DELTA	EX	91	2E	GUBELMANN BROWN SWISS LTD.	ON
BSCANF10883182	NOR BELLA SCIPIO ROOTBEER	EX	91	1E	NOR BELLA ACRES INC.	ON
BSCANF9994063	ALDEE COLLECTION CHORAL ET	EX	91	1E	LAURIE & DONNA HARP	MB
BSCANF11301121	BRADNER SUPREME TA-DU	EX	91	1E	GOLDEN GATE FARMS LTD	BC
BSCANF10925937	DUN ROVIN FRONTIER ISABEL	EX	91	1E	DUN ROVIN ACRES LTD	ON
BSCANF10883173	NOR BELLA SUPREME SPARKS ET	EX	91	1E	NOR BELLA ACRES INC.	ON
BSCANF11014237	GUBELMAN BROOKINGS CLAIRE	EX	91	1E	GUBELMANN BROWN SWISS LTD.	ON

BSCANF11625268	GUBELMAN PROHUVO DIME	EX	91	1E	GUBELMANN BROWN SWISS LTD.	ON
BSCANF7677876	CRIKSIDE JUNIPER	EX	90	4E	CRIKSIDE FARMS	MB
BSCANF8987997	NOR BELLA CARTOON SHELBY	EX	90	4E	NOR BELLA ACRES INC.	ON
BSCANF8937302	PRINZEN CARTOON REBECCA ET	EX	90	4E	PHILIP & DAVID PRINZEN	ON
BSCANF104265174	MILEC ZEUS BEAUTY ET	EX	90	4E	FERME MCF LECLERC INC.	QC
BSCANF9695459	GUBELMAN PAYOFF WALDI	EX	90	4E	GUBELMANN BROWN SWISS LTD.	ON
BSCANF7677890	CRIKSIDE AMMIE	EX	90	3E	CRIKSIDE FARMS	MB
BSCANF8988012	NOR BELLA ZEUS SERENITY ET	EX	90	3E	NOR BELLA ACRES INC.	ON
BSCANF9695515	GUBELMAN TD MOCCA	EX	90	3E	GUBELMANN BROWN SWISS LTD.	ON
BSCANF9695518	GUBELMAN VIGOR DANIELLE	EX	90	3E	GUBELMANN BROWN SWISS LTD.	ON
BSCANF9594911	SWISS KINE AGENDA TESSA	EX	90	3E	SIGHT HILL FARM LTD	MA
BSCANF7771584	EXCELSIOR BANKER MARVEL ET	EX	90	3E	JOHN G & LOUISE DEELSTRA	ON
BSCANF9889675	SIGEL PARKER META	EX	90	3E	MICHAEL & CORDULA INAUEN	ON
BSCANF8987966	CRIKSIDE KOLA	EX	90	3E	CRIKSIDE FARMS	MB
BSCANF105158037	PAUFERLOU POET WILLOW	EX	90	2E	PAUFERLOU INC	QC
BSCANF107010648	GOULAISE JONGLEUR LIMOCHE	EX	90	2E	FERME GOULAISE INC.	QC
BSCANF11014209	GUBELMAN DALLY MORGAN	EX	90	2E	GUBELMANN BROWN SWISS LTD.	ON
BSCANF10925923	DUN ROVIN SUPREME BUTTERSCOTCH	EX	90	2E	DUN ROVIN ACRES LTD	ON
BSCANF9702419	TOP SWISS VIGOR SUZIE	EX	90	2E	SIGVIEW FARMS	ON
BSCANF9695513	GUBELMAN VIGOR ANGEL	EX	90	2E	GUBELMANN BROWN SWISS LTD.	ON
BSCANF9899017	ROBIN NEST VIGOR BETH	EX	90	2E	OSCAR BOWMAN	ON
BSCANF9555171	ROBIN NEST VIGOR ROSE	EX	90	2E	OSCAR BOWMAN	ON
BSCANF8987951	CRIKSIDE TURMOIL MACARINA	EX	90	2E	CRIKSIDE FARMS	MB
BSCANF11138640	BATESDALE DANIEL MACEY	EX	90	2E	BATESDALE FARMS	ON
BSCANF105491896	ISIDORE TAU JULIA	EX	90	2E	FERME LEHMANN	QC
BSCANF10883146	NOR BELLA PARKER LANDRY	EX	90	2E	NOR BELLA ACRES INC.	ON
BSCANF9819775	ELOC AGENDA ROSCO	EX	90	2E	A. DEAN COLE	NS
BSCANF8987974	CRIKSIDE FASTBREAK TRULOVE	EX	90	2E	CRIKSIDE FARMS	MB
BSUSAF68105155	MS HILLBILLYS ELLIE MAE ET	EX	90	2E	GOLDEN GATE FARMS LTD	BC
BSCANF11014192	GUBELMAN VASIR DOREEN	EX	90	2E	GUBELMANN BROWN SWISS LTD.	ON
BSCANF11202378	CARLETON JAYCEE	EX	90	2E	LEAH RICHARDSON-DEAN	ON
BSCANF104911569	SABONO AGENDA MYRTHIL	EX	90	2E	FERME SABONO	QC
BSCANF11014164	GUBELMAN GLENN LESLIE	EX	90	2E	GUBELMANN BROWN SWISS LTD.	ON
BSCANF9695483	GUBELMAN VIGOR DARCY	EX	90	2E	GUBELMANN BROWN SWISS LTD.	ON
BSCANF9809605	DUN ROVIN BRILLIANT PEARL	EX	90	2E	DUN ROVIN ACRES LTD	ON
BSCANF9899047	ROBIN NEST AGIO DOON	EX	90	1E	FOUR OAK FARMS	MB
BSCANF9796626	FOUR OAK WONDERMENT TWINKLE	EX	90	1E	FOUR OAK FARMS	MB
BSCANF105756445	JOLIDAI POET GITANE	EX	90	1E	JEANNOT & LISE DESHARNAIS	QC
BSCANF107114179	VIBERT JONGLEUR SUGARCRISP	EX	90	1E	VICKY PLANTE	QC
BSCANF105535728	FLEUR CARTOON ANNA	EX	90	1E	FERME BELFLEUR 2008 INC	QC
BSCANF11138641	BATESDALE DANIEL ELYSE	EX	90	1E	BATESDALE FARMS	ON
BSCANF9830958	BATESDALE SPECIAL KRISSY	EX	90	1E	BATESDALE FARMS	ON
BSCANF11138634	BATESDALE EDDIE TRINKET	EX	90	1E	BATESDALE FARMS	ON
BSCANF106157106	BROWN HEAVEN TRACT SWEET DALLY	EX	90	1E	FERME BROWN HEAVEN	QC
BSUSAF68135016	COLOR BLIND S DELILAH ET	EX	90	1E	BROWN HEAVEN & FERME VANNOD & ASSOCIÉS ENRG	QC
BSCANF11437145	DUN ROVIN REGGIANO PRECIOUS	EX	90	1E	DUN ROVIN ACRES LTD	ON
BSCANF11282392	SIGEL WONDERMENT MOLLI	EX	90	1E	MICHAEL & CORDULA INAUEN	ON
BSCANF9943453	SPRING ROSE LEGACY BOUQUET	EX	90	1E	STEPHEN HENHOEFFER	ON
BSCANF106823837	SHADY LANE SWISS PRK APOLLO ET	EX	90	1E	BARRIE A & DIANE DRUMMOND	QC
BSCANF106823865	SHADY LANE SWISS MTWN ACURA ET	EX	90	1E	BARRIE A & DIANE DRUMMOND	QC
BSUSAF68129405	JONLEE EDDIE CAISTON ZIX	EX	90	1E	FERME MCF LECLERC INC.	QC

BSCANF11177635	ROBIN NEST DRAGON DANDY	EX	90	1E	OSCAR BOWMAN	ON
BSCANF11175510	EASTWIND LESTER DORA	EX	90	1E	HEIDI & WALTER VON AH	ON
BSCANF11301127	BRADNER PS TRISTAN ET	EX	90	1E	GOLDEN GATE FARMS LTD	BC
BSCANF11522517	BRADNER BROOKINGS PICKET ET	EX	90	1E	BRADNER R FARMS LTD	BC
BSCANF11625279	GUBELMAN BROOKINGS DELIGHT	EX	90	1E	GUBELMANN BROWN SWISS LTD.	ON
BSCANF11014259	GUBELMAN DALLY DOLLAR	EX	90	1E	GUBELMANN BROWN SWISS LTD.	ON
BSCANF11625268	GUBELMAN PROHUVO DIME	EX	90	1E	GUBELMANN BROWN SWISS LTD.	ON
BSCANF11014207	GUBELMAN MADRIGAL DARLIN	EX	90	1E	GUBELMANN BROWN SWISS LTD.	ON
BSCANF11014169	GUBELMAN VIGOR CINDERELLA	EX	90	1E	GUBELMANN BROWN SWISS LTD.	ON
BSCANF10883158	NOR BELLA JETFIRE STELLA	EX	90	1E	NOR BELLA ACRES INC.	ON
BSUSAF68144045	JONLEE PREMI ORISEDAL	EX	90	1E	FERME R.D. LIMOGES SENC	QC
BSCANF10980378	KEVIOTT ACRES MILLENIUM XPRT	EX	90	1E	KEVIN ELLIOTT	ON
BSCANF10980372	KEVIOTT ACRES MOTOWN XIANG	EX	90	1E	KEVIN ELLIOTT	ON
BSCANF9907814	CRISIDE FOXTROT	EX	90	1E	CRISIDE FARMS	MB
BSCANF9907824	CRISIDE PARKER PAT	EX	90	1E	CRISIDE FARMS	MB
BSCANF11141362	CRISIDE AGENDA ELEANOR	EX	90	1E	CRISIDE FARMS	MB
BSCANF11141407	CRISIDE QUICKSTEP RUFFLES	EX	90	1E	CRISIDE FARMS	MB

## 2016 Very Good 2 Year Olds (January - November 2016)

BSCANF108217130	MILEC DALLY BAILA	VG2	87		FERME MCF LECLERC INC.	QC
BSCANF107363035	BROWN HEAVEN JET SPEEDY DALLY	VG2	87		FERME BROWN HEAVEN	QC
BSCANF11375583	SWISS DREAM SHAQ UMEA	VG2	87		SWISS DREAM FARM	MB
BSCANF11592780	NOR BELLA GALAXY SISSY	VG2	87		NOR BELLA ACRES INC.	ON
BSCANF12015853	NOR BELLA PAUL ELIZABETH	VG2	87		NOR BELLA ACRES INC.	ON
BSCANF107363039	BROWN HEAVEN BONANZA CHIQUITA	VG2	87		FERME BROWN HEAVEN	QC
BSCANF108880626	BROWN HEAVEN BONANZA FROSTY	VG2	87		GOLDEN GATE FARMS LTD	BC
BSCANF12015861	NOR BELLA PATCH SHEILA	VG2	87		NOR BELLA ACRES INC.	ON
BSCANF11437197	DUN ROVIN SUNDOWN ISABELLA	VG2	86		DUN ROVIN ACRES LTD	ON
BSCANF11437187	DUN ROVIN SUNDOWN CHROME	VG2	86		C MARK MCCONNELL	ON
BSCANF12015861	NOR BELLA PATCH SHEILA	VG2	86		NOR BELLA ACRES INC.	ON
BSCANF12015851	NOR BELLA EMORY PIPPY ET	VG2	86		NOR BELLA ACRES INC.	ON
BSCANF12015862	NOR BELLA PAUL SUNNY	VG2	86		NOR BELLA ACRES INC.	ON
BSCANF11592780	NOR BELLA GALAXY SISSY	VG2	86		NOR BELLA ACRES INC.	ON
BSCANF11869634	GUBELMAN ZEPHIR DYNAMITE	VG2	86		GUBELMANN BROWN SWISS LTD.	ON
BSCANF11869630	GUBELMAN ANIBAL LACY	VG2	86		GUBELMANN BROWN SWISS LTD.	ON
BSCANF108880627	BROWN HEAVEN BONANZA FRISKY	VG2	86		FERME BROWN HEAVEN	QC
BSCANF107363038	BROWN HEAVEN KINGPIN TWITIE	VG2	86		FERME BROWN HEAVEN	QC
BSCANF11911211	BATESDALE THUNDER VERA	VG2	86		BATESDALE FARMS	ON
BSCANF107513875	ISIDORE VIGOR BIA	VG2	86		FERME LEHMANN	QC
BSCANF107513868	ISIDORE ZEPHIR SIENNA	VG2	86		FERME LEHMANN	QC
BSCANF11789868	FOUR OAK BROOKINGS VACHER	VG2	86		FOUR OAK FARMS	MB
BSCANF108217128	MILEC PAYSSLI MUSETTE	VG2	86		FERME MCF LECLERC INC.	QC
BSCANF108217130	MILEC DALLY BAILA	VG2	86		FERME MCF LECLERC INC.	QC
BSCANF108217122	MILEC DALLY BELGAZOU ET	VG2	86		FERME MCF LECLERC INC.	QC
BSCANF108736743	BERTNOR YOUNGIE AMY	VG2	85		FERME BERTNOR INC	QC
BSCANF108959850	CHARLUSON NELGOR MATHILDA	VG2	85		FERME CHARLUSON INC	QC
BSCANF108337236	GRANMONT ALTAPOWERPLAY TUNELLE	VG2	85		FERME DOMAINE DE LA RIVIFRE INC	QC



BSCANF108906694	MILEC GOLDMINE GIPSY	VG2	85	FERME MCF LECLERC INC.	QC
BSCANF108217117	MILEC NELGOR INDY	VG2	85	FERME MCF LECLERC INC.	QC
BSCANF108217103	MILEC POWER SURGE EVA	VG2	85	FERME MCF LECLERC INC.	QC
BSCANF108217116	MILEC DELEGATE BELINDA	VG2	85	FERME MCF LECLERC INC.	QC
BSCANF108681142	SCHWEIZER MOJO KITTY	VG2	85	LA FERME HANS ENR.	QC
BSCANF107961664	SHADY LANE SWISS T ALLOUETTE	VG2	85	BARRIE A & DIANE DRUMMOND	QC
BSCANF108697509	GOULAISE DALLY BALIK	VG2	85	FERME GOULAISE INC.	QC
BSCANF108004041	GOULAISE BROOKINGS ABRICOT	VG2	85	FERME GOULAISE INC.	QC
BSCANF108697459	GOULAISE VIGOR ARLY	VG2	85	FERME GOULAISE INC.	QC
BSCANF108697466	GOULAISE NELGOR AZIC	VG2	85	FERME GOULAISE INC.	QC
BSCANF11903104	SPRING ROSE SENATOR FAUNA	VG2	85	STEPHEN HENHOEFFER	ON
BSCANF11801830	MAYCCO FASINATION	VG2	85	MAY FARM	ON
BSCANF108018108	REDAM GRANDSLAM SHANIA	VG2	85	FERME REDAM INC	QC
BSCANF11437192	DUN ROVIN ACRES SUNDOWN JAMIE	VG2	85	GEOFFREY MCCONNELL	ON
BSCANF11725663	EDEL TWILIGHT TROPHY 942	VG2	85	EDELWEISS DAIRY LTD.	AB
BSCANF11789852	FOUR OAK BOSEPHUS LIGNITE	VG2	85	FOUR OAK FARMS	MB
BSCANF11789847	FOUR OAK BROOKINGS LOPEZ	VG2	85	FOUR OAK FARMS	MB
BSCANF107965605	JOLIDAI FERRARI BETTY	VG2	85	JEANNOT & LISE DESHARNAIS	QC
BSCANF107513877	ISIDORE DALLY SAFRAN	VG2	85	FERME LEHMANN	QC
BSCANF11911212	BATESDALE B FALL FASHION	VG2	85	BATESDALE FARMS	ON
BSCANF11470408	BATESDALE THUNDER VERONICA	VG2	85	BATESDALE FARMS	ON
BSCANF11375578	SWISS DREAM GDR FOX Y	VG2	85	SWISS DREAM FARM	MB
BSCANF11375586	SWISS DREAM SHAQ BANTY	VG2	85	SWISS DREAM FARM	MB
BSCANF107329346	SYLGO TRESSEL LIZOTTE	VG2	85	FERME SYLGO SENC	QC
BSCANF11132139	EDUCATE-A-KID DALLY BERMUDA	VG2	85	ALDOR ACRES DAIRY CENTRE	BC
BSCANF108880633	BROWN HEAVEN FAB CHICKLETS	VG2	85	FERME BROWN HEAVEN	QC
BSCANF107363040	BROWN HEAVEN BONANZA BABE	VG2	85	FERME BROWN HEAVEN	QC
BSCANF108554834	PAUFERLOU FANTASTIC STANIA	VG2	85	PAUFERLOU INC	QC
BSCANF11719473	SIGVIEW WILLIAM TONIC	VG2	85	SIGVIEW FARMS	ON
BSCANF11719465	SIGVIEW SNOWBALL JET	VG2	85	SIGVIEW FARMS	ON
BSCANF11319617	GLEN ISLAY TANBARK FANELLA ET	VG2	85	AMANDA & ANDREW DENHAAN	ON
BSCANF11592778	NOR BELLA TD LONNIE	VG2	85	NOR BELLA ACRES INC.	ON
BSCANF12015860	NOR BELLA THUNDER MACY	VG2	85	NOR BELLA ACRES INC.	ON
BSCANF11869649	GUBELMAN EGAL KATRINA	VG2	85	GUBELMANN BROWN SWISS LTD.	ON
BSCANF11869625	GUBELMAN DIRECT JOEY	VG2	85	GUBELMANN BROWN SWISS LTD.	ON
BSCANF11625297	GUBELMAN BROOKINGS DETROIT	VG2	85	GUBELMANN BROWN SWISS LTD.	ON
BSCANF107363036	BROWN HEAVEN ZEUS US VALSIE	VG2	85	FERME KILDARE	QC
BSCANF108919813	JOLIDAI AMARETTO BRITOUNE	VG2	85	FERME JOLIDAI ET FERME CHAMCY INC.	QC
BSCANF11301746	BRADNER THUNDER SUNLOVER	VG2	85	BRADNER R FARMS LTD	BC
BSUSAF68151405	CUTTING EDGE B SNOWEY	VG2	85	JEFF STEPHENS & JEFF WOODS	ON
BSCANF11625310	GUBELMAN BROOKINGS DESSA	VG2	85	GOLDEN GATE FARMS LTD	BC
BSCANF11625307	GUBELMAN BROOKINGS DEEDEE	VG2	85	GOLDEN GATE FARMS LTD	BC
BSCANF108948544	LENTRE ROCHE BRADY FABULOUS	VG2	85	FERME BENJO 2003 INC	QC
BSCANF11319619	GLEN ISLAY FANTASY	VG2	85		ON

Production Records (January - November 2016) Ranked by Composite Milk, Fat, Protein

Yearlings

1	BSCANF107363037	BROWN HEAVEN J FANCY ET	PB	VG	88	1	9	11472	492	4.3	432	3.8	385	403	415	1203	FERME BROWN HEAVEN	QC
2	BSCANF11567303	KAMA BROOKINGS 643	87	VG	85	1	11	11325	466	4.1	393	3.5	367	367	364	1098	HAPPY COW DAIRY	AB
3	BSCANF11625293	GUBELMAN BROOKINGS DINA	PB	GP	83	1	11	9978	437	4.4	368	3.7	320	344	338	1002	GUBELMANN BROWN SWISS LTD.	ON
4	BSCANF11625301	GUBELMAN VIGOR AMBER	PB	VG	85	1	10	10191	386	3.8	369	3.6	333	309	345	987	GUBELMANN BROWN SWISS LTD.	ON
5	BSCANF11700686	CLEARCREST MOJO BONNIE	75	GP	83	1	11	9341	440	4.7	354	3.8	305	349	331	985	HAROLD & MARSHA JELINSKI	ON
6	BSCANF107955808	SCHWEIZER CAFINO PENELOPE	PB	GP	81	1	9	9674	392	4.0	351	3.6	318	316	331	965	LA FERME HANS ENR.	QC
7	BSCANF107156980	PAUFERLOU TWILIGHT ALMA	PB	GP	82	1	10	9285	428	4.6	329	3.5	306	345	310	961	PAUFERLOU INC	QC
8	BSCANF107780525	LENTRE ROCHE VIGOR FLOWER	PB	VG	86	1	11	9255	398	4.3	345	3.7	302	316	322	940	FERME BROWN HEAVEN	QC
9	BSCANF11771500	SWISSLANE ATWOOD KEELY	75	GP	80	1	11	10861	429	4.0	330	3.0	330	320	287	937	SWISSLANE FARMS	ON
10	BSCANF107965611	JOLIDAI BRIZOU BRIGETTE	PB	GP	81	1	10	9435	390	4.1	348	3.7	304	307	322	933	JEANNOT & LISE DESHARNAIS	QC

Jr. 2 Yr Old

1	BSCANF11625311	GUBELMAN DRIVER BELLE	PB	VG	87	2	1	10520	427	4.1	376	3.6	331	328	339	998	GUBELMANN BROWN SWISS LTD.	ON
2	BSCANF11625297	GUBELMAN BROOKINGS DETROIT	PB	VG	86	2	0	10432	407	3.9	362	3.5	333	318	329	980	GUBELMANN BROWN SWISS LTD.	ON
3	BSCANF107371731	OBERMATT RITANA BROOKINGS ET	PB	GP	84	2	2	9716	427	4.4	386	4.0	303	331	345	979	PAUFERLOU INC	QC
4	BSCANF11625290	GUBELMAN DALLY GLORIA	PB	GP	83	2	2	9962	429	4.3	384	3.9	308	325	340	973		QC
5	BSCANF108955813	SCHWEIZER GOLDMINE FLORE	75	GP	82	2	2	10096	427	4.2	369	3.6	301	312	313	926	LA FERME HANS ENR.	QC
6	BSCANF11765241	EASTWIND BROOKINGS DAZZLE ET	PB	GP	83	2	0	9348	409	4.4	343	3.7	290	312	304	906	HEIDI & WALTER VON AH	ON
7	BSCANF107156973	PAUFERLOU CAFINO ABBA	PB	G	73	2	2	9388	413	4.4	350	3.7	287	311	304	902	PAUFERLOU INC	QC
8	BSCANF108134840	SCHWEIZER POLYKARP MINI	87	GP	81	2	1	10141	413	4.1	361	3.6	299	299	303	901	LA FERME HANS ENR.	QC
9	BSCANF108134842	SCHWEIZER POLYKARP CHARLY	87	GP	81	2	0	9752	405	4.2	336	3.5	298	305	295	898	LA FERME HANS ENR.	QC
10	BSCANF108217097	MILEC GOLDMINE ANIS	PB	GP	81	2	2	9725	384	4.0	332	3.4	303	298	296	897	FERME MCF LECLERC INC.	QC

Sr. 2 Yr Old

1	BSCANF11625279	GUBELMAN BROOKINGS DELIGHT	PB	EX	90	2	10	12689	515	4.1	466	3.7	347	346	364	1057	GUBELMANN BROWN SWISS LTD.	ON
2	BSCANF11050863	CLEARCREST SCIPIO CHOCOLATE	75	GP	81	2	11	12720	497	3.9	459	3.6	352	338	364	1054	HAROLD & MARSHA JELINSKI	ON
3	BSCANF11625281	GUBELMAN ALIBABA CAITLIN	PB	VG	85	2	9	11746	479	4.1	453	3.9	324	326	357	1007	GUBELMANN BROWN SWISS LTD.	ON
4	BSCANF11014246	GUBELMAN DALLY DILANA	PB	VG	87	2	10	11182	493	4.4	411	3.7	308	335	324	967	GUBELMANN BROWN SWISS LTD.	ON
5	BSCANF11050869	CLEARCREST JONES CHERYL	PB	VG	85	2	10	10438	494	4.7	375	3.6	295	343	302	940	HAROLD & MARSHA JELINSKI	ON
6	BSCANF11578061	MAPLE BOOM HARLEE	87			2	6	10350	454	4.4	367	3.5	304	327	308	939	RIMANN'S MAPLE BOOM FARM	ON
7	BSCANF11625268	GUBELMAN PROHUVO DIME	PB	EX	91	2	9	10494	452	4.3	412	3.9	292	312	327	931	GUBELMANN BROWN SWISS LTD.	ON
8	BSCANF11625277	GUBELMAN BROOKINGS DORA ET	PB	VG	88	2	9	10329	448	4.3	387	3.8	295	318	315	928	GUBELMANN BROWN SWISS LTD.	ON
9	BSCANF107363024	BROWN HEAVEN MANDEL SOUR DALLY	PB			2	10	10982	441	4.0	394	3.6	300	296	308	904	FERME BROWN HEAVEN	QC
10	BSCANF107108617	SCHWEIZER ALIBABA ERMA	87	GP	83	2	11	11403	452	4.0	393	3.5	300	295	295	890	LA FERME HANS ENR.	QC

Jr. 3 Yr Old

1	BSCANF11592757	NOR BELLA PAUL EVE	PB	EX	93	3	0	12202	625	5.1	449	3.7	335	425	354	1114	NOR BELLA ACRES INC.	ON
2	BSCANF11625278	GUBELMAN BROOKINGS DANIELA	PB	VG	87	3	0	12466	507	4.1	465	3.7	325	325	347	997	GUBELMANN BROWN SWISS LTD.	ON
3	BSCANF11604156	SWISSLANE SOLUTION ODESSA	93	GP	83	3	1	12943	489	3.8	428	3.3	344	322	324	990	SWISSLANE FARMS	ON
4	BSCANF11354396	SWISSLANE ALLOY BROOKI	PB	G	79	3	2	12595	468	3.7	409	3.2	340	312	315	967	SWISSLANE FARMS	ON
5	BSCANF11014237	GUBELMAN BROOKINGS CLAIRE	PB	EX	91	3	3	11829	482	4.1	413	3.5	320	323	318	961	GUBELMANN BROWN SWISS LTD.	ON
6	BSCANF11175967	SWISSLANE WONDERMENT JESSIE	93	GP	83	3	4	13035	506	3.9	432	3.3	329	314	311	954	SWISSLANE FARMS	ON
7	BSCANF107363016	BROWN HEAVEN SECRET COCO	PB	VG	88	3	2	11315	518	4.6	394	3.5	305	345	303	953	FERME BROWN HEAVEN	QC
8	BSCANF11014241	GUBELMAN VIGOR LILY	PB	GP	81	3	2	11877	453	3.8	410	3.5	324	308	320	952	GUBELMANN BROWN SWISS LTD.	ON
9	BSCANF10949040	KAMA DENZO MILLIE	PB	GP	80	3	5	12075	436	3.6	458	3.8	312	278	337	927	HAPPY COW DAIRY	AB
10	BSCANF107560572	SEROL JOEL BERNADETTE	PB	GP	82	3	3	11648	403	3.5	417	3.6	315	270	321	906	FERME SEROL SENC	QC

Sr. 3 Yr Old

1	BSCANF106277059	PAUFERLOU GLENN SOLARA ET	PB	GP	80	3	11	12053	653	5.4	443	3.7	291	393	306	990	PAUFERLOU INC	QC
2	BSCANF106157105	BROWN HEAVEN JET CHICK'S	PB	VG	86	3	11	11963	545	4.6	436	3.6	303	343	316	962	FERME BROWN HEAVEN	QC
3	BSCANF11014232	GUBELMAN TAU DAISY	PB	VG	85	3	9	12385	496	4.0	437	3.5	299	297	301	897	GUBELMANN BROWN SWISS LTD.	ON
4	BSCANF106711155	MILEC WAGOR LISETTE	PB	VG	86	3	11	11248	544	4.8	426	3.8	271	328	294	893	FERME MCF LECLERC INC.	QC

5	BSCANF11236817	SPRING ROSE EDDIE EVE	PB	VG	86	3	9	11495	485	4.2	393	3.4	283	299	277	859	STEPHEN HENHOEFFER	ON
6	BSCANF11437145	DUN ROVIN REGGIANO PRECIOUS	PB	EX	90	3	8	11389	446	3.9	398	3.5	288	279	288	855	DUN ROVIN ACRES LTD	ON
7	BSUSAF68136827	R HART ANGLIO TRIXIE	PB	VG	87	3	8	11099	429	3.9	378	3.4	289	277	282	848	FERME PLEIN SOLEIL (2010) INC	QC
8	BSCANF11014217	GUBELMAN JUHUS LAVENDER	PB	GP	81	3	7	10559	470	4.5	393	3.7	264	292	281	837	GUBELMANN BROWN SWISS LTD.	ON
9	BSCANF11397692	MAPLE BOOM HANNAH	87		3	7	10249	438	4.3	368	3.6	264	281	271	816	RIMANN'S MAPLE BOOM FARM	ON	
10	BSCANF11084578	MAPLE BOOM VADUZIA	75		3	8	10460	427	4.1	386	3.7	265	267	280	812	RIMANN'S MAPLE BOOM FARM	ON	
4 Yr Old																		
1	BSCANF9995255	BROWNSTAR VIGOR MAGGIE	PB	VG	87	4	10	15144	773	5.1	482	3.2	359	455	326	1140	MARCO PFISTER	ON
2	BSCANF106277049	PAUFERLOU AGENDA SCOTTIA	PB	VG	86	4	11	13326	690	5.2	494	3.7	316	408	334	1058	PAUFERLOU INC	QC
3	BSCANF11014185	GUBELMAN JUHUS DELILIA	PB	VG	87	4	8	14272	601	4.2	509	3.6	342	360	349	1051	GUBELMANN BROWN SWISS LTD.	ON
4	BSCANF11014162	GUBELMAN PAYDAY VERONA	PB	VG	87	4	5	13393	554	4.1	468	3.5	332	344	332	1008	GUBELMANN BROWN SWISS LTD.	ON
5	BSCANF11014169	GUBELMAN VIGOR CINDERELLA	PB	EX	90	4	7	14461	597	4.1	489	3.4	336	343	324	1003	GUBELMANN BROWN SWISS LTD.	ON
6	BSCANF11014227	GUBELMAN BROOKINGS JULIA	PB	GP	81	4	0	15045	537	3.6	458	3.0	361	320	314	995	GUBELMANN BROWN SWISS LTD.	ON
7	BSCANF11105044	SWISS DREAM CLEOPATRA ET ET	PB	VG	87	4	3	13080	527	4.0	461	3.5	324	325	327	976	LAURIE&DONNA HARP&APPLEGROVE	MB
8	BSCANF106157102	BROWN HEAVEN J BUTTERFLY	PB	EX	92	4	3	11845	605	5.1	400	3.4	294	373	284	951	FERME BROWN HEAVEN	QC
9	BSCANF106711148	MILEC DYNASTY PAULINE	PB	VG	87	4	3	13577	479	3.5	477	3.5	329	289	329	947	FERME MCF LECLERC INC.	QC
10	BSCANF10949009	KAMA TRACTION EMIMA	75	GP	84	4	10	13627	492	3.6	489	3.6	323	289	330	942	FREDERICK BOOM	AB
5 Yr Old																		
1	BSCANF9695511	GUBELMAN SPECIAL DANISH	PB	EX	95	5	9	16244	665	4.1	560	3.5	371	382	366	1119	GUBELMANN BROWN SWISS LTD.	ON
2	BSUSAF68114306	SILVER TOP DIABLO CHEDDAR	PB	VG	88	5	4	14245	673	4.7	501	3.5	314	376	315	1005	FERME BROWN HEAVEN	QC
3	BSCANF11014164	GUBELMAN GLENN LESLIE	PB	EX	90	5	8	14025	630	4.5	507	3.6	310	348	321	979	GUBELMANN BROWN SWISS LTD.	ON
4	BSCANF106157085	BROWN HEAVEN BUTTERSOTCH	PB	EX	90	5	3	13379	627	4.7	490	3.7	300	356	314	970	MOLYKA LEFEBVRE	QU
5	BSCANF9950505	EASTWIND WONDERMENT SIERRA	PB	VG	85	5	4	14087	522	3.7	454	3.2	337	313	311	961	HEIDI & WALTER VON AH	ON
6	BSCANF105756452	JOLIDAI PARKER BRIGELE ET	PB	VG	85	5	11	13301	558	4.2	465	3.5	314	332	314	960	JEANNOT & USE DESHARNAIS	QC
7	BSCANF105158046	PAUFERLOU TD WANDA	PB	GP	84	5	1	12888	585	4.5	445	3.5	290	332	287	909	MARC-ANTOINE ROUSSEAU	QC
8	BSCANF11006395	HOFSTRA TRISHA PRUNKI	PB	GP	82	5	1	11794	565	4.8	452	3.8	274	330	301	905	TAMMY MARTENS	AB
9	BSCANF105175662	BROWN HEAVEN DANIEL SEXY DALLY	PB	EX	92	5	11	12966	586	4.5	444	3.4	289	331	283	903	FERME BROWN HEAVEN	QC
10	BSCANF104587759	SHADY LANE SWISS SUP ALLRIGHT	PB	EX	92	5	5	12830	573	4.5	445	3.5	286	324	283	893	BARRIE A & DIANE DRUMMOND	QC
Mature Cow																		
1	BSCANF8988007	NOR BELLA SUPREME DABBLE	PB	EX	95	8	5	17633	680	3.9	596	3.4	388	376	375	1139	NOR BELLA ACRES INC.	ON
2	BSCANF9809630	DUN ROVIN MARAUDER BLUEBERRY	PB	F	68	6	7	15408	675	4.4	577	3.7	350	384	375	1109	DUN ROVIN ACRES LTD	ON
3	BSCANF9994063	ALDEE COLLECTION CHORAL ET	PB	EX	91	6	0	15032	707	4.7	575	3.8	334	391	364	1089	LAURIE & DONNA HARP	MB
4	BSCANF104477178	DAVRY SWISS ZEUS US LUCKY	PB	EX	93	7	6	14628	641	4.4	547	3.7	340	377	362	1079	FERME BROWN HEAVEN	QC
5	BSCANF105175654	CASTEL FASTBREAK CHIPITS	PB	EX	91	6	7	12801	701	5.5	475	3.7	299	412	317	1028	FERME BROWN HEAVEN	QC
6	BSCANF9649483	CLEARCREST WAGOR VICTORIA	75	GP	80	6	1	13317	643	4.8	465	3.5	304	365	304	973	HAROLD & MARSHA JELINSKI	ON
7	BSCANF9695513	GUBELMAN VIGOR ANGEL	PB	EX	90	6	1	13887	560	4.0	493	3.5	317	318	322	957	GUBELMANN BROWN SWISS LTD.	ON
8	BSCANF9695498	GUBELMAN DEREK LOLA	PB	VG	88	6	4	12972	548	4.2	489	3.8	305	324	328	957	GUBELMANN BROWN SWISS LTD.	ON
9	BSCANF7409991	GUBELMAN EVEN BETTER WHITNEY	PB	EX	91	9	9	13754	583	4.2	491	3.6	303	331	309	943	GUBELMANN BROWN SWISS LTD.	ON
10	BSCANF9779225	SWISSLANE ACE BROOKS	75	GP	80	6	1	13957	530	3.8	450	3.2	328	312	302	942	SWISSLANE FARMS	ON
Aged Cow																		
1	BSCANF8860482	EXCELSIOR CARTOON PONY	PB	VG	85	11	1	10064	426	4.2	347	3.5	236	257	231	724	JOHN G & LOUISE DEELSTRA	ON
2	BSCANF8626375	ELOC CARTOON KARA	PB	EX	90	11	5	10170	421	4.1	332	3.3	233	249	217	699	A. DEAN COLE	NS
3	BSCANF9481237	NOR BELLA BLAZER MEADOW	PB	EX	91	10	9	9124	362	4.0	306	3.4	218	223	210	651	NOR BELLA ACRES INC.	ON
4	BSCANF8832818	STEEDEL CARTOON CATI	PB	VG	88	11	9	8348	386	4.6	292	3.5	196	231	196	623	MICHAEL & CORDULA INAUEN	ON
5	BSCANF7260787	KEVIOTT ACRES DALTON NASVA	PB	VG	85	11	9	9215	338	3.7	299	3.2	208	198	193	590	KEVIN ELLIOTT	ON
6	BSCANF8745323	DERRY WAY HANNAH'S BREAUNA	PB	VG	85	10	8	8806	382	4.3	291	3.3	192	216	182	590	DAVID BUTLER	ON
7	BSCANF102621072	ANFIELD VINBREI TOPSY	PB	VG	85	11	1	9014	288	3.2	290	3.2	202	165	186	553	FERME CHAMCY INC.	QC
8	BSCANF103028952	FRAGANCES CARTOON IZA	87	EX	93	10	9	8609	255	3.0	303	3.5	199	150	201	550	FERME FRAGANCES INC.	QC
9	BSCANF8646311	CRISIDE TRUDAWN	PB	EX	93	15	3	6479	258	4.0	209	3.2	158	161	145	464	CRISIDE FARMS	MB

## DECEMBER 2016 BROWN SWISS EVALUATIONS



## ÉVALUATIONS SUISSE BRUNE - DÉCEMBRE 2016

## Taureaux Brown Swiss Bulls

Newly Proven Bulls by LPI		Top 5 LPI Bulls		Bulls with Biggest LPI Change		Sires of Top 25 LPI Bulls (Average LPI)	
Nouvellement Éprouvés selon IPV		5 Meilleurs selon l'IPV		Taureaux avec changement d'IPV important		Pères des 25 Meilleurs (Moyenne d'IPV)	
12 MOJO	ZEUS 1495	1 TWILIGHT + 2001		TWILIGHT +161 2001		ZEUS 12% 1499	
18 BOSEPHUS	WONDERMENT 1428	2 BROOKINGS - 1940		PAYSSLI -112 1869		WONDERMENT 12% 1420	
23 RAVEN	WONDERMENT 1364	3 PAYSSLI - 1869		MANCHESTER -101 1469		PAYOFF 8% 1905	
23 DELEGATE	VASIR 1364	4 ALIMONEY + 1809				VIGOR 8% 1606	
80 TANBARK	WONDERMENT 927	5 GLENN + 1646				PRESIDENT 8% 1564	
Milk / Lait (kg)		Fat / Gras (kg)		Protein / Protéine (kg)		Conformation	
1 ALTARANSOM	- 1283	1 WAGOR 0 38		1 BROOKINGS - 38		1 SUPREME 0 14	
2 JAMARR	- 872	1 CAFINO - 38		2 CAFINO 0 36		2 TWILIGHT 0 13	
3 CAFINO	- 826	1 LESTER + 38		3 WAGOR 0 35		2 GLENN 0 13	
4 WONDERMENT	+ 825	4 POET - 37		4 PAYSSLI - 34		4 WONDERMENT 0 12	
5 PAYSSLI	- 804	5 PAYSSLI - 34		5 POET - 31		4 THUNDER 0 12	

## Genotyped Brown Swiss Cows/Vaches Suisse Brune Génotypées

Top 5 GLPI Cows		Sires of Top 400 GLPI Cows		Dams of Top 400 GLPI Cows		New Top GLPI Cows	
5 Meilleures Vaches selon l'IPVG		Pères des 400 Meilleures selon l'IPVG		Mères des 400 Meilleures selon l'IPVG		Meilleures Nouvelles Vaches selon l'IPVG	
1 SHADY LANE SWISS BRKINGS ALPHA	+ 2119	BROOKINGS 7.00% 1584		MILEC ZEUS BEAUTY ET 8		4 GUBELMAN DRIVER BELLE 2019	
2 GUBELMAN JUHUS CRYSTAL	- 2084	WONDERMENT 5.00% 1103		PAUFERLOU WURL STORA 7		8 MILEC BROOKINGS ISABELLA 1918	
3 NOR BELLA PAUL EVE	+ 2067	VIGOR 4.50% 1242		ELM PARK COGNAC 'N' AMARETO 5		9 MILEC BROOKINGS BARBIE 1916	
4 GUBELMAN DRIVER BELLE	N 2019	GLENN 2.75% 1505		CASTEL PRESTIGE CLARA 5		10 SIGVIEW VASA BACARDI 1900	
5 GUBELMAN BROOKINGS CLAIRE	+ 2005	WURL 2.25% 1046		SHADY LANE SWISS DOM ALLERO ET 5		12 TOP SWISS VAN ELROSA 1847	
Milk / Lait (kg)		Fat / Gras (kg)		Protein / Protéine (kg)		Conformation	
1 SIMMABEC RANSOM BANNIÈRE	- 1522	1 NOR BELLA PAUL EVE + 72		1 KOOPYCREST HURAY BELLA P ET - 56		1 BROWN HEAVEN GLENN FANTASY 0 17	
2 KOOPYCREST HURAY BELLA P ET	- 1297	SIGVIEW VASA BACARDI N 69		2 GUBELMAN JUHUS CRYSTAL + 54		2 NOR BELLA PAUL EVE 0 16	
3 MILEC BROOKINGS ISABELLA	N 1258	3 GUBELMAN JUHUS CRYSTAL - 66		3 GUBELMAN JUHUS DAZZEL + 53		2 SHADY LANE SWISS SUP ALLRIGHT 0 16	
4 NOR BELLA PAUL EVE	+ 1238	SIGVIEW VASIR AMARETTO 0 57		4 GUBELMAN DRIVER BELLE N 50		2 BROWN HEAVEN J FANCY ET 0 16	
5 MILEC POWER BELLA ET	+ 1223	5 GUBELMAN VANPARI DOROTHY N 56		5 NOR BELLA PAUL EVE + 47		5 SHADY LANE SWISS T ALLOUETTE 0 15	
						5 MILEC WONDERMENT GINA - 15	
						5 PAUFERLOU GLENN SENIA ET 0 15	

**TOP 25 BROWN SWISS BULLS BY LPI**  
**25 MEILLEURS TAUREAUX DANS LA RACE SUISSE BRUNE SELON L'IPV**

**DECEMBER / DÉCEMBRE 2016**

RANK	LPI	TC	SEMEN CODE	REGISTRATION	GS	NAME	HERDS	DAUS	TDR	REL	MILK	%RK	FAT	%RK	PROT	%RK	CONF	%RC	SM	MS	F&L	DS	RP	HL	SCS	PERS	DF	MSP	MT	CA	DCA	BCS	
RANG	IPV	CT	CODE DE SEMENCE	ENREGISTREMENT	SG	NOM	TROUP	FILLES	RJT	FIAB	LAIT	%RC	GRAS	%RC	%PROT	%RC	%CONF	%RC	SM	P&M	P&M	PL	Cr	DLV	CCS	PERS	FF	VT	AV	AFV	CCC		
1	2001	I	0200BS00117	USA 68129646	G	COZY NOOK TWILIGHT TWIN	37	44	234	84	603	89	29	93	29	93	13	99	9	14	6	6	11	111	2.87	101	103	103	94	99	107	107	
2	1940	D	0054BS00438	USA 198772	G	R N R PAYOFF BROOKINGS ET *TM	59	159	1417	96	716	95	29	93	38	99	11	98	8	8	5	13	106	2.80	99	103	102	100	105	110	108		
3	1869	D	0504BS00051	DEU 813034326	G	PAYSLI ET	15	35	168	87	804	97	34	95	34	97	0.03	7	91	6	5	2	-1	106	2.75	100	106	103	95	94	107	102	
4	1809	I	0001BS00589	USA 68118669	G	R HART V A ALIMONEY ET *TM	6	12	138	76	480	81	24	85	26	93	0.08	7	91	4	6	3	1	109	2.54	108	105	103	100	102	103	102	
5	1646	D	0196BS13322	CHE 120023664460	G	SCHAMUN BS GORDON GLENN ET	20	32	565	95	292	69	28	93	28	93	0.20	13	99	8	5	10	12	102	3.16	84	104	99	93	103	103		
6	1611	I	0011BS00603	CAN 39421	G	BLESSING PROPHET RANSOM	27	56	1002	91	1283	99	27	93	28	93	-0.22	-3	28	-2	10	-4	-11	115	3.02	102	101	105	95	104	105	99	
7	1607	I	0196BS13193	CHE 120033040506	G	SCH-RZ BS PRESID ALIBABA *TM	42	101	1416	94	218	63	21	77	27	77	0.20	-2	37	-1	0	-6	-1	109	2.96	112	105	106	103	98	106	93	
8	1586	I	0196BS10295	CHE 110121201483	G	PETERS TOP ZOLDO ZEUS	41	77	1219	97	405	71	16	71	20	75	0.05	1	56	5	-3	-7	3	107	2.83	96	106	105	99	109	110	99	
9	1520	I	0054BS00374	USA 195618	G	SUN-MADE VIGOR ET *TM	98	322	4377	98	168	57	-1	39	10	59	0.04	7	91	8	6	0	-1	110	2.65	103	104	103	104	99	101	98	
10	1514	I	0014BS00288	USA 193827	G	TRIANGLE ACRES PO PAYOFF ET *TM	32	73	1144	96	668	95	13	63	30	95	0.05	2	64	3	6	-1	3	99	2.96	96	106	104	96	102	110	99	
10	1514	D	0200BS00002	USA 199360	G	OLSON MILLENIUM ET	39	71	897	90	490	81	14	67	19	75	0.01	3	70	8	2	-4	-2	106	2.88	102	101	106	94	105	107	90	
12	1495	D	0054BS00447	USA 199072	G	OLSONS MEL ZEUS MOJO ET *TM	6	17	133	80	187	57	19	77	9	55	0.02	4	77	8	1	-3	-4	106	2.75	99	100	110	96	108	105	97	
13	1489	I	0007BS00818	USA 199070	G	OLSONS MEL ZEUS MOTOWN ET *TM	12	36	517	87	177	57	25	89	8	53	0.02	5	85	5	0	0	0	106	2.81	97	103	104	100	105	104	95	
14	1469	I	0029BS03812	USA 68115207	G	COZY NOOK W MANCHESTER *TM	16	38	332	85	645	93	27	93	19	75	-0.06	6	87	7	5	6	-2	105	2.91	102	99	98	105	100	99	97	
15	1439	I	0014BS00320	USA 197305	G	KULP GEN PRONTO DALLY ET *TM	33	77	828	93	46	43	4	55	15	71	0.02	3	70	6	6	-2	0	101	3.01	100	104	114	90	91	98	99	
16	1434	D	0200BS00019	ITA 180295	G	PAEZZA DENMI EARN SCPIO ET	41	86	1371	95	66	43	25	89	16	73	0.15	2	64	4	-1	-2	2	107	2.90	102	95	107	105	104	101	106	
17	1433	D	0200BS00410	CAN 104235621	G	TRIANGLE ACRES POET ET	29	42	634	88	279	69	37	99	31	95	0.22	-3	28	1	-5	-1	-7	97	3.06	100	107	99	97	98	97	104	
18	1428	I	0007BS00852	USA 68129318	G	JOBOW WONDER BOSEPHUS ET *TM	10	18	82	75	452	81	23	81	17	73	0.00	9	95	9	8	9	0	103	2.67	106	92	102	103	98	99	99	
19	1412	I	0007BS00766	USA 194882	G	BLESSING BANKER AGENDA ET *TM	55	149	2123	96	-299	23	21	77	4	49	0.17	8	94	10	1	6	8	103	2.86	107	102	99	101	101	104	100	
20	1407	D	0007BS00766	DEU 938542953	G	PROHUVO	8	16	230	84	-210	25	23	81	7	53	-0.17	-3	28	-2	1	-5	3	107	3.09	98	105	111	101	96	99	108	
21	1402	D	0200BS00301	CAN 7855696	G	GUBELMAN VIGOR DASHIER ET	41	48	751	89	-28	35	1	47	23	87	0.26	4	77	5	1	-2	-1	106	2.78	101	102	92	103	101	102	112	
22	1391	I	0196BS11288	CHE 8881270	G	HANNY SWISS ACE WAGOR *TM	46	95	1373	95	582	89	38	99	35	97	0.16	2	64	6	-5	-3	6	94	3.03	100	95	99	102	108	106	101	
23	1364	I	0007BS00847	USA 68107570	G	NOLANDALE WONDERMENT RAVEN *TM	5	12	107	73	704	95	27	93	23	87	-0.04	5	85	4	11	5	-1	104	2.87	102	91	97	104	106	101	102	
23	1364	D	0200BS00119	CAN 11014273	G	GUBELMAN DELEGATE	21	28	142	78	287	69	13	63	23	87	0.13	0	50	0	1	-2	-1	105	2.71	90	101	94	100	81	102	110	
25	1355	D	0007BS00796	USA 197920	G	OLD MILL WIDE SUPREME ET *TM	29	77	1211	93	-127	27	-8	25	-5	27	0.00	14	99	10	13	11	11	106	2.99	99	103	107	96	84	108	100	



TOP BROWN SWISS YOUNG BULLS BY GENOMIC PARENT AVERAGE FOR LPI (GPA LPI) - DECEMBER 2016 GENETIC EVALUATIONS  
MEILLEURS JEUNES TAUREAUX SUISSE BRUNE SELON LA MOYENNE DES PARENTS GÉNOMIQUE POUR L'IPV (IPV MPG) - ÉVALUATIONS GÉNÉTIQUES DÉCEMBRE 2016  
(Based on young bulls at least 11 months old with semen available in Canada / Basé sur les jeunes taureaux âgés d'au moins 11 mois dont la semence est disponible au Canada)

RANK	GPALPI	REGISTRATION	NAME	AI. CONTROLLER	SEMIN CODE	AGE	MILK	FAT	PROT	%F	%P	SCS	CONF	MS	F&L	DS	RP	NAME of SIRE	NAME of DAM
RANG	IPV MPG	ENREGISTREMENT	NOM	CENTRE d'I.A.	CODE DE SEMENCE	ÂGE	LAIT	GRAS	PROT	%G	%P	CS	CONF	SM	P&M	PL	Cr	NOM du PÈRE	NOM de la MÈRE
1	2333	CHE 12011196217	GASIS BS HURAY TOPSPEED	200	0196BS30018	28	1691	79	72	0.08	0.12	2.87	1	-1	2	0	-2	HURAY	GASIS BS VASIR TANJA
2	2165	USA 68156270	SWITZER TALS CDCN DANE ET *TM	250	0054BS00543	35	1226	49	53	-0.04	0.08	2.83	9	5	9	7	6	SHLOH BROOKINGS CADENCE ET *TM	SWITZER TALS ALIBABA DAVOS
3	2122	CHE 120118143801	ACKERMANN'S BIVER PAPA MOLL B	200	0196BS53739	16	436	21	37	0.02	0.24	2.73	16	15	8	1	6	SCHERMA BLOOMING BIVER	ACKERMANN'S ANIBAL PAMELA
4	2107	USA 68156289	SWITZER TALS CDCN DIXON ET *TM	200	0007BS00877	36	1044	47	50	0.02	0.14	2.85	7	3	7	3	4	SHLOH BROOKINGS CADENCE ET *TM	SWITZER TALS ALIBABA DAVOS
5	2092	CHE 120094290070	SCHERMA BLOOMING BIVER	200	0196BS23838	50	856	38	46	0.11	0.25	2.98	17	14	9	4	4	SCHERMA GLENN BLOOMING ET	SCHERMA NESTA BEST
6	2085	DEU 815702962	ASSAY	9995	NULL	34	1007	46	49	0.03	0.13	2.85	10	10	7	2	3	SCHÄRZ BS VIGOR ANIBAL ET	QUALI
7	2060	CHE 120061028514	HOMERUN	200	0196BS24727	45	996	45	43	0.03	0.06	2.77	4	4	5	-2	-4	HURAY	HAWINA
8	2054	USA 68144448	LIME ROCK SEASIDE BLOOM	200	0200BS00303	52	1287	52	53	-0.04	0.04	2.85	7	5	5	3	5	R N R PAYOFF BROOKINGS ET *TM	LIME ROCK NARCISUS PETUNIA
9	2043	ITA 14890107974	KIBA FASHION ET	200	0200BS07529	34	615	37	47	0.12	0.28	2.84	4	7	3	0	-1	LAVAGE ZEUS VINO ZEPHIR	KIBA FRUGOLA ET
10	2035	CHE 120119702885	LENNOX B2F SMF SDF ARF WEF	200	0196BS53978	13	544	30	33	0.08	0.16	2.96	15	16	5	2	5	SCHERMA BLOOMING BIVER	ALPIGER'S TOP CALVINI LEILA
11	2018	USA 74300948	JO-LANE HURAY HI-TOWER ETV OCS	7	0007BS00886	21	1432	43	50	-0.22	-0.02	2.89	2	2	4	-1	-4	HURAY	CUTTING EDGE V HIPHI ET
12	2018	CHE 120067151698	FALCO	200	0196BS29962	23	502	33	34	0.14	0.19	2.81	14	12	9	5	6	FALK *TW*TD*TM*TA	VIGORA B2F
13	2008	USA 68170100	BMG LUST GET LUCKY ET *TM	250	0054BS00557	25	1663	58	57	-0.15	-0.03	3.07	8	3	4	8	-1	HURAY	HART'S LADY LUST ET
14	2008	CHE 120112742062	KIBA ANIBAL FACT-ET	200	0196BS28432	35	1075	24	41	-0.27	0.01	2.56	10	9	4	1	4	SCHÄRZ BS VIGOR ANIBAL ET	KIBA HURAY FRAGOLA ET
15	2004	USA 68150445	BLESSING BROOKINGS ADVISOR	7	0007BS00871	48	844	34	34	0.08	0.11	2.70	9	9	8	-1	3	R N R PAYOFF BROOKINGS ET *TM	BLESSING VIGOR ALESSA ET
16	2002	ITA 48990054091	MIR ABSOLUTE	200	0200BS07906	21	628	43	41	0.20	0.21	2.74	5	6	5	1	0	SCHÄRZ BS VIGOR ANIBAL ET	MIR HURAY GASSA ET
17	1990	840 3004509691	HOLYLAND TEMPO 91 ET *TM	250	0054BS00542	36	1281	56	46	0.02	-0.02	2.96	5	5	4	2	0	HURAY	COZY NOOK JOEL TIPS ET
18	1985	ITA 24990306669	CA MASCARI PAYSLLI	200	0196BS25411	56	1178	46	43	-0.06	-0.02	2.69	5	6	4	2	0	PAYSLLI ET	CA MASCARI AGIO LIETA ET
19	1969	CHE 120103791208	FALK *TW*TD*TM*TA	200	0196BS24289	49	835	36	40	0.00	0.12	2.79	8	7	4	3	5	NEUTOP PAYOFF ENSTEIN *TM	FABIOLA
20	1943	CAN 11869675	GUBELMAN DIPLOMAT	200	0200BS01001	30	559	42	38	0.22	0.20	2.79	6	4	5	2	6	LAVAGE ZEUS VINO ZEPHIR	GUBELMAN BROOKINGS DESIRE
21	1940	USA 68162626	WIL-RENE JACKSON TARZAN ET	513	0151BS01407	27	929	34	33	-0.09	-0.04	2.82	9	10	7	2	3	HILLTOP ACRES ALI JACKSON ET	WIL-RENE TEMTATION TEENA
22	1940	CHE 120115274058	DUSS BIVER VABIO B2F SMF SDF	200	0196BS30127	21	809	34	43	-0.02	0.16	3.02	11	11	4	5	3	SCHERMA BLOOMING BIVER	DUSS HURAY VENUS
23	1924	CHE 120118983896	KESSLERHOF ANIBAL PEEK B2F SM	200	0196BS53869	14	967	47	46	0.07	0.13	2.79	9	7	4	4	4	SCHÄRZ BS VIGOR ANIBAL ET	KESSLERHOF VASIR PARANIE ET
23	1924	CHE 120118496358	SCHWEGLER'S BS BI BARON-ET	200	0196BS29955	24	357	32	36	0.20	0.28	2.90	13	12	8	3	4	SCHERMA BLOOMING BIVER	BÄ/AR/KLITS BS ZASTER ZAMBA
25	1921	CHE 120110758232	LUFIZER B2F SMF SDF ARF WEF	200	0196BS53848	14	649	29	40	0.02	0.19	2.98	11	10	6	4	2	SCHERMA BLOOMING BIVER	HULDI

CANADIAN DAIRY NETWORK / RÉSEAU LAITIÈRE CANADIEN

TOP 10 BROWN SWISS HERDS BY LPI / 10 MEILLEURS TROUPEAUX SUISSE BRUNE SELON L'IPV

(minimum 20 active cows with official LPI) / (minimum de 20 vaches actives avec un IPV officiel)

December/Décembre 2016

Rank	LPI	No. Cows	%	Name of Farm / Owner	City	Province	Milk	Fat	Protein	Fat %	Prot %	SCS	CONF	MS	F&L	DS	RP
Rang	IPV	No. Vaches	G	Nom de la Ferme / Propriétaire	Ville		Lait	Gras	Protéine	% Gras	% Prot	CCS		SM	P&M	PL	Cr
1	1467	66	18	GUBELMANN BROWN SWISS LTD	WALTON	ON	356	19	22	0.04	0.08	2.90	2.7	2.9	1.8	-0.1	2.0
2	1294	46	20	SIGVIEW FARMS	MOOREFIELD	ON	221	18	14	0.10	0.06	2.91	-1.0	-0.5	-0.9	-1.7	1.0
3	1292	25	96	SHADY LANE SWISS	SHAWVILLE	QC	277	8	9	-0.04	-0.02	2.98	8.9	6.9	7.4	6.8	5.9
4	1267	52	46	FERME M.C.F. LECLERC INC.(BS)	TROIS-RIVIERES	QC	370	9	13	-0.06	-0.01	2.94	3.8	3.8	3.0	2.5	2.5
5	1245	47	0	SWISS LANE	LISTOWEL	ON	496	14	15	-0.07	-0.04	2.89	2.6	2.5	1.9	1.6	2.4
6	1240	24	75	PAUFERLOU INC.	POHENEGAMOOK	QC	114	12	9	0.08	0.05	3.02	5.0	4.3	3.7	3.5	3.6
7	1212	47	21	FERME HANS ENR.	ACTON-VALE	QC	396	13	13	-0.04	-0.03	2.96	2.0	1.7	2.0	1.9	1.0
8	1203	27	0	FERME DES BELLES PRAIRIES INC.	ST-JEAN-SUR-RICHELIEU	QC	221	11	12	0.02	0.04	2.91	1.1	1.3	1.0	0.4	2.9
9	1190	20	0	LOS LAND DAIRY	LISTOWEL	ON	391	9	12	-0.08	-0.03	3.03	1.6	0.7	2.7	1.9	3.2
10	1188	43	0	FOUR OAK FARMS	KLEEFELD	MB	58	5	5	0.03	0.03	2.86	4.9	3.9	3.1	3.1	4.8





**Provincial and National Averages Used as Benchmarks for Genetic Herd Inventory Reports**

**Moyennes provinciales et nationales à titre de point de repère pour les rapports d'Inventaire génétique du troupeau**

**Breed: Brown Swiss**

**- December 2016 / Décembre 2016 -**

**Race: Suisse Brune**

**All Active Cows / Toutes les Vaches Actives**

Province	No. Cows	% Inbreeding	Milk	Fat	Protein	% Fat	% Protein	SCS	CONF	Mammary System	Feet & Legs	Dairy Strength	Rump	LPI
	No. Vaches	% Consanguinité	Lait	Gras	Protéine	% Gras	% Protéine	CCS		Système mammaire	Pieds & membres	Puissance laitière	Croupe	IPV
NS / NÉ	21	7.77	65	6	5.1	0.03	0.03	2.99	2.9	2.2	2.6	2.7	2.7	1113
NB	18	8.61	24	5.8	6.9	0.06	0.06	2.87	1.8	2.2	1.8	-0.7	1	1213
QC	858	7.06	117	4.7	5.4	0.00	0.01	2.97	1.1	1.0	1.3	0.6	1.2	1064
ON	667	7.46	184	7.4	7.2	0.00	0.00	2.95	2	1.8	1.3	1.2	1.9	1122
MB	271	7.98	0	-0.9	-0.7	-0.01	-0.01	2.97	3	2.5	1.5	2.2	3.5	1000
SK	3	8.91	-1	-1.3	0.0	-0.02	0.00	2.95	3	3.0	2.0	1	1.3	1061
AB	32	4.86	431	7.5	12.9	-0.11	-0.03	2.89	-0.2	0.0	0.0	-0.7	3.1	1167
BC / CB	42	8.14	-4	-0.8	1.8	-0.01	0.02	2.99	3.1	2.7	2.5	1.8	2.2	1076
NF / TN	1	7.99	-95	-14	-5	-0.12	-0.02	3.2	-2	-5	3	1	-4	536
<b>CANADA</b>	<b>1913</b>	<b>7.34</b>	<b>125</b>	<b>4.8</b>	<b>5.2</b>	<b>0.00</b>	<b>0.00</b>	<b>2.96</b>	<b>1.8</b>	<b>1.6</b>	<b>1.3</b>	<b>1</b>	<b>1.8</b>	<b>1079</b>

**Active Cows With Publishable Production Indexes / Vaches Actives avec Indices de Production Publiables**

Province	No. Cows	% Inbreeding	Milk	Fat	Protein	% Fat	% Protein	SCS	CONF	Mammary System	Feet & Legs	Dairy Strength	Rump	LPI
	No. Vaches	% Consanguinité	Lait	Gras	Protéine	% Gras	% Protéine	CCS		Système mammaire	Pieds & membres	Puissance laitière	Croupe	IPV
NS / NÉ	18	8.32	46	5.3	4.4	0.03	0.03	2.98	3.2	2.5	2.9	2.7	3.1	1130
NB	18	8.61	24	5.8	6.9	0.06	0.06	2.87	1.8	2.2	1.8	-0.7	1	1213
QC	538	7.28	105	4.1	4.8	0.00	0.01	2.97	1.4	1.4	1.4	0.7	1.2	1062
ON	614	7.43	191	7.7	7.5	0.00	0	2.95	2	1.9	1.3	1.2	2	1127
MB	251	8.17	-6	-1	-0.8	-0.01	0.00	2.97	3.3	2.7	1.5	2.3	3.7	1003
SK	3	8.91	-1	-1.3	0.0	-0.02	0	2.95	3	3	2	1	1.3	1061
AB	29	4.95	455	7.9	13.3	-0.12	-0.04	2.89	-0.2	-0.1	0	-0.9	3.2	1183
BC / CB	38	7.97	1	0	3.2	0.00	0.03	2.99	3.1	2.9	2.6	1.7	2.3	1108
NF	1	7.99	-95	-14	-5	-0.12	-0.02	3.2	-2	-5	3	1	-4	536
<b>CANADA</b>	<b>1510</b>	<b>7.49</b>	<b>124</b>	<b>4.7</b>	<b>5.1</b>	<b>0.00</b>	<b>0</b>	<b>2.96</b>	<b>2</b>	<b>1.8</b>	<b>1.4</b>	<b>1.2</b>	<b>2.0</b>	<b>1084</b>

**Active Cows With Unpublishable Production Indexes / Vaches Actives avec Indices de Production Non-Publiables**

Province	No. Cows	% Inbreeding	Milk	Fat	Protein	% Fat	% Protein	SCS	CONF	Mammary System	Feet & Legs	Dairy Strength	Rump	LPI
	No. Vaches	% Consanguinité	Lait	Gras	Protéine	% Gras	% Protéine	CCS		Système mammaire	Pieds & membres	Puissance laitière	Croupe	IPV
NS / NÉ	3	4.47	180	10.3	9.0	0.03	0.02	3.08	1	0.7	0.3	3.0	0.7	1008
NB	0	----	----	----	----	----	----	----	----	----	----	----	----	----
QC	320	6.69	136	5.8	6.5	0	0.01	2.97	0.6	0.5	1.0	0.4	1.1	1067
ON	53	7.84	108	4.5	3.4	0	-0.01	2.98	1.7	1.6	1.5	1.0	1.2	1067
MB	20	5.61	74	1.1	1.0	-0.02	-0.02	2.96	-0.1	-0.2	1.3	0.3	1.2	969
SK	0	----	----	----	----	----	----	----	----	----	----	----	----	----
AB	3	4.01	198	3.7	9.3	-0.05	0.03	2.94	0.0	0.7	0.0	1.3	1.7	1011
BC / CB	4	9.74	-49	-8	-12.0	-0.07	-0.11	3.03	2.8	0.8	1.5	3.3	2.0	772
NF	0	----	----	----	----	----	----	----	----	----	----	----	----	----
<b>CANADA</b>	<b>403</b>	<b>6.78</b>	<b>128.1</b>	<b>5.3</b>	<b>5.7</b>	<b>0</b>	<b>0.01</b>	<b>2.97</b>	<b>0.7</b>	<b>0.6</b>	<b>1.1</b>	<b>0.5</b>	<b>1.1</b>	<b>1058</b>

Other interesting reports from CDN can be viewed at: [https://www.cdn.ca/files\\_ge\\_articles.php](https://www.cdn.ca/files_ge_articles.php)



TOP BROWN SWISS HEIFERS BY GENOMIC PARENT AVERAGE FOR LPI (GPA LPI)

MELLEURES GENESSES SUISSE BRUNE SELON LA MOYENNE DES PARENTS GÉNOMIQUES POUR L'IPV (IPV MP-G) (Based on heifers born in the past 30 months and have a Canadian owner / Basée sur les génisses nées au cours des 30 derniers mois et qui ont un propriétaire au Canada)

Table with columns: RANK, GPA LPI, REGISTRATION, NAME, BIRTH DATE, AGE, MILK, FAT, GRAS, PROTEINE, %FAT, %PROT, SCS, CONF, MS, SM, FAL, DS, RP, REGISTRATION, NAME, SEMEN CODE, LPI, DAM INFORMATION, NAME, LPI, IPV. Rows list various heifer breeds and their genomic parent averages.



# 2016 World Dairy Expo Brown Swiss Show and Sale



## International Brown Swiss Show Results:

**Grand Champion:** Brown Heaven Glenn Fantasy

**Exhibited by:** Ferme Brown Heaven, Vercheres, Qué

**Reserve Grand Champion:** Cutting Edge T Delilah

**Exhibited by:** Kyle Barton, Ancramdale, N.Y.

**Grand Champion of the Junior Show:** Cutting Edge T Delilah

**Exhibited by:** Kyle Barton, Ancramdale, N.Y.

**Reserve Grand Champion of the Junior Show:**

North Lanes Ag Paisley-ET

**Exhibited by:** Chelsea Skidmore, Union City, Ohio

**Premier Breeder:** Ken Main and Peter Vail, Copake N.Y.

**Premier Exhibitor:** Ken Main and Peter Vail, Copake N.Y.

**Premier Sire:** Old Mill WDE Supreme-ET

## World Premier Brown Swiss Sale:

Total Sales: \$120,200

Lots: 29

Sale Average: \$4,145

Highest Lot: \$8,000

## Supreme Dairy Show/National Show Results 2016 Résultats du Suprême laitier et de l'Exposition nationale Suisse Brune 2016

Thursday, November 3, 2016  
8:00 a.m., Judge Melanie Boulet



## Supreme Dairy Show/National Show Results 2016 Résultats du Suprême laitier et de l'Exposition nationale Suisse Brune 2016

### Summer Calf/Génisse Été

- 1 BROWN HEAVEN N FINAL TOUCH, Ferme Brown Heaven
- 2 BROWN HEAVEN GBOY BUBBLEGUM ET, Ferme Brown Heaven
- 3 RENCIE RICHARD SWISSTAR, Keven Dumas
- 4 BROWN HEAVEN NORWIN FLORENCE, Ferme Brown Heaven
- 5 BLYVIAN BIVER HAYDEN, Michael Lévesque

### Junior Calf/Génisse Junior

- 1 GLEN ISLAY BIVER FAIRYTALE, Lookout, Gerald Halbach
- 2 BROWN HEAVEN GLENN FROSTY, Ferme Brown Heaven
- 3 LOOKOUT NORTHERN LIGHTS, Lookout, Gerald Halbach, Sherri Hall
- 4 JOLIDAI BIVER HALISON, Ferme Chamcy
- 5 BROWN HEAVEN T FROOTLOOPS, Ferme Brown Heaven

### Intermediate Calf/Génisse Intermédiaire

- 1 BROWN HEAVEN BIVER SNODALLY ET, Ferme Brown Heaven
- 2 ISIDORE GENOX BOY JACINDA, Sem Lehmann

- 3 MILEC FANTASTIC BIDULE, Ferme M.C.F. Leclerc inc.
- 4 MILKSHAKE SEAMAN CLAUDETTE, Antonin Marcoux, Sonia Dumont, Ilona Ogay
- 5 RENCIE CADENCE WISDENCE, Keven Dumas
- 6 RENCIE ANIBAL JAYBAL, Keven Dumas

### Senior Calf/Génisse Senior

- 1 MILEC SEAMAN COPINE ET, Christine Dulac & Sylvain Boulanger

### Summer Yearling/1 an été

- 1 BROWN HEAVEN GLENN FANNY ET, Ferme Brown Heaven

### Junior Yearling/1 an junior

- 1 BROWN HEAVEN BLOOM BLUBERRY ET, Ferme Brown Heaven
- 2 VONLA SEAMAN BISCUIT, Ferme Chamcy

### Junior Breeder Banner/Bannière d'éleveur junior

- 1 BROWN HEAVEN
- 2 RENCIE
- 3 MILEC

### Junior Exhibitor Banner/Bannière d'exposant junior

- 1 Ferme Brown Heaven
- 2 KEVEN DUMAS
- 3 Ferme Chamcy

### Junior Breeders Herd/Troupeau d'éleveur junior

- 1 BROWN HEAVEN, Ferme Brown Heaven

2 RENCIE, Keven Dumas

### **Junior Champion/Championne Junior**

1 BROWN HEAVEN BIVER SNODALLY ET, Ferme Brown Heaven

### **Reserve Junior Champion/Championne Junior de réserve**

1 GLEN ISLAY BIVER FAIRYTALE, Lookout, Gerald Halbach

### **Honourable Mention Junior Champion/Mention Honorable Junior**

1 BROWN HEAVEN GLENN FANNY ET, Ferme Brown Heaven

### **Junior Sire/Meilleurs taureaux (junior)**

1 SCHERMA BLOOMING BIVER  
2 CUTTING EDGE SEAMAN \*TM  
3 SCHAMAUN BS GORDON GLENN ET

### **Milking Yearling/1 an senior en lait**

1 BROWN HEAVEN LEBRON FAITH ET, Ferme Brown Heaven  
2 MILEC GOLDMINE GIPSY, Ferme M.C.F. Leclerc inc.  
3 RENCIE FANTASTIC JAFAN, Keven Dumas

### **Junior 2 Yr Old/2 ans junior**

1 BROWN HEAVEN BONANZA FRISKY, Ferme Brown Heaven

### **Senior 2 Yr Old/2 ans senior**

1 BROWN HEAVEN J FANCY ET, Ferme Brown Heaven  
2 MILEC DALLY BELGAZOU ET, Ferme M.C.F. Leclerc inc.  
3 MILEC PAYSSLI MUSETTE, Ferme M.C.F. Leclerc inc.

### **Junior 3 Yr Old/3 ans junior**

1 BROWN HEAVEN JET SPEEDY DALLY, Ferme Brown Heaven  
2 ANFIELD THUNDER RAISIN, Ferme Brown Heaven, Markus Mueller

### **Intermediate Champion/Championne intermédiaire**

1 BROWN HEAVEN J FANCY ET, Ferme Brown Heaven

### **Reserve Intermediate Champion/Championne intermédiaire de réserve**

1 BROWN HEAVEN LEBRON FAITH ET, Ferme Brown Heaven

### **Honourable Mention Intermediate Champion/Mention Honorable intermédiaire**

1 BROWN HEAVEN JET SPEEDY DALLY, Ferme Brown Heaven

### **4 Yr Old/4 ans**

1 BROWN HEAVEN MANCHEST FRECKLE, Ferme Brown Heaven  
2 HINSY AMARETTO KOCKTAIL, Sylvain Hinse

### **5 Yr Old/5 ans**

1 BROWN HEAVEN TRACT SWEET DALLY, Ferme Brown Heaven

### **Mature Cow/Vache adulte**

1 BROWN HEAVEN GLENN FANTASY, Ferme Brown Heaven  
2 JONLEE EDDIE CAISTON ZIX, Ferme M.C.F. Leclerc inc. Progeny of Dam/Progéniture de mère  
1 SWISS DREAM AGENDA FAITH ET, Ferme Brown Heaven  
2 BROWN HEAVEN GLENN FANTASY, Ferme Brown Heaven  
3 BROWN HEAVEN TRACT SWEET DALLY, Ferme Brown Heaven  
4 RENCIE PAYUS JAYUS, Keven Dumas

### **Breeders Herd/Troupeau d'éleveur**

1 BROWN HEAVEN, Ferme Brown Heaven  
2 MILEC, Ferme M.C.F. Leclerc inc.

### **Premier Breeder Banner/Bannière d'éleveur**

1 BROWN HEAVEN  
2 MILEC  
3 RENCIE

### **Premier Exhibitor Banner/Bannière d'exposant**

1 Ferme Brown Heaven  
2 Ferme M.C.F. Leclerc inc.  
3 KEVEN DUMAS

### **Junior Provincial Champion/Championne provinciale Junior**

1 BROWN HEAVEN BIVER SNODALLY ET, Ferme Brown Heaven

### **Senior Provincial Champion/Championne provinciale Senior**

### **Grand Champion/Grande Championne**

1 BROWN HEAVEN GLENN FANTASY, Ferme Brown Heaven

### **Reserve Grand Champion/Grande Championne de réserve**

1 BROWN HEAVEN TRACT SWEET DALLY, Ferme Brown Heaven

### **Honourable Mention Grand Champion/Mention Honorable**

1 BROWN HEAVEN J FANCY ET, Ferme Brown Heaven

### **Sire/Meilleurs taureaux (de la journée)**

1 SCHAMAUN BS GORDON GLENN ET  
2 SCHERMA BLOOMING BIVER  
3 CUTTING EDGE SEAMAN \*TM

### **Supreme Champion/Championne suprême**

1 BROWN HEAVEN GLENN FANTASY, Ferme Brown Heaven



## Coloured Breed Highlights - December 2016 -

### Four Newcomers Penetrate Top LPI Lists for Brown Swiss Bulls and Cows

The highest young sire graduate last round, Cozy Nook Twilight Twin, gains 161 points to take over #1 LPI spot, just ahead of his sire, R N R Payoff Brookings ET, who remains at #2 LPI. After receiving his first official LPI last round, the former breed leader, Payssli ET, slips slightly into #3 LPI position but remains ahead of R Hart V A Alimony ET at #4 LPI. Schamaun BS Gordon Glenn ET (Gordon x Star) climbs the LPI ladder from #8 spot to complete the list of Top 5 LPI this round. In terms of sires with their first official LPI this round, four manage to enter the Top 25 LPI ranks. The highest of these, Olsons Mel Zeus Mojo ET, lands at #12 LPI and is a full brother to Millenium (#10 LPI) and Motown (#13 LPI). Jobo Wonder Bosephus ET (Wonderment x AltaPronto) is the highest young sire graduate arriving at #18 LPI. Both Nolandale Wonderment Raven (Wonderment x AltaRansom) and Gubelman Delegate (Vasir x Vigor) debut tied at #23 LPI. For cows, there are also four elite individuals making an outstanding debut, entering the Top 10 GLPI list as newly indexed cows this round. The highest of these is Gubelman Driver Belle (Driver x Vigor) at #4 GLPI (#7 Milk, #4 Protein). She arrives just behind the same trio of breed leaders from last round but now with Shady Lane Swiss Brkngs Alpha taking #1 GLPI, Gubelman Juhus Crystal at #2 GLPI and Nor Bella Paul Eve still in #3 GLPI position. Gubelman Brookings Claire stays solid and completes the Top 5 GLPI list remaining in #5 spot. Three other newly indexed cows penetrate the Top 10 GLPI list as Milec Brookings Isabella (Brookings x Power Surge, #3 Milk, tied #9 Protein), Milec Brookings Barbie (Brookings x Red Brae Prelude Zeus, #9 Milk) and Sigview Vasa Bacardi (Vasa x Prossli, #2 Fat, tied #6 Protein) debut at #8, #9 and #10 GLPI, respectively.

### Quebec Report

There was a nice participation by the Québec exhibitors in the Dairy Supreme final and to crown the event, Brown Heaven Glenn Fantasy was designated All-Breeds Supreme Champion. Our congratulations to Dave and Josée. On the other hand, we are disappointed that no breeders from other provinces participated. This will have to be discussed seriously in March.

We are in the process of preparing the national AGM that will be held in Lévis on March 16 and 17. As a new feature, we are launching a challenge to form teams that will participate in a quiz aimed at testing your knowledge of the breed! Go over your pedigrees, look at the pictures of renowned cows and pay close attention to the news! A nice rivalry will be established and create some ambiance at the beginning of the evening. We will have an excellent speaker who will talk about the latest news. Two farm visits to the Goulet and Dumas families will conclude the Friday activities.

We are looking forward to seeing you turn out in great numbers.

Submitted by; Chantal Leclerc  
President, Quebec Club

# ALBERTA BRAUNVIEH ASSOCIATION

## REPORT – November 2016



Greetings to everyone,

I am taking the “last minute” chance to submit a few quick news items from our province. How could time slip away sooo fast – we are truly wondering where it went this summer, but when you start reflecting on all that has happened and all that was accomplished, it explains itself!

Challenges were different than during last year’s drought. Even though May was extremely dry and making one think it will be a repeat of last year, things took a drastic turn with too much rain at the wrong times and the first big challenge was to “make hay while the sun shines”.

We are, however, aware of those that still had a battle with severely dry conditions, such as in the southern parts of our province. In talking with Andrew Eberl, he said that they had the driest year ever and that the one quarter section of hay yielded only 27 bales total. Despite the frustration of dealing with too much rain in our area, we still feel it is better than too much dust. At least the pastures were good and there is enough feed for wintering the cattle. Although for those with crops in our area it is another sad story, because lots of it is still out there, under snow that came too soon.

4-H did well with their carcass steers and their sale and we were there to support the kids. One of the buyer’s phoned us and said that they wanted another steer just like it: “it was the best they ever ate” (a real compliment, because that person is the absolute most critical when it comes to food).

In October, we got informed that Holstein Canada had received the necessary certificate to put the term “Original” into their system. Just on time for us to register the show animals with that designation. Of course, with any change there are always some wrinkles to be ironed out. If any of you find errors in the registration certificates, please contact Holstein Canada’s Registrar Annie Cote. Annie is extremely helpful and efficient in getting things done right. We are grateful for her continuous efforts and her patience to implement the new system.

In November, for Farmfair 2016, we had the best weather ever. There were 13 Braunvieh entries and the warm temperatures made the seven days spent at the Edmonton Northlands International Show much more pleasant than during the other years. We had great help from two new Braunvieh members that tried their hand at showing and boosted our hopes that we just may be able to hold our very own Braunvieh Show some day. Therefore, a big thank you to Paul Penner and Kelly & Gary Paxman. Everything you did was very much appreciated and we hope to see you again with your animals at Farmfair 2017. Also many thanks to Bruce and Lori Anderson, who came up all the way from Cowley and helped us out at Farmfair Exhibition.

Like before, the Braunvieh participated in the Multibreed Show. Unfortunately, this year, the show consisted of three breeds only – Galloway, Blonde d’Aquitaine and Braunvieh. The Salers breeders were unable to come. The one because of problems with the weather getting the crops in and the other breeder, a long-time participant, was diagnosed with cancer and is undergoing treatments. So let us all be thankful for health, no matter what the challenges of farming bring.

As always, all the Braunvieh at the Exhibition looked good and got a lot of attention. In addition to class placings, Swiss Tradition was awarded Junior Heifer Champion, got overall Reserve Grand Champion female with an 8-year old cow/calf team and earned the Premier Breeder and Exhibitor Awards.

Also noteworthy for the Braunvieh breed is that Calvin Raessler has several bulls at Alta Genetics for semen collection for export to China and Andrew Eberl exported six Braunvieh heifer calves to Mexico in November.

Our next Alberta Braunvieh Meeting is tentatively set for January 5, 2017 at Smittys in Olds at 11:00 a.m. Please keep the date open.

In closing, we like to extend our Best Wishes to everyone for a Wonderful Festive Season and a Healthy and Happy New Year.

Verena Peden  
Alberta Braunvieh Association Secretary-Manager

Hello Brown Swiss Breeders. Here in Ontario we are enjoying a long fall season, gently heading into winter. Looking back over the year, we are pleased to have hosted the C.B.S.B.A. A.G.M. last March and are looking forward to the meeting in Quebec in the spring.

We thank Anna DeBoer from Brussels for acting as our Brown Swiss Miss this year. Anna represented us at our shows at Hanover and Kincardine.

We held our Annual General Meeting this past Saturday, November 26. We started with a barn tour at Liberty Farm, the home of Klaas and Annie DeBoer and the children Anna and Sjoerd. The DeBoers moved from Holland 3 ½ years ago and are now milking a herd of 50 Holsteins, including six milking Brown Swiss. We thank the family for inviting us to their home. We held our business meeting and lunch at Veky's Restaurant in Listowel.

Ernst Gubelmann, Canadian Director, is pleased that their goal of registering with Holstein Canada has been achieved. At this time he is stepping down from his position on the Board. Ernst's dedication to the Brown Swiss breed have been invaluable to our Association and to the progress of our brown cow. We thank Ernst for his years of service. Ernst passed the torch on to Harold Jelinski. Thank you to Harold for stepping up and representing us on the Canadian Board.

Each year at our Annual Meeting we present production awards based on Dairy Herd Improvement records. This year's winners are: Highest B.C.A. on 10 – 25 completed records, Heiwa Farm with a B.C.A. of 276.0; Highest B.C.A. on over 25 completed records, Gubelman Brown Swiss Ltd., with a B.C.A. of 302.3. Most Improved on 10 – 25 records with +11.7 points, Per Swiss; and Most Improved on over 25 records, Dun Rovin Acres with a gain of 15.6 points. Congratulations to our breeders, who always work hard to improve the breed.

Going forward into 2017, this is our Board of Directors:

Chairman Dale Phillips [studlyfarmer@hotmail.com](mailto:studlyfarmer@hotmail.com)  
Vice Chairman Simon Signer [simonsigner@hotmail.com](mailto:simonsigner@hotmail.com)  
Shirley Dortmans [dortholmeholsteins@gmail.com](mailto:dortholmeholsteins@gmail.com)  
Troy McConnell [troybcc@hotmail.com](mailto:troybcc@hotmail.com)  
Stefan Gubelmann [gubelman@tcc.on.ca](mailto:gubelman@tcc.on.ca)  
Harold Jelinski [clearcrestfarms@gmail.com](mailto:clearcrestfarms@gmail.com)  
Secretary Tracy Reid [tracyreid22@hotmail.com](mailto:tracyreid22@hotmail.com)

We welcome Shirley as a new member to our Board. Thank you to Dan Bates who has served for several years and is still on the C.B.S.B.A. Board of Directors.

MERRY CHRISTMAS TO EVERYONE AND BEST WISHES FOR THE NEW YEAR!

Submitted by:  
Tracy Reid  
Ontario Brown Swiss Secretary

## Swissgenetics – December 2016

### Order Deadline – January 12, 2017

**Contact your local AI unit for further information.**

CIAQ 1-800-563-5603 • EastGen 1-800-267-9222, ext 339 (Nancy) • WestGen 1-800-563-5603



		GLP/PPVG	% Reliability/Fiabilité	Daughters/Filles	Milk/Lait (Kg)	Fat/Gras (Kg)	Protein/Protéine (Kg)	% Dev./Différ	% Dev./Différ	Daughters/Filles	Conformation
196BS23838	Scherma Blooming <b>BIVER</b>		52		656	38	46	0.11	0.25		17
	(Blooming x Nesta x Moiado)										
200BS00303	Lime Rock <b>SEASIDEBLOOM</b>		54		1287	52	53	-0.04	0.04		7
	(Brookings x Driver x Zoldo Zeus)										
196BS29962	<b>FALCO</b> BH1		47		502	33	34	0.14	0.19		14
	(Falk x Vigor x Prophet)										
196BS28432	Kiba Anibal <b>FACT</b> ET BH1		52		1075	24	41	-0.27	0.01		10
	(Anibal x Huray x Playboy)										
200BS07906	Mir <b>ABSOLUTE</b> BH1		50		628	43	41	0.20	0.21		5
	(Anibal x Huray x Playboy)										
196BS24289	<b>FALK</b> BH1		52		835	36	40	0.00	0.12		8
	(Einstein x Huray x Jolden)										
196BS29950	Joos Big Star <b>GRISCHA STAR</b>		45		817	29	36	-0.06	0.07		13
	(Big Star x Present x Nesta)										
196BS25458	<b>PASSAT</b>		50		738	35	35	0.03	0.08		14
	(Payssil x Glenn x Peter)										
196BS17348	Diethelm's Glenn <b>GUSTI</b> ET		75	112	923	53	49	0.17	0.19	102	9
	(Glenn x Zeus x Premium)										
196BS23570	Zumbühl's <b>BIG STAR</b>		51		340	20	33	0.07	0.25		14
	(Blooming x Nesta x Collection)										
196BS25485	Hilltip Acres Carter <b>KING</b> ET		56		652	29	28	0.01	0.05		12
	(Carter x Vigor x Premium)										
200BS07885	Kiba <b>NOLIMITS</b> ET BH1		58		326	11	11	-0.05	-0.01		12
	(Vigor x Agenda x Playboy)										
196BS26867	Buerklis BS Nirva <b>NATIONAL</b>		51		482	22	19	0.02	0.03		10
	(Nirvana x Jolden x Président)										
196BS25455	Müller BS Blooming <b>BARBADOS</b>		52		716	13	36	-0.21	0.12		13
	(Blooming x Ajax x Denver)										
CHEM120100540168	<b>New NELLO</b>		52		497	14	24	-0.06	0.07		8
	(Nelgor x Vigor x Gordon)										
196BS16716	Kalingen Nesta <b>NESCARDO</b>		72	91	460	9	13	-0.14	-0.06	76	12
	(Nesta x Picard x Poldi)										
196BS17855	Mani's Vigor <b>VILENO</b>		74	102	768	18	32	-0.15	0.07	89	5
	(Vigor x Eagle x Collection)										
196BS17191	Grob's Glenn <b>FLOH</b>		74	78	82	20	9	0.20	0.06	66	10
	(Glenn x Dominate x Milestone)										
196BS17089	Studer's BS Glen <b>GENOX-BOY</b> BH1		72	81	408	10	14	-0.09	0.00	70	13
	(Glenn x Eagle x Starbuck)										
196BS18360	<b>NORWIN</b>		73	119	755	15	25	-0.20	-0.02	95	10
	(Nesta x Precise x Ensign)										
196BS29962 - sexé	<b>FALCO</b> BH1		47		502	33	34	0.14	0.19		14
	(Falk x Vigor x Prophet)										
196BS28432 - sexé	Kiba Anibal <b>FACT</b> ET BH1		52		1075	24	41	-0.27	0.01		10
	(Anibal x Huray x Playboy)										
196BS24289 - sexé	<b>FALK</b> BH1		52		835	36	40	0.00	0.12		8
	(Einstein x Huray x Jolden)										
196BS29950 - sexé	Joos Big Star <b>GRISCHA STAR</b>		45		817	29	36	-0.06	0.07		13
	(Big Star x Present x Nesta)										
196BS25458 - sexé	<b>PASSAT</b>		50		738	35	35	0.03	0.08		14
	(Payssil x Glenn x Peter)										

## Swissgenetics Breeding Value Highlights December 2016



### BROWN SWISS

#### Change of Total Index Formula

With the December proof the Brown Swiss association has made some small changes on the total index formula. Now the important traits like daughter fertility, SCS and lactation persistency have more weight and will help us to find the right bulls to build a modern balance and functional brown Swiss breed.. Consequently we have had some small changes on the bull's ranking.

#### New releases bulls:



**SALOMON (Dally x Macky x Agio)** SALOMON has had a first proof last August with a small number of daughters. This time with 109 daughters on his proof, Salomon has confirmed his first proof, increasing his indexes for milk yield, for conformation and udder index too. His different pedigree combined with his new indexes makes him to a bull with a large potential of usage.

(Salomon RABEA)

His dam Macky MIRANDA has been one of the most successful show cows of the last ten years and at the same time she was one of the top production cow in her herd.

#### Proven bulls:

**Schärz BS Vigor ANIBAL-ET (Vigor x Mascot x Starbuck)** One of the worldwide leaders of the breed! This time ANIBAL has doubled the number of daughters in his proof, now with 439 daughters Anibal has a solid proof and maintains his incredible quality: he is the only one bull that can add production, fitness traits and show type profile to your herd without doubts. ANIBAL has other two good qualities: K-casein AB and b-casein A2A2!

**Scherma Glenn BLOOMING-ET (Glenn x Arsene x Premium)** The Total index formula changes but BLOOMING is not changing his incredible trend!! Now with more than 2000 daughters worldwide and first daughters on the third lactation Blooming has made another jump up for all production traits! At the same time he is the first bull for conformation in Germany and Switzerland. K-casein BB and b-casein A2A2.

**TENNDITH (Glenn x Ace x Playboy)** TENNDITH maintains his leadership for udder index and at the same time he has improved his production indexes adding milk yield, protein Kg and a better SCS index. TENNDITH is the right bull if you'd like to have cows with lots of substance, a wide chest, a strong front-end and a special udder! Two weeks ago a group of his daughters has been showed the Expo Swissgenetics and we can confirm that this group has been one of the best presented not only this year but during the last ten years!



(TENNDITH daughter group, Expo Swissgenetics)

**Studer's BS Glenn GENOX-BOY (Glenn x Eagle x Starbuck)** Another Glenn son with a solid profile, balanced and over the average of the sons of Glenn for all functionality traits! Indexes like SCS, longevity, milking speed, silky udders and milk Kg make GENOX-BOY another interesting choice to improve our herds without compromise.

**Diethelm Glenn GUSTI (Glenn x Zeus CH x Premium)** the third Glenn son with a different profile: GUSTI is our best Glenn son for all production traits. He is the right mating if you like to increase production, components, frame, strength and daughter fertility all in one!

**Mani's Vigor VILENO (Vigor x Eagle x Collection)** VILENO is out of one of the top Swiss cow families. His dam is the maternal sister of Wurl WACHTEL (European udder champion at the Show in Verona 2010). This proof has confirmed that VILENO is a top bull for all fitness traits, the best sire for semen fertility and one of the highest bulls for production (milk Kg and Protein % and Kg)

**NORWIN (Nesta x Precise x Ensign)** NORWIN has lost some milk kg but, at the same time, we have seen many calves which were born during the last three months and our impressions are very positive: dairy, strong and healthy calves are making happy breeders everywhere!

#### **New Optimis bulls (genomic bulls):**

**ALLURE (Big Star x Tango x Jolden)** ALLURE is available as Optimis bull with conventional and sexed semen at the same time! He is out of one of the most successful family in Switzerland: Ace ARVE. ALLURE is the only one bull that can show three cows on his maternal line as champion or reserve champion of Swiss Expo in Lausanne!

**PHIL (Norwin x Blooming x Vigor):** First available son of NORWIN with a special dam! His dam is Blooming PETUNIA, at the moment the best BLOOMING daughter for udder score and for protein % with a second lactation over 4.10%! The genomic profile makes PHIL the hottest bulls for the next months. K-casein BB and b-casein A2A2.

**DELICO (Volvo CH x Agenda x Playboy)** Sometime if we like to work with an outcross bull we need to accept compromises, this is not the case of DELICO: outcross bull with a high genomic profile in many important countries like Switzerland, Italy, USA and Germany. His dam is EX91 and has been National Champion in Italy at the Montichiari show 2013.

#### **Optimis (genomic bulls):**

**Scherma Blooming BIVER (Blooming x Nesta x Moiado)** BIVER is close to be at the end with his genomic period. His first daughters are now fresh in Switzerland and the first feedbacks are extremely positive! With the December run BIVER continues to lead all genomic lists for conformation, mammary system and continues to be the most used bull in many different countries like Italy, Switzerland and USA.

**BIG STAR, ALASKO, SIMBABOY** are other three top genomic bulls of the last three years that will have new information's as proven sires with the next April proof.

Here below a selection of our most used genomic bulls of the last months:

**FACT (Anibal x Huray x Playboy)** worldwide leader for SCS and high bull for Total Index.

**FALCO (Falk x Vigor x Prophet)** Top genomic bull without the bloodline of Blooming.

**PASSAT (Payssli x Glenn x Peter)** Different cow family and high type profile.

**TOPSPEED (Huray x Vasir x Politan)** Worldwide leader for all production indexes and for Total Merit Index.

**GRISCHA STAR (Big Star x Present x Nesta)** the winner of the December proof with the new formula of Total Index!



## ORIGINAL BRAUNVIEH

### Proven Bulls:

**JUWEL (William x Winzer x Waldo)**: the right high type profile bull to complete our OB line up! With the December proof JUWEL has improved his production profile, adding milk yield and maintaining the percentages of Fat and Protein. With his high numbers for rear udder attachment, for rump functionality and for the other conformation traits JUWEL will have a big impact on the OB breed. At the same time JUEWL can transmit good indexes for milking speed, SCS and beef too.



**ORELIO (Winzer x Voeris x Leo)** the easy leader of the Original Braunvieh breeds! ORELIO has a very balanced profile and excels with many important traits of these dual purpose breed. Now with 94 daughters ORELIO is the right answer for all the goals of the Original Braunvieh breed: s BB for the k-casein, longevity, conformation, production and at the same time incredible numbers for all beef traits! All in one package!

(ORELIO daughter group, JOBA Zug 2016)

### Optimis (genomics bulls):

**LORDAN (Rino x Lukas x Gral)** LORDAN has been the best seller of the last 12 months in Switzerland and continues to be very hot. LORDAN is the best genomic bull for the total merit index and has a nice profile for the dual purpose: average milk index and high indexes for fat, protein, SCS, longevity and daughter fertility!

**LORENTO (Rio x Voeris x Veri)** is the new genomic bull of our Original Braunvieh breed. LORENTO has a nice genomic profile without any defects. If you like to have a bull that can improve production, fitness and conformation at the same time, LORENTO is the right bull.

**Roos OB Venner VALERIUS (Venner x Dom x Kastor)** is our second genomic bull for the Original Braunvieh breed, with a nice genomic profile and a special cow family behind: the dam is EX-95, the grand-dam is EX-92 and the great grand-dam is EX-94!

## NGG Press Release



### WOW..WHAT A RUN! Genomic confirmation!

That is what **CADENCE** has done by soaring to #1 on the proven list. He was a former #1 Genomic Sire as well! He is amongst breed leaders for milk (+1144), protein (+44 & .02%), productive life (+5.2), type (+1.2) and udder composite (+.99\*\*)! He is also available in Preferred Sex. CARTER also had a big run by remaining the #1 proven bull for type at +1.4 and improving to +956 milk and +1.32 udder composite. He too is available in Preferred Sex.

**TONKA** (Driver X Joel) is another Genomic Gem to enter the Proven line-up with elite numbers, especially for fat (+60 Ranks #2), protein (+37) and Net Merit \$ (+475 Ranks #4). He is also an attractive outcross to most popular blood lines.

**DEWEY** (Brookings X TD) also confirmed his genomic prediction emerging at #3 Net Merit and an impressive combination of +954 milk +.07% Fat and +.03% Protein. He is from the same family as DESI who also improved to +848 milk.

We would also like to point out **BROOKINGS** is at his highest level ever, and in fact ranks #2 amongst 2nd crop bulls for Net Merit and #1 for Daughter Fertility at +2.9!

### GENOMIC GEMS INDEED!!

**DAREDEVIL** (Brady X Bosephus) has broken the type record by jumping to +1.6 ranking him at a comfortable #1, and is +1.65 udder composite. More impressive is that his type comes with a load of production at +1319 milk, +36 protein. Not to be overlooked is his elite Productive Life score of +5.0. GET LUCKY (Huray X Wonderment) has retained his reign of #1 for Milk, Fat and Protein!

**HAMPTON** (Dario X Cadence) is a new Gem that ranks near the top of the list at +579 NM# and stellar scores for Daughter Fertility (+3.0) and Productive Life (+7.6). Not to mention he is +1087 milk and +40 protein.

A new addition to the Champions Collection is **WATCHOUT** (Richard X Supreme). At +1.3 Type and +1.32 Udder Composite, he is the first Richard son and hails from the prolific Wizzbang family! This is only a sampling of the NGG line-up.

For full details, visit [www.BrownSwiss.com](http://www.BrownSwiss.com). Or give us a call, and we will talk cows!

# Hanover Show Results



The 8th annual Brown Swiss Show was held in conjunction with the Hanover Fall Fair on August 13, 2016. The day was hot and humid with on and off showers. The rain was very much appreciated by all for it had been very, very dry in Western Ontario, but they did get their heat units this year. Show ring was made to work inside for the afternoon.

The very capable John Buckley from Lindsey, Ontario was the official judge, placing 51 Brown Swiss individuals, plus the junior and group classes. Both ringsiders and exhibitors comments were best quality show ever, top to bottom. Several breeders were not able to attend or numbers could have been bigger.

There were 19 Junior exhibitors, 14 in the Junior division and 5 in the Senior division. A big thanks to them, hope they will come back next year. There were 12 open show exhibitors.

The Gary West of Shakespeare was ringside with microphone in hand, terrific job. Frank Robinson, professional photographer from California was taking pictures during and after the show.

Many thanks to Randy and Doreen of the Hanover Fair Board for their cooperation and most of all, big thanks to all the sponsors that helped with the Brown Swiss breeders at the show. Again thanks to all who helped make this show, till next year.

Bill, Fred, and Marion

## Class 1: Junior Heifers

- 1.) Glen Islay Biver Fairytale  
Chelsey Stephens
- 2.) Glen Islay Biver Faleapa  
Andrew and Amanda Den Haan
- 3.) Gubelman Biver Wylie  
Gubelmann Swiss
- 4.) Gubelman Biver Diana  
Gubelmann Swiss
- 5.) Keviott Acres Faust Darla  
Keviott Acres
- 6.) Matt W Payssli Rachel  
Sjoerd Jon De Boer
- 7.) Nor Bella Bosephus Electra  
Nor Bella
- 8.) Gubelman Kannon Dynasty  
Gubelmann Swiss
- 9.) Swisslane Cadence Bubbles  
Swisslane Farms
- 10.) Nor Bella Carter Silver  
Nor Bella

## Class 2: Intermediate Heifers

- 1.) Keviott Acres Temptation Caliop  
Keviott Acres
- 2.) RNR Kingsman Karlie  
J and S Dortmans and WM Yarosh
- 3.) Glen Islay Finelee  
Andrew and Amanda Den Haan
- 4.) Nor Bella Carter Plinko  
Nor Bella
- 5.) Gubelman Davenport Chloe  
Gubelmann Swiss
- 6.) Gubelmann Anibal Macey  
Gubelmann Swiss
- 7.) Keviott Acres Norius Daria  
Keviott Acres
- 8.) Gubelman Biver Wanda  
Gubelmann Swiss

## Class 3: Senior Heifers

- 1.) Keviott Acres Seaman Carrie  
Keviott Acres
- 2.) Royal Hill KP Sasha  
J and S Dortmans and Don L Craft

## Class 4: Summer Yearlings

- 1.) Dun Rovin Carter Cinder  
Dun Rovin Acres
- 2.) Terra Rose Bra Sequin  
J and S Dortmans
- 3.) Matt W Chellsie  
J and S Dortmans
- 4.) Keviott Acres Agenda Casidy  
Keviott Acres
- 5.) Liberty Deboer Durham Marissa  
Sjoerd Jon De Boer

## Class 5: Junior Yearlings

- 1.) Batesdale Seaman Robin  
Batesdale
- 2.) Yellow Briar Seraphina  
Jeff Stephens
- 3.) Nor Bella Seaman Sully  
Nor Bella
- 4.) Glen Islay Tanbark Finelass  
Andrew and Amanda Den Haan
- 5.) Nor Bella Jongleur Nadine  
Nor Bella
- 6.) Cutting Edge T Tiara  
Shawn Ver Voort

- 7.) Swisslane Dally Macey  
Katja Rechstainer

**Class 6: Winter Yearlings**

**Class 7: Senior Yearlings**

- 1.) Nor Bella Pepper Elsie  
Nor Bella  
2.) Dutcholm Jongleur Beauty  
Shawn Ver Voort  
3.) Keviott Acres Vigor Bonnie  
Keviott Acres

**Class 8 :**

**Junior Champion**

Nor Bella Pepper Elsie, Senior Yearling

**Reserve Junior Champion**

Glen Islay Biver Fairytale, Junior Heifer

**Class 9: Junior Best 3 Females**

- 1.) Nor Bella, Troy and Norval McCommell  
2.) Glen Islay, Andrew and Amanda Den Haan  
3.) Keviott Acres, Kevin Elliott  
4.) Gubelmann Swiss

**Class 10: Junior 2 Year Olds**

- 1.) Glen Islay Fantasy  
Andrew and Amanda Den Haan and Jeff Stephens  
2.) Dortholme PS Sunshine  
J and S Dortmans  
3.) Batesdale B Pinley  
Batesdale  
4.) Sun Made SD Super Kirby  
Shawn Ver Voort

**Class 11: Senior 2 Year Olds**

- 1.) Swisslane Atwood Lorna, 1st Best Udder  
Katja Rechstainer  
2.) Batesdale Jongleur Nik Nok  
Batesdale  
3.) Batesdale Thunder Vera  
Batesdale

**Class 12: 3 Year Olds**

- 1.) Nor Bella Jongleur Panazz, 1st Best Udder  
Nor Bella  
2.) Batesdale Vigor Strarburst  
Batesdale  
3.) Dunrovin Sundown Chrome  
Dunrovin  
4.) Milec Traction Belle  
Shawn Ver Voort

**Class 13: 4 Year Olds**

- 1.) Gubelman Brookings Katie, 1st Best Udder  
Gubelmann Swiss  
2.) Batesdale Vigor Noel  
Batesdale  
3.) Towpath Teaton Sky  
J and S Dortmans

**Class 14: 5 Year Olds**

- 1.) Nor Bella Supreme Sparks  
Nor Bella

**Class 15: Mature Cows**

- 1.) Gubelman Special Danish  
Gubelmann Swiss

**Class 16: Best Udder of Show**

- 1.) Gubelman Special Danish  
Gubelmann Swiss  
2.) Nor Bella Supreme Sparks  
Nor Bella

**Class 17:**

**Grand Champion**

Gubelman Special Danish, Mature Cow

**Reserve Grand Champion**

Nor Bella Supreme Sparks, 5 year Old

**Class 18: Best Bred and Owned**

- 1.) Gubelman Special Danish  
Gubelmann Swiss  
2.) Nor Bella Supreme Sparks  
Nor Bella

**Class 19: Produce of Dam**

- 1.) Maycco Finello  
Offspring - Glen Islay Fantasy, Glen Islay Tanbark  
Finelass  
Andrew and Amanda Den Haan

**Class 20: Dam and Daughter**

- 1.) Glen Islay Fantasy and Glen Islay Biver Fairytale  
Andrew and Amanda Den Haan

**Class 21: Senior Best 3 Females**

- 1.) Gubelmann Swiss  
2.) Nor Bella  
3.) Batesdale  
4.) Swisslane

**Class 22: Best Herd of 5 Females**

- 1.) Nor Bella  
2.) Gubelmann Swiss

**Class 23: Premier Breeder**

- 1.) Batesdale, Dan Bates  
2.) Nor Bella, Troy and Norval McConnell

**Class 24: Premier Exhibitor**

- 1.) Batesdale, Dan Bates  
2.) Nor Bella, Troy and Norval McConnell

**Junior Division**

**Champion** - Glen Islay Biver Fairytale, Chelsey Stephens

**Reserve Champion** - Keviott Tempation Caliop,  
Charlene Elliott

**Champion Showperson** - Charlene Elliott



## Grand and Reserve Cow



Frank Robinson

## Junior Best



Frank Robinson

## Junior Champion and Reserve



Frank Robinson

## Brown Heaven Glenn Fantasy



Frank Robinson

## Kincardine Brown Swiss Show 2016

Our Brown Swiss show was held at the Kincardine Fair on Saturday, September 3. The show was judged by Gary Markus from Ingersol. Our Brown Swiss Miss, Anna DeBoer, presented the prizes.

### SHOWMANSHIP

#### Novice Showperson

1. Courtney Gubelmann
2. Katrina Gubelmann
3. Leah Partridge
4. Simon Gubelmann

#### Junior Showperson

1. Julia Ferrier
2. Molly King
3. Sjoerd DeBoer
4. Graham Schweighorser

### Intermediate Showperson

1. Anna DeBoer
- Class 1 Female born March 1, 2016 – May 31, 2016
1. Gubelman Biver Wylie
  2. Gubelman Biver Diana
  3. Gubelman Kannon Dynasty
- Class 2 Female Intermediate Calf born Dec. 1, 2015 – Feb. 29, 2016
1. Norbella Carter Plinko
  2. Gubelman Biver Wanda
  3. Gubelman Anibal Macey
- Class 4 Female Summer Yearling Heifer born June 1, 2015 – Aug. 31, 2015
1. Dun Rovin Carter Cinder
  2. Gubelman Sun Tess
  3. Liberty DeBoer Durham Marissa



Class 5 Female Junior Yearling Heifer

1. Norbella Seaman Sully
2. Norbella Jongleur Sully

Class 7 Female Senior Yearling born Sept. 1, 2014 – Nov. 30, 2014

1. Norbella Pepper Elise

**Junior Champion:** Norbella Pepper Elise

**Reserve Junior Champion:** Dun Rovin Carter Cinder

**Honourable Mention:** Norbella Carter Plinko

Class 8 Junior Breeders Herd

1. Norbella Farms
2. Ernst and Stefan Gubelmann

Class 9 Junior Exhibitors Herd

1. Norbella Farms
2. Ernst and Stefan Gubelmann

Class 11 Female Senior 2 yr .old born Sept. 1, 2013 – Feb. 28, 2014

1. Dun Rovin Sundown Chrome

Class 12 Female 3 yr. old born Sept. 1 2012 – Aug. 31, 2013

1. Norbella Jongleur Pazzazz ET

Class 13 Female 4 yr. old born Sept. 1 2011 – Aug. 31 2012

1. Gubelman Dally Dollar

Class 14 Female 5 yr. old born Sept. 1 2010 – Aug. 31 2011

1. Norbella Supreme Sparks ET

Class 15 Mature Cow born before Sept. 1, 2010

1. Gubelman Special Danish

**Grand Champion:** Norbella Supreme Sparks

**Reserve Grand Champion:** Gubelman Special Danish

**Honourable Mention:** Gubelman Dally Dollar

Class 16 Best Udder

1. Norbella Supreme Sparks
2. Gubelman Special Danish
3. Gubelman Dally Dollar

Class 17 Breeders Herd

1. Norbella Farms
2. Ernst and Stefan Gubelmann

## Message From The Secretary-Manager's Desk



As already has been mentioned a few times within the newsletter, a huge congratulations and thank you to Ferme Brown Heaven for representing the breed with Brown Heaven Glenn Fantasy. Also a thank you to the other exhibitors who have shown their Brown Swiss and Braunvieh throughout the year at various events and locations to also promote the breed. The Quebec club once again did a great job of coordinating the national show at the Supreme Dairy Show in St. Hyacinthe, Quebec. It was unfortunate other provinces were unable to make the trip to Quebec for the show. Hopefully next year will see higher participation from other members as well.

The transition to Holstein Canada as Registrar has been moving relatively smoothly with any issues being dealt with as needed. Thank you to the Holstein Canada staff for all their efforts. Next year we will move from the old database at Holstein Canada to the new system allowing for access to further information and services. In the meantime, our only access to member information and registrations is on the CDN website. For member information, follow the link on the left side of the CDN site for Breed Association Tools and click on Member Query. At this location searching by name or by province is possible. Once the full transition is completed to the new system in 2017, a revision of the association website will be possible as well as other opportunities.

It was with sadness I heard of the passing of Audrey Grier. Audrey was a huge supporter of the Brown Swiss breed. Her telephone calls and written letters with pictures of her grandchildren showing Brown Swiss animals was always a pleasure to receive at the office. Her hospitality at the farm when Brown Swiss members visited was second to none. Audrey will be truly missed. Sincere condolences to her family and close friends at this difficult time.

Just a quick reminder to submit your entries for the All Canadian contest. Forms can be found on the association website or contact the office. Also of note, the amendments have all but one received ministerial approval.

Details for the AGM are listed within the newsletter. Please mark your calendar, book your hotel room and plan on attending to meet with fellow members, provide your feedback and enjoy a great day of farm visits viewing wonderful Brown Swiss animals.

At this time, I wish to say thank you to the Board of Directors and the members for their support and help throughout the year. From my family to yours, wishing you the gifts of the season – Peace, Joy and Hope. Merry Christmas and a Happy, Healthy, Prosperous New Year in 2017!

Season's Greetings,

Jessie